

P. J. Hannikainen.

Pyhäaamen laulu.

- LAULU
- SELLO
- PIANO (HAPPU)
- HARMONI

1

Handwritten musical score for the first system, featuring five staves:

- Laute:** Treble clef, containing a series of horizontal lines representing a sustained chord.
- Cello:** Bass clef, containing a series of horizontal lines representing a sustained chord.
- Viola:** Treble clef, containing a series of horizontal lines representing a sustained chord.
- Piano:** Bass clef, containing a series of horizontal lines representing a sustained chord.
- Korn:** Treble clef, containing a series of horizontal lines representing a sustained chord.

Handwritten annotations include *mp* (mezzo-piano) and *molto* in the Cello and Piano parts.

Handwritten musical score for the second system, featuring five staves:

- Laute:** Treble clef, containing a series of horizontal lines representing a sustained chord.
- Cello:** Bass clef, containing a series of horizontal lines representing a sustained chord.
- Viola:** Treble clef, containing a series of horizontal lines representing a sustained chord.
- Piano:** Bass clef, containing a series of horizontal lines representing a sustained chord.
- Korn:** Treble clef, containing a series of horizontal lines representing a sustained chord.

Handwritten annotations include *arco* and *mp* in the Cello and Piano parts.

Handwritten musical score for the first system. It consists of a vocal line (top staff) and a piano accompaniment (bottom two staves). The vocal line begins with a melodic phrase in a key with one flat (B-flat major or D minor). The piano accompaniment features a complex texture with many sixteenth and thirty-second notes, and some chords. Dynamics include *ff* and *mf*. There are some corrections and markings in the piano part, such as a wavy line and the word "vocal" written vertically.

Yab-bat-mor-gon stil-la Gys i Herrens
 Pyhä - - aamun rauhan Ilja huoksi

Handwritten musical score for the second system, including lyrics. The vocal line (top staff) has the lyrics: "Yab-bat-mor-gon stil-la Gys i Herrens" on the first line and "Pyhä - - aamun rauhan Ilja huoksi" on the second line. The piano accompaniment (bottom two staves) continues with similar notation to the first system. Dynamics include *mf* and *a tempo*. There are some corrections and markings in the piano part, such as a wavy line and the word "vocal" written vertically.

fied Jor- dens o- no tyst- ne Med dess strid och
 lee, Häly mainen riktig, Tårsta hälsö

This system contains the first two lines of the musical score. The top line is the vocal melody in treble clef, with lyrics written above and below the notes. The bottom two lines are the piano accompaniment, with the right hand in treble clef and the left hand in bass clef. The music is in a simple, homophonic style.

id! Hör! i när och fjär- ran Hel- ga klockers ljud
 see, Hörde julen- källor Harkla kunniga

mf

This system contains the second two lines of the musical score. It follows the same format as the first system, with a vocal line and piano accompaniment. The lyrics continue across the measures. A dynamic marking of *mf* (mezzo-forte) is present in the piano part.

Kal-la trötta hjär-tan, Ögu-da frid från Gud.

Tempeli-hin Herran Intra sieltä soi.

Handwritten musical score for voice and piano. The score includes a vocal line with lyrics in Swedish and a piano accompaniment. The lyrics are "Kal-la trötta hjär-tan, Ögu-da frid från Gud. Tempeli-hin Herran Intra sieltä soi." The piano part features chords and melodic lines in both hands. There are some handwritten annotations like "rit." and "rit." on the piano staves.

A series of ten empty musical staves, each consisting of five horizontal lines, arranged vertically on the page.

Sjun - gas Högt med tunga ny! Herre lät din
 hiitas Täyhti piirit maan! Uerra amman

The first system of the handwritten musical score consists of three staves. The top staff is the vocal line, with lyrics in Finnish: "Sjun - gas Högt med tunga ny! Herre lät din hiitas Täyhti piirit maan! Uerra amman". The middle and bottom staves are for piano accompaniment. The music is written in a common time signature. There are dynamic markings such as "mf" (mezzo-forte) in the piano parts. The handwriting is in black ink on aged paper.

se - bats Ljus snart byta fram Lät mig då få
 hollta Päivän valjeta! S yllissäs suo

The second system of the handwritten musical score also consists of three staves. The top staff is the vocal line, with lyrics in Finnish: "se - bats Ljus snart byta fram Lät mig då få hollta Päivän valjeta! S yllissäs suo". The middle and bottom staves are for piano accompaniment. The music continues in the same style as the first system, with dynamic markings like "mf". The handwriting is consistent with the first system.



vi - la kvi - gt i din famn!

molto *sempre* *stani - sa!*

rit

con sordino

pp

rit. p.

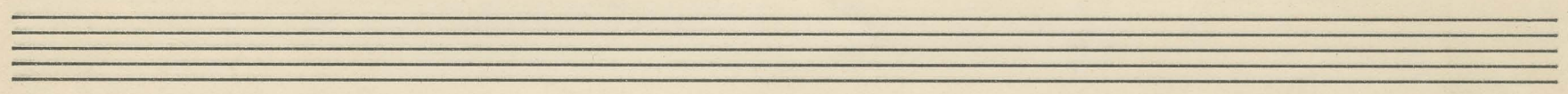
rit. p.

Handwritten musical score for the first system. It consists of a grand staff with a treble clef on the upper staff and a bass clef on the lower staff. The music includes several measures with notes, rests, and dynamic markings such as *p* and *rit.*. There are also some handwritten annotations and a large scribble over the middle section of the system.

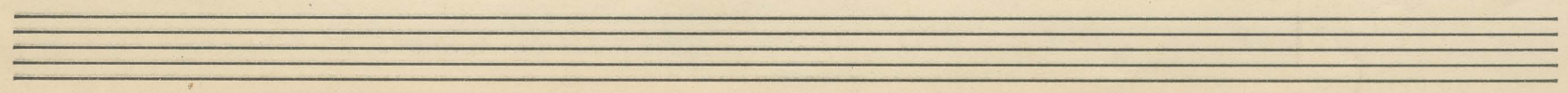
Handwritten musical score for the second system. It continues the grand staff notation from the first system. The music features notes, rests, and dynamic markings including *p*, *rit.*, and *ff*. There are also some handwritten annotations and a large scribble over the middle section of the system.



Handwritten musical score for the first system. It consists of a vocal line and a piano accompaniment. The vocal line features a melodic line with various notes and rests. The piano accompaniment includes chords and single notes, with dynamic markings such as *pp*, *p*, *f*, and *ff*. There are also articulation marks like slurs and accents.



Handwritten musical score for the second system. It includes a vocal line and a piano accompaniment. The vocal line starts with the marking *Flug.* (Allegretto). The piano accompaniment features chords and single notes, with dynamic markings like *pp*, *p*, and *f*. There are also slurs and other musical notations.



Cello

Pythácamun ramba.

Adagio

orsel

1 1 1 1

arco *pp*

mf

rit.

a tempo

mp

mf

con sordino $b\sharp$

Flag.

mp



A R. E. Westlund
B Heisinki-Helsingfors
O

Blank musical manuscript paper with 12 horizontal staves, each consisting of five lines.

P. J. Hannikainen

Pohjanmaa ranta.

Sabbatsmorgon stilla.

Piano. (Lupa)

Piano

(Anno)

Polichrome rumba

P. Amilcar

Adagio *dolce*

rit. *a tempo*

Hob *Eb* *F#* *Ab* *Cb*

rit. *mf* *f*

mf *f*

Handwritten musical notation on a grand staff. The right hand contains a melodic line with various notes and rests. The left hand contains a bass line with chords and single notes. Handwritten annotations include *dy#* in the first measure, *6b dy# 9# 10# 11# 12#* across the first few measures, and *mit.* and *a tempo* at the end of the system.

Handwritten musical notation on a grand staff. The right hand features a melodic line with a slur over several measures. The left hand has a bass line with chords. Handwritten annotations include *mit* at the beginning, *espressivo* in the second measure, and *8* in the fifth measure.

Handwritten musical notation on a grand staff. The right hand has a melodic line with a slur. The left hand has a bass line with chords. Handwritten annotations include *mp dy#* in the first measure, *dy# Ab* in the fifth measure, and *7* in the sixth measure.

Handwritten musical notation on a grand staff. The right hand has a melodic line with a slur. The left hand has a bass line with chords. Handwritten annotations include *dy#* in the fifth measure, *7 6b 9#* in the sixth measure, and *10b* at the end of the system.

Handwritten musical notation on a grand staff. The right hand has a melodic line with a slur. The left hand has a bass line with chords. Handwritten annotations include *mit.* at the beginning, *6b* in the first measure, *7b* in the second measure, *7b* in the third measure, and *Ab* in the fourth measure.

Handwritten musical notation on a grand staff. The right hand has a melodic line with a slur. The left hand has a bass line with chords. Handwritten annotations include *Ab* in the first measure, *7b* in the second measure, *7b* in the third measure, *dy#* in the fourth measure, *7b* in the fifth measure, *mp* in the sixth measure, and *Volte subito* at the end of the system.



A B
R. E. Westlund
Helsinki-Helsingfors

rallentando *ma a poco* *6b-6*

Handwritten musical notation for the first system, including notes, rests, and dynamic markings. The notation is written on a grand staff with treble and bass clefs. It features various note values, rests, and dynamic markings such as *pp* and *ppp*. There are also some handwritten annotations like *6b-6* and *8* with arrows pointing to specific notes.

Handwritten musical notation for the second system, including notes and rests. It continues the piece with similar notation to the first system, featuring notes and rests on both staves of the grand staff.

Handwritten musical notation for the third system, including notes and rests. The notation is sparse, with notes and rests on both staves of the grand staff.

Four empty musical staves for the fourth system, consisting of two grand staves (treble and bass clefs).

Four empty musical staves for the fifth system, consisting of two grand staves (treble and bass clefs).

Four empty musical staves for the sixth system, consisting of two grand staves (treble and bass clefs).

Four empty musical staves for the seventh system, consisting of two grand staves (treble and bass clefs).

Four empty musical staves for the eighth system, consisting of two grand staves (treble and bass clefs).

Four empty musical staves for the ninth system, consisting of two grand staves (treble and bass clefs).

Four empty musical staves for the tenth system, consisting of two grand staves (treble and bass clefs).

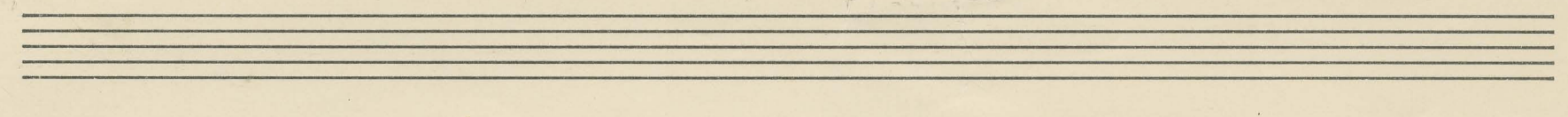
Four empty musical staves for the eleventh system, consisting of two grand staves (treble and bass clefs).

Four empty musical staves for the twelfth system, consisting of two grand staves (treble and bass clefs).

P. J. Hamikainen.

Pyhäaamen rauha.

Harmonia.

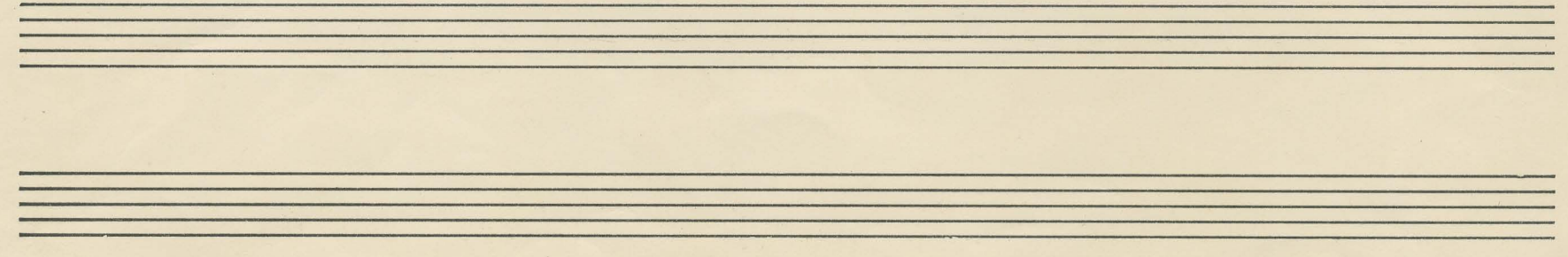


Handwritten musical score for the first system. It consists of three staves: a vocal line and a piano accompaniment. The tempo is marked "Adagio" and the time signature is 5/4. The piano part begins with a dynamic marking of *mp*. The music features a mix of whole and half notes with some grace notes.

Handwritten musical score for the second system, continuing the vocal and piano parts from the first system. The piano accompaniment includes a *rit.* (ritardando) marking towards the end of the system.

Satt'alsanorgon stilla Gyn i Herrens frid, Jordens oro tyttne Med den Skidaktid
 Pyhäin ammun rauhe Viljan hukkailee, Väly mainen viihtyy, Tainsto raukenee.

Handwritten musical score for the third system, continuing the piano accompaniment. It features a dynamic marking of *pp* and includes a blue ink correction or marking in the middle of the system.



Hä! I när och fjärran Helga klockas ljud kalla trötta hjärtan, Bjuda julafröjden
 Lunk, jubla - hellos! I råkka kunniga, Tempelihin Herran Juttu sieltä

Gucl! Ljiva sabbatmogon väiskaudu väl
 soi Sulo pyhä-aamu! Milloin hoitat-
 a tempo

Gry, Dä Gudlov skall pjuugas löqtmedtunga my! Herre lät din sabbatljusnat byta
 heran, jollain Herran kutos Täyhtä piirit anaan! Herre anna helika Päivän valje.

han, Lät mig dätä vila biigt i din paunu.
 ta! Syllissäs suo onulle Lepo ikuiset!
 rit. +46mb.
 IV



Handwritten musical score for the first system. It consists of three staves: a vocal line at the top, a right-hand piano line in the middle, and a left-hand piano line at the bottom. The vocal line contains several notes with lyrics written below them. The piano accompaniment features chords and melodic lines. The word "mit." is written above the vocal line, and "mit" is written below it. The lyrics "sinn ge" and "dinn" are visible in the piano part.

Handwritten musical score for the second system. It consists of three staves: a vocal line at the top, a right-hand piano line in the middle, and a left-hand piano line at the bottom. The vocal line contains several notes with lyrics written below them. The piano accompaniment features chords and melodic lines. The word "mit." is written above the vocal line, and "mit" is written below it. The lyrics "sinn ge" and "dinn" are visible in the piano part.

Five sets of empty musical staves, each consisting of a vocal line and two piano lines (right and left hand), arranged vertically down the page.