

Cello.

"String Sonatas"

Rossini

No 2.

*Allegro*

Handwritten musical score for Cello, Rossini's String Sonatas No. 2. The score is in bass clef with a key signature of two sharps (F# and C#) and a common time signature (C). It consists of ten staves of music. The first staff starts with a treble clef and a common time signature, then changes to bass clef. The music features various dynamics including piano (p), forte (f), and sforzando (sf). There are also performance markings like accents (^) and slurs. Measure numbers 10, 20, and 30 are circled. The piece ends with a double bar line and repeat signs.

V.S.# (Solo)



#2 v.c.

2 Solo. *mf dolce espress:* (40)

Tutti. (50)

(60)

*f* *p*

(70)

(80)

(90)



100

110

120

130

V.S# (Solo)



#2 v.c

\* *Solo.* (140)

*Tutti*

(150)

*Solo.* (160) *mf*

*Tutti* (170) *sf* *half sf* *p*

(180)

(190) *Solo.*



#2 v.c.



And  
Sonoro n

Andantino

Solo

espress:

Tutti

mf

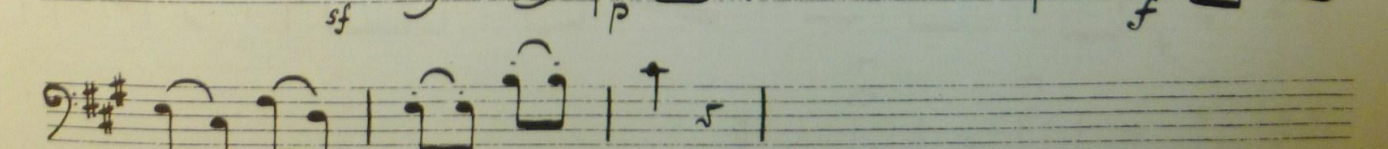
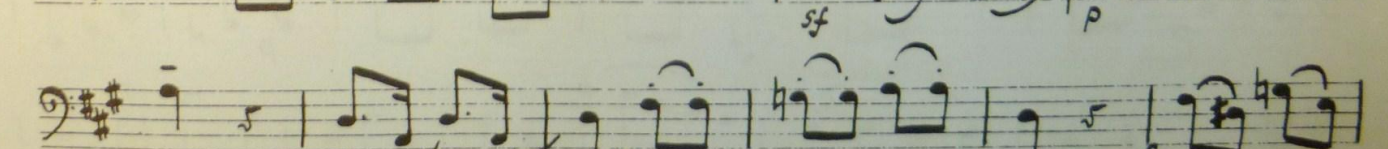
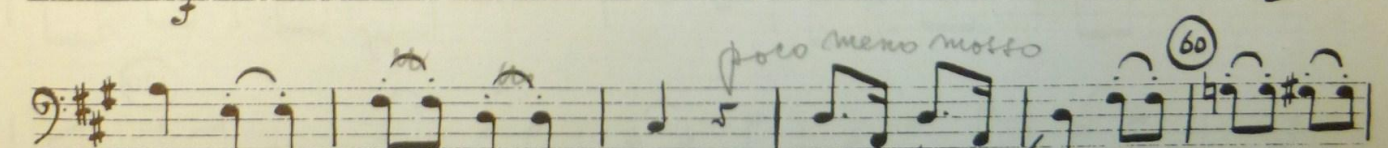
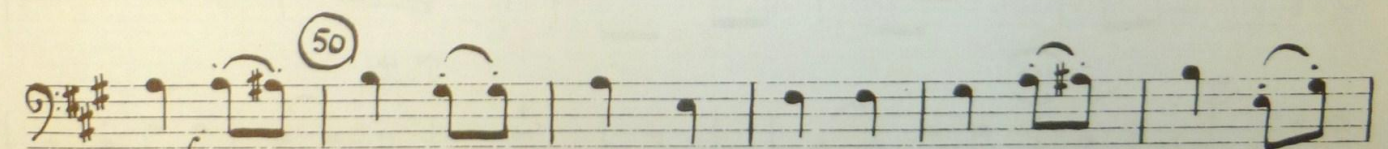
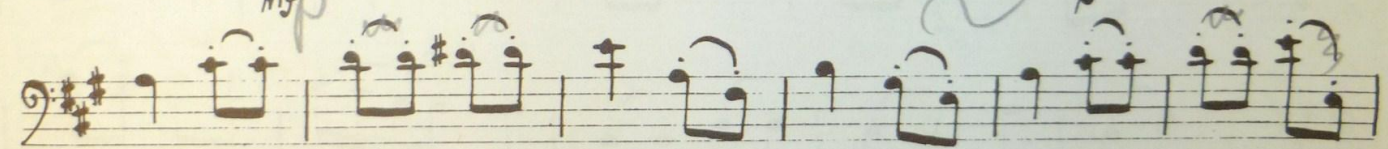
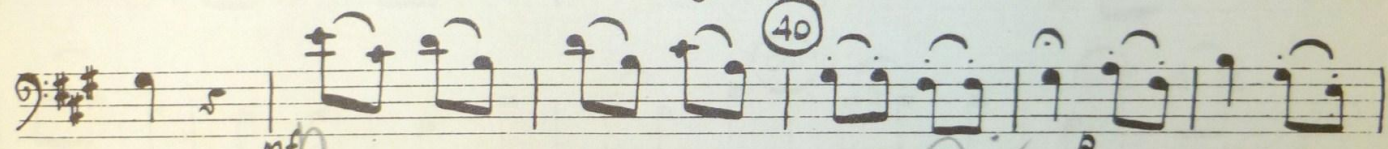
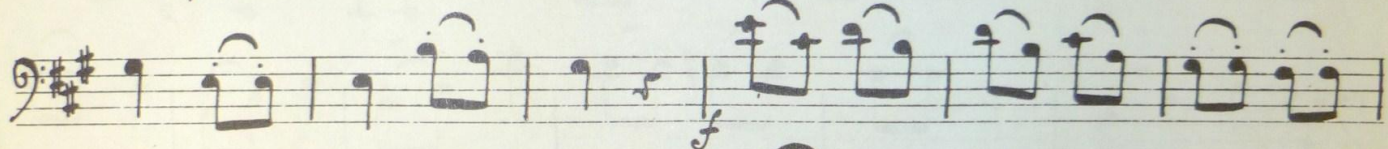
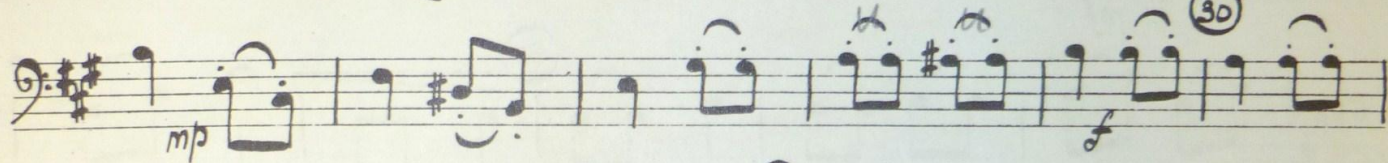
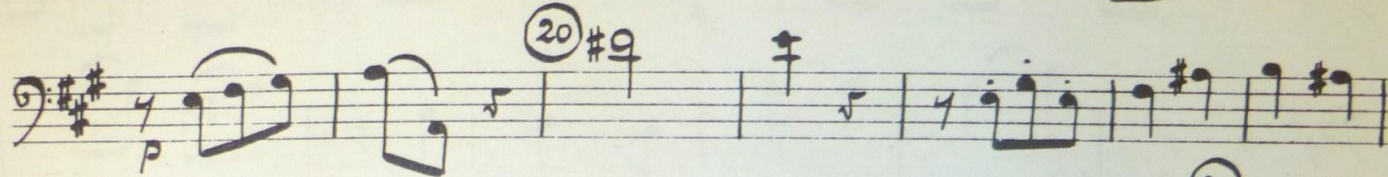
40 sim:

f

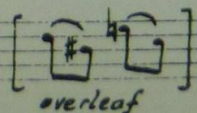
Allegro



#2 v.c.



V.3.#





#2 vc.

a tempo

8

70

*mf*

*rall.*

*p*

80

*f*

90

*p*

100

*f*

Solo

Tutti

*mf*

120