

Sinfonia

Violino Primo

Allegro

Handwritten musical score for Violino Primo, Sinfonia. The score is written on 14 staves. It begins with a treble clef, a key signature of one sharp (F#), and a common time signature (C). The tempo is marked 'Allegro'. The music features a complex rhythmic pattern with many sixteenth and thirty-second notes. Dynamic markings include 'piano' and 'forte' in various places. The score ends with a double bar line and repeat dots.

62309

Mus. 2731-N-26

75

Sächs. Landesbibl. 2



*Cantabile* *piano*

*Allegro*

The image shows a page of handwritten musical notation on aged paper. The top section is marked 'Cantabile' and 'piano', featuring a melodic line with various ornaments and a bass line with triplets. The bottom section is marked 'Allegro' and features a more rhythmic melody with triplets. The notation includes clefs, key signatures, and various musical symbols like slurs and ornaments. The page ends with several empty staves and a large scribble.



# Sinfonia

# Violino Primo

*Allegro*

*piano* *forte* *piano* *forte* *piano* *forte*

309

Mus. 2731-N-2b.

16

4





*Cantabile*

*piano*

*Allegro*



Sinfonia.

Violino Primo

Allegro

piano forte piano forte

piano forte

309  
Mus. 2731-N-26

17-6  
SLUB  
Dresden



*Cantabile*

*piano*

Handwritten musical notation for the Cantabile section, consisting of six staves of music. The notation is in a single system, featuring a treble clef and a common time signature (C). The music is characterized by a slow, flowing melody with frequent accidentals (sharps and flats) and a dynamic marking of *piano*. The notation includes various note values, rests, and phrasing slurs.

Handwritten musical notation for the transition between sections, consisting of one staff. The notation is in a single system, featuring a treble clef and a common time signature (C). The music is characterized by a slow, flowing melody with frequent accidentals (sharps and flats) and a dynamic marking of *piano*. The notation includes various note values, rests, and phrasing slurs.

*Allegro*

Handwritten musical notation for the Allegro section, consisting of four staves of music. The notation is in a single system, featuring a treble clef and a 3/8 time signature. The music is characterized by a fast, rhythmic melody with frequent accidentals (sharps and flats) and a dynamic marking of *piano*. The notation includes various note values, rests, and phrasing slurs.

Four empty musical staves at the bottom of the page, indicating the end of the handwritten notation on this page.



Sinfonia

Violino Secondo

Allegro

piano forte piano forte

piano forte

6x309

78

Mus. 2731-N-26

8

SLUB  
Dresden



*Cantabile*

*piano*

This section of the score is marked 'Cantabile' and 'piano'. It consists of ten staves of music. The notation is dense, featuring many slurs and ties. The first staff begins with a treble clef, a common time signature, and a key signature of one flat. The music is written in a style characteristic of the late 18th or early 19th century, with a focus on melodic and harmonic development.

*Allegro*

This section of the score is marked 'Allegro'. It consists of four staves of music. The notation is more rhythmic and includes several triplet markings. The first staff begins with a treble clef, a 3/4 time signature, and a key signature of one sharp. The music concludes with a double bar line and a decorative flourish.



# Sinfonia

# Violino Secondo

*Allegro*

*piano*

*forte*

*piano*

*forte*

*piano*

*forte*

8 x 309

Mus. 2731-N-26

AD SLUB Dresden



*Cantabile*

*piano*

*Allegro*

11



# Sinfonia

# Violino Secondo

*Allegro*  $\text{C}$

*piano* *forte* *piano* *forte* *piano* *forte* *piano*

2 x 309

Mus. 2731-N-26

20

42





*Cantabile*

*piano*

*Allegro*



Sinfonia.

Violetta.

Allegro

6 x 309

24

Mus. 2731-N-2b

14





Violino I  
Violino II

*Cantabile*  $\text{C}$   $\text{7}$  *piano*

*Allegro*  $\text{A}$   $\text{3}$   $\text{8}$



# Sinfonia

# Violetta

*Allegro*

The image shows a handwritten musical score for a piece titled 'Sinfonia Violetta'. The score is written on 15 staves. The first staff begins with the tempo marking 'Allegro' and a treble clef. The key signature is one sharp (F#), and the time signature is common time (C). The notation is dense, featuring many sixteenth and thirty-second notes, often beamed together. There are several slurs and accents throughout the piece. The paper is aged and shows some staining.

62309

Mus. 2731-N-26

22

Ab

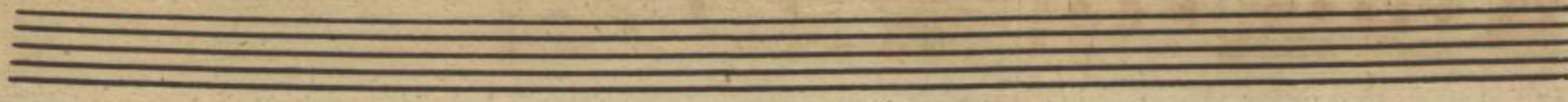
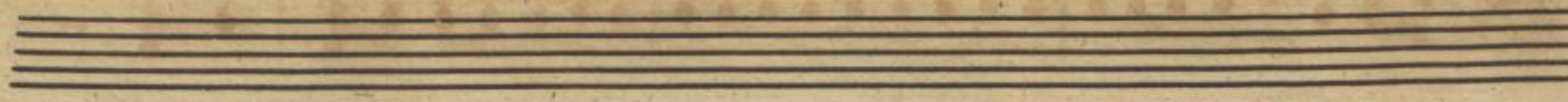
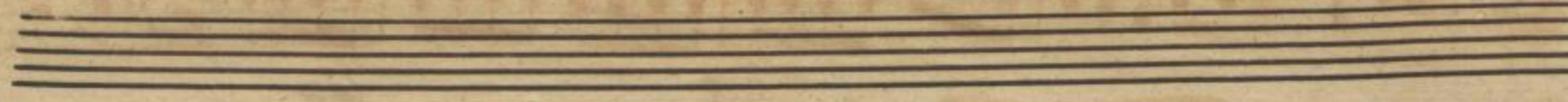
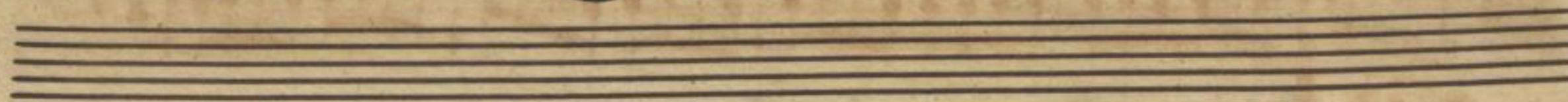




*Cantabile*  $\frac{3}{4}$   $C$  *piano*



*Allegro*  $\frac{3}{8}$   $D$



17



# Sinfonia Basso

*Allegro*

*forte* *piano* *forte* *piano* *forte*

309

Mus. 2731-N-2b

25

18





*Cantabile*  $\text{C}$   $\text{b}$  *piano*

The *Cantabile* section consists of 12 measures. It begins with a treble clef, a common time signature (C), and a key signature of one flat (B-flat). The tempo and dynamics are marked *Cantabile* and *piano*. The notation features a mix of eighth and sixteenth notes, often beamed together. A repeat sign with first and second endings is present in measure 4. The section concludes with a double bar line and a fermata over a whole note chord.

*Allegro*  $\text{G}$   $\text{b}$

The *Allegro* section consists of 4 measures. It begins with a treble clef, a 3/8 time signature, and a key signature of one flat (B-flat). The tempo is marked *Allegro*. The notation is more rhythmic, featuring eighth and sixteenth notes. A repeat sign with first and second endings is present in measure 2. The section concludes with a double bar line and a fermata over a whole note chord, followed by a scribbled-out section.



Sinfonia

Basso.

Allegro

6 x 309

26

Mus. 2731-N-26

20





*Cantabile*  $\text{C}^7$  *piano*

*Allegro*  $\text{C}^{\#}$   $\frac{3}{8}$



Sinfonia

Basfo.

Allegro 



 *ma. forte*

 *piano*

 *forte*







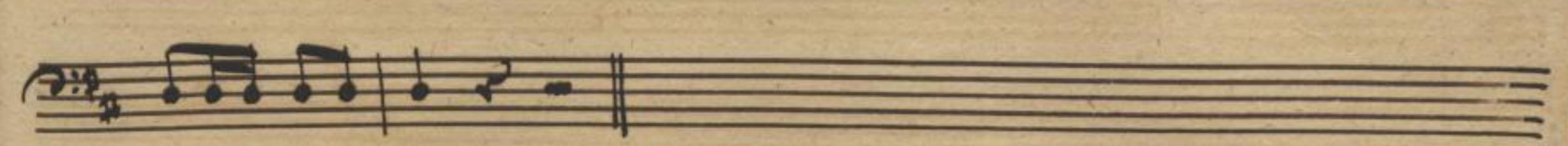


 *piano* *forte*









*309*

Mus. 2731-N-26

27

22 SLUB Dresden



*Cantabile*

Handwritten musical score for the first section, labeled "Cantabile". It consists of ten staves of music in bass clef with a common time signature (C). The notation includes various note values, rests, and dynamic markings such as "piano" and "b". The music concludes with a double bar line and a repeat sign.

*Allegro*

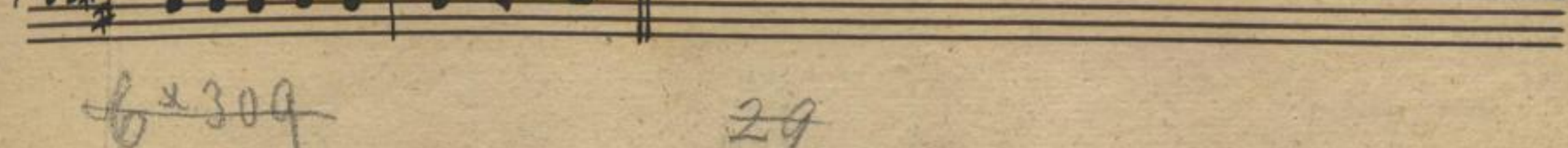
Handwritten musical score for the second section, labeled "Allegro". It consists of five staves of music in bass clef with a 3/8 time signature. The notation includes various note values, rests, and dynamic markings. The section ends with a double bar line, a repeat sign, and a large scribbled-out area.

Four empty musical staves, each consisting of five horizontal lines, located at the bottom of the page.



# Sinfonia

# Cembalo



6 x 309

29

Mus. 2731-N-26

24





*Cantabile*  $\text{C}$  *piano*

*Allegro*  $\text{G}$

*Allegro*  $\text{G}$



# Sinfonia

# Basfono

*Allegro*

*piano* *forte*

*piano* *forte*

*pia.* *forte*

6309

Mus. 2731-N-2b

24

30





*Cantabile*  $\text{C}$   $\text{7}$

*Allegro*  $\text{G}$   $\text{3/8}$



Sinfonia.

Basfono

Allegro

*forte*

*piano*

*forte*

*piano*

*piano*

*forte*

6309

Mus. 2731-N-26

23

32





*Cantabile*

*piano*

*Allegro*

*sub*



# Oboe Primo

*Allegro*

*Cantabile f*

V.V.V.

6309

30

Mus. 2731-N-26

26





*Allegro.*

Handwritten musical notation on four staves. The first staff begins with a treble clef, a key signature of two sharps (F# and C#), and a 3/8 time signature. The notation consists of a series of eighth and sixteenth notes, some with slurs and accents. The second and third staves continue the melodic line with similar rhythmic patterns. The fourth staff shows a change in texture, featuring a bass clef and a series of chords and a wavy line, possibly representing a bass line or a specific instrument's part.



# Oboe Secondo.

*Allegro*

*Cantabile* *Tace* // *Volti*

6.309  
Mus. 2731-N-26

74 - 28





*Allegro*

Handwritten musical score for the first system. It consists of two staves: a treble clef staff on top and a bass clef staff on the bottom. The key signature is two sharps (F# and C#), and the time signature is 3/8. The notation includes various note values, rests, and dynamic markings such as 'p' and 'f'. The first staff begins with a treble clef, a key signature of two sharps, and a 3/8 time signature. The second staff begins with a bass clef, a key signature of two sharps, and a 3/8 time signature. The notation is dense and includes many slurs and accents.

A series of ten empty musical staves, each consisting of five horizontal lines, arranged vertically on the page. These staves are blank and do not contain any musical notation.

29



Sinfonia

Corno Primo.

*Allegro*  $\text{C}$

*Cantabile* *Tacet*

*Allegro*  $\frac{3}{8}$

*bx 309*  
Mus. 2731-N-26

12 34 SLUB Dresden



*[Faint, illegible handwriting on aged paper]*

12  
12



Sinfonia

Corno Secondo.

*Allegro*  $\text{C}$

*Cantabile, tacet* //

*Allegro*  $\frac{3}{8}$

64 309  
Mus. 2731-N-2b

73

35





*[Faint, illegible handwriting on aged paper]*



Sinfonia

Tromba Primo.

*Allegro* 



*1.* 







*2.* 

*1.* 





*Cantabile fave.*

*Allegro* 

*2.* 

6309

Mus. 2731-N-26

28

36 SLUB Dresden



*[Faint, illegible handwritten text, likely bleed-through from the reverse side of the page.]*

171  
172



*Sinfonia*

*Tromba Seconda*

*Allegro*  $\text{C}$

*Cantabile Tace*

*Allegro*  $\text{C}$

*fine*

*lx 309*  
Mus. 2731-N-2b

# 37 SLUB Dresden



*[Faint, illegible handwriting on aged paper]*

3851  
1612