

a M<sup>re</sup> Clara Wieck

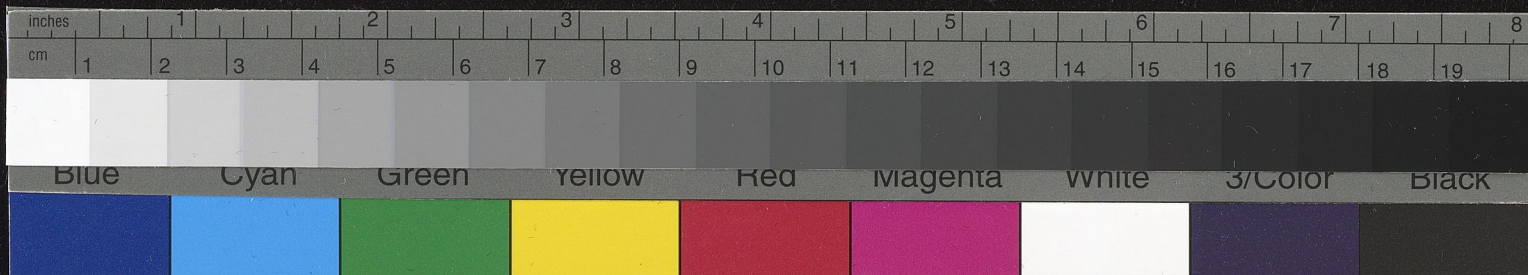
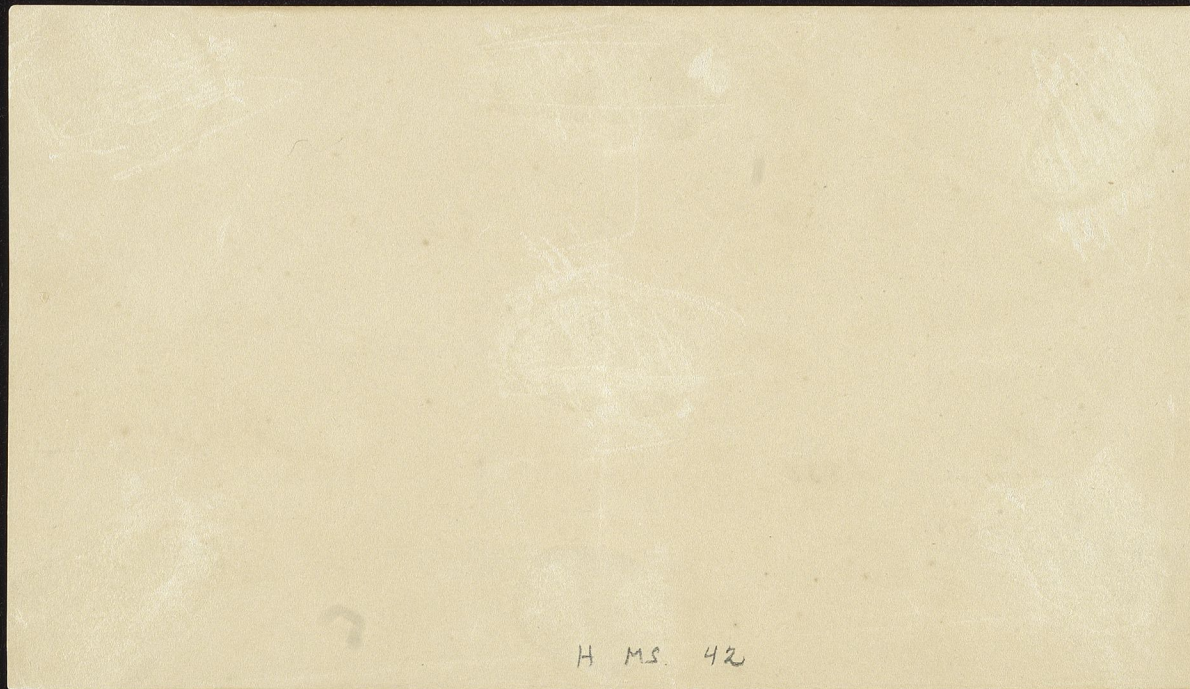
par son administration

Leipzig 1836

D. 12 Septbr.

*Chopin*



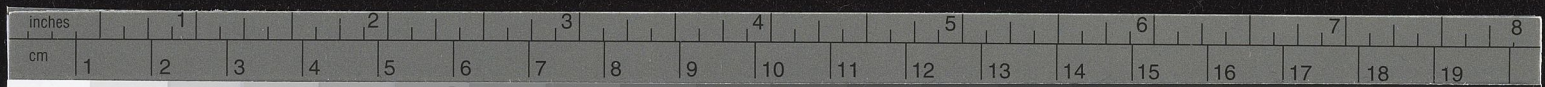


100

Polonaise, pour le piano, dédiée à Monsieur Auguste Leo, par F. Chopin.  
Leipzig Breitkopf et Haendel. Paris Schlesinger. Londres Wood et Aghton. Op. 53. 1

*Maestoso*

The image displays a handwritten musical score for a Polonaise in B-flat major, Op. 53, No. 1 by Frédéric Chopin. The score is written on five systems of staves, each consisting of a treble and bass clef. The notation includes various musical symbols such as notes, rests, and ornaments. The paper is aged and shows signs of wear, including some staining and discoloration. The tempo marking 'Maestoso' is written at the beginning of the first system. The score is numbered '100' in the top left corner and '1' in the top right corner. The title and publication information are written in the top right corner.



Handwritten musical score, first system. It consists of two staves, likely piano and bass. The notation includes complex chords and melodic lines. A dynamic marking of *ff* (fortissimo) is present at the beginning. The piece concludes with a fermata over a final chord.

Handwritten musical score, second system. It continues the two-staff notation. A *low* marking is written above the upper staff. There are some dark ink scribbles in the middle of the system, possibly indicating a correction or deletion.

Handwritten musical score, third system. Similar to the previous systems, it features two staves with complex musical notation. A *low* marking is visible above the upper staff.

Handwritten musical score, fourth system. The notation continues across two staves. A *low* marking is present above the upper staff. The system ends with a fermata.

Handwritten musical score, fifth system. The notation is spread across two staves. A *sostenuto* marking is written above the upper staff. The system concludes with a fermata.



Handwritten musical score, first system. Treble and bass staves. Includes dynamic markings *ff* and *pp*, and a fermata. A circled number '3' is visible on the right side.

Handwritten musical score, second system. Treble and bass staves. Includes dynamic markings *pp* and *ff*. A circled number '4' is visible on the right side.

Handwritten musical score, third system. Treble and bass staves. Includes dynamic markings *pp* and *ff*. A circled number '5' is visible on the right side.

Handwritten musical score, fourth system. Treble and bass staves. Includes dynamic markings *pp* and *ff*. A circled number '8' is visible on the left side. The word *loco* is written above the staff. The word *stacc* is written below the staff.

Handwritten musical score, fifth system. Treble and bass staves. Includes dynamic markings *pp* and *ppoco*. A circled number '3' is visible on the left side. A circled number '7' is visible on the right side.



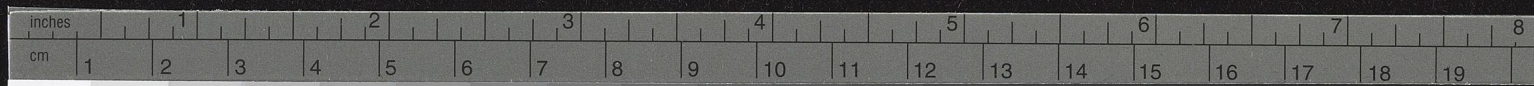
Handwritten musical score, first system. Treble and bass staves. Includes dynamic markings such as *cre* and *f*. Measure numbers 54 and 6 are visible.

Handwritten musical score, second system. Treble and bass staves. Includes dynamic markings such as *pp* and *stacc*. Measure numbers 16 and 9 are visible.

Handwritten musical score, third system. Treble and bass staves. Includes dynamic markings such as *f*. Measure numbers 2, 3, 8, and 8 are visible.

Handwritten musical score, fourth system. Treble and bass staves. Includes dynamic markings such as *poco*, *cre*, and *f*. Measure numbers 6 and 7 are visible.

Handwritten musical score, fifth system. Treble and bass staves. Includes dynamic markings such as *pp*. Measure numbers 12 and 13 are visible.



Handwritten musical notation on a five-line staff, featuring a treble clef and a key signature of two flats. The notation includes various rhythmic values, accidentals, and dynamic markings such as 'p' and 'f'. There are some handwritten annotations and a small '4' at the end of the staff.

Handwritten musical notation on a five-line staff, featuring a treble clef and a key signature of two flats. The notation includes various rhythmic values, accidentals, and dynamic markings such as 'p' and 'f'. There are some handwritten annotations and a small '5' at the end of the staff.

Handwritten musical notation on a five-line staff, featuring a treble clef and a key signature of two flats. The notation includes various rhythmic values, accidentals, and dynamic markings such as 'p' and 'f'. A large section of the notation is heavily scribbled out with black ink. There are some handwritten annotations and a small '6' at the end of the staff.

Handwritten musical notation on a five-line staff, featuring a treble clef and a key signature of two flats. The notation includes various rhythmic values, accidentals, and dynamic markings such as 'p' and 'f'. There are some handwritten annotations and a small '7' at the end of the staff.

Handwritten musical notation on a five-line staff, featuring a treble clef and a key signature of two flats. The notation includes various rhythmic values, accidentals, and dynamic markings such as 'p' and 'f'. There are some handwritten annotations and a small '8' at the end of the staff.



Handwritten musical notation on a grand staff (treble and bass clefs). The music features complex rhythmic patterns, including triplets and sixteenth notes. Dynamic markings such as *pp* (pianissimo) and *mf* (mezzo-forte) are present. A wavy line above the staff indicates a *loco* section. Measure numbers 7, 8, 16, and 17 are visible.

Continuation of the handwritten musical notation. It includes various rhythmic figures and dynamic markings like *pp*. A wavy line above the staff indicates a *loco* section. Measure numbers 18 and 19 are visible.

Continuation of the handwritten musical notation. A large, sweeping melodic line is prominent in the upper voice. Dynamic markings include *pp* and *f* (forte). A wavy line above the staff indicates a *loco* section. Measure numbers 20 and 21 are visible.

Continuation of the handwritten musical notation. It features complex rhythmic patterns and dynamic markings such as *pp* and *f*. A wavy line above the staff indicates a *loco* section. Measure numbers 22 and 23 are visible.

Final section of handwritten musical notation on the page. It includes a grand staff with complex rhythmic patterns and dynamic markings like *pp*. Measure numbers 24 and 25 are visible. The notation concludes with a double bar line and the word *fine*.

HMS 42

