

[SONAT, violini, b. c., A. dur]

Sonata Violino Solo —

Sonata

as

Violino Solo con Basso,

in A. # — ♯ —

Anonyme.

Skrifnae færdikilða Stämmor. 2.

Sonata Violino solo col suo Basso Continuo

Adagio con un dolce maniera

Allegro

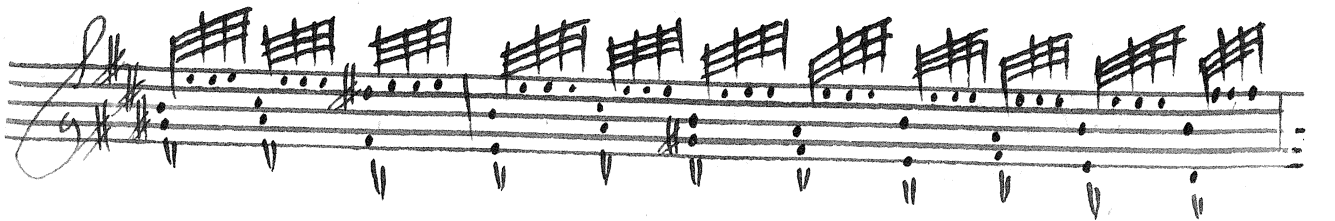
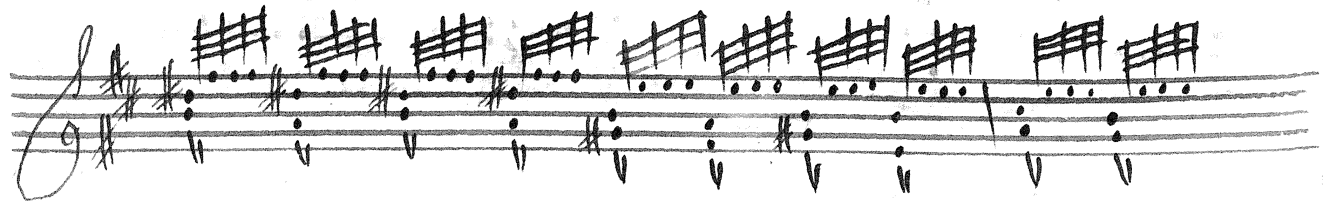
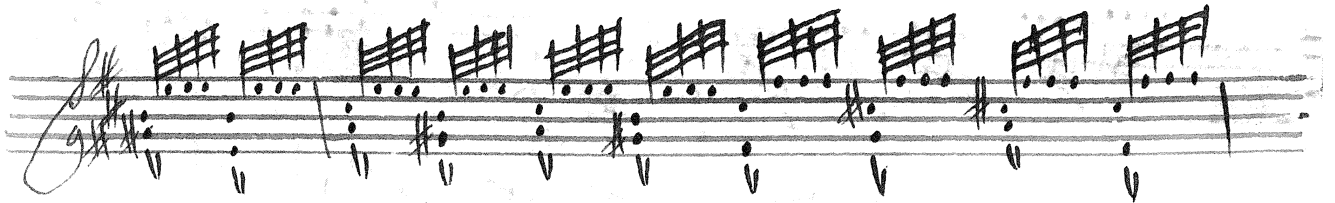
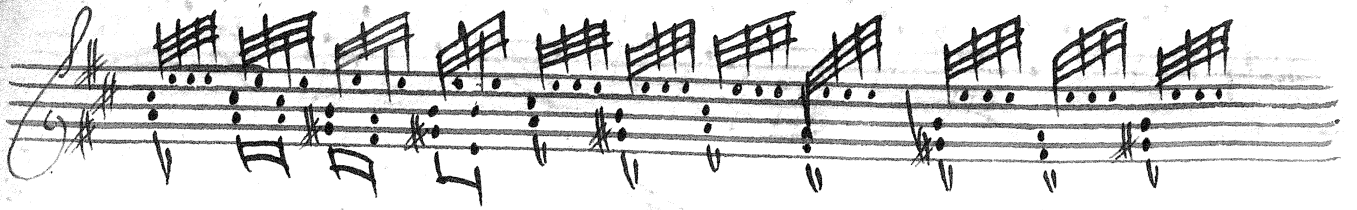
piano *forte*

Ademolo adagio

This image shows a page of handwritten musical notation on ten staves. The notation is written in black ink on aged, slightly yellowed paper. Each staff begins with a treble clef on the top line and a bass clef on the bottom line. The key signature consists of one sharp (F#), indicated by a sharp sign on the F line of the treble clef and the F line of the bass clef. The tempo marking "Ademolo adagio" is written in a cursive hand below the first staff. The music is composed of various rhythmic patterns, including eighth and sixteenth notes, often beamed together in groups. There are also some longer notes and rests. The handwriting is fluid and expressive, with some ink bleed-through visible from the reverse side of the page. The paper has some minor stains and a small circular mark near the bottom left corner.

Adagio

Aria Adagio



Handwritten musical notation on a five-line staff. The key signature is one sharp (F#) and the time signature is 9/8. The notation includes various note values, rests, and dynamic markings. The word "Adagio" is written in a cursive hand above the staff.

Handwritten musical notation on a five-line staff, continuing the piece. It features a melodic line with many slurs and ties, and a bass line with rhythmic accompaniment.

Handwritten musical notation on a five-line staff, showing further development of the musical themes. The notation is dense with notes and rests.

Handwritten musical notation on a five-line staff, continuing the melodic and rhythmic patterns. The piece appears to be in a single system.

Handwritten musical notation on a five-line staff, showing a continuation of the musical ideas. The notation includes many slurs and ties.

Handwritten musical notation on a five-line staff, continuing the piece. The notation is dense with notes and rests.

Handwritten musical notation on a five-line staff, showing further development of the musical themes. The notation includes many slurs and ties.

Handwritten musical notation on a five-line staff, continuing the melodic and rhythmic patterns. The piece appears to be in a single system.

Handwritten musical notation on a five-line staff, showing the final part of the piece. It ends with a double bar line and a repeat sign.

[SONATA, VIOLIN, 2c, Andur]

Anonymous Music Bar

Sonata violino solo.



Handwritten musical score for violin solo, consisting of 12 staves. The notation includes treble clefs, a key signature of one sharp (F#), and a common time signature (C). The score is heavily annotated with performance markings, including dynamic markings such as *sf* (sforzando) and *56*, and fingering numbers (1-5) placed above or below notes. The music features a mix of eighth and sixteenth notes, often beamed together in groups. The paper is aged and shows some staining, particularly in the lower right corner.

Handwritten musical notation on a single staff. The key signature is one sharp (F#). The notation includes a treble clef, a common time signature (C), and various rhythmic values. A measure number '76' is written above the first measure, and '43' is written above a later measure. The staff ends with a double bar line and a sharp sign.

Handwritten musical notation on a single staff. The key signature is one sharp (F#). The notation includes a treble clef and various rhythmic values. A measure number '45' is written above the final measure. The staff ends with a double bar line.

Handwritten musical notation on a single staff. The key signature is one sharp (F#). The notation includes a treble clef and various rhythmic values. Above the staff, there are several circled numbers: 6, 5, 6, 6, 5/6, 6, 5/6. The staff ends with a double bar line.

Handwritten musical notation on a single staff. The key signature is one sharp (F#). The notation includes a treble clef and various rhythmic values. Above the staff, there are circled numbers: 5/6, 5/6. The staff ends with a double bar line and a sharp sign.

Handwritten musical notation on a single staff. The key signature is one sharp (F#). The notation includes a treble clef and various rhythmic values. Above the staff, there are circled numbers: 3, 5/6, 5, 7, 5, 6/5. The staff ends with a double bar line and a sharp sign.

Handwritten musical notation on a single staff. The key signature is one sharp (F#). The notation includes a treble clef and various rhythmic values. Above the staff, there are circled numbers: #, 6, 6, ##, 5/6. The staff ends with a double bar line.

Handwritten musical notation on a single staff. The key signature is one sharp (F#). The notation includes a treble clef and various rhythmic values. Above the staff, there are circled numbers: 5, 5, 7. The staff ends with a double bar line and the word 'fin.' written below.

