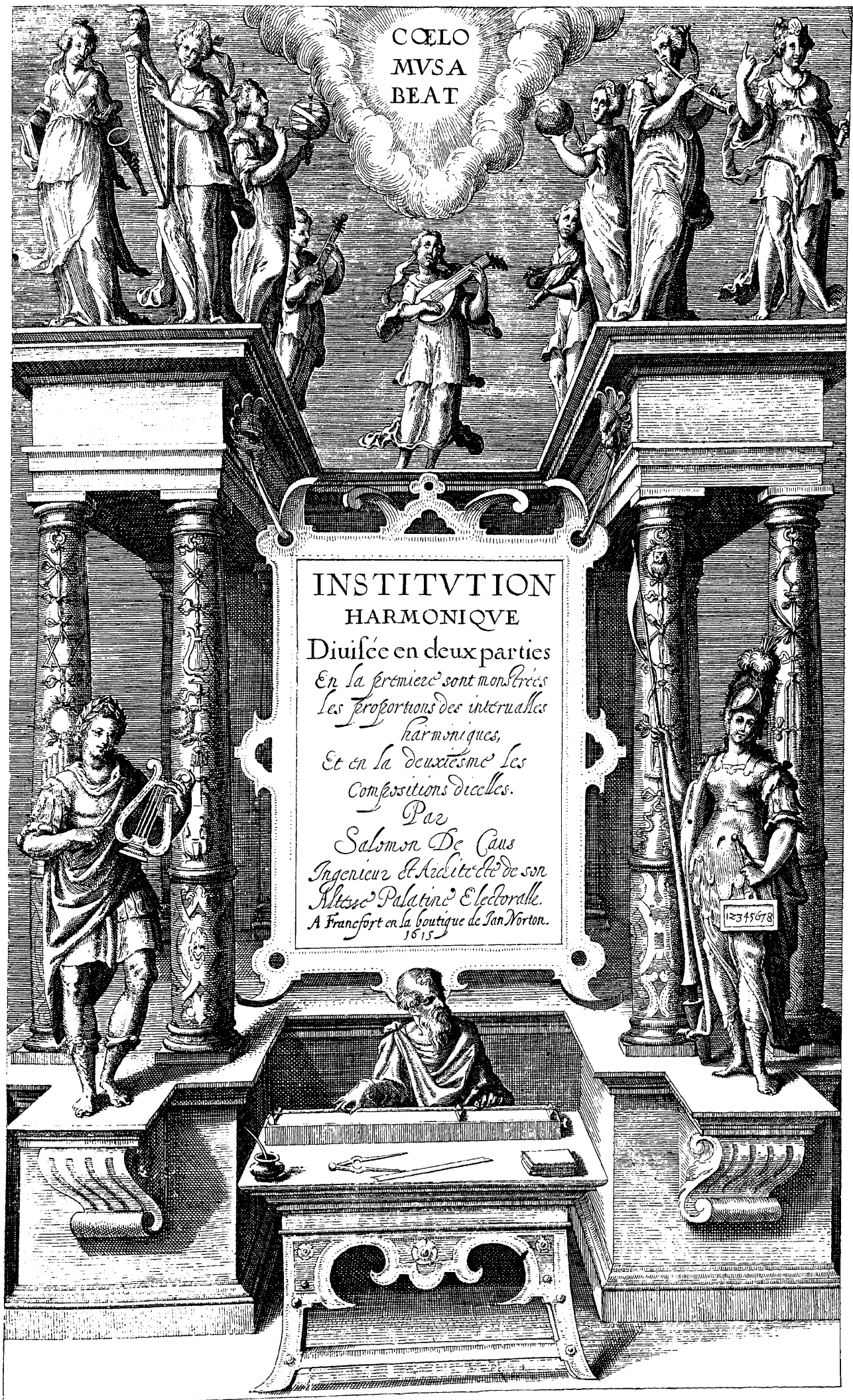


CŒLO
MVSA
BEAT

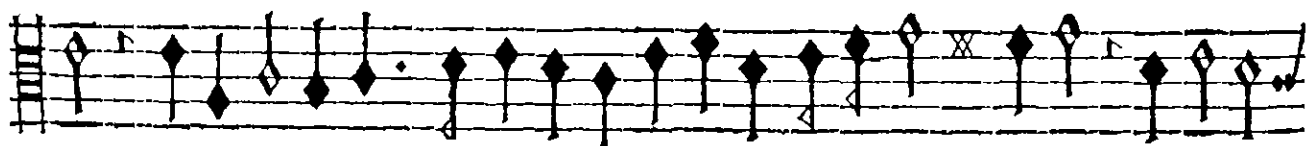
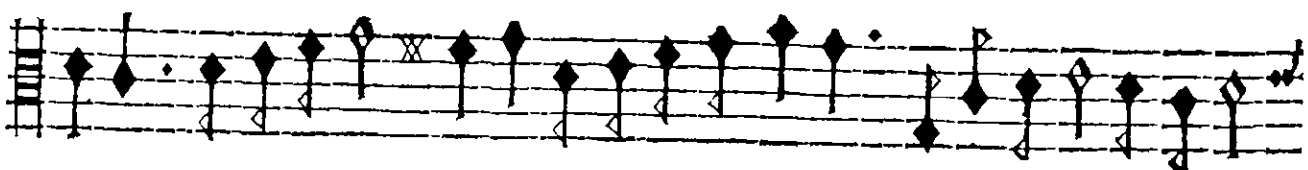
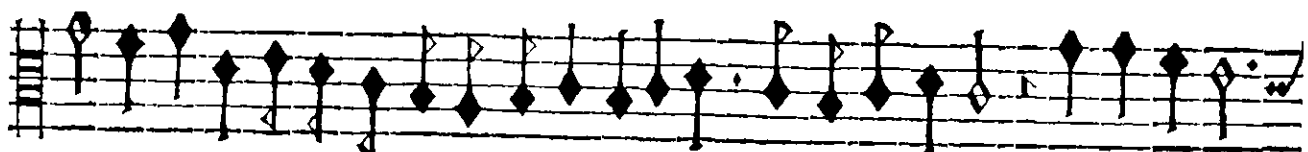
INSTITVTION
HARMONIQUE
Diuisée en deux parties
*En la première sont montrées
Les proportions des intervalles
harmoniques,
Et en la deuxième Les
Compositions dicelles.*
Par
Salomon De Caus
Ingenieur et Architecte de son
Altesse Palatine Electorale.
A Francfort en la boutique de Jan Norton.
1615

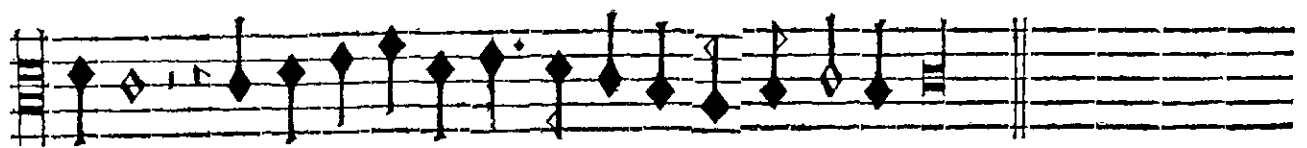
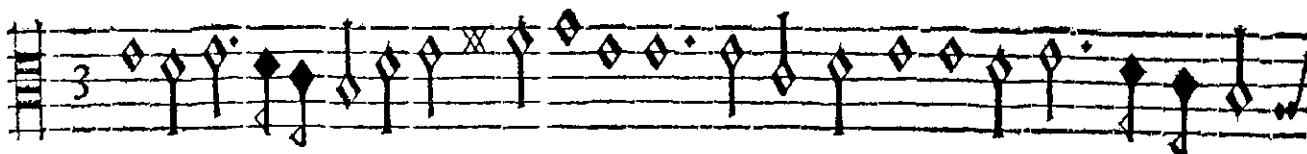
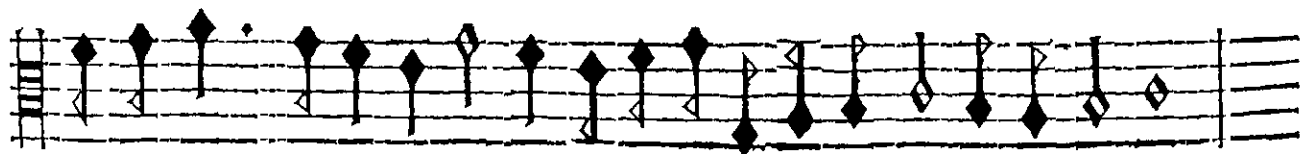


TRIO DE LA PREMIERE
MODE.



TENOR.





Pietri Fillippi.