

# Symphony #21(III)

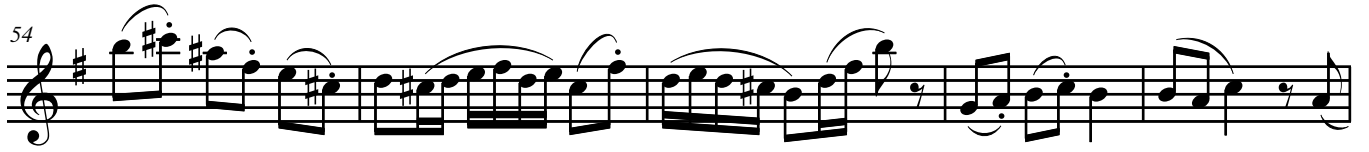
## Violin I

Minuet de Soirée (♩ = circa 100)

Michel Rondeau  
Aug.1st-3rd, 2006

The image displays a musical score for Violin I, titled "Minuet de Soirée" from Symphony #21(III) by Michel Rondeau. The score is written in treble clef with a key signature of one sharp (F#) and a 3/4 time signature. The tempo is marked as "Minuet de Soirée (♩ = circa 100)". The score consists of nine staves of music, with measure numbers 7, 14, 21, 27, 34, 41, 45, and 50 indicated at the beginning of their respective staves. The music features a mix of eighth and sixteenth notes, often beamed together, and includes various articulations such as slurs and accents. The piece concludes with a double bar line at the end of the ninth staff.

## Symphony #21(III) Violin 1



## Symphony #21(III) Violin 1

