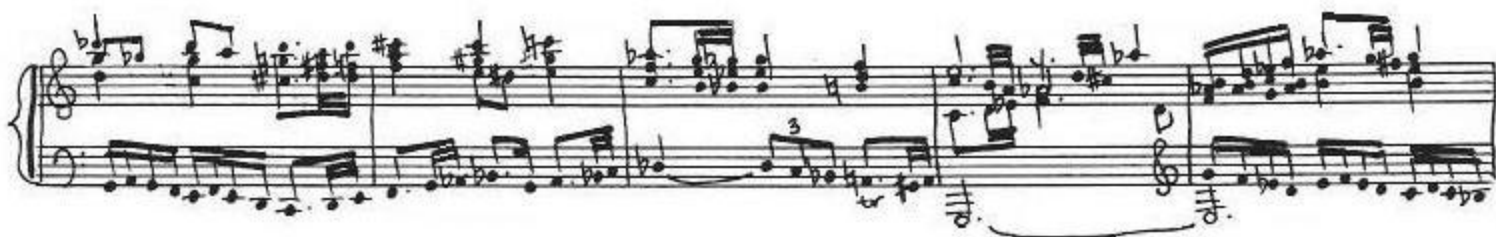


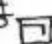
e. Severini

(♩ = 40)

Handwritten musical score for piano, consisting of eight staves. The music is in 3/4 time, marked with a tempo of quarter note = 40. The key signature has one sharp (F#). The notation includes various musical symbols such as notes, rests, accidentals, and dynamic markings like 'p' and 'f'. The score concludes with the instruction 'doppio movimento (♩ = 80)'.



Handwritten musical score for piano, consisting of eight staves. The notation includes treble and bass clefs, key signatures with sharps and flats, and various musical notations such as notes, rests, and accidentals. The score is written in a fluid, handwritten style.

\* continue to  
play with gear 



A handwritten musical score for the song 'The Rose Tree'. The score is written on three systems of staves. The first system consists of a treble and bass staff joined by a brace, with a key signature of one flat (B-flat) and a common time signature. The second system also consists of a treble and bass staff joined by a brace, with a key signature of one flat and a common time signature. The third system consists of a single bass staff with a key signature of one flat and a common time signature. The melody is written in the treble staff of the first two systems and the bass staff of the third system. The lyrics 'The Rose Tree' are written below the first system, and 'The Rose Tree' is written below the second system. The score is written in ink on aged paper.

Handwritten musical notation for the first system of 'The Rose Tree'. It features a treble and bass staff with a key signature of one flat (B-flat) and a common time signature (C). The melody is written in the treble staff, and the bass staff provides a simple accompaniment. The notation is in a cursive, handwritten style.

A handwritten musical score for the song 'The Rose Tree'. The score is written on two staves, a treble staff and a bass staff, using a system of musical notation with notes, rests, and bar lines. The melody is written in the treble staff, and the bass line is in the bass staff. The key signature has one flat (B-flat), and the time signature is 4/4. The music is written in a cursive, handwritten style. The title 'The Rose Tree' is written in a decorative, cursive font at the top of the page. The lyrics are written below the staves, aligned with the notes. The score is a single system, showing the first few measures of the song.

A handwritten musical score for the song 'The Rose Tree'. The score is written on three systems of staves. The first system has a treble and bass staff. The second system has a treble staff and a bass staff. The third system has a treble staff and a bass staff. The music is in 4/4 time, indicated by the 'C' time signature. The key signature has one flat (B-flat). The melody is written in the treble staff, and the accompaniment is in the bass staff. The lyrics 'The Rose Tree' are written below the first staff. The score is handwritten in ink on aged paper.

A handwritten musical score for a piece titled "Loco." The score is written on a grand staff with a treble and bass clef. It features a complex melody with many accidentals (sharps, flats, and naturals) and a dense, fast-moving bass line. The notation is in a cursive, handwritten style.

A handwritten musical score for the song 'The Rose Tree'. The score is written on two staves, a treble staff and a bass staff, both in G major (one sharp) and 2/4 time. The melody is in the treble staff, and the accompaniment is in the bass staff. The piece consists of 12 measures. The first measure has a treble staff with a quarter note G4, a quarter note A4, and a quarter note B4, and a bass staff with a quarter note G2, a quarter note A2, and a quarter note B2. The second measure has a treble staff with a quarter note C5, a quarter note B4, and a quarter note A4, and a bass staff with a quarter note C3, a quarter note B2, and a quarter note A2. The third measure has a treble staff with a quarter note G4, a quarter note A4, and a quarter note B4, and a bass staff with a quarter note G2, a quarter note A2, and a quarter note B2. The fourth measure has a treble staff with a quarter note C5, a quarter note B4, and a quarter note A4, and a bass staff with a quarter note C3, a quarter note B2, and a quarter note A2. The fifth measure has a treble staff with a quarter note G4, a quarter note A4, and a quarter note B4, and a bass staff with a quarter note G2, a quarter note A2, and a quarter note B2. The sixth measure has a treble staff with a quarter note C5, a quarter note B4, and a quarter note A4, and a bass staff with a quarter note C3, a quarter note B2, and a quarter note A2. The seventh measure has a treble staff with a quarter note G4, a quarter note A4, and a quarter note B4, and a bass staff with a quarter note G2, a quarter note A2, and a quarter note B2. The eighth measure has a treble staff with a quarter note C5, a quarter note B4, and a quarter note A4, and a bass staff with a quarter note C3, a quarter note B2, and a quarter note A2. The ninth measure has a treble staff with a quarter note G4, a quarter note A4, and a quarter note B4, and a bass staff with a quarter note G2, a quarter note A2, and a quarter note B2. The tenth measure has a treble staff with a quarter note C5, a quarter note B4, and a quarter note A4, and a bass staff with a quarter note C3, a quarter note B2, and a quarter note A2. The eleventh measure has a treble staff with a quarter note G4, a quarter note A4, and a quarter note B4, and a bass staff with a quarter note G2, a quarter note A2, and a quarter note B2. The twelfth measure has a treble staff with a quarter note C5, a quarter note B4, and a quarter note A4, and a bass staff with a quarter note C3, a quarter note B2, and a quarter note A2. The score is written in ink on aged paper.

A handwritten musical score for the song 'The Rose Tree'. The score is written on two staves, one for the treble clef and one for the bass clef. The key signature has one flat (B-flat), and the time signature is 3/4. The melody is written in the treble clef, and the accompaniment is in the bass clef. The piece consists of a single system of music. The melody starts with a quarter note G4, followed by a quarter note A4, and then a quarter note B4. The accompaniment starts with a quarter note G3, followed by a quarter note A3, and then a quarter note B3. The piece ends with a double bar line.

Handwritten musical score for piano, first system. The music is in treble and bass staves, featuring complex rhythmic patterns and accidentals. A tempo marking "a tempo" is visible below the first staff. The key signature has two sharps (F# and C#).

Handwritten musical score for piano, second system. The music continues with complex rhythmic patterns and accidentals. The tempo marking "a tempo" is visible below the first staff.

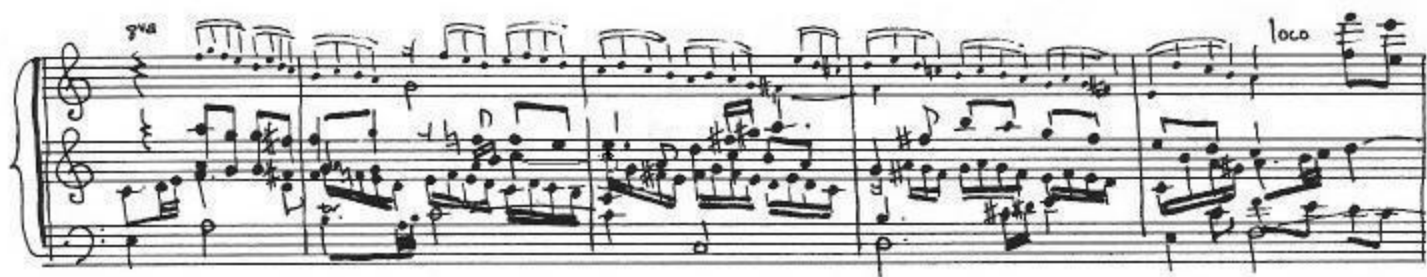
Handwritten musical score for piano, third system. The music continues with complex rhythmic patterns and accidentals.

Handwritten musical score for piano, fourth system. The music continues with complex rhythmic patterns and accidentals. A tempo marking "a tempo" is visible below the first staff.

Handwritten musical score for piano, fifth system. The music continues with complex rhythmic patterns and accidentals.

Handwritten musical score for piano, sixth system. The music continues with complex rhythmic patterns and accidentals.

Handwritten musical score for piano, seventh system. The music continues with complex rhythmic patterns and accidentals. A tempo marking "a tempo" is visible below the first staff.





This is a handwritten musical score for piano, consisting of seven systems of staves. The notation is complex, featuring many accidentals (sharps, flats, naturals), slurs, and dynamic markings. Key features include:

- System 1:** Starts with a treble clef and a key signature of one sharp (F#). It includes a marking "8va" at the beginning.
- System 2:** Features a triplet of eighth notes in the treble and a "loco" marking.
- System 3:** Continues the melodic and harmonic development.
- System 4:** Includes a marking "8a" and ends with a triplet of eighth notes.
- System 5:** Features a triplet of eighth notes in the treble.
- System 6:** Includes a triplet of eighth notes in the treble.
- System 7:** The final system, ending with a double bar line.

april '78 / july '79 Winston Salem NC 27107-05