

1. Overture

Rodrigo-Suite

Georg Friedrich Händel

Viola

7

12

19

23

28

32

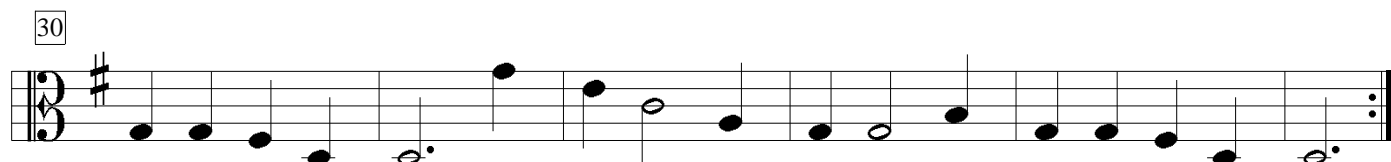
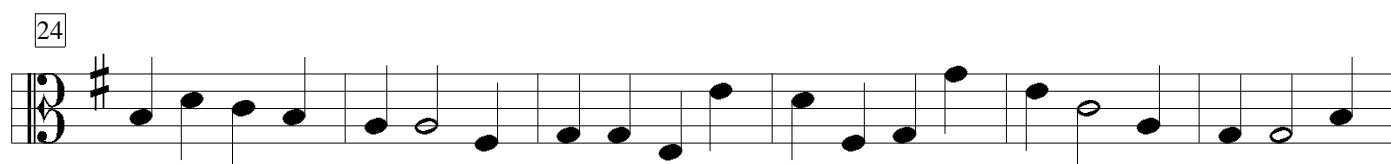
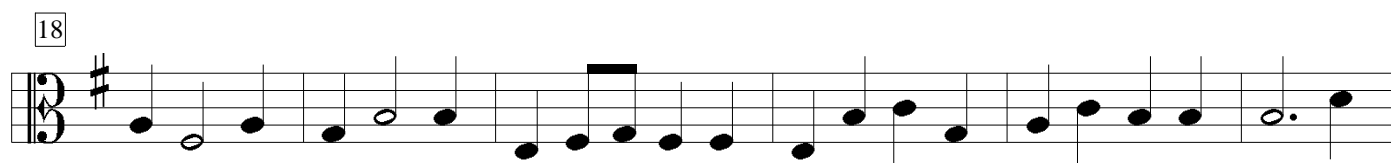
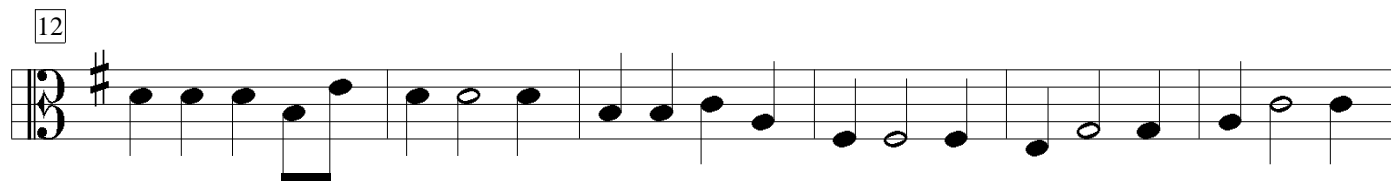
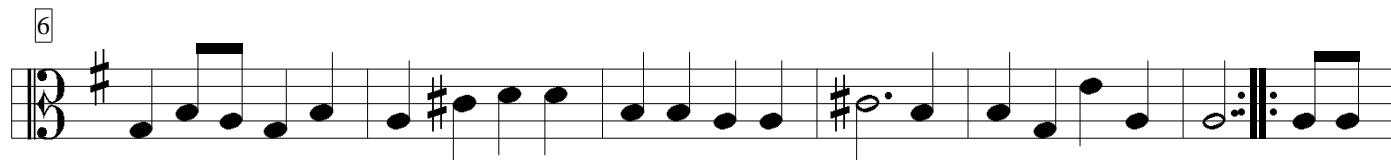
36

40

45

52

2. Bourrée



3. Menuet

Viola

7

14

20

26

4. Matelot

Viola

7

13

19

26

5. Sarabande

Viola

8

16

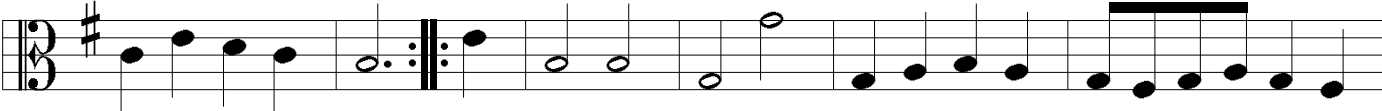
24

6. Rigaudon

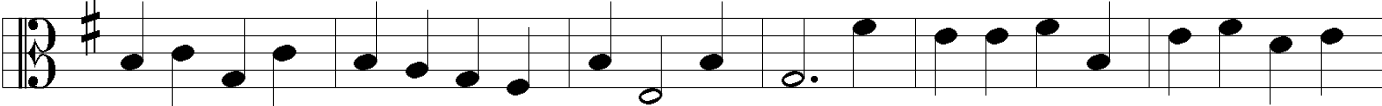
Viola




8




14



20



26



7. Menuet II

Viola

Musical notation for the first system of '7. Menuet II' for Viola. It is in G major (one sharp) and 3/4 time. The staff contains 12 measures of music, ending with a repeat sign.

10

Musical notation for the second system of '7. Menuet II' for Viola, starting at measure 10. It continues the melody from the first system.

20

Musical notation for the third system of '7. Menuet II' for Viola, starting at measure 20. It continues the melody from the second system.

8. Gigue

Viola

7

12

17

22