

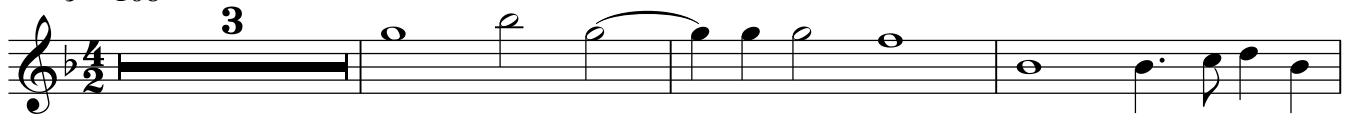
In Nomine Through All Parts / In Nomine Fantasia

Great Bass Recorder

(Adapted for recorders by separating the 2 bass parts into bass and C-bass by MG. This causes In Nomines 5 and 6 to exchange parts sometimes)

Alfonso Ferrabosco II

$\text{♩} = 108$



7



11



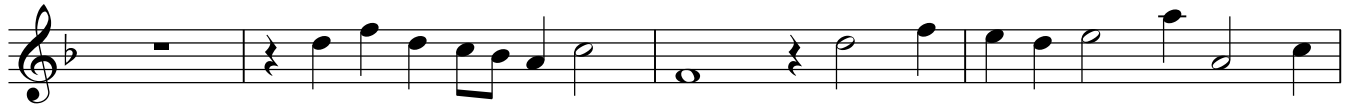
15



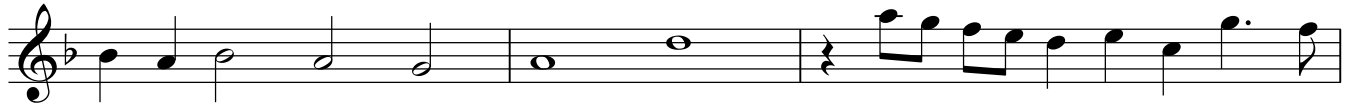
20



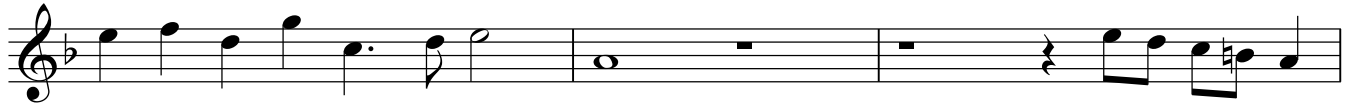
23



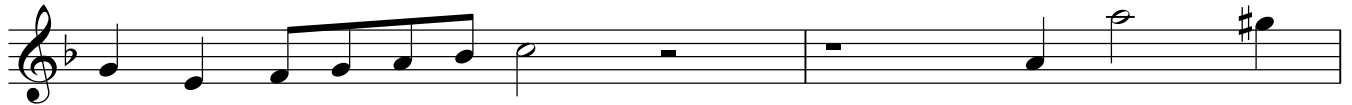
27



30



33



35



Great Bass Recorder

[illegible]

41

[illegible][illegible]

53 IN5

IN5

57


57

61 IN5cont.

65



69 IN6



2

[illegible]

79



83



87



90

