

# Gloria in excelcis Deo

Mass of the Nativity

♩ = 120

Timpani

*f*

*tr*

7

13

*tr*

19

25

*mp*

33

42

51

60

*tr*

*ff*

*tr*

68

77

86

*f*

*cresc...*

94

100 *tr* *poco a poco cresc...*

*dim...*

108 *tr* *fff* *f* *tr*

115

121

131 *cresc.*

141

150

159

168

177 *Rit.....* *ff* *tr*

184 *fff*

190 *dim...* *f* *ff* *dim...*

197



204



209



# Alleluia

Mass of the Nativity

♩=120

Timpani



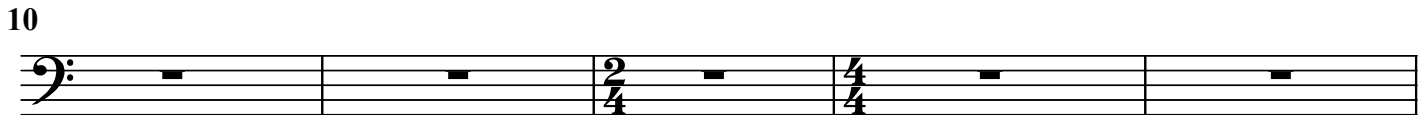
*ff*

6

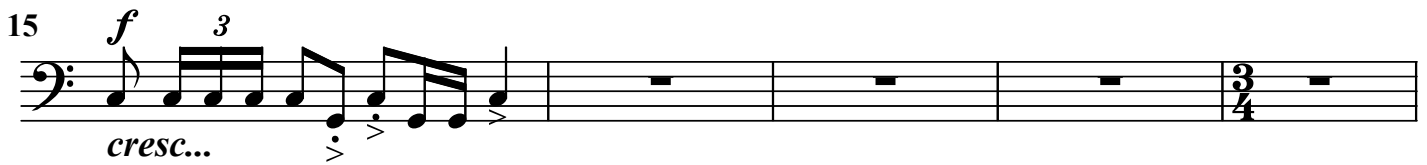


*f cresc...*

10



15



*f cresc...*

20

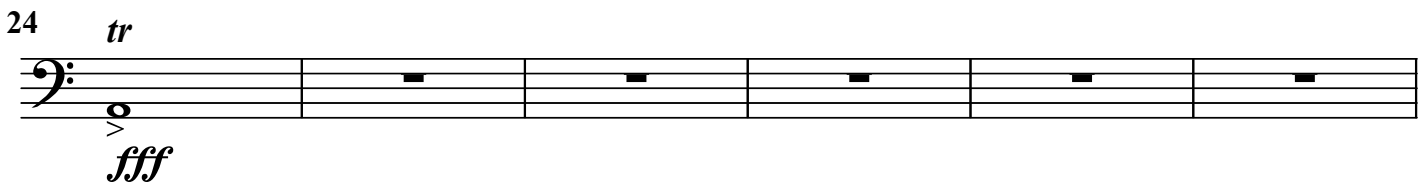


*cresc...*  
*mf*

22

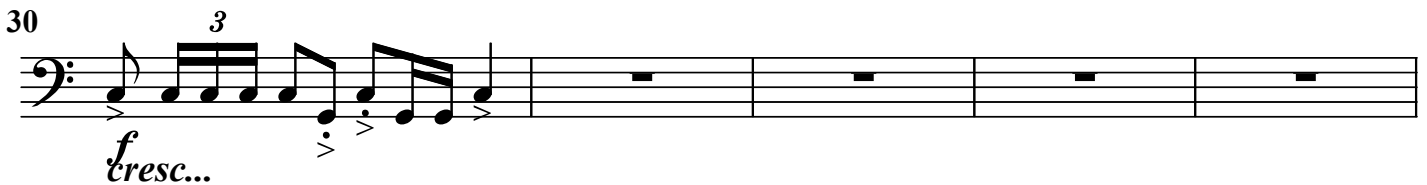


24



*tr*  
*fff*

30



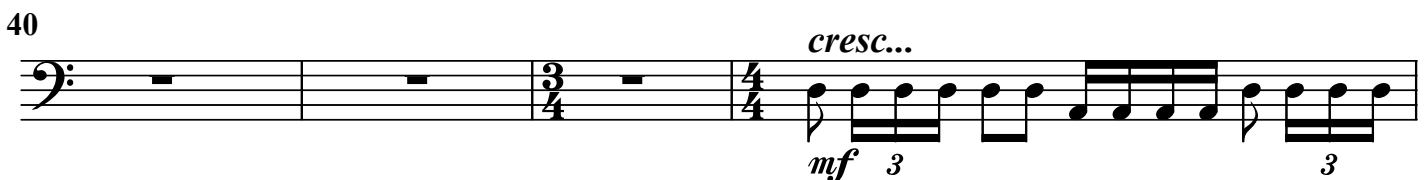
*f cresc...*

35



*cresc...*

40



*cresc...*  
*mf*

44

Musical staff 44 in bass clef. It contains two measures. The first measure has a quarter rest followed by a quarter note. The second measure contains a triplet of eighth notes, a quarter note, and another triplet of eighth notes.

46

*Rall.*.....

Musical staff 46 in bass clef. It contains two measures. The first measure has a triplet of eighth notes. The second measure contains a triplet of eighth notes, a quarter note, and a trill (tr) over a quarter note. The piece ends with a double bar line. The dynamic marking *fff* is placed below the final note.

# Credo in unum Deum

Mass of the Nativity

Timpani

$\text{♩} = 80$

*f*

1.

2.

8

16

*mf*

*cresc...*

*ff*

25

*dim...*

*f*

34

*ff*

43

*Rall.....*

*tr*

*mf*

*cresc...*

50

$\text{♩} = 90$

57

64

*tr*

*f cresc...*

*ff*

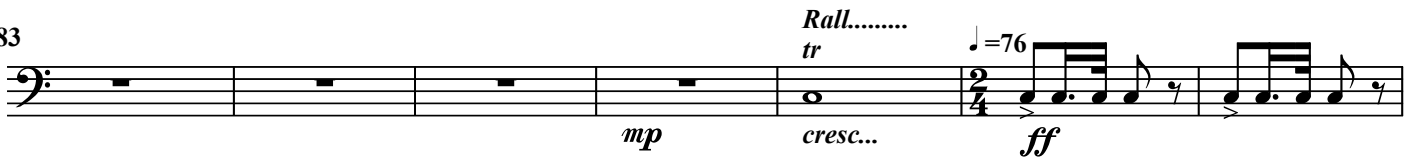
71

*tr*

77



83



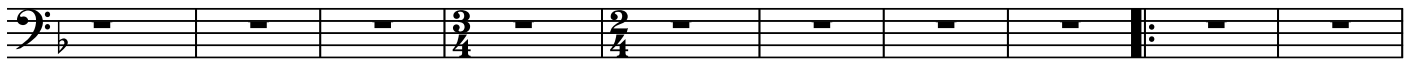
90



98

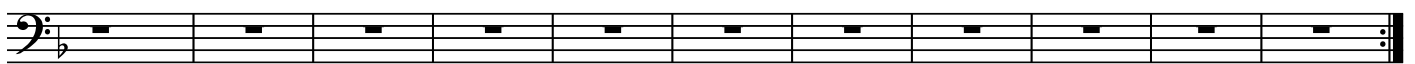


108



1.

118

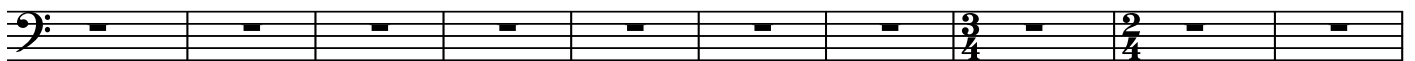


2.

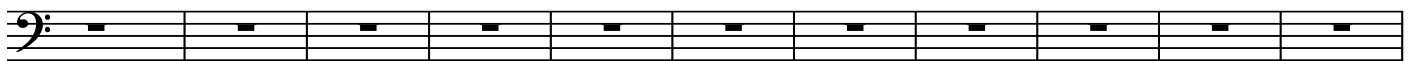
129



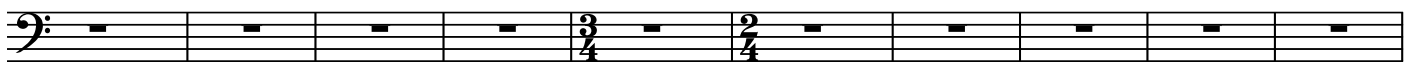
140



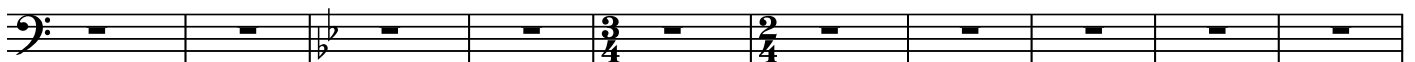
150



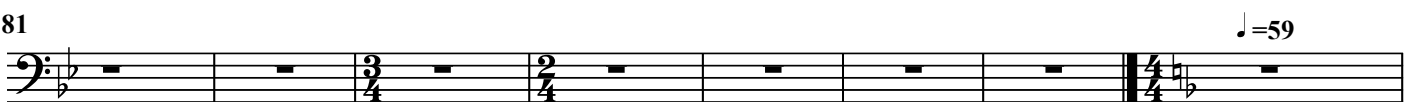
161



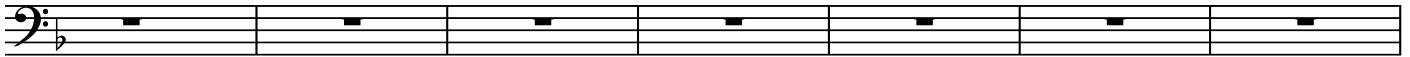
171



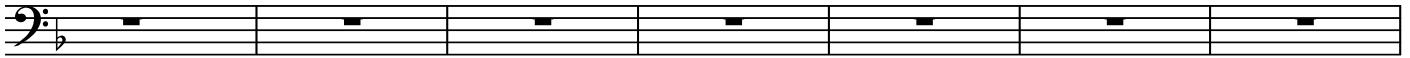
181



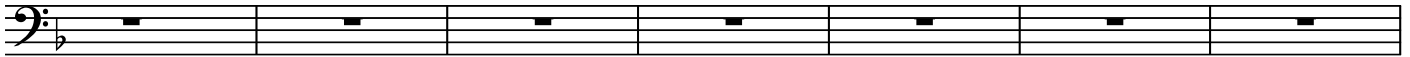
189



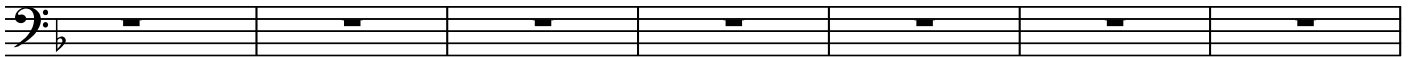
196



203



210



217

*Rall.....*

♩=100

*tr*



226

*tr*



234

*tr*

*tr*

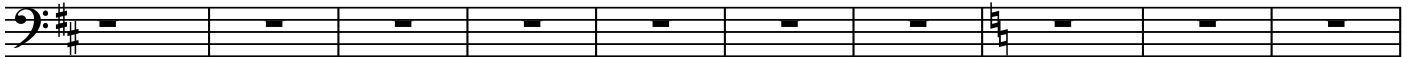
*ff*

*cresc...*

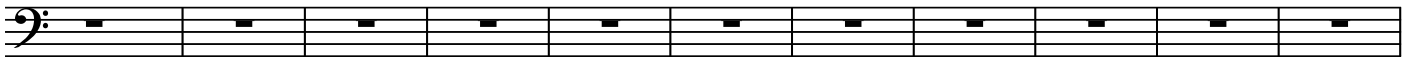
*fff*



244



254



265

*Rall.....*

*tr*

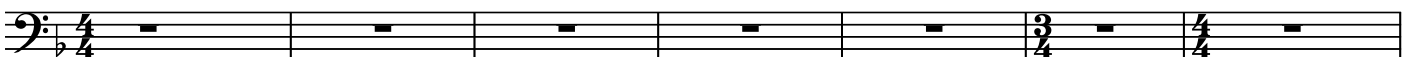
*f cresc...*

*fff*



275

♩=50

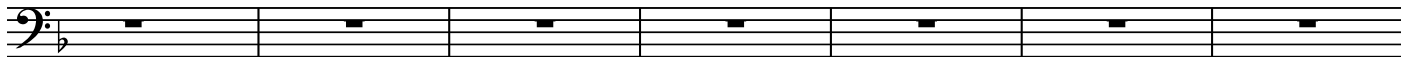


282

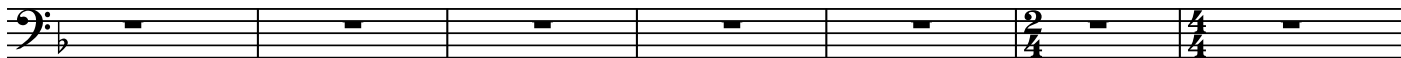




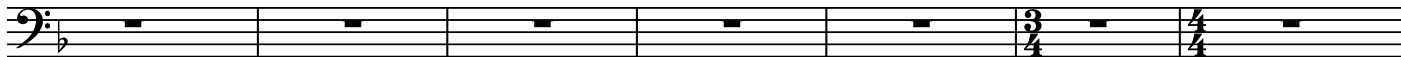
289



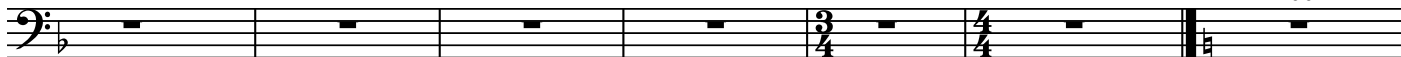
296



303



310



317



323



329



334



*cresc...*

1.

340

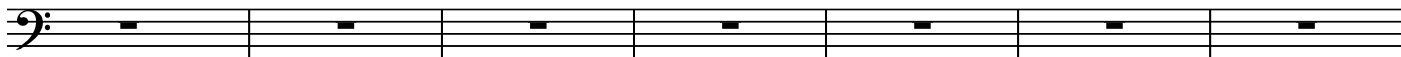


2.

345



351



358



*Rit.....*

*A Tempo*

*f*

*ff*

364 *tr* *tr* *tr*  
*mf*

370 *Rit.....* *A Tempo*

377

384 *tr* *ff*  $\text{♩} = 80$

390 *tr* *tr*

395 *tr*

400 *tr*

406 *dim...* *mf* *tr* *ff*  $\text{♩} = 73$

412

421 *tr*

429 *Rall.....* *3* *cresc....*

# Sanctus Dominus

Mass of the Nativity

Timpani  $\text{♩} = 90$

6 *f*

10

16 *mf* *cresc...*

23 *tr* *Rit.....* *ff*

30  $\text{♩} = 80$  *cresc...* *cresc...*

36 *fff*

40 1.

47

54 2. *tr*

61 *Rall.....* *tr* *fff*

68 *cresc...* *cresc...*

# Acclamation 2

Mass of the Nativity

Timpani

♩ = 85

*mf*

*Rall.....*

*tr*

*ff*

6

The musical score for Timpani is written in bass clef with a key signature of two flats (Bb, Eb). The first staff begins with a tempo marking of quarter note = 85. It contains five measures of music, each with a whole rest. The first measure is marked *mf*. The second measure is marked *Rall.....*. The third measure is marked *tr*. The fourth measure is marked *ff*. The fifth measure is marked *ff*. The second staff begins with a measure rest labeled '6', followed by three measures of music, each with a whole rest. The first measure is marked *tr*. The second measure is marked *ff*. The third measure is marked *ff*. The piece ends with a double bar line.