

## Klarinette in B

Franz Danzi (1763-1826)  
Quintett op. 68 No. 2 in F-Dur

Allegro

7 *f* *p*

13 *f* *p*

19 *cresc.*

24 *f* *f*

29 *dolce*

34 *f*

42 *f*

48 *p* *cresc.* *f* *p* *f*

53 *p* *f*

60 *f*

66 *p*

72 *4* *2* *p* *p*

85

93

100

106

112

117

121

128

136

142

147

152

157

*p* *f* *p* *f* *p* *p* *f* *p* *f* *cresc.* *f*

4

Musical score for Clarinet in B, measures 165-201. The score is in G major (one sharp) and 2/4 time. It consists of eight staves of music. Measure 165 starts with a piano (*p*) dynamic. Measure 173 has a piano (*p*) dynamic. Measure 177 has a forte (*f*) dynamic. Measure 181 has a piano (*p*) dynamic. Measure 189 has a forte (*f*) dynamic. Measure 195 has a piano (*p*) dynamic. Measure 201 has a forte (*f*) dynamic. There is a triplet of eighth notes in measure 181.

## Andante quasi allegretto

Musical score for Clarinet in B, measures 1-22. The score is in G major (one sharp) and 2/4 time. It consists of six staves of music. Measure 1 starts with a mezzo-forte (*mf*) dynamic. Measure 6 has a piano (*p*) dynamic. Measure 12 has a mezzo-forte (*mf*) dynamic. Measure 17 has a triplet of eighth notes. Measure 22 has a triplet of eighth notes.

28 *p* *f*

33 *p* *f*

39 *p* *p*

44

50

56 *p* *f* *p*

62

68 *f* *p*

73

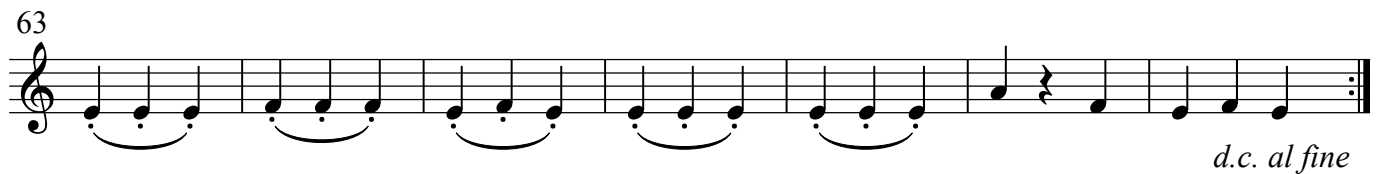
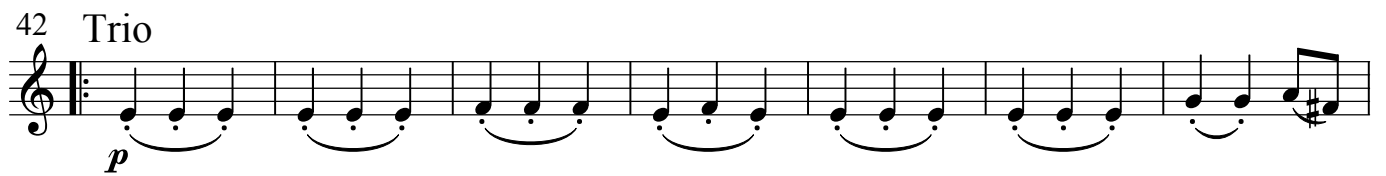
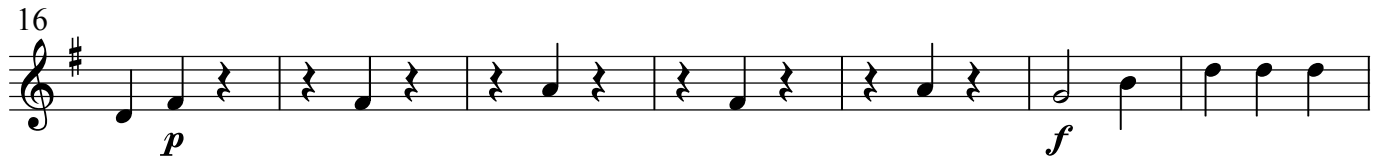
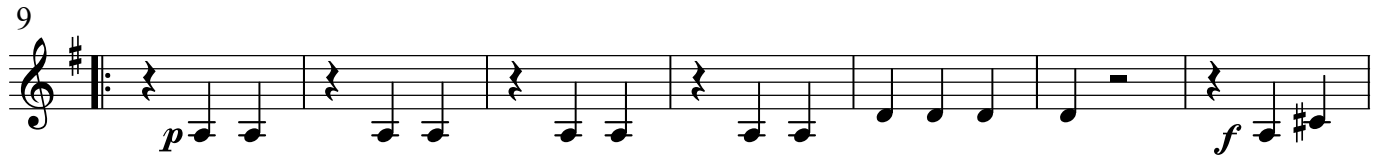
78

83 *p* *cresc.*

88 *f* *p*

93 *f*

## Minuetto allegretto



## Allegretto

*p*

6

*f*

14

*p*

20

25

*f*

32

*p*

38

*f*

44

49

57

4

6

Detailed description of the musical score: The score is for a Clarinet in B, written in G major (one sharp) and 6/8 time. The tempo is marked 'Allegretto'. The piece consists of ten staves of music. The first staff begins with a piano (*p*) dynamic and features a continuous eighth-note melody. The second staff continues the melody and includes a forte (*f*) dynamic marking. The third staff returns to piano (*p*). The fourth staff features a piano (*p*) dynamic with a fermata over a dotted quarter note. The fifth staff has a piano (*p*) dynamic with a crescendo leading to a forte (*f*) dynamic. The sixth staff begins with a piano (*p*) dynamic. The seventh staff features a forte (*f*) dynamic. The eighth staff continues with a piano (*p*) dynamic. The ninth staff has a piano (*p*) dynamic with a fermata over a dotted quarter note. The tenth staff concludes with a piano (*p*) dynamic and includes a four-measure rest and a six-measure rest.

72

80

86 *cresc. f p*

92

97 *f p*

106

112 *f*

119 *p*

125

131 *f*

136

142 *p cresc. f*

149

155

161

166

174

182

194

200

210

216

222

228

*p*

*f*

*p*

*f*

*p*

*f*

*f*