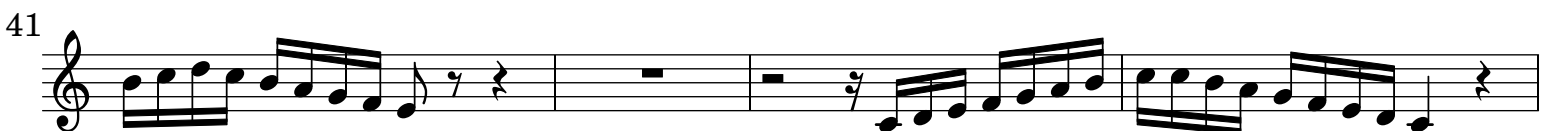
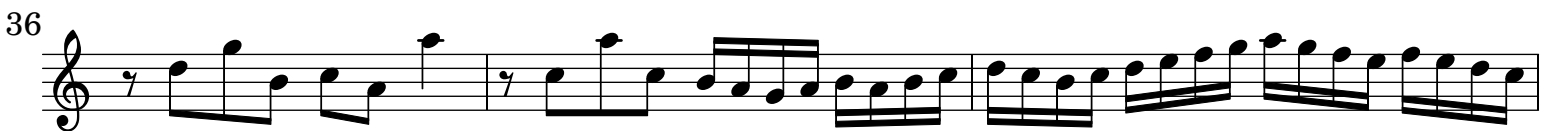
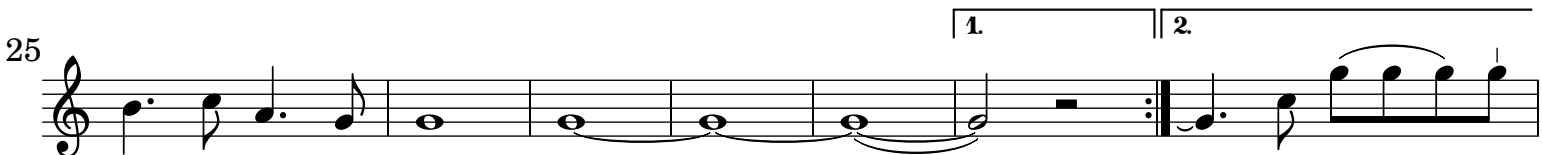


Ouverture Wassermusik [TWV 55:C3]

Violino I

G. Ph. Telemann (1681-1767)

[1.] Ouverture



Musical score for Violino I, measures 45-90. The score is written in treble clef with a key signature of one sharp (F#). The music consists of ten staves of notation. Measure 45 begins with a whole rest, followed by a quarter rest and a sixteenth rest, then a quarter note G4. Measures 46-48 feature a continuous eighth-note pattern. Measure 49 continues the eighth-note pattern. Measure 50 features a sixteenth-note pattern. Measure 51 continues the sixteenth-note pattern. Measure 52 features a sixteenth-note pattern with a sharp sign above the final note. Measure 53 continues the sixteenth-note pattern. Measure 54 features a sixteenth-note pattern with a flat sign above the final note. Measure 55 continues the sixteenth-note pattern. Measure 56 features a sixteenth-note pattern with a flat sign above the final note. Measure 57 continues the sixteenth-note pattern. Measure 58 features a sixteenth-note pattern. Measure 59 continues the sixteenth-note pattern. Measure 60 features a sixteenth-note pattern. Measure 61 features a sixteenth-note pattern with a dynamic marking of *p:* at the beginning and *Forte* at the end. Measure 62 continues the sixteenth-note pattern. Measure 63 features a sixteenth-note pattern. Measure 64 continues the sixteenth-note pattern. Measure 65 features a sixteenth-note pattern with a sharp sign above the final note. Measure 66 continues the sixteenth-note pattern. Measure 67 features a sixteenth-note pattern. Measure 68 continues the sixteenth-note pattern. Measure 69 features a sixteenth-note pattern. Measure 70 continues the sixteenth-note pattern. Measure 71 features a sixteenth-note pattern. Measure 72 continues the sixteenth-note pattern. Measure 73 features a sixteenth-note pattern. Measure 74 continues the sixteenth-note pattern. Measure 75 features a sixteenth-note pattern. Measure 76 continues the sixteenth-note pattern. Measure 77 features a sixteenth-note pattern. Measure 78 continues the sixteenth-note pattern. Measure 79 features a sixteenth-note pattern. Measure 80 continues the sixteenth-note pattern. Measure 81 features a sixteenth-note pattern. Measure 82 continues the sixteenth-note pattern. Measure 83 features a sixteenth-note pattern. Measure 84 continues the sixteenth-note pattern. Measure 85 features a sixteenth-note pattern. Measure 86 continues the sixteenth-note pattern. Measure 87 features a sixteenth-note pattern. Measure 88 continues the sixteenth-note pattern. Measure 89 features a sixteenth-note pattern. Measure 90 continues the sixteenth-note pattern.

84

87

90

93

95

97

102

107

[2.] Sarabande. Die schlaffende Thetis - doucement

6

19

p:

[3.] Bourrée. Die erwachende Thetis

5

13

11

Finis

15

Da C.

[4.] Loure. Der verliebte Neptunus

8

16

[5.] Die gegen verliebte Amphidritte. Gavotte

6

12

19

26

Da C.

[6.] Harlequinade. Die scherzenden Tritonen

5

9

17

23

30

Fine

pizzicato

col arco.

pizzicato

Da C.

[7.] Der stürmende Aeolus

5

9

12

15

18

22

26

31

35

38

41

45

[8.] Menuet. Der angenehme Zephir

10

19

28

p:

Finis

Da C.

[9.] Gigue. Ebbe und Fluth

Musical score for Gigue "Ebbe und Fluth" in 6/8 time. The score consists of five staves of music. The first staff begins with a treble clef and a 6/8 time signature. The music features a rhythmic pattern of eighth and sixteenth notes, often beamed together. The key signature has one flat (B-flat). The score includes repeat signs and first/second endings. Measure numbers 7, 13, 27, 32, and 37 are indicated at the start of their respective staves.

[10.] Canarie. Die lustigen Bootsleute

Musical score for Canarie "Die lustigen Bootsleute" in 6/8 time. The score consists of six staves of music. The first staff begins with a treble clef and a 6/8 time signature. The music features a rhythmic pattern of eighth and sixteenth notes, often beamed together. The key signature has one flat (B-flat). The score includes repeat signs and first/second endings. Measure numbers 5, 16, 21, 26, and 31 are indicated at the start of their respective staves. The piece concludes with the instruction *il Fine*.