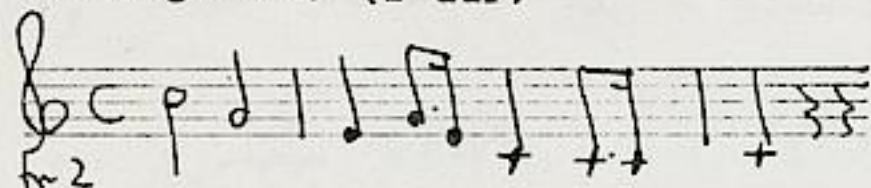


Marsch/Due Clarinetti./Due Oboe./Due Corni./Due Trombe./  
 Due Fagotti./ (B-dur)



Ms. ca. 1800.

13 x 17,5 cm.

WZ: [IM]-HOF

9 St.: ob 1,2, cl 1,2, cor 1,2, tr 1,2, fag 1.  
 fag 2 fehlt.

je 1 Bl.

Alte Sign.: N<sup>ro</sup> 11.

1223

<sup>N<sup>o</sup> 11.</sup>  
Marsch

1

Due Clarinetti.

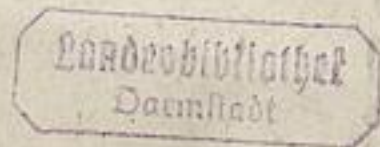
Due Oboe.

Due Corni.

Due Trombe.

Due Fagotti.

10 Cee

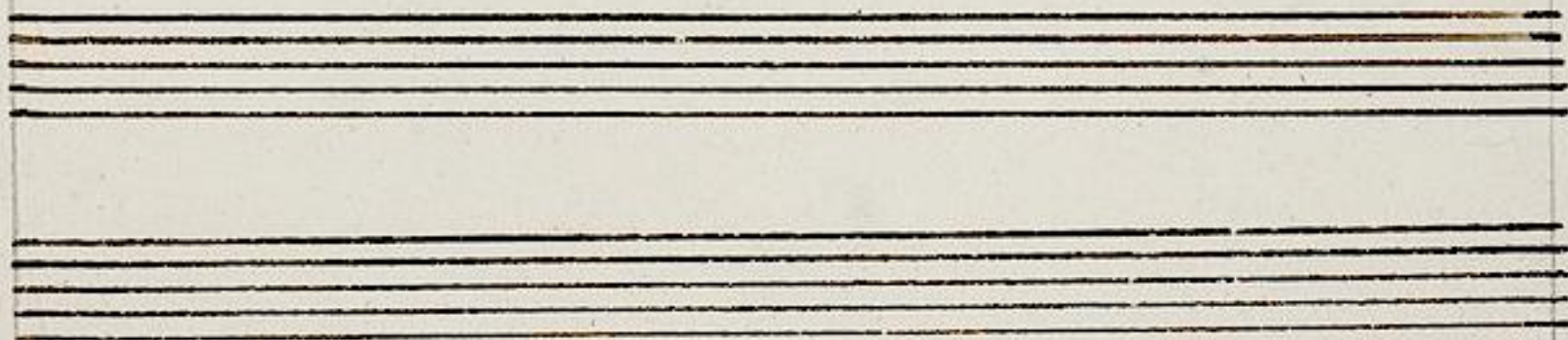
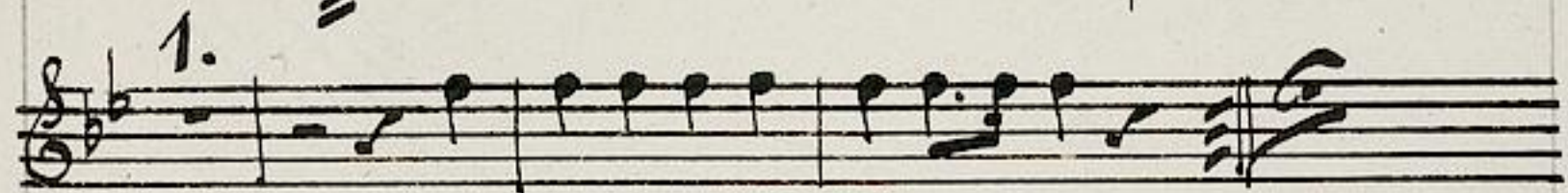
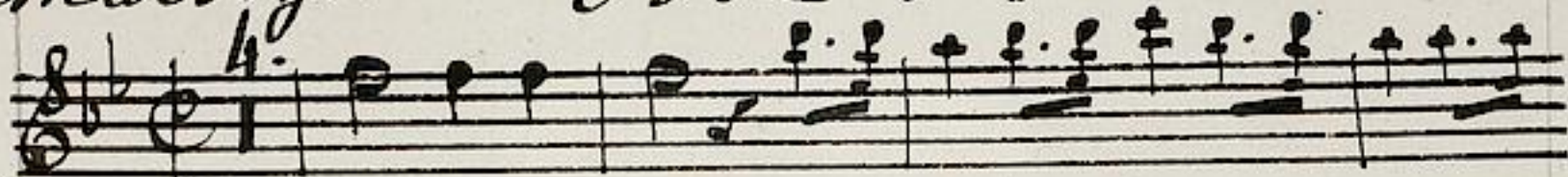




Marsch. 1223

Oboe 1<sup>mo</sup>

2





Marsch. <sup>1923</sup>

Oboe 2<sup>do</sup>

3





Marsch. 1223 Clarinetto 1<sup>mo</sup>

4

Handwritten musical score for Clarinet 1<sup>mo</sup>. The score is written on three staves in treble clef with a 4/4 time signature. The key signature has one sharp (F#). The notation includes various rhythmic values, accidentals, and dynamic markings such as 'p.' and 'f.'. The first staff begins with a first ending bracket labeled '1.'. The second staff contains a complex passage with many beamed notes and rests. The third staff concludes with a final cadence.

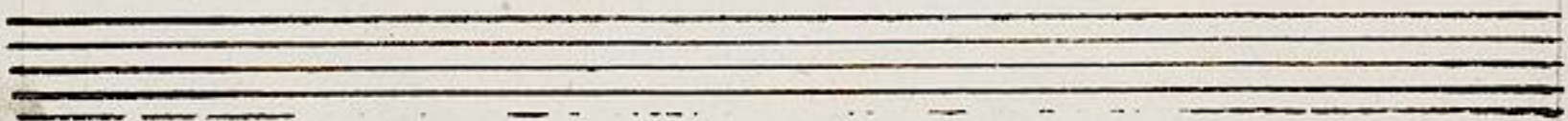
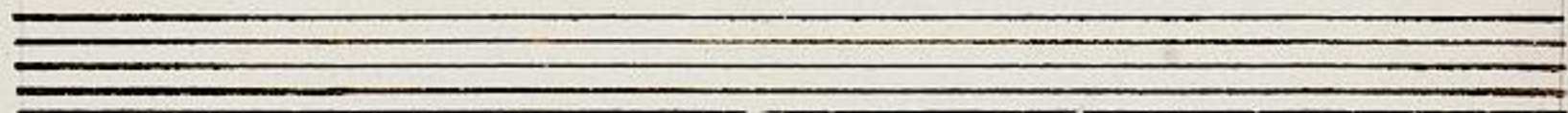
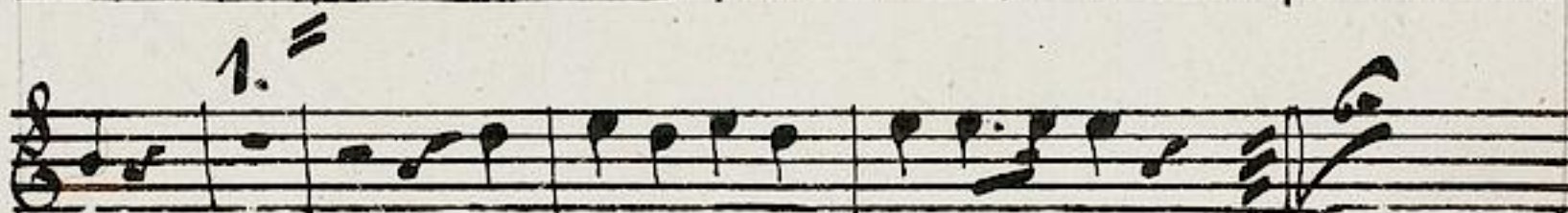
Four empty musical staves, each consisting of five horizontal lines, located below the first three staves of the score.



Marschc. 1223

Clarinetto  $\text{B}^{\flat}$

5

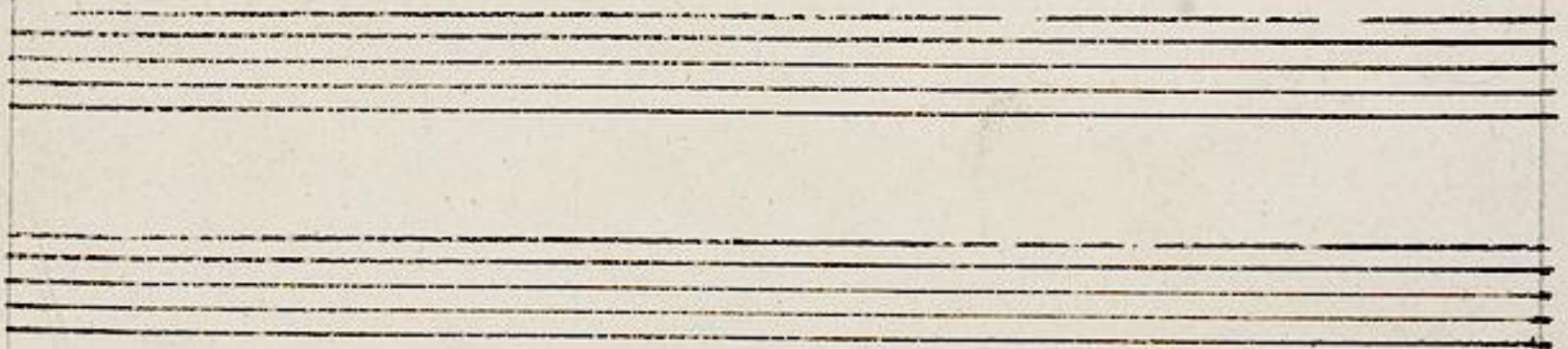
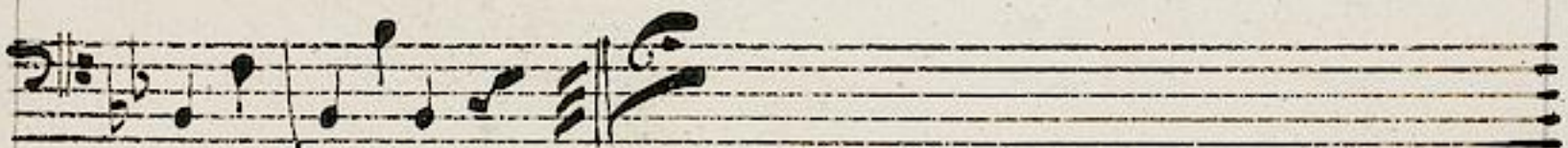
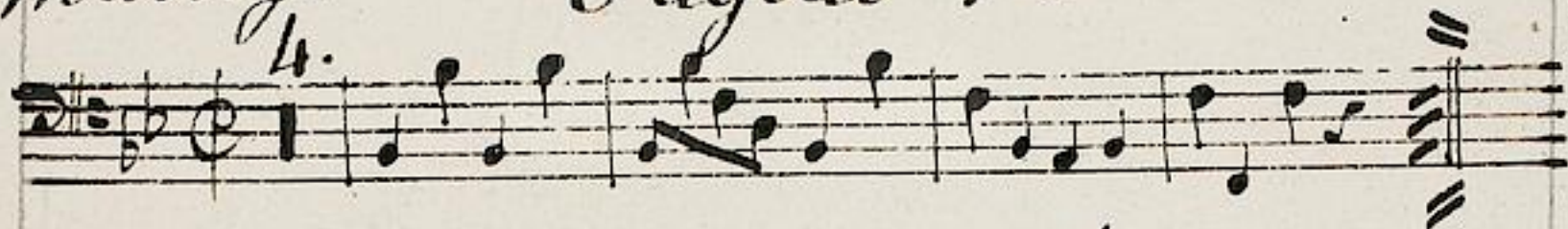




Marsch. 1223

Fagotte 1<sup>m</sup>

6

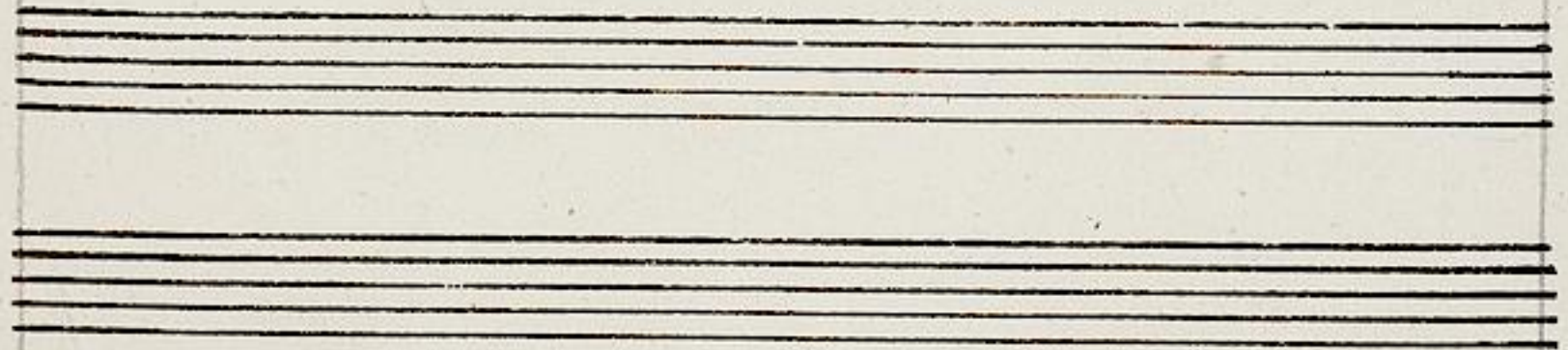




Marsch. 1223

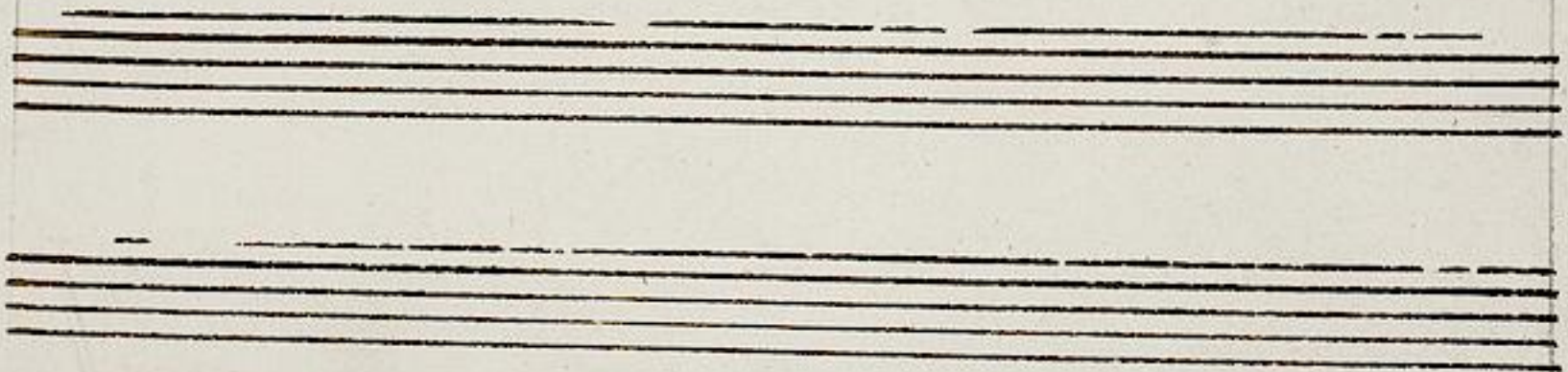
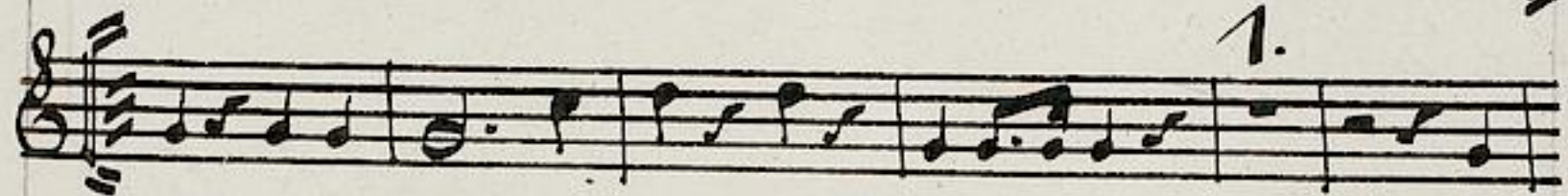
Cornu 1<sup>mo</sup>

2





Marsche. 1223 Cornu 2<sup>o</sup>





Marsch. 1223 Tromba 1<sup>ma</sup>

9

The image shows a handwritten musical score for Tromba 1<sup>ma</sup>. The score is written on three staves. The first staff begins with a treble clef and a common time signature (C). The music consists of a series of notes and rests, with some notes beamed together. The second staff continues the melody and includes a triplet of notes marked with a '3.' above them. The third staff concludes the piece with a final note and a fermata. Below the three staves of music, there are two sets of empty five-line staves, suggesting a multi-measure rest or a section of music that is not present in this page.





Marsch. 1223 Tromba 2<sup>da</sup>

10

Handwritten musical score for Tromba 2<sup>da</sup>, page 10. The score consists of five staves. The first staff is a single melodic line. The second staff is a bass line with two first endings marked '1.'. The third staff is a bass line with a '4.' marking. The fourth staff is a bass line. The fifth staff is empty. The music is written in a style typical of 19th-century manuscript notation.

