

VOLUNTARY 6

(Opus V.6 - 1748)

for trumpet & Organ

John Stanley (1712 - 1786)

Arr. Michel Rondeau

Score (04':30")

Adagio

Trumpet in C

Organ

Detailed description: This system shows the first five measures of the score. The Trumpet in C part is in a treble clef with a flat key signature and common time, containing five whole rests. The Organ part consists of two staves. The right-hand staff has a treble clef, a flat key signature, and common time, with notes starting on the second measure. The left-hand staff has a bass clef, a flat key signature, and common time, with notes starting on the first measure.

C Tpt.

Org.

Detailed description: This system shows measures 6-10. The C Trumpet part (treble clef, flat key signature, common time) has notes in measures 6-8 and rests in measures 9-10. The Organ part (two staves, treble and bass clefs, flat key signature, common time) continues with notes in measures 6-10.

C Tpt.

Org.

Detailed description: This system shows measures 11-15. The C Trumpet part (treble clef, flat key signature, common time) has notes in measures 11-14 and a rest in measure 15. The Organ part (two staves, treble and bass clefs, flat key signature, common time) continues with notes in measures 11-15.

16

C Tpt.

Org.

21

Allegro

C Tpt.

Org.

24

C Tpt.

Org.

C Tpt.

Org.

Measures 27-28 of the score. The C Tpt. part features a melodic line with eighth and sixteenth notes. The Organ part consists of two staves: the right staff has chords and moving lines, while the left staff has a bass line with some rests.

C Tpt.

Org.

Measures 29-30 of the score. The C Tpt. part continues with a melodic line. The Organ part shows more complex textures in both the right and left staves, including sixteenth-note patterns.

C Tpt.

Org.

Measures 31-32 of the score. The C Tpt. part includes a triplet of eighth notes in measure 31. The Organ part features a dense texture of sixteenth notes in the right hand and a steady bass line in the left hand.

C Tpt.

33

Org.

Detailed description: This system covers measures 33 and 34. The C Tpt. part begins with a quarter rest, followed by a quarter note G4 with a sharp sign, a quarter note A4 with a sharp sign, and a quarter note G4 with a sharp sign. The Organ part features a complex texture with sixteenth-note runs in the right hand and a bass line in the left hand.

C Tpt.

35

Org.

Detailed description: This system covers measures 35 and 36. The C Tpt. part has a sixteenth-note run in measure 35 followed by a quarter rest. The Organ part continues with intricate sixteenth-note patterns in the right hand and a steady bass line in the left hand. A trill (tr) is marked above a note in measure 36.

C Tpt.

38

Org.

Detailed description: This system covers measures 38 and 39. The C Tpt. part features a sixteenth-note run in measure 38 followed by a quarter note G4 with a flat sign. The Organ part continues with its characteristic sixteenth-note texture in both hands.

41

C Tpt.

Org.

Detailed description: This system covers measures 41 to 43. The C Tpt. part begins with a sixteenth-note triplet, followed by eighth notes and a quarter note. The Organ part features a complex texture with sixteenth-note runs in the right hand and a bass line in the left hand.

44

C Tpt.

Org.

Detailed description: This system covers measures 44 to 45. The C Tpt. part has a whole rest in measure 44 and then enters with a quarter note and eighth notes. The Organ part continues with sixteenth-note patterns in the right hand and a steady bass line in the left hand.

46

C Tpt.

Org.

Detailed description: This system covers measures 46 to 47. The C Tpt. part has a whole rest in measure 46 and then enters with a quarter note and eighth notes. The Organ part continues with sixteenth-note patterns in the right hand and a steady bass line in the left hand.

48

C Tpt.

Org.

Detailed description: This system covers measures 48 to 50. The C Tpt. part (top staff) begins with a whole rest in measure 48, followed by eighth notes in measures 49 and 50. The Organ part (middle and bottom staves) features a continuous eighth-note accompaniment in the right hand and a bass line with quarter notes and rests in the left hand.

51

C Tpt.

Org.

Detailed description: This system covers measures 51 to 52. The C Tpt. part (top staff) has eighth notes in measure 51 and quarter notes in measure 52. The Organ part (middle and bottom staves) continues with the eighth-note accompaniment and bass line.

53

C Tpt.

Org.

Detailed description: This system covers measures 53 to 54. The C Tpt. part (top staff) has quarter notes in measure 53, a whole rest in measure 54, and eighth notes in measure 55. The Organ part (middle and bottom staves) continues with the eighth-note accompaniment and bass line.

55

C Tpt.

Org.

Detailed description: This system covers measures 55 to 56. The C Tpt. part (top staff) begins with a whole rest, followed by a quarter note G4, a quarter note A4, a quarter note B4, a quarter note C5, a quarter note B4, a quarter note A4, and a whole rest. The Organ part (bottom two staves) features a continuous eighth-note accompaniment in the right hand and a simple bass line in the left hand.

57

C Tpt.

Org.

Detailed description: This system covers measures 57 to 58. The C Tpt. part (top staff) plays a quarter note G4, a quarter note A4, a quarter note B4, a quarter note C5, a quarter note B4, a quarter note A4, and a whole rest. The Organ part (bottom two staves) continues with the eighth-note accompaniment and bass line.

59

C Tpt.

Org.

Detailed description: This system covers measures 59 to 61. The C Tpt. part (top staff) plays a quarter note G4, a quarter note A4, a quarter note B4, a quarter note C5, a quarter note B4, a quarter note A4, a whole rest, a quarter note G4, and a whole rest. The Organ part (bottom two staves) continues with the eighth-note accompaniment and bass line, featuring a long note in the left hand in measure 60.

C Tpt.

62

Org.

62

tr

Detailed description: This system covers measures 62 to 64. The C Tpt. part begins with a melodic line in measure 62, followed by a rest in measure 63, and then a more active line in measure 64. The Organ part has a complex texture with multiple voices in both staves, including a trill in the right hand in measure 62.

C Tpt.

65

Org.

65

Detailed description: This system covers measures 65 to 67. The C Tpt. part has a rest in measure 65, followed by a melodic line in measure 66, and another rest in measure 67. The Organ part features a dense, rhythmic accompaniment in both staves, with a trill in the right hand in measure 65.

C Tpt.

68

Org.

68

Detailed description: This system covers measures 68 to 70. The C Tpt. part has a rest in measure 68, followed by a melodic line in measure 69, and another rest in measure 70. The Organ part continues with a dense, rhythmic accompaniment in both staves.

70

C Tpt.

Org.

Detailed description: This system covers measures 70-71. The C Tpt. part starts with a whole rest in measure 70, followed by a melodic line of eighth notes in measure 71. The Organ part features a continuous eighth-note accompaniment in the right hand and a bass line of quarter notes in the left hand.

72

C Tpt.

Org.

Detailed description: This system covers measures 72-73. The C Tpt. part plays a continuous eighth-note line in measure 72, followed by a melodic phrase in measure 73. The Organ part continues with the eighth-note accompaniment in the right hand and a bass line of quarter notes in the left hand.

74

C Tpt.

Org.

Detailed description: This system covers measures 74-75. The C Tpt. part has a whole rest in measure 74, followed by a melodic line in measure 75. The Organ part continues with the eighth-note accompaniment in the right hand and a bass line of quarter notes in the left hand.

C Tpt.

76

Org.

Detailed description: This system covers measures 76 to 77. The C Tpt. part begins with a whole rest in measure 76, followed by a quarter rest and a quarter note G#4 in measure 77. The Organ part features a continuous eighth-note melody in the right hand and a bass line of quarter notes in the left hand. The key signature has one flat (Bb) and the time signature is 3/4.

C Tpt.

78

Org.

Detailed description: This system covers measures 78 to 79. The C Tpt. part has a whole rest in measure 78, followed by a quarter rest and a quarter note G4 in measure 79. The Organ part continues with the eighth-note melody and bass line. The key signature has one flat (Bb) and the time signature is 3/4.

C Tpt.

80

Org.

Detailed description: This system covers measures 80 to 81. The C Tpt. part has a whole rest in measure 80, followed by a quarter rest and a quarter note G#4 in measure 81. The Organ part continues with the eighth-note melody and bass line. The key signature has one flat (Bb) and the time signature is 3/4.

82

C Tpt.

Org.

Detailed description: This system covers measures 82 to 83. The C Tpt. part begins with a melodic line of eighth notes: G4, A4, Bb4, C5, Bb4, A4, G4. It features a slur over the final two notes and a fermata over the final G4. The Organ part has a busy right hand with sixteenth-note patterns and a simple bass line of quarter notes: G3, F3, E3, D3.

84

C Tpt.

Org.

Detailed description: This system covers measures 84 to 85. The C Tpt. part continues with a melodic line: G4, A4, Bb4, C5, Bb4, A4, G4. It features a slur over the first two notes and a fermata over the final G4. The Organ part continues with similar sixteenth-note patterns in the right hand and quarter notes in the bass line: G3, F3, E3, D3.

86

C Tpt.

Org.

Detailed description: This system covers measures 86 to 87. The C Tpt. part continues with a melodic line: G4, A4, Bb4, C5, Bb4, A4, G4. It features a slur over the first two notes and a fermata over the final G4. The Organ part continues with similar sixteenth-note patterns in the right hand and quarter notes in the bass line: G3, F3, E3, D3.

88

C Tpt.

Org.

Detailed description: This system covers measures 88 to 91. The C Tpt. part begins with a whole rest in measure 88, followed by a quarter rest, then a quarter note G4, a quarter rest, and a quarter note F4 in measure 89. In measure 90, it has a quarter rest, a quarter note G4, a quarter note A4, a quarter note B4, and a quarter note C5. In measure 91, it has a quarter rest, a quarter note G4, a quarter note A4, a quarter note B4, and a quarter note C5. The Organ part has a busy texture in measure 88 with sixteenth-note runs in both hands. In measure 89, the right hand continues with sixteenth notes while the left hand has a whole note G3. In measure 90, the right hand has a sixteenth-note run and the left hand has a whole note G3. In measure 91, the right hand has a sixteenth-note run and the left hand has a whole note G3.

90

C Tpt.

Org.

Detailed description: This system covers measures 90 to 91. The C Tpt. part has a whole rest in measure 90, followed by a quarter rest, then a quarter note G4, a quarter note A4, a quarter note B4, and a quarter note C5 in measure 91. The Organ part continues with sixteenth-note runs in the right hand and whole notes in the left hand. In measure 90, the right hand has a sixteenth-note run and the left hand has a whole note G3. In measure 91, the right hand has a sixteenth-note run and the left hand has a whole note G3.

92

C Tpt.

Org.

Detailed description: This system covers measures 92 to 95. The C Tpt. part has a whole rest in measure 92, followed by a quarter rest, then a quarter note G4, a quarter note A4, a quarter note B4, and a quarter note C5 in measure 93. In measure 94, it has a whole note G4, a whole note A4, a whole note B4, and a whole note C5. In measure 95, it has a whole note G4, a whole note A4, a whole note B4, and a whole note C5. The Organ part continues with sixteenth-note runs in the right hand and whole notes in the left hand. In measure 92, the right hand has a sixteenth-note run and the left hand has a whole note G3. In measure 93, the right hand has a sixteenth-note run and the left hand has a whole note G3. In measure 94, the right hand has a sixteenth-note run and the left hand has a whole note G3. In measure 95, the right hand has a sixteenth-note run and the left hand has a whole note G3.

94

C Tpt.

Org.

Detailed description: This system covers measures 94 to 95. The C Tpt. part (top staff) begins with a whole rest in measure 94, followed by quarter notes G4, A4, Bb4, and A4 in measure 95. The Organ part (middle and bottom staves) features a complex texture. The right hand (treble clef) plays a series of eighth-note patterns with accidentals (sharps and naturals) and rests. The left hand (bass clef) provides a harmonic accompaniment with quarter notes and rests.

96

C Tpt.

Org.

Detailed description: This system covers measures 96 to 97. The C Tpt. part (top staff) has a whole rest in measure 96, followed by quarter notes G4, A4, Bb4, and A4 in measure 97. The Organ part (middle and bottom staves) continues with intricate eighth-note patterns in the right hand and a steady accompaniment in the left hand.

98

C Tpt.

Org.

Detailed description: This system covers measures 98 to 100. The C Tpt. part (top staff) starts with quarter notes G4, A4, Bb4, and A4 in measure 98, followed by quarter notes G4, A4, Bb4, and A4 in measure 99, and ends with a whole note G4 in measure 100. The Organ part (middle and bottom staves) concludes with a final cadence, featuring a whole note G4 in the right hand and a whole note G4 in the left hand in measure 100.

VOLUNTARY 6

(Opus V.6 - 1748)
for trumpet & Organ

John Stanley (1712 - 1786)
Arr. Michel Rondeau

Trumpet in C

Adagio 5 2

11 5

Allegro

21

25

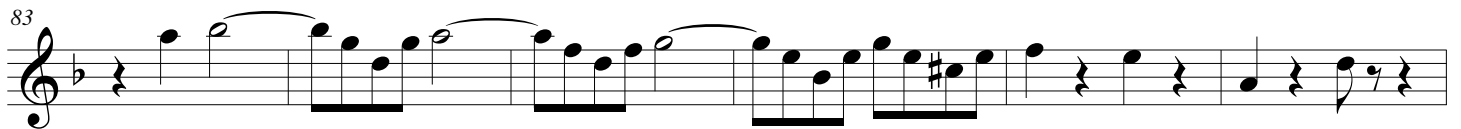
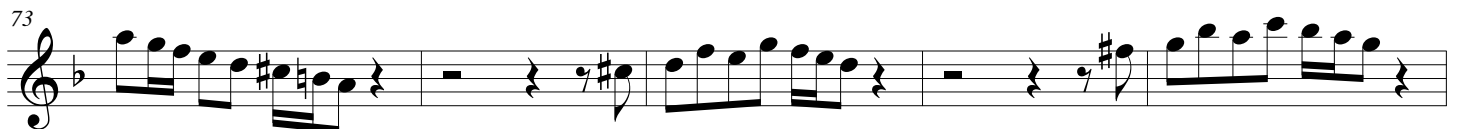
28 3

32 2

38

42

48



VOLUNTARY 6

(Opus V.6 - 1748)
for trumpet & Organ

John Stanley (1712 - 1786)
Arr. Michel Rondeau

Trumpet in Bb

Adagio

5

2

11

5

Allegro

21

25

28

3

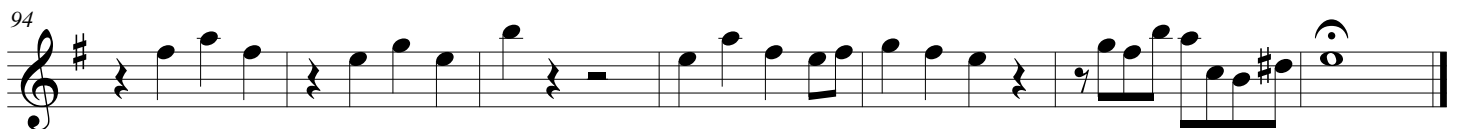
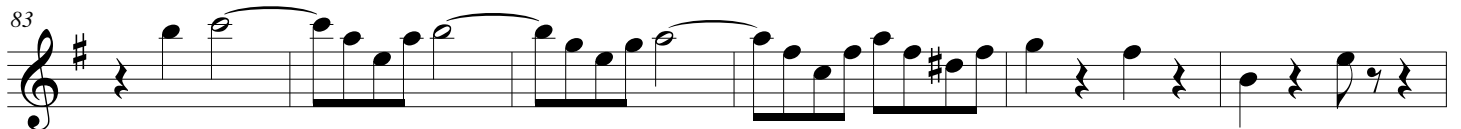
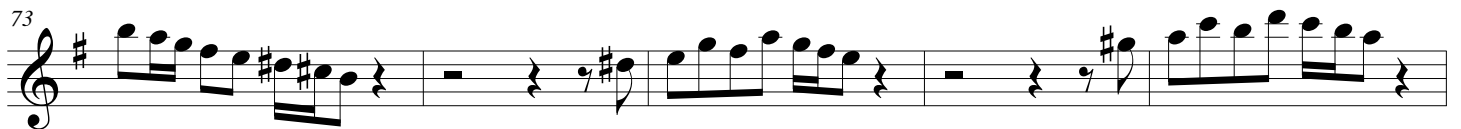
32

2

38

42

48



VOLUNTARY 6

(Opus V.6 - 1748)

for trumpet & Organ

Organ

John Stanley (1712 - 1786)

Arr. Michel Rondeau

Trumpet in C

Adagio

Organ

C Tpt.

Org.

C Tpt.

Org.

C Tpt.

16

Org.

Detailed description: This system covers measures 16 to 20. The C Tpt. part is mostly silent, with a final whole note chord in measure 20. The Organ part features a melodic line in the right hand and a bass line in the left hand. The right hand has a series of eighth notes and quarter notes, with some slurs and ties. The left hand has a similar rhythmic pattern with some rests.

C Tpt.

21

Org.

21

Allegro

Detailed description: This system covers measures 21 to 23. The tempo is marked 'Allegro'. The C Tpt. part has a melodic line with eighth notes and quarter notes, including some slurs and ties. The Organ part has a more complex texture with sixteenth notes and eighth notes in both hands, with some rests and slurs.

C Tpt.

24

Org.

24

Detailed description: This system covers measures 24 to 26. The C Tpt. part continues with a melodic line of eighth and quarter notes. The Organ part features a rhythmic accompaniment with sixteenth notes in the right hand and eighth notes in the left hand, with some rests and slurs.

Stanley - VOLUNTARY 6 - Organ

C Tpt.

Org.

Measures 27-28 of the score. The C Tpt. part features a melodic line with eighth and sixteenth notes. The Organ part consists of two staves: the right staff has chords and eighth-note patterns, while the left staff has a simple bass line with quarter and eighth notes.

C Tpt.

Org.

Measures 29-30 of the score. The C Tpt. part continues with a melodic line. The Organ part features more complex textures, with the right staff having dense sixteenth-note patterns and the left staff providing a steady bass accompaniment.

C Tpt.

Org.

Measures 31-32 of the score. The C Tpt. part includes a triplet of eighth notes in measure 31. The Organ part features a prominent sixteenth-note accompaniment in the right hand and a bass line in the left hand.

41

C Tpt.

Org.

Detailed description: This system covers measures 41 to 43. The C Tpt. part begins with a sixteenth-note triplet, followed by eighth notes and a quarter note. The Organ part features a treble clef with a sixteenth-note triplet and eighth notes, and a bass clef with eighth notes and a quarter note. The key signature has one flat, and the time signature is 3/4.

44

C Tpt.

Org.

Detailed description: This system covers measures 44 to 45. The C Tpt. part has a whole rest in measure 44 and then a quarter note with a sharp, followed by eighth notes. The Organ part has a treble clef with a sixteenth-note triplet and eighth notes, and a bass clef with quarter notes. The key signature has one flat, and the time signature is 3/4.

46

C Tpt.

Org.

Detailed description: This system covers measures 46 to 47. The C Tpt. part has a whole rest in measure 46 and then a quarter note with a sharp, followed by eighth notes. The Organ part has a treble clef with a sixteenth-note triplet and eighth notes, and a bass clef with quarter notes. The key signature has one flat, and the time signature is 3/4.

C Tpt.

48

Org.

Detailed description: This system covers measures 48 to 50. The C Tpt. part (top staff) begins with a whole rest in measure 48, followed by eighth notes in measure 49, and eighth notes with a slur in measure 50. The Organ part (middle and bottom staves) features a continuous eighth-note accompaniment in the right hand and a bass line of quarter notes in the left hand.

C Tpt.

51

Org.

Detailed description: This system covers measures 51 to 52. The C Tpt. part (top staff) has eighth notes in measure 51, a whole rest in measure 52, and eighth notes in measure 53. The Organ part (middle and bottom staves) continues with the eighth-note accompaniment in the right hand and quarter notes in the left hand.

C Tpt.

53

Org.

Detailed description: This system covers measures 53 to 54. The C Tpt. part (top staff) has eighth notes in measure 53, a whole rest in measure 54, and eighth notes in measure 55. The Organ part (middle and bottom staves) continues with the eighth-note accompaniment in the right hand and quarter notes in the left hand.

Stanley - VOLUNTARY 6 - Organ

55

C Tpt.

Org.

Detailed description: This system covers measures 55 to 56. The C Tpt. part (top staff) begins with a whole rest in measure 55, followed by a quarter note G4, a quarter note A4, a quarter note Bb4, and a quarter note A4 in measure 56. The Organ part (bottom two staves) features a continuous eighth-note accompaniment in the right hand and a simple bass line in the left hand. The right hand starts on G4 and moves up stepwise to A4, Bb4, and A4. The left hand starts on G3 and moves up stepwise to A3, Bb3, and A3.

57

C Tpt.

Org.

Detailed description: This system covers measures 57 to 58. The C Tpt. part (top staff) has a quarter note G4, a quarter note A4, a quarter note Bb4, and a quarter note A4 in measure 57. In measure 58, it has a whole rest, followed by a quarter note G4, a quarter note A4, and a quarter note Bb4. The Organ part (bottom two staves) continues with the eighth-note accompaniment in the right hand and the bass line in the left hand, maintaining the same rhythmic and melodic patterns as the previous system.

59

C Tpt.

Org.

Detailed description: This system covers measures 59 to 61. The C Tpt. part (top staff) has a quarter note G4, a quarter note A4, a quarter note Bb4, and a quarter note A4 in measure 59. In measure 60, it has a quarter note G4, a quarter note A4, and a quarter note Bb4. In measure 61, it has a whole rest, followed by a quarter note G4, a quarter note A4, and a quarter note Bb4. The Organ part (bottom two staves) continues with the eighth-note accompaniment in the right hand and the bass line in the left hand. In measure 61, the right hand has a melodic phrase with a slur over the notes G4, A4, Bb4, and A4.

C Tpt.

62

Org.

62

tr

Detailed description: This system covers measures 62 to 64. The C Tpt. part (top staff) begins at measure 62 with a melodic line: G4, A4, B4, C5, B4, A4, G4, F4, E4, D4. It has a rest in measure 63 and resumes at measure 64 with: G4, A4, B4, C5, B4, A4, G4, F4, E4, D4. The Organ part (bottom two staves) starts at measure 62 with a treble clef and a bass clef. The treble staff has a trill (tr) over the G4 note. The bass staff has a melodic line: G3, A3, B3, C4, B3, A3, G3, F3, E3, D3. Measure 63 shows a rest in the treble and a melodic line in the bass: G3, A3, B3, C4, B3, A3, G3, F3, E3, D3. Measure 64 continues with a melodic line in the treble: G4, A4, B4, C5, B4, A4, G4, F4, E4, D4 and a melodic line in the bass: G3, A3, B3, C4, B3, A3, G3, F3, E3, D3.

C Tpt.

65

Org.

65

Detailed description: This system covers measures 65 to 67. The C Tpt. part (top staff) has a rest in measure 65 and resumes at measure 66 with: G4, A4, B4, C5, B4, A4, G4, F4, E4, D4. It has a rest in measure 67. The Organ part (bottom two staves) starts at measure 65 with a treble clef and a bass clef. The treble staff has a melodic line: G4, A4, B4, C5, B4, A4, G4, F4, E4, D4. The bass staff has a melodic line: G3, A3, B3, C4, B3, A3, G3, F3, E3, D3. Measure 66 continues with a melodic line in the treble: G4, A4, B4, C5, B4, A4, G4, F4, E4, D4 and a melodic line in the bass: G3, A3, B3, C4, B3, A3, G3, F3, E3, D3. Measure 67 continues with a melodic line in the treble: G4, A4, B4, C5, B4, A4, G4, F4, E4, D4 and a melodic line in the bass: G3, A3, B3, C4, B3, A3, G3, F3, E3, D3.

C Tpt.

68

Org.

68

Detailed description: This system covers measures 68 to 70. The C Tpt. part (top staff) has a rest in measure 68 and resumes at measure 69 with: G4, A4, B4, C5, B4, A4, G4, F4, E4, D4. It has a rest in measure 70. The Organ part (bottom two staves) starts at measure 68 with a treble clef and a bass clef. The treble staff has a melodic line: G4, A4, B4, C5, B4, A4, G4, F4, E4, D4. The bass staff has a melodic line: G3, A3, B3, C4, B3, A3, G3, F3, E3, D3. Measure 69 continues with a melodic line in the treble: G4, A4, B4, C5, B4, A4, G4, F4, E4, D4 and a melodic line in the bass: G3, A3, B3, C4, B3, A3, G3, F3, E3, D3. Measure 70 continues with a melodic line in the treble: G4, A4, B4, C5, B4, A4, G4, F4, E4, D4 and a melodic line in the bass: G3, A3, B3, C4, B3, A3, G3, F3, E3, D3.

Stanley - VOLUNTARY 6 - Organ

C Tpt.

70

Org.

Detailed description: This system covers measures 70-71. The C Tpt. part (top staff) has a treble clef and a key signature of one flat. It begins with a whole rest in measure 70, followed by a melodic line of eighth notes: G4, A4, Bb4, C5, D5, E5, F5, G5. In measure 71, it continues with G5, F5, E5, D5, C5, Bb4, A4, G4. The Organ part (middle and bottom staves) has a grand staff. The right hand (treble clef) plays a continuous eighth-note accompaniment: G4, A4, Bb4, C5, D5, E5, F5, G5. The left hand (bass clef) plays a sparse accompaniment of quarter notes: G3, Bb3, G3, Bb3, G3, Bb3, G3, Bb3.

C Tpt.

72

Org.

Detailed description: This system covers measures 72-73. The C Tpt. part (top staff) has a treble clef and a key signature of one flat. It plays a continuous eighth-note line: G4, A4, Bb4, C5, D5, E5, F5, G5. In measure 73, it concludes with G5, F5, E5, D5, C5, Bb4, A4, G4. The Organ part (middle and bottom staves) has a grand staff. The right hand (treble clef) plays quarter notes: G4, A4, Bb4, C5, then a half note G5, followed by a quarter note F5, and a quarter note E5. The left hand (bass clef) plays quarter notes: G3, Bb3, G3, Bb3, G3, Bb3, G3, Bb3.

C Tpt.

74

Org.

Detailed description: This system covers measures 74-75. The C Tpt. part (top staff) has a treble clef and a key signature of one flat. It has a whole rest in measure 74, followed by a quarter note G4, a quarter note F5, and a quarter note E5. In measure 75, it plays a melodic line of eighth notes: G4, A4, Bb4, C5, D5, E5, F5, G5. The Organ part (middle and bottom staves) has a grand staff. The right hand (treble clef) plays a continuous eighth-note accompaniment: G4, A4, Bb4, C5, D5, E5, F5, G5. The left hand (bass clef) plays quarter notes: G3, Bb3, G3, Bb3, G3, Bb3, G3, Bb3.

C Tpt.

76

Org.

Detailed description: This system covers measures 76 to 77. The C Tpt. part begins with a whole rest in measure 76, followed by a quarter rest and a quarter note G4 with a sharp sign in measure 77. The Organ part features a complex texture: the right hand plays a continuous eighth-note pattern of G4, A4, B4, C5, while the left hand plays a simple bass line of G3, A3, B3, C4. Measure 78 begins with a repeat sign.

C Tpt.

78

Org.

Detailed description: This system covers measures 78 to 79. The C Tpt. part has a whole rest in measure 78, followed by a quarter rest and a quarter note G4 with a sharp sign in measure 79. The Organ part continues with the eighth-note pattern in the right hand and the bass line in the left hand. Measure 80 begins with a repeat sign.

C Tpt.

80

Org.

Detailed description: This system covers measures 80 to 81. The C Tpt. part has a whole rest in measure 80, followed by a quarter rest and a quarter note G4 with a sharp sign in measure 81. The Organ part continues with the eighth-note pattern in the right hand and the bass line in the left hand. Measure 82 begins with a repeat sign.

C Tpt.

82

Org.

Detailed description: This system covers measures 82-83. The C Tpt. part (top staff) begins with a melodic line: G4 (quarter), A4 (quarter), B4 (quarter), C5 (quarter), B4 (quarter), A4 (quarter), G4 (quarter), F4 (quarter), E4 (quarter), D4 (quarter), C4 (half). A slur covers the final two notes. The Organ part (middle and bottom staves) features a rhythmic accompaniment. The right hand (RH) plays a sequence of eighth notes: G4, A4, B4, C5, B4, A4, G4, F4, E4, D4, C4. The left hand (LH) plays a simple bass line: G3 (quarter), F3 (quarter), E3 (quarter), D3 (quarter), C3 (half).

C Tpt.

84

Org.

Detailed description: This system covers measures 84-85. The C Tpt. part (top staff) continues the melodic line: D4 (quarter), E4 (quarter), F4 (quarter), G4 (quarter), F4 (quarter), E4 (quarter), D4 (quarter), C4 (half). A slur covers the final two notes. The Organ part (middle and bottom staves) continues the accompaniment. The RH plays eighth notes: D4, E4, F4, G4, F4, E4, D4, C4, B3, A3, G3, F3, E3, D3, C3. The LH plays: D3 (quarter), C3 (quarter), B2 (quarter), A2 (quarter), G2 (half).

C Tpt.

86

Org.

Detailed description: This system covers measures 86-87. The C Tpt. part (top staff) continues the melodic line: E4 (quarter), F4 (quarter), G4 (quarter), F4 (quarter), E4 (quarter), D4 (quarter), C4 (half). A slur covers the final two notes. The Organ part (middle and bottom staves) continues the accompaniment. The RH plays eighth notes: E4, F4, G4, A4, G4, F4, E4, D4, C4, B3, A3, G3, F3, E3, D3, C3. The LH plays: E3 (quarter), D3 (quarter), C3 (quarter), B2 (quarter), A2 (quarter), G2 (half).

C Tpt.

88

Org.

C Tpt.

90

Org.

C Tpt.

92

Org.

94

C Tpt.

Org.

96

C Tpt.

Org.

98

C Tpt.

Org.