

Mus. Mus. 13746

Violoncelles

2

Christian Lindberg
Violoncelle

CONCERTO

pour Violoncelle & Orchestre

Op. 7

HENRI MARTEAU

Violoncelles

Concerto pour Violoncelle

Henri Marteau



tutti: 3 Flöte
Requies: 2 Flöte

I.

tutti (In einem Bogenstrich)
Sostenuto

Moderato

A musical staff in G major, 3/4 time, starting with a 'Moderato' tempo marking. It contains a series of notes: G4, A4, B4, C5, B4, A4, G4, F4, E4, D4, C4. A fermata is placed over the final C4 note.

5^p

Allegro Moderato

ff molto largo

A musical staff with a dynamic marking of *5^p*. It features a section marked 'Allegro Moderato' with notes G4, A4, B4, C5, B4, A4, G4, F4, E4, D4, C4. This is followed by a section marked 'ff molto largo' with notes G4, A4, B4, C5, B4, A4, G4, F4, E4, D4, C4.

A musical staff containing a series of notes: G4, A4, B4, C5, B4, A4, G4, F4, E4, D4, C4. A fermata is placed over the final C4 note.

p subito

A musical staff with a dynamic marking of *p subito*. It contains notes G4, A4, B4, C5, B4, A4, G4, F4, E4, D4, C4. The staff ends with a double bar line and a sharp sign.

Requies

10

9

A musical staff with a dynamic marking of *Requies*. It contains notes G4, A4, B4, C5, B4, A4, G4, F4, E4, D4, C4. The staff is divided into two sections by a double bar line, with '10' and '9' written above the notes in the second section.

Celli solo

Celli

A musical staff with a dynamic marking of *Celli solo*. It contains notes G4, A4, B4, C5, B4, A4, G4, F4, E4, D4, C4. The staff is divided into two sections by a double bar line, with 'Celli' written above the notes in the second section.

cresc:

poco rit

I

A musical staff with a dynamic marking of *cresc:* and a tempo marking of *poco rit*. It contains notes G4, A4, B4, C5, B4, A4, G4, F4, E4, D4, C4. The staff is divided into two sections by a double bar line, with 'I' written above the notes in the second section.

sempre

A musical staff with a dynamic marking of *sempre*. It contains notes G4, A4, B4, C5, B4, A4, G4, F4, E4, D4, C4. The staff is divided into two sections by a double bar line, with 'sempre' written above the notes in the second section.

rit
tutti
arco dimmato

A musical staff in G major with a treble clef. It contains several notes with accents and a fermata. A handwritten 'rit' is above the staff, and 'tutti' and 'arco dimmato' are written in a larger, decorative script. A double bar line is present.

dim:
arco marcato
Beleitung

A musical staff with notes and a fermata. A handwritten 'dim:' is written below the staff. 'arco marcato' and 'Beleitung' are written above the staff. A circled number '9' is at the end.

pizz
arco marcato

A musical staff with notes and triplets. A handwritten 'pizz' is written above the staff. 'arco marcato' is written above the staff.

pizz
f

A musical staff with notes and triplets. A handwritten 'pizz' is written above the staff. A dynamic marking 'f' is written below the staff.

arco
pizz
mp

A musical staff with notes and triplets. A circled number '5' is written above the staff. A handwritten 'arco' is written above the staff. 'pizz' and 'mp' are written below the staff.

A musical staff with notes and triplets. A dynamic marking 'mp' is written below the staff.

pizz
p

A musical staff with notes and triplets. A handwritten 'pizz' is written above the staff. A dynamic marking 'p' is written below the staff.

arco
pp

A musical staff with notes and triplets. A handwritten 'arco' is written above the staff. A dynamic marking 'pp' is written below the staff.

rit
f

A musical staff with notes and a fermata. A handwritten 'rit' is written above the staff. A dynamic marking 'f' is written below the staff.

Tutti

Musical staff with notes and dynamics: f , sf , ff . Includes a fermata.

arco animato

Musical staff with notes and dynamics: ff , ff .

Musical staff with notes, triplets, and dynamics: I , 3 , 3 , 3 , $al-lar_3$, $cresc:$.

Musical staff with notes, dynamics: $gan - do$, 7 , **Tempo**, $dim.$.

Musical staff with a heavily scribbled-out section and notes, dynamics: $dim.$.

Piano accompaniment staff with chords and dynamics: $(dim.)$, 8 , **Regleitung**.

Musical staff with notes, dynamics: **Cello solo**, $3/4$, $3/4$, tr , 10 , Mettez les Sourdines.

Musical staff with notes, dynamics: **Cello solo**, $cresc:$, **Celli**, p .

Cello Solo

Cello Solo

Tempo

ffto

Cello solo

Celli ben marcato

pizz

Sempre animato

poco rit

tti

f ff sf

I

al - - lar - - gan - - do - - -

ff

ff p

Cello solo

p poco rit. p

pp Cello solo pp

p Cello solo p

Cello I^o

16 Celli pizz

ma poco più largamente

Begleitung

Cello solo

Handwritten musical notation on a single staff. It begins with a treble clef and a key signature of one flat. The first measure is marked *pppi*. The notation includes eighth and sixteenth notes, some with slurs. A *trco* marking is present above a group of notes. The piece concludes with a double bar line and a *pppp* dynamic marking.

Two staves of handwritten musical notation. The upper staff contains several measures of music, some of which are heavily scribbled over with black ink. The lower staff continues the melody with notes and rests, marked with *pp* and *f* dynamics. A circled *(b)* is written above the second measure of the lower staff.

Two staves of handwritten musical notation. The upper staff features a series of notes with a *ppp* dynamic marking. The lower staff contains a *Tutti* marking above a measure with a double bar line, followed by a *f* dynamic marking. The piece ends with a triplet of notes.

Two staves of handwritten musical notation, likely for a piano accompaniment. The upper staff starts with a *dim:* marking and contains a triplet of notes. The lower staff has a *dim:* marking and a *pp* dynamic marking. The word *Begleitungs* is written in the right margin. The piece ends with a double bar line.

Two staves of handwritten musical notation. The upper staff contains several measures of music with *ppp* and *pp* dynamic markings. The lower staff has a *pp* dynamic marking and a double bar line. The word *Sonatina* is written in the right margin.

Two empty musical staves. A large, decorative flourish or signature is written across the bottom of the page, starting from the right side and curving upwards.

Cello solo

Celli

(div.)

rall

herwartetend

Tempo animato

Cello Solo

21

Celli pizzi

mf

arco Tutti

f

allargando

arco a poco

Respirando

22

p subito

Handwritten musical notation on a single staff, featuring a series of notes with a slur and a fermata. A circled '1' is written above the staff.

Handwritten musical notation on a single staff, featuring a series of notes with a slur and a fermata. A circled '1' is written above the staff. The word "cresc:" is written at the end of the staff. The word "belli" is written in the center of the staff.

Handwritten musical notation on a single staff, featuring a series of notes with a slur and a fermata. A circled '2' is written above the staff.

Handwritten musical notation on a single staff, featuring a series of notes with a slur and a fermata. The word "Tutti" is written on the left side of the staff. The dynamic marking "ff" is written below the staff.

Handwritten musical notation on a single staff, featuring a series of notes with a slur and a fermata. The dynamic marking "p" is written on the left side of the staff.

Handwritten musical notation on a single staff, featuring a series of notes with a slur and a fermata. The word "Punto" is written on the left side of the staff.

Handwritten musical notation on a single staff, featuring a series of notes with a slur and a fermata. The word "alte" is written above the staff. Roman numerals I, 3/4, and I are written above the notes.

Handwritten musical notation on a single staff, featuring a series of notes with a slur and a fermata. The word "Tutti" is written on the left side of the staff. The dynamic marking "largo mf" is written below the staff. The word "Steigerung" is written below the staff.

Handwritten musical notation on a single staff, featuring a series of notes with a slur and a fermata. The dynamic marking "con tutta forza" is written below the staff. A circled '2' is written below the staff. The dynamic marking "mf calmato" is written below the staff. The word "dim" is written below the staff.

Handwritten musical notation on a single staff, featuring a series of notes with a slur and a fermata. A circled '3' is written below the staff.

Handwritten musical notation on a single staff, featuring a series of notes with a slur and a fermata.

II.

(Sordines)

p
rit

ppp

Cello solo

rit -- poco a poco --

Cello

(Sordines)

ppp

con sordine

Vivo

molto largo

rit - poco

Collo solo
a poco e - dia -
Celli (Sordines)
p

3/4 // C // 3/4 // C // 3/4 //

Celli *espressivo*

5) *Megleitung*

p

arco

9 *più*
p

//

9 *I* *3/4* *gati fto*
senza sordini

Cello solo

3/4

Celli *drco* **Tutti** *cresc:*

f

f

3 **Tranquillo** **I** *delicato*

mf *et p*

p

3 Sordines. *pp*

10 *cresc:*

Cello solo *Tempo molto* **Tranquillo**

pp subito *ppp* **Celli** (Sordines.)

ppp

Andante
Cello solo
ppp
Celli

Cello solo
très retenu
Celli
Crescendo
p
ppp
Tempo

Otez les sourdines

p

9
3
3
1
2
3

3
3
3
3
3
3
3

Cello solo
I
Crescendo
p
ppp

Crescendo
2 pts 4 to

Cello Solo

Handwritten musical notation for the first system. The top staff is a Cello Solo part with a treble clef and a key signature of one flat. The bottom staff is a Tutti section with a bass clef. The word "Tutti" is written above the bottom staff. There are double bar lines with repeat slashes in the first and second measures of the top staff.

Handwritten musical notation for the second system. The top staff continues the Cello Solo part. The bottom staff has dynamic markings: "p subito" (piano subito), "poco a poco cresc" (poco a poco crescendo), and "f" (forte). There is a hairpin crescendo symbol spanning the measures.

Handwritten musical notation for the third system. The top staff has a "dim:" (diminuendo) marking. The bottom staff has a "pp" (pianissimo) marking. The word "Cello Solo" is written above the top staff in the final measure. There are double bar lines with repeat slashes in the first three measures of the top staff.

Handwritten musical notation for the fourth system. The top staff continues the Cello Solo part. The bottom staff has a "Celli pizzi" (Cello pizzicato) marking and a "ppp" (pianississimo) marking. There are double bar lines with repeat slashes in the first three measures of the top staff.

Four empty musical staves at the bottom of the page, consisting of four sets of five-line staves.

III.

Rondo. (Châmes écossais.)

Tutti

Allegro giocoso

$\frac{9}{8}$

sf

b

Musical staff with notes and dynamics. Includes a circled number 1 and a double bar line.

Musical staff with notes and dynamics. Includes a circled number 2 and a double bar line.

Musical staff with notes and dynamics. Includes a circled number 3 and a double bar line.

Cello solo

Celli pizzi

p

Musical staff with notes and dynamics. Includes a circled number 4 and a double bar line.

Arco

p

Musical staff with notes and dynamics. Includes a circled number 5 and a double bar line.

ppp

Musical staff with notes and dynamics. Includes a circled number 6 and a double bar line.

I

pizzi

pp

Musical staff with notes and dynamics. Includes a circled number 7 and a double bar line.

Cello solo

6

Celli *pizz*

ppp

pizz

pp

7 *arco*

f

8

ff

4

1st/2nd Solo

dim.

mf

mf

mf

mf

9 Celli

ppp

Cello solo

3

10

Celli

p

11

8

1^o Ob: Solo

Cello Solo

Musical score for 1^o Ob: Solo and Cello Solo. Measure 13 is circled with the number 13. The score shows a melodic line in the upper staff and a bass line in the lower staff. Dynamics include *mf* and *mf*. There is a double bar line in measure 13.

Celli

14 calando

Musical score for Cellos, measure 14. The score shows a melodic line with a *pp* dynamic. There is a double bar line in measure 14.

altos

Musical score for Altos. Measure 13 is circled with the number 13. The score shows a melodic line with a *mf* dynamic and a *rall:* marking. There is a double bar line in measure 13.

15

Celli

Tutti

Tempo 1^o

Musical score for Cellos, measure 15. The score shows a melodic line with a *sf* dynamic. There is a double bar line in measure 15.

altos pizi

Musical score for Altos, measure 16. The score shows a melodic line with a *mf* dynamic and a *crase:* marking. There is a double bar line in measure 16.

Celli

pizi

17

Musical score for Cellos, measure 17. The score shows a melodic line with a *pizi* marking. There is a double bar line in measure 17.

Mettez les Sourdines.

gati fto

Celli *pizz*
 (Sordines)
 C.B.

C.B.
 ppp
 Otez les Sordines.

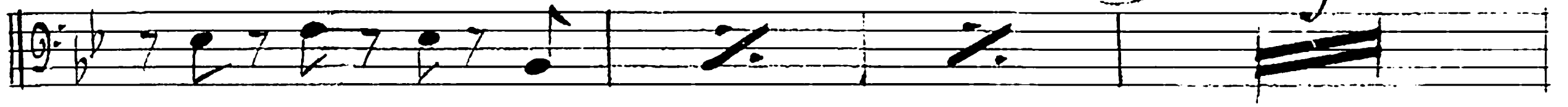
Cello solo
 Cello solo
 Celli *pizz*
 sf.

21) *arco tutti*
 f

23) *Allegretto Scherzando*

pizz
 p

7



Cello solo

Fin Lento

25




Celli sempre rit.

Moderato

26

f

I (div.)

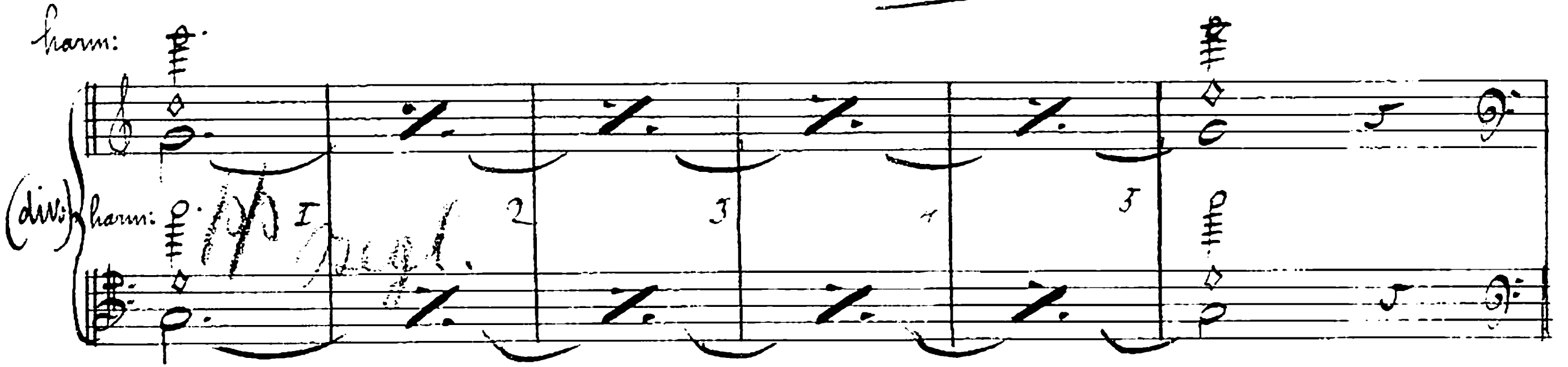


harm:

(div.) harm:

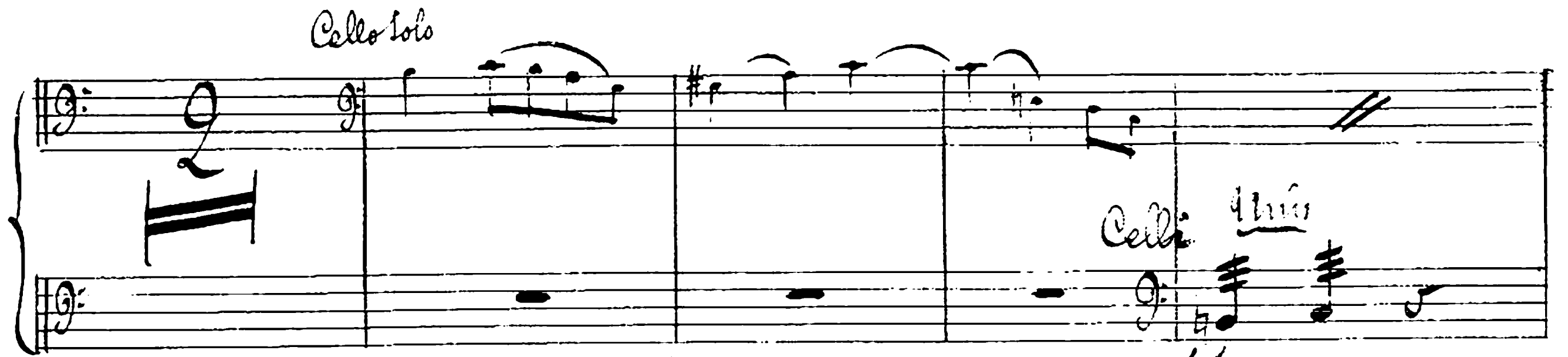
I

2 3 4 3



Cello solo

Celli: trio



27

(div.)



Cello solo

Tutti

Celli *animato*

Cello Solo

Tempo allegretto

ff

I: *V^{ma}* 2: *V^{ma}*

Celli

Tempo di Rondo

moderato

dim

mf

ppp

ppp

31

32 *Arco*

ppp

Handwritten musical notation on a single staff. It begins with a treble clef and a key signature of one sharp (F#). The notation includes several eighth and sixteenth notes, some beamed together. A circled number '33' is written above the staff. A dynamic marking 'p' is present. A first ending bracket labeled 'I' spans the final few notes.

Handwritten musical notation on a single staff. It starts with a treble clef and a key signature of one sharp. The notation features a mix of eighth and sixteenth notes. A circled number '34' is written above the staff. A dynamic marking 'p' is present. A first ending bracket labeled 'I' is at the end. A handwritten note 'Arco Tutti' is written above the staff.

Handwritten musical notation on a single staff. It begins with a treble clef and a key signature of one sharp. The notation consists of quarter and eighth notes. A dynamic marking 'p' is present.

Handwritten musical notation on a single staff. It starts with a treble clef and a key signature of one sharp. The notation includes quarter notes and a four-measure rest. A circled number '34' is written above the staff. A dynamic marking 'p' is present. A first ending bracket labeled 'I' is at the end.

Handwritten musical notation on a single staff. It begins with a treble clef and a key signature of one sharp. The notation features quarter notes and rests. A circled number '34' is written above the staff. A dynamic marking 'p' is present. A first ending bracket labeled 'I' is at the end. The word '(Sordines)' is written to the left of the staff. The word 'Mourful' is written above the staff. The word 'Tranquillo' is written above the staff. A dynamic marking 'ppp' is present.

Handwritten musical notation on a single staff. It consists of a series of quarter notes, all beamed together.

Handwritten musical notation on a single staff. It consists of a series of quarter notes, all beamed together.

Handwritten musical notation on a grand staff (treble and bass clefs). The notation includes quarter notes and rests. A circled number '35' is written above the staff. A dynamic marking 'p' is present. A first ending bracket labeled 'I' is at the end.

Handwritten musical notation on a grand staff. It features a large, sweeping curve that spans across the staffs, possibly representing a bow stroke or a specific performance technique. The word 'p' is written above the curve.

0.3.

Cello solo

Celli

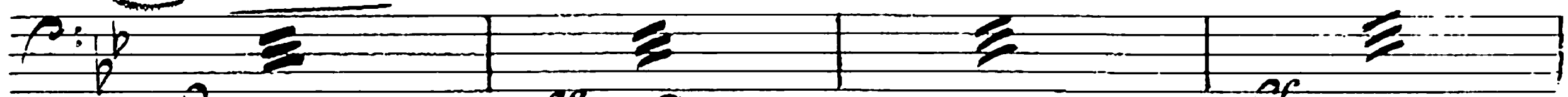
Cellosolo

0.3.

cresc:

38

arco



ff

ff

p

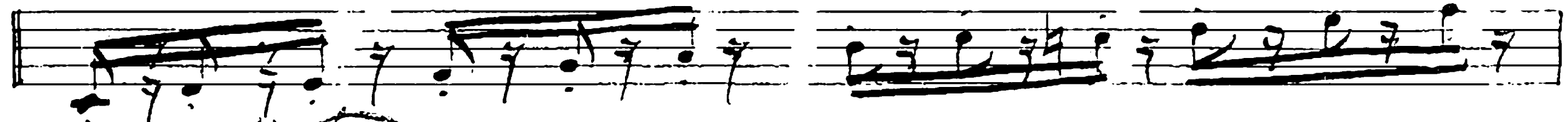
ff

6

6

6

6



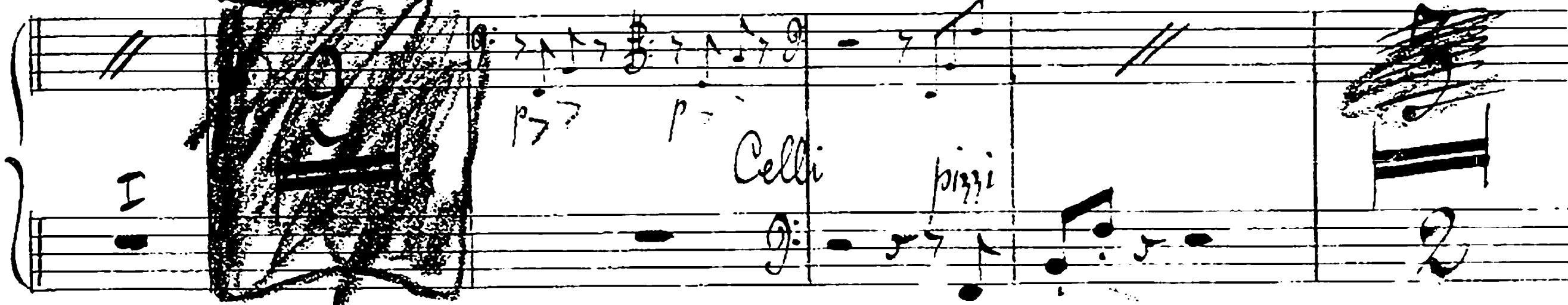
39

Andante

A.B.

det.

A.B. pizz.



I

p

p

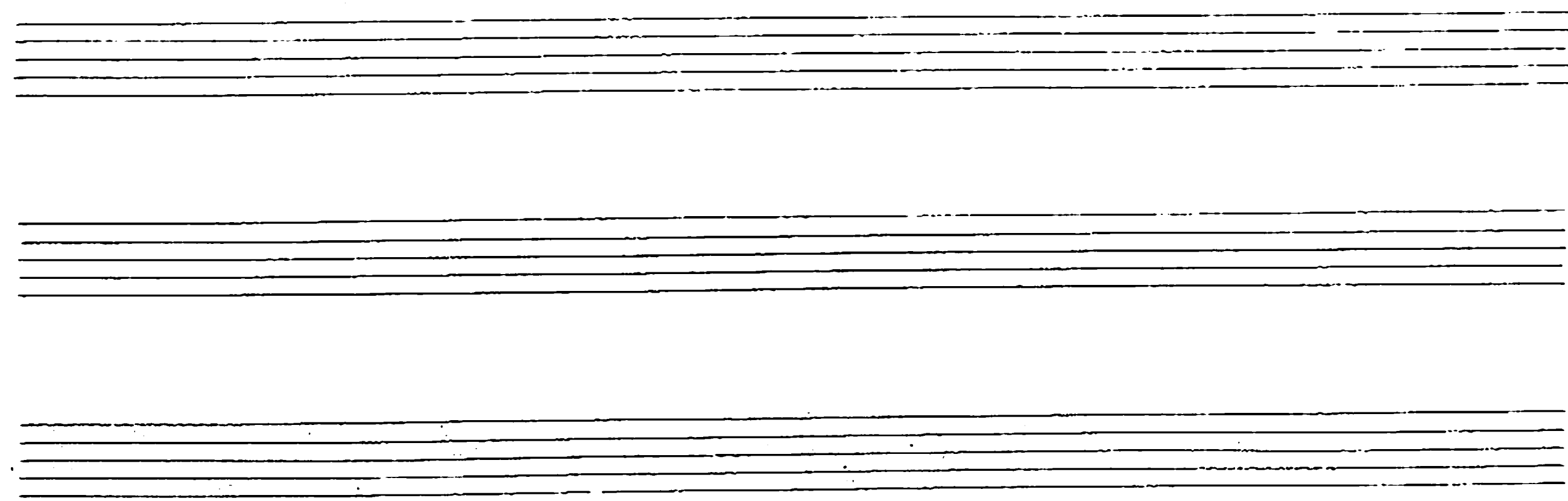
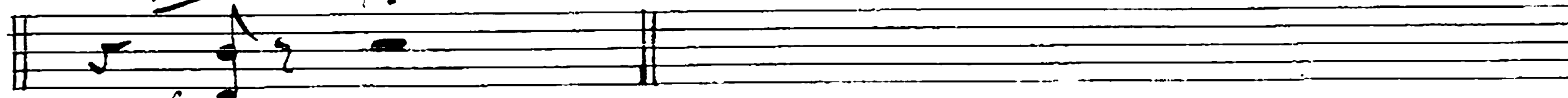
Celli

pizz.

2

Arco

ff



Blank musical staff

Blank musical staff

Blank musical staff

Blank musical staff

Blank musical staff

Blank musical staff

Blank musical staff

Blank musical staff

Blank musical staff

Blank musical staff

Blank musical staff

