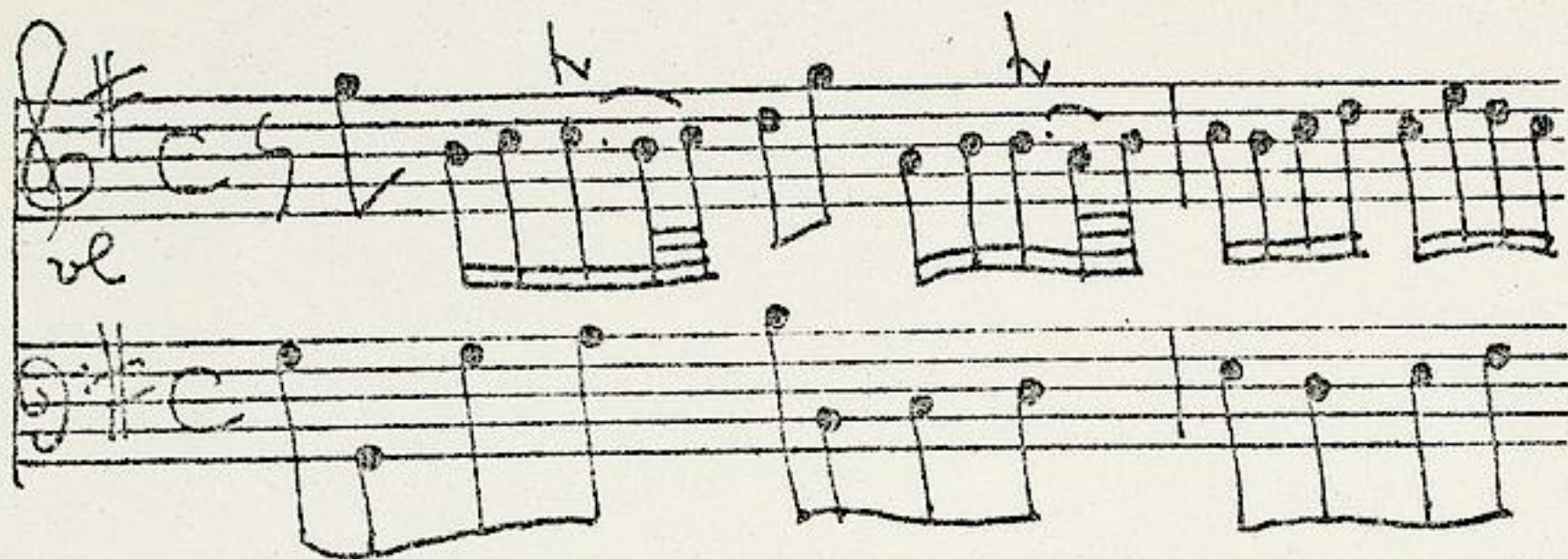


Fasch, Johann Friedrich (1688-1758)

BRD DS Mus.ms 297/1

Sonata. Del Sign: Fasch. / [Stimmbez.:] Flute Travers. / Violino /  
Cembalo / (G-dur) [Kopftitel]



Affettuoso C G-dur - Al-  
legro C G-dur - Largo  
3/4 e-moll - Allegro  
3/8 G-dur.

Ms. ca. 1740.

35 x 22 cm.

WZ: Narrenkappe

partitur: 2 Bl.

Alte Sign.: Stempel: L mit Krone. 3867.

Schreiber: J.S. Endler oder Grünwald.

Stimmen vgl. Mus.ms 298/5.



3867

3867

Sonaten.  
in  
Partitur  
von  
F. Fusch.

Fol. (27) W. in 3 fasc.

Großherzoglich  
Hessische  
Hofbibliothek.

fol. (27)



Sonata.

Mus 297

fol. 12

Del Sign. Fasch.

*Affettuoso.*

Flute Travers. *Affettuoso.*

Violino *Affettuoso.*

Cembalo *Affettuoso.*

*Affettuoso.*

*Allegro.*





*Largo.*



Großherzoglich  
Ressische  
Hofbibliothek.



*Allegro*

This image shows a page of handwritten musical notation on aged, yellowed paper. The page is filled with five systems of musical staves. Each system consists of three staves, likely representing different instruments or voices. The notation is written in black ink and includes various musical symbols such as notes, rests, beams, and clefs. The word "Allegro" is written in a cursive hand at the top left of the page. The paper shows signs of age, including some staining and irregular edges.





