

Concerto in D (308)

for Trumpet & Strings

Cello

Christoph Graupner (1683 - 1760)

Arr. Michel Rondeau

1. Largo e giusto ♩ = 120

Musical score for the first movement, 'Largo e giusto', in D major, common time. The score consists of five staves of music. The first staff begins with a dynamic marking of *f* and includes markings for *p* and *f*. The second staff starts at measure 6. The third staff starts at measure 11 and includes markings for *p* and *f*. The fourth staff starts at measure 16 and includes markings for *dim.* and *p*. The movement concludes with a double bar line and a 2/4 time signature change.

2. Allegro

Musical score for the second movement, 'Allegro', in D major, 2/4 time. The score consists of seven staves of music. The first staff begins with a dynamic marking of *f* and includes markings for *p* and *f*. The second staff starts at measure 29 and includes markings for *p*, *f*, *mf*, and *cresc.*. The third staff starts at measure 38 and includes markings for *f* and *p*. The fourth staff starts at measure 47 and includes a marking for *p*. The fifth staff starts at measure 60 and includes a marking for *f*. The sixth staff starts at measure 69 and includes a marking for *f*. The movement concludes with a double bar line.

79



89



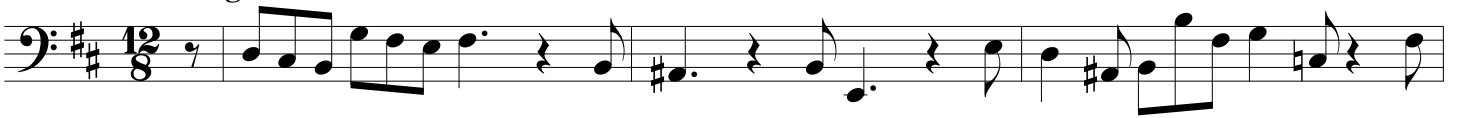
98



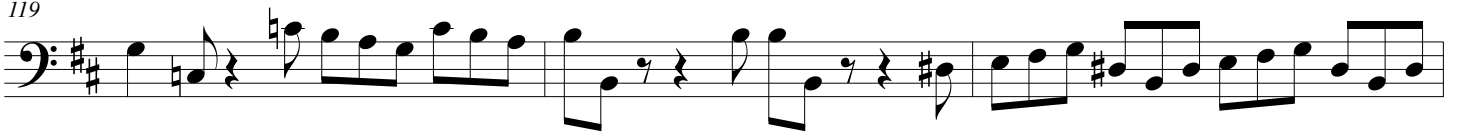
108



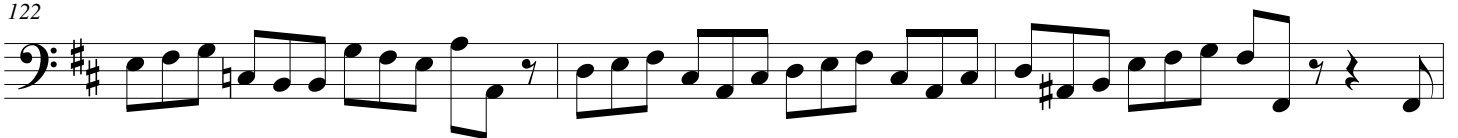
3. Largo



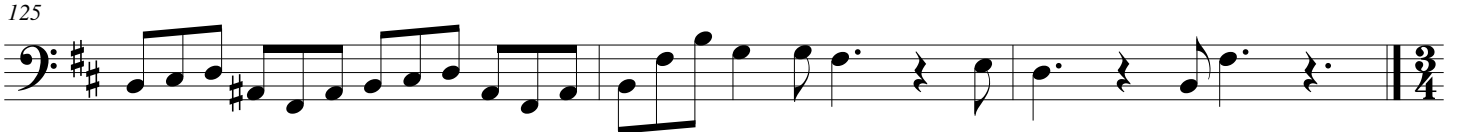
119



122

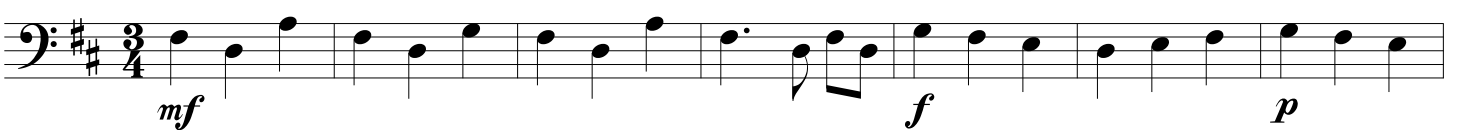


125



128

4. Allegro



135



143

f *p* *f*

2 3

Detailed description: This system contains measures 143 to 152. It begins with a forte (*f*) dynamic. Measures 144 and 145 feature a double bar line with a '2' above it, indicating a second ending. Measures 146 and 147 feature a double bar line with a '3' above it, indicating a triplet. The dynamic shifts to piano (*p*) in measure 148 and returns to forte (*f*) in measure 150.

153

p *mf*

Detailed description: This system contains measures 153 to 160. The dynamic starts at piano (*p*) and moves to mezzo-forte (*mf*) in measure 156. The music consists of eighth and sixteenth notes.

161

f

Detailed description: This system contains measures 161 to 168. The dynamic is forte (*f*). The music features a mix of eighth and sixteenth notes.

169

p *mf* *p*

3 2

Detailed description: This system contains measures 169 to 178. The dynamic starts at piano (*p*), moves to mezzo-forte (*mf*) in measure 172, and returns to piano (*p*) in measure 174. Measures 172 and 173 feature a triplet (marked '3'), and measures 176 and 177 feature a second ending (marked '2').

179

mf Fine

Detailed description: This system contains measures 179 to 186. The dynamic is mezzo-forte (*mf*). Measure 180 has a fermata over a half note. The system ends with a double bar line and the word 'Fine'. There are two whole notes with a sharp sign (#) in the final two measures.

187

Detailed description: This system contains measures 187 to 194. The music consists of eighth and sixteenth notes.

195

Detailed description: This system contains measures 195 to 201. The music consists of eighth and sixteenth notes.

202

Detailed description: This system contains measures 202 to 209. The music consists of eighth and sixteenth notes.

210

Detailed description: This system contains measures 210 to 217. The music consists of eighth and sixteenth notes.

218

Detailed description: This system contains measures 218 to 222. The music consists of eighth and sixteenth notes.

223

Detailed description: This system contains measures 223 to 229. The music consists of eighth and sixteenth notes, ending with a double bar line.

Da Capo al Fine