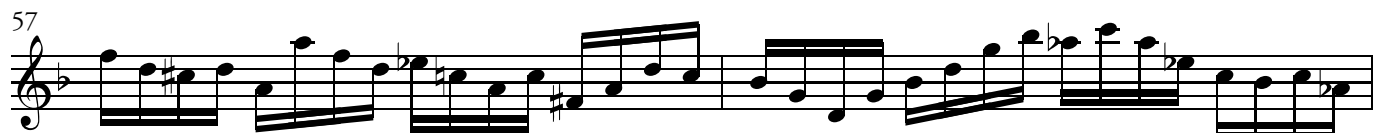


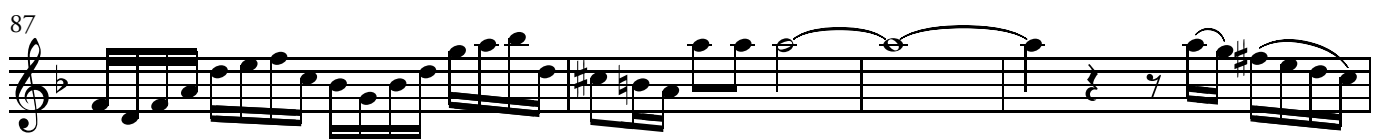
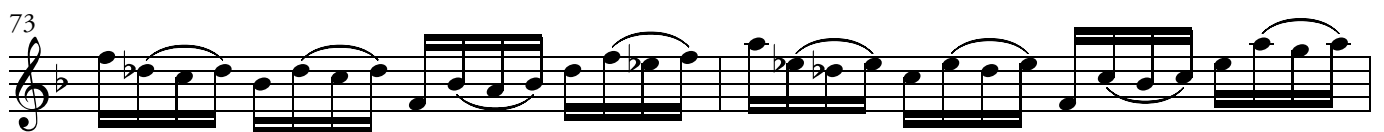
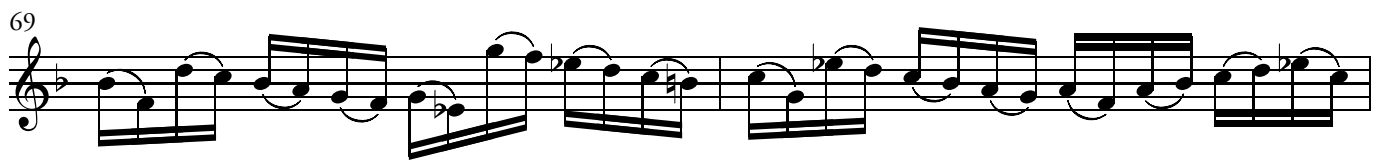
Oboe concert.

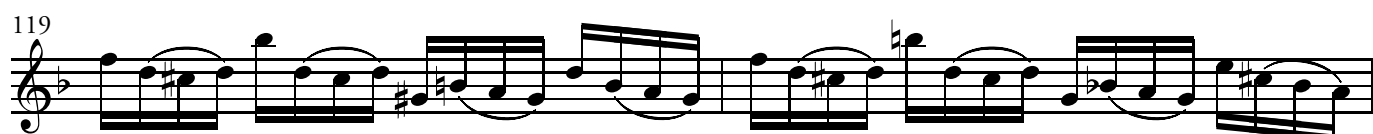
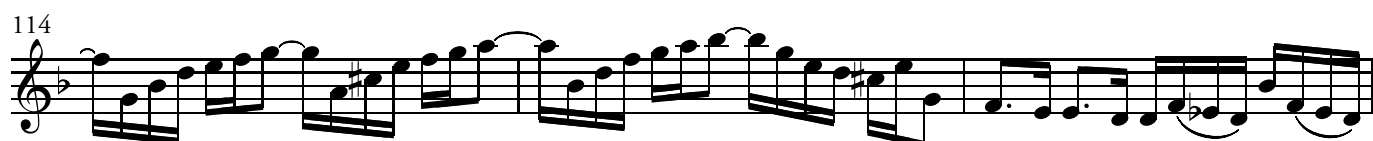
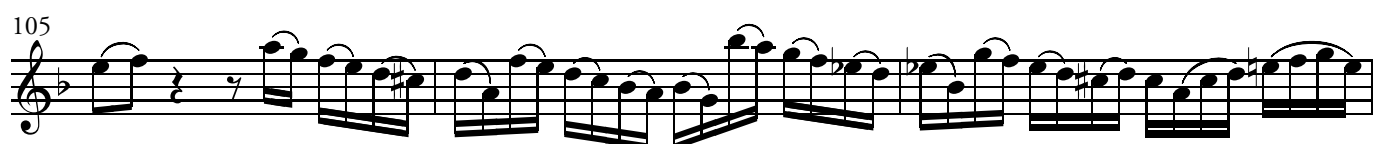
Concerto BWV 1059

J.S.Bach

Musical score for Oboe Concerto BWV 1059 by J.S. Bach, measures 7-35. The score is written in treble clef with a key signature of one flat (B-flat) and a common time signature (C). The music features a variety of rhythmic patterns, including eighth and sixteenth notes, and rests. Measure 8 contains a fermata. Measure 32 includes a trill (tr) over a note. The score is presented on ten staves, with measure numbers 7, 11, 15, 17, 19, 21, 25, 28, 30, 32, and 35 indicated at the beginning of their respective staves.







Adagio

Musical score for the Adagio section, measures 1 through 17. The music is written in treble clef with a key signature of one flat (B-flat) and a common time signature (C). The tempo is marked Adagio. The score includes various rhythmic patterns, including eighth and sixteenth notes, and rests. A trill (tr) is indicated above the first measure. Measures 11, 14, and 17 contain triplets of eighth notes. The piece concludes with a fermata over the final note of measure 17.

Presto

Musical score for the Presto section, measures 1 through 29. The music is written in treble clef with a key signature of one flat (B-flat) and a 3/8 time signature. The tempo is marked Presto. The score features rapid sixteenth-note passages and trills (tr). A piano (p) dynamic marking is present in measure 8. The piece concludes with a fermata over the final note of measure 29.

