

Instrument
Bassus II

Missa octo vocum

Nürnberg 1599

Hans Leo Haßler
(1564 – 1612)

Kyrie

Kyrie eleison I

7 10 2 14

Ky - ri - e e - lei - son, Ky - rie e - lei - son, Ky - ri - e e - lei - son.

15 18

lei - son, Ky - ri - e e - lei - son, Ky - ri - e e - lei - son.

Christe eleison *Quatuor vocum (Chorus secundus tacet)*

23 26

Kyrie eleison II

47 8 58

Ky - ri - e e - lei - son, Ky - ri - e e - lei - son,

61 64

lei - son, Ky - rie e - lei - son, Ky - rie e - lei - son, Ky -

68 71

rie e - lei - son, Ky - ri - e e - lei - son, Ky - ri - e e - lei -

75 78

son, Ky - ri - e e - lei - son, Ky - rie e - lei - son, Ky - rie e - lei - son,

82

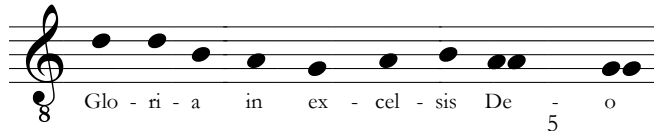
e - lei - son.

Gegenüber dem Originaldruck des Stimmbuchs (hohe Chiavette) um eine Quarte tiefer transponiert. Bindebögen kennzeichnen Ligaturen des Originaldrucks, Textergänzungen bzw. -vereinheitlichungen wurden ohne Kennzeichnung aus der Ausgabe in den „Denkmälern der deutschen Tonkunst“, Folge 1, Bd. 7 (Leipzig 1902) übernommen.

Wegen der Höhe des damaligen Stimmtones ist die Messe mindestens einen Halbton, besser einen Ganzton über dem heutigen Stimmtone (a¹ = 440 Hz) aufzuführen.

© 2012 by Kurt Pages
Stand: 22. Juli 2012

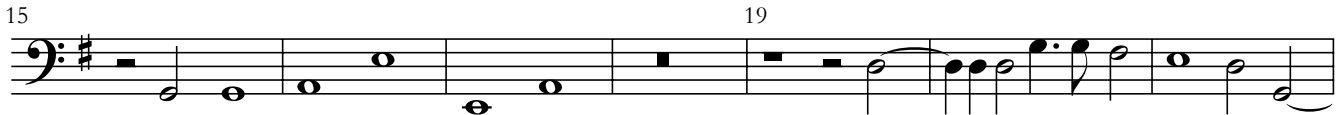
Gloria



Et in ter - ra pax ho - mi - ni - bus bo - nae vo - lun - ta - tis. Lau - da - mus



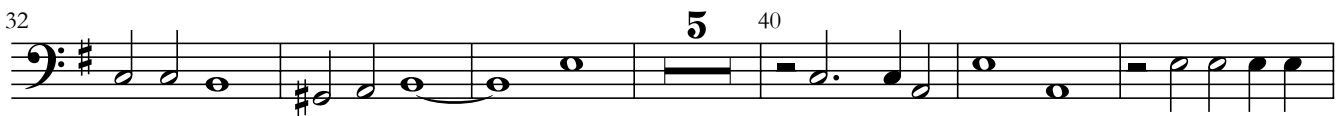
te, lau - da - mus te. Be - ne - di - ci - mus te. Ad - o - ra - mus te.



Glo - ri - fi - ca - mus te. Gra - ti - as a - gi - mus ti - bi pro -



- pter ma - gnam glo - ri - am tu - am. Do - mi - ne Fi - li - u - ni -



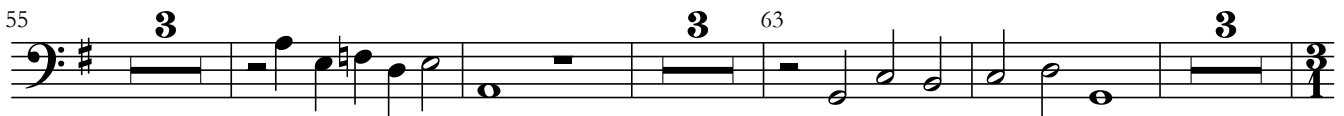
ge - ni - te Je - su - Chri - ste. Fi - li - us Pa - tris. Qui tol - lis pec -



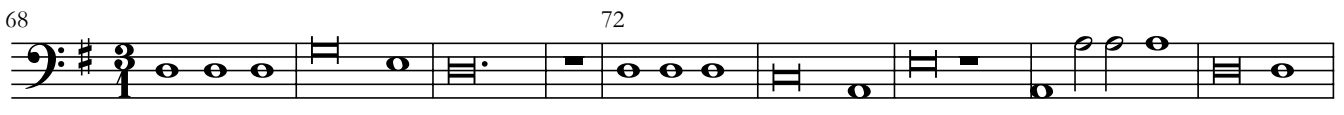
ca - ta mun - di, mi - se - re - re no - bis, mi - se - re - re no - bis, mi - se - re - re no - bis.



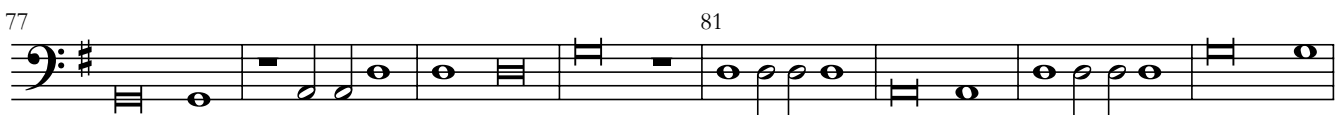
Qui tol - lis pec - ca - ta mun - di, su - sci - pe de - pre - ca - ti - o - nem no - stram. Qui se - des,



mi - se - re - re no - bis, Tu so - lus Do - mi - nus.



Cum san - cto Spi - ri - tu, cum san - cto Spi - ri - tu, in glo - ri - a De - i



Pa - tris. De - i Pa - tris. A - men, in glo - ri - a De - i, in glo - ri - a De - i



Pa - tris. A - men, A - men.

Credo

Et incarnatus est

Crucifixus *Quatuor vocum (Chorus secundus tacet)*

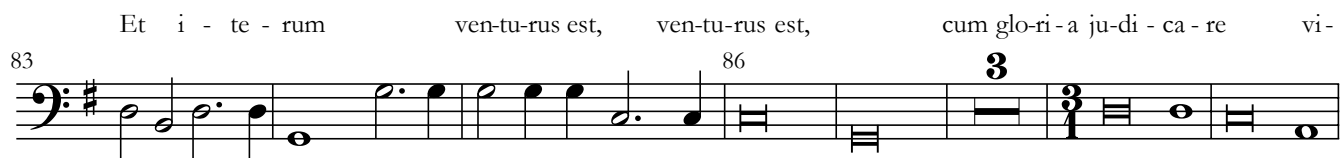
Et iterum venturus est

76 80



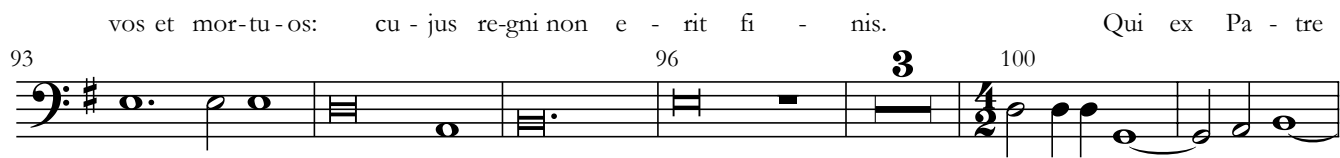
Et i - te - rum ven-tu-rus est, ven-tu-rus est, cum glo-ri-a ju-di-ca-re vi-

83 86 3



vos et mor-tu-os: cu - jus re-gni non e - rit fi - nis. Qui ex Pa - tre

93 96 3 100



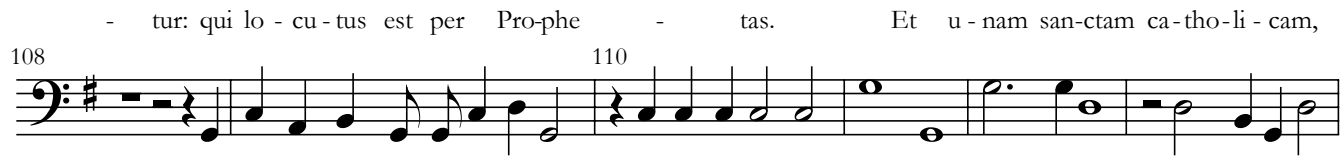
Fi - li - o - que pro - ce - dit. Et coglori - fi - ca -

102 106



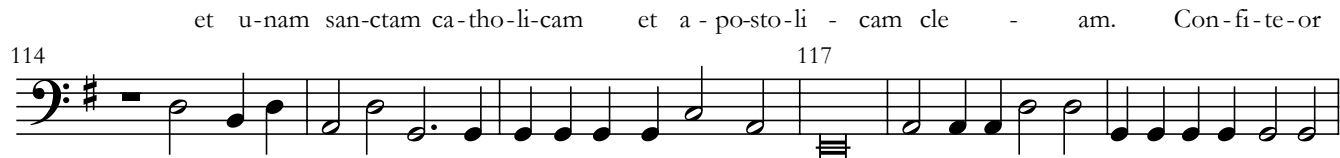
- tur: qui lo - cu - tus est per Pro - phe - tas. Et u - nam san-ctam ca - tho - li - cam,

108 110



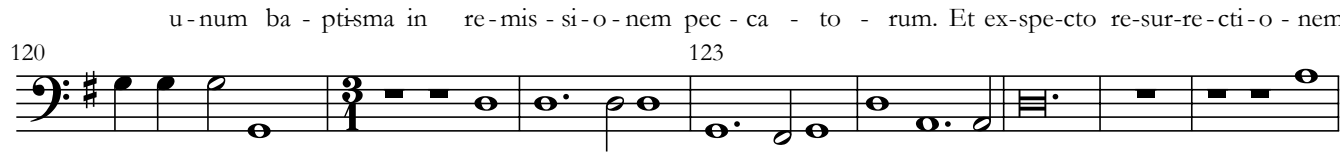
et u - nam san - ctam ca - tho - li - cam et a - po - sto - li - cam cle - am. Con - fi - te - or

114 117



u - num ba - ptisma in re - mis - si - o - nem pec - ca - to - rum. Et ex - spe - cto re - sur - re - cti - o - nem

120 123



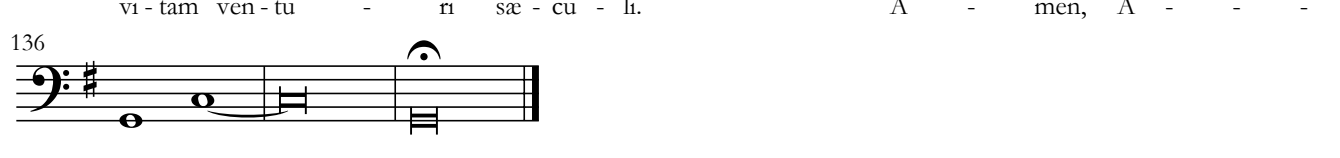
mor - tu - o - rum. Et vi - tam ven - tu - ri sæ - cu - li, et

128 134 2



vi - tam ven - tu - ri sæ - cu - li. A - men, A - - -

136



men, A - - - men.

Sanctus

7 10
San - - - ctus, san - ctus Do - mi - nus De - us Sa - ba - oth. Ple - ni

14 17
sunt cœ - li et ter - ra glo - ri - a tu - a, ple - ni

21 24 3
sunt cœ - li et ter - ra glo - ri - a tu - a.

30 33
Ho - san - na in ex - cel - sis, ho - san - na in ex - cel -

37 40
sis. Be - ne - di - ctus qui ve - nit in no - mi - ne,

45 48
in no - mi - ne Do - mi - ni, in no - mi - ne Do - mi - ni.

52 54 3 59
Ho - san - na in ex - cel - sis, ho - san - na in ex - cel - sis,

63 66
ho - san - na in ex - cel - sis, ho - san - na in ex - cel - sis.

Agnus Dei

7 10

A - gnus De - i, qui tol - lis pec - ca - ta mun - di: mi -

14 17

- se - re - re no - bis, mi - se - re - re no - bis.

21 24

A - gnus De - i, qui tol - lis pec - ca - ta mun - di, A -

28 32

- gnus De - i, qui tol - lis pec - ca - ta mun - di: do - na no - bis pa - cem,

36 39

do - na no - bis pa - cem, do - na no - bis pa - cem, do - na no - bis pa -

43 46

- - cem, do - na no - bis pa - - - - - cem, do - na no - bis pa -

50

- cem, pa - cem.