

Violin II

Deborah

Daniel Léo Simpson
December 12, 1972
Tucson, Arizona USA

Moderato $\text{♩} = 112$ rit. . . a tempo rit. . . . a tempo

3 7

15

f *cresc.* *ff*

meno mosso $\text{♩} = 112$

6 4 sord. 35

mp cresc. *mf dim.*

2 4 senza sord.

p *mp* *p* *mp cresc.* *mp cresc.*

mf

mf *mf*

Violin II

cresc. a tempo ♩=112

rit. *f*

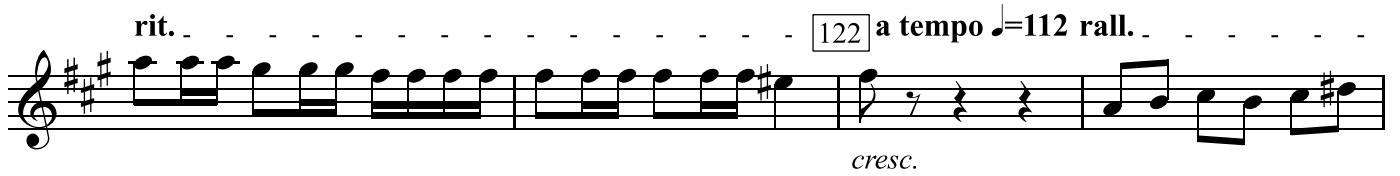
lo stesso tempo ♩=112

81 *f*

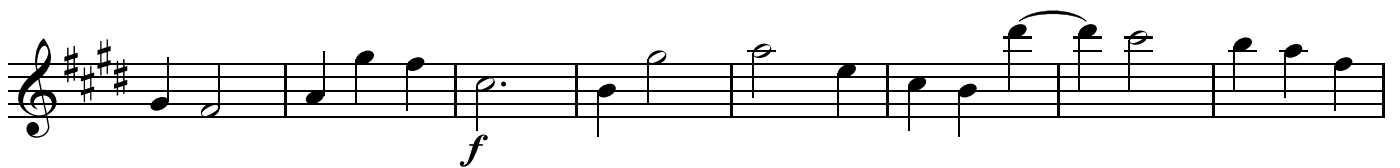
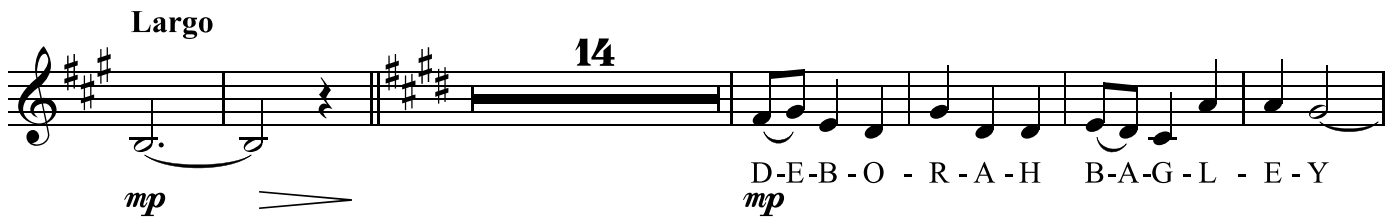
90

98 [div.] *cresc.* *più forte*

[div.] 98 *f*



Andante ♩=96 *ff*



Violin II

poco meno mosso ♩=96 rit. a tempo ♩=96 ⁴ poco rit. .

mp a tempo ♩=96 *dim.* *p* poco rit.

f Tempo I ♩=112

a tempo ♩=96 ² ² [215] pizz. *mp*

rit.

cresc. *mf*

Lo stesso tempo ♩=112

mp rit. a tempo ♩=112 pizz.

poco rit. a tempo ♩=112 arco

f

263

rit.

a tempo ♩=112

ff

poco rit.

3

285 a tempo ♩=112

f

2

Allegro ♩=126

8

f

mp

cresc.

308

f

poco rit.

324 a tempo ♩=126

mp *mp*

cresc.

f

f

rit.

poco rit. // *ff*

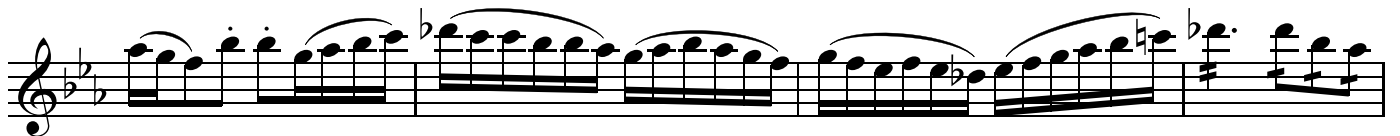
mp **Fragde**

D-E-B-O-R-A-H B-A-G-L-E-Y

mp



D-E-B-O-R-A-H B-A-G-L-E-Y
mp

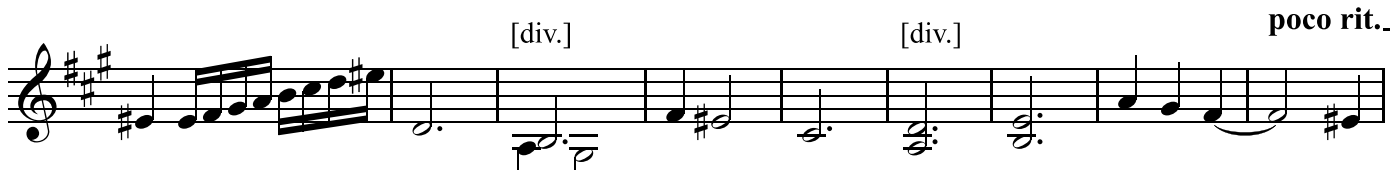
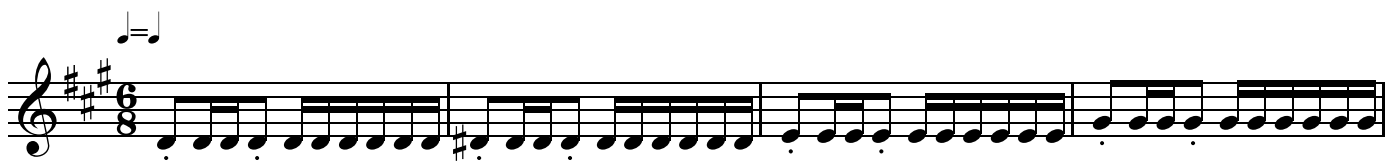


This musical score for Violin II consists of ten staves of music. The key signature is B-flat major (two flats). The first four staves contain measures 445-458, featuring a complex rhythmic pattern of eighth and sixteenth notes with various dynamics including *mf* and *pizz.* (pizzicato). The fifth staff (measures 459-462) is marked *arco* and *cresc.* (crescendo), with a box containing the number 459 above the first measure. The sixth staff (measures 463-466) continues the *arco* section, marked *f* (forte) and *mp* (mezzo-piano), with a box containing the number 4 above the first measure. The seventh staff (measures 467-470) is marked *f*. The eighth staff (measures 471-474) is marked *rit.* (ritardando). The ninth staff (measures 475-478) is marked *cresc.* and ends with a double bar line. The tenth staff (measures 479-480) is marked *ff* (fortissimo) and begins with a box containing the number 480. The tempo marking *più mosso* and a metronome marking of 126 are placed above the first measure of this staff. The time signature changes from 4/4 to 3/4 at the beginning of the final staff.

rit.



496 **meno mosso** ♩=112



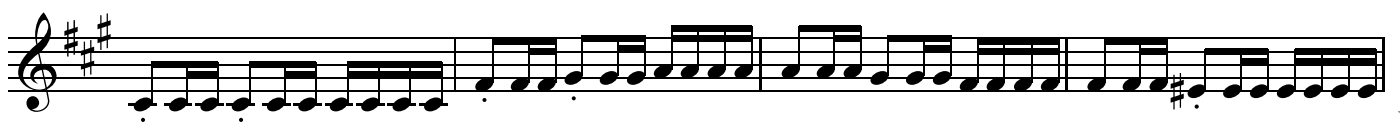
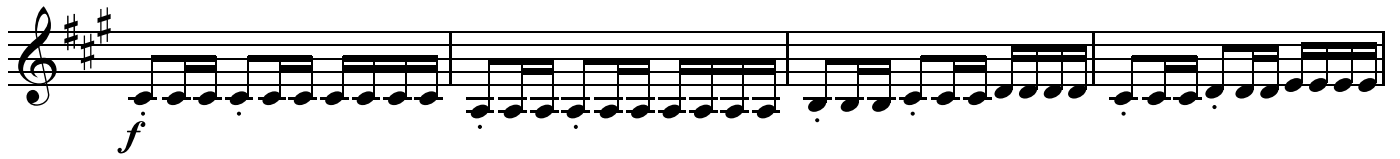
a tempo ♩=112

[div.]

[div.]

cresc.

più forte



a tempo ♩=112 rall.

f *cresc.* *ff* *mp*

554 Andante ♩=80

mf

Maestoso

564

f

571

rit.

579

Largando

cresc. *ff*

cresc. *fff*