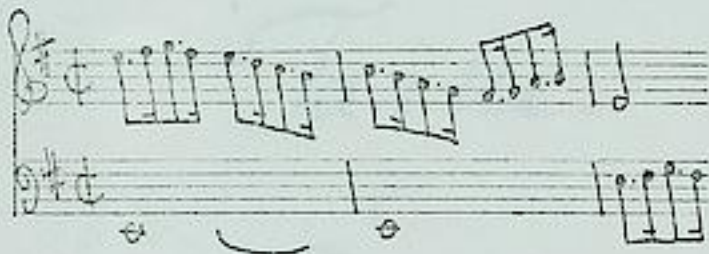


Telemann, Georg Philipp (1681-1767)

BRD DS Mus.ms 1034/62

Ouverture. / á 2 Violons. / Taille. / c/Basse. / Par Mons: / Telemann. /
[Incipit] / (e-moll)



8 Sätze.
vgl. Hoffmann.

Ms. 1. H. 18. Jh. (J. S. Endler). 35,5 x 22 cm.

4 St.: vl 1, 2, vla, cembalo (unbez.). 2, 2, 1, 2 Bl.

Alte Sign.: 3360.

In den Violinen einzelne Stellen in der Ouverture mit Hautb. bezeichnet.

Hoffmann, e 6.

Spartierung (Msc.) von Friedrich Noack = Mus.ms. 1731,
S. 27-30 (Aria 3 unvollst., Aria 4-6 fehlen)

12.

3360/62
1034

1

Ouverture.

^a
2. Violons.

Taille.

^e
Basse.

fol (7)



Par Mons:
Telemann.



Overture. Cembalo.

Preludio.

Aria. 1.

Aria

Aria

Journes

Aria

Handwritten musical notation for the first system, consisting of three staves. The top staff is the vocal line in treble clef, 4/4 time, with a key signature of one sharp (F#). The middle and bottom staves are accompaniment parts in treble and bass clefs respectively, featuring intricate sixteenth-note patterns.

Handwritten musical notation for the second system, consisting of two staves. The top staff is the vocal line in treble clef, 5/4 time, with a key signature of one sharp (F#). The bottom staff is the accompaniment part in bass clef. The word "Presto" is written above the first few notes of the vocal line.

Handwritten musical notation for the third system, consisting of two staves. The top staff is the vocal line in treble clef, 5/4 time, with a key signature of one sharp (F#). The bottom staff is the accompaniment part in bass clef, featuring a rhythmic pattern of eighth notes.

Handwritten musical notation for the fourth system, consisting of two staves. The top staff is the vocal line in treble clef, 6/8 time, with a key signature of one sharp (F#). The bottom staff is the accompaniment part in bass clef.

Handwritten musical notation for the fifth system, consisting of two staves. The top staff is the vocal line in treble clef, 6/8 time, with a key signature of one sharp (F#). The bottom staff is the accompaniment part in bass clef.

Handwritten musical notation for the sixth system, consisting of two staves. The top staff is the vocal line in treble clef, 6/8 time, with a key signature of one sharp (F#). The bottom staff is the accompaniment part in bass clef.

Handwritten musical notation for the seventh system, consisting of two staves. The top staff is the vocal line in treble clef, 6/8 time, with a key signature of one sharp (F#). The bottom staff is the accompaniment part in bass clef.

Handwritten musical notation for the eighth system, consisting of two staves. The top staff is the vocal line in treble clef, 6/8 time, with a key signature of one sharp (F#). The bottom staff is the accompaniment part in bass clef.



Ouverture. 3360/62
1034 Violino. 1. 2

The image shows a page of handwritten musical notation for a violin part. The score is written on ten staves. The first staff begins with a treble clef, a key signature of one sharp (F#), and a common time signature (C). The notation includes various rhythmic values, including sixteenth and thirty-second notes, and rests. There are several dynamic markings and performance instructions written in cursive: 'Hautb.' (likely 'Hautbois' or 'Hautbois') appears on the 7th, 8th, and 9th staves; 'Tutti' appears on the 7th, 8th, and 9th staves. The music concludes with a double bar line and repeat dots on the 10th staff.

Tourner

Preludio

Handwritten musical score for the Preludio section, consisting of four staves of music in G major and common time. The notation includes various rhythmic values, accidentals, and phrasing slurs.

Aria 1.

Handwritten musical score for the first Aria, consisting of four staves of music in G major and common time. The notation includes various rhythmic values, accidentals, and phrasing slurs.

Aria 2.

Handwritten musical score for the second Aria, consisting of three staves of music in G major and common time. The notation includes various rhythmic values, accidentals, and phrasing slurs.

Aria.

Handwritten musical notation for the first system, consisting of five staves. The notation includes treble and bass clefs, a key signature of one sharp (F#), and a 3/4 time signature. The music features various note values, rests, and dynamic markings such as *tr* (trills).

Handwritten musical notation for the second system, consisting of five staves. The notation includes treble and bass clefs, a key signature of one sharp (F#), and a 4/4 time signature. The music continues with similar notation to the first system, including trills and other ornaments.

Handwritten musical notation for the third system, consisting of five staves. The notation includes treble and bass clefs, a key signature of one sharp (F#), and a common time signature (C). The music features a more rhythmic and melodic style with various note values and rests.

Volta

Aria. 6.

Handwritten musical score for an aria, consisting of six staves of music. The notation includes treble clefs, a key signature of one sharp (F#), and a time signature of 3/4. The music features various note values, rests, and ornaments. The sixth staff concludes with a double bar line and a decorative flourish.



Overture. ³³⁶⁰1034/62 Violino. 2.4

Handwritten musical score for Violino, Overture. The score consists of 12 staves of music. The notation includes various rhythmic values, accidentals, and dynamic markings such as "Forte" and "Tutti". The paper is aged and shows some wear at the edges.

Forte.

Preludio.

Handwritten musical notation for the Preludio section, consisting of four staves of music in G major and common time. The notation includes various rhythmic values and melodic lines.

Aria. 1.

Handwritten musical notation for the first Aria, consisting of four staves of music in G major and common time. The notation includes various rhythmic values and melodic lines.

Aria. 2.

Handwritten musical notation for the second Aria, consisting of four staves of music in G major and common time. The notation includes various rhythmic values and melodic lines.

Aria 3.

Handwritten musical notation for the first system of 'Aria 3', consisting of three staves with treble clefs and a key signature of one sharp (F#).

Handwritten musical notation for the second system of 'Aria 3', consisting of three staves with treble clefs and a key signature of one sharp (F#).

Handwritten musical notation for the third system of 'Aria 3', consisting of three staves with treble clefs and a key signature of one sharp (F#).

Handwritten musical notation for the fourth system of 'Aria 3', consisting of three staves with treble clefs and a key signature of one sharp (F#).

Handwritten musical notation for the fifth system of 'Aria 3', consisting of three staves with treble clefs and a key signature of one sharp (F#). The system concludes with a double bar line and a decorative flourish.

Overture. ^{2260/62} 1034 *Viola.* 6

The Overture section consists of ten staves of handwritten musical notation. It begins with a treble clef, a key signature of one sharp (F#), and a common time signature (C). The notation includes various rhythmic values, including eighth and sixteenth notes, and rests. There are several dynamic markings, such as 'f' (forte) and 'p' (piano), and articulation marks like slurs and accents. The section concludes with a double bar line.

The Intermedio section consists of two staves of handwritten musical notation. It begins with a treble clef, a key signature of one sharp (F#), and a common time signature (C). The notation features a series of sixteenth notes, creating a rhythmic pattern. It ends with a double bar line.

The Aria section consists of three staves of handwritten musical notation. It begins with a treble clef, a key signature of one sharp (F#), and a common time signature (C). The notation includes various rhythmic values and rests. It concludes with a double bar line.



Aria.

