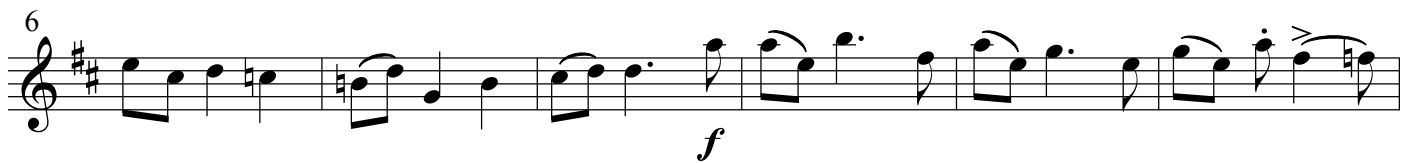


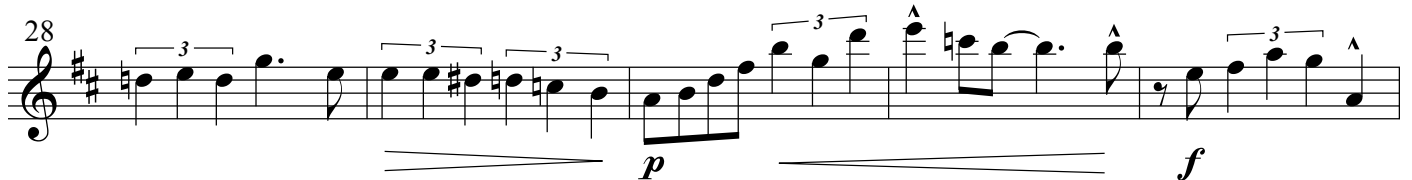
O Tannenbaum

ANONYME
arr. Jacques Larocque

Slowly, poco rubato ♩ = 66



Swing ♩ = 66



»» Open for solos

33 A7 Dmaj9 Em7 F#7(♭13) B7(♭9) Em7 A7(♭9) D A13(♭9)

p

38 D6 Gmin6/9 F#7(♭13) B7(♭9) Em7 A7(♭9) D Dmaj9 B7(#9)

43 Em7 Em7 A7(♭9) F#m7 Bm7 Em7 A7 Dmaj7 Em7 F#m7(♭5) B7(♭9)

48 Em7 A7

1. D	A13
------	-----

2. A13(♭9) »» Play as is

p

53

cresc.

58

f

63

p *f* *p*

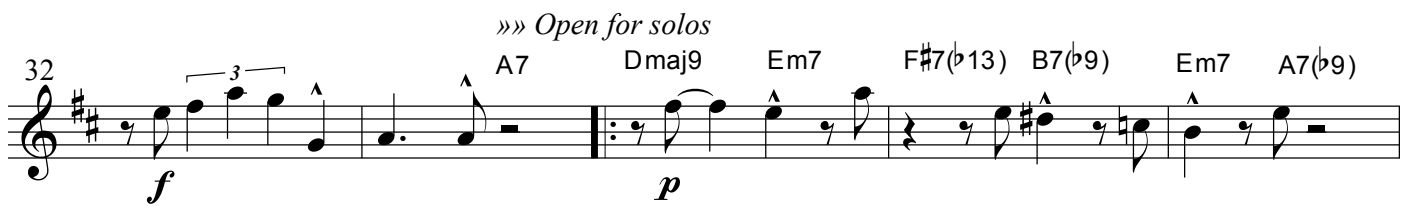
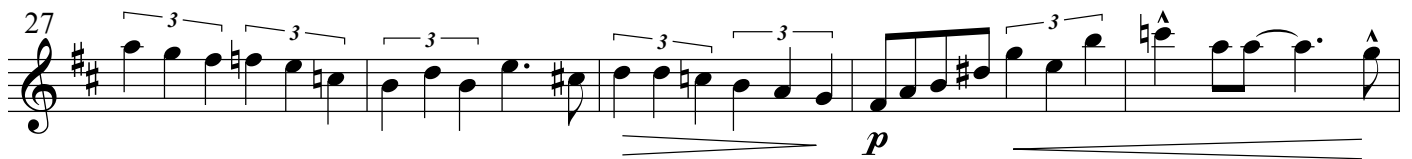
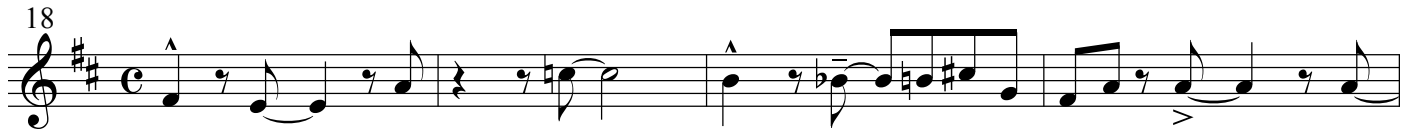
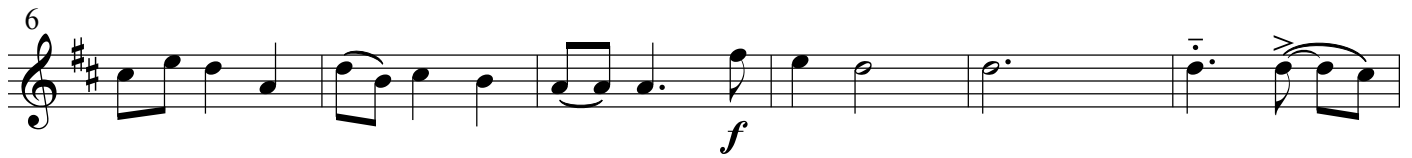
68

pp

O Tannenbaum

ANONYME
arr. Jacques Larocque

Slowly, poco rubato ♩ = 66



37 D A13(b9) D6 Gmin6/9 F#7(b13) B7(b9) Em7 A7(b9) D

Musical staff 37-41 in treble clef, key of D major. It features a melodic line with eighth and quarter notes, including accents and a triplet of eighth notes. Chord symbols are placed above the staff.

42 Dmaj9 B7(#9) Em7 Em7 A7(b9) F#m7 Bm7 Em7 A7 Dmaj7 Em7

Musical staff 42-46 in treble clef, key of D major. It continues the melodic line with eighth and quarter notes, including accents and a triplet of eighth notes. Chord symbols are placed above the staff.

47 F#m7(b5) B7(b9) Em7 A7 1. D A13 2. A13(b9) »» Play as is

Musical staff 47-51 in treble clef, key of D major. It includes a first ending (1. D A13) and a second ending (2. A13(b9) »» Play as is). The second ending starts with a piano (*p*) dynamic. Chord symbols are placed above the staff.

52

Musical staff 52-56 in treble clef, key of D major. It features a melodic line with eighth and quarter notes, including accents and triplets. A crescendo (*cresc.*) marking is at the end of the staff.

57

Musical staff 57-61 in treble clef, key of D major. It features a melodic line with eighth and quarter notes, including accents and triplets. A forte (*f*) dynamic marking is at the beginning of the staff.

62

Musical staff 62-66 in treble clef, key of D major. It features a melodic line with eighth and quarter notes, including accents and triplets. Dynamics range from piano (*p*) to forte (*f*) and back to piano (*p*).

67

Musical staff 67-71 in treble clef, key of D major. It features a melodic line with eighth and quarter notes, including accents and triplets. A pianissimo (*pp*) dynamic marking is at the end of the staff.