

Concerto in Eb

for Trumpet & Organ

(TWV 51:Es1)

Bb Trumpet

Georg Philipp Telemann (1681 - 1767)

Arr. Michel Rondeau

1. Allegro ♩ = 90

13

16

20

24

29

33

40

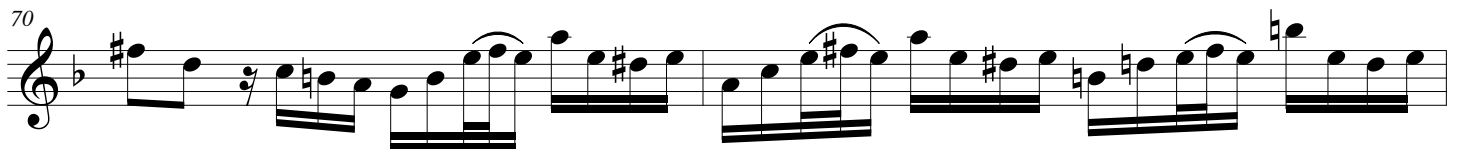
43

46

49

4

2



93

97

104 **2. Largo**

110

119

126

133

141

150

156 **3. Allegro**

185

Telemann - Concerto in Eb, TWV 51:Es1 - Bb trumpet

193 Musical staff 193-200: Treble clef, B-flat key signature. Measures 193-200 contain a series of eighth-note patterns, including a trill (tr) in measure 200.

201 Musical staff 201-213: Treble clef, B-flat key signature. Measure 201 starts with a five-measure rest (5). Measures 202-213 continue with eighth-note patterns.

214 Musical staff 214-222: Treble clef, B-flat key signature. Measure 214 starts with a two-measure rest (2). Measures 215-222 continue with eighth-note patterns.

223 Musical staff 223-230: Treble clef, B-flat key signature. Measures 223-230 contain eighth-note patterns with a key signature change to one sharp (F#) in measure 227.

231 Musical staff 231-242: Treble clef, B-flat key signature. Measures 231-242 contain eighth-note patterns with a key signature change to one sharp (F#) in measure 237.

243 Musical staff 243-252: Treble clef, B-flat key signature. Measure 243 starts with a whole note rest. Measures 244-252 contain eighth-note patterns with a key signature change to one sharp (F#) in measure 247.

253 Musical staff 253-261: Treble clef, B-flat key signature. Measures 253-261 contain eighth-note patterns with a key signature change to one sharp (F#) in measure 257.

262 Musical staff 262-270: Treble clef, B-flat key signature. Measures 262-270 contain eighth-note patterns with a key signature change to one sharp (F#) in measure 267.

271 Musical staff 271-277: Treble clef, B-flat key signature. Measures 271-277 contain eighth-note patterns with a key signature change to one sharp (F#) in measure 274.

278 Musical staff 278-285: Treble clef, B-flat key signature. Measures 278-285 contain eighth-note patterns with a key signature change to one sharp (F#) in measure 281.

D.C.