

Double Bass

Capriccio Humoresque

for Pianoforte & Orchestra

Daniel Léo Simpson
Palo Alto, California
Spring 1996

Allegro ♩=126

poco rit..

rit. . .

ff

poco meno mosso ♩=120

poco rall..

p *f*

33 **meno mosso** $\text{♩} = 120$ *pizz.* **2** **11**

52 *rit. arco* **Allegro con brio** $\text{♩} = 120$ **12**

70 *poco rit.* **poco meno mosso** $\text{♩} = 120$ *pizz.* **11** *poco rit.*

85 **a tempo** $\text{♩} = 126$ **5** *(pizz.)* *arco*

95 **3** *mf*

102 **ff** *poco rit.*

106 **meno mosso** $\text{♩} = 108$ *accel.* **mp**

110 **a tempo** $\text{♩} = 126$ **2** **f** **ff**

116 *rit.* **meno mosso** $\text{♩} = 108$ **2** **f** **mp** **mf**

123

mp *mf* *mf*

130

136

pp rit. arco

140

mp accel. più mosso

147

cresc. accel. arco

151

ff *f* *f* Allegro con brio

165

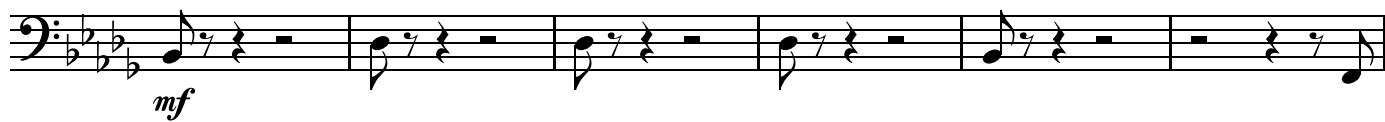
168

ff *mf* *f* poco accel. tempo giusto

178

ff tempo giusto

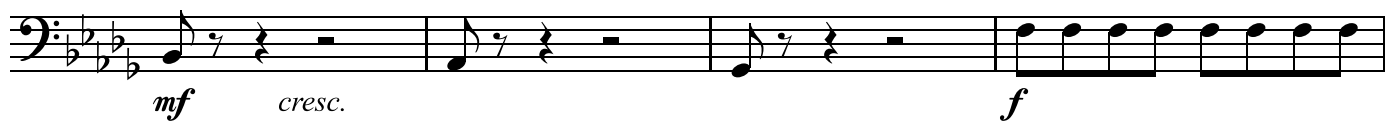
182 pizz.



188



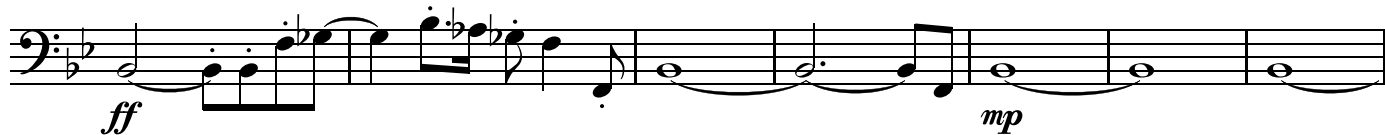
194



198



201



208



213

