

Sinfonia in D (G.4)

for Trumpet, Strings & Continuo

I

Double Bass

Giuseppe Torelli (1658-1709)

Arr. Michel Rondeau

Allegro (♩ = circa 103)

5

10

14

19

24

29

II

Double Bass

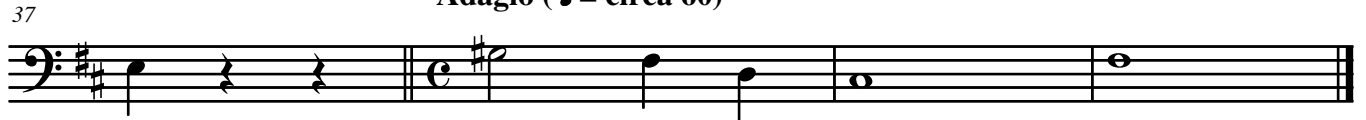
Giuseppe Torelli (1658-1709)

Arr. Michel Rondeau

Adagio e spiccato (♩ = circa 60) Presto (♩ = 60)



Adagio (♩ = circa 60)



III

Double Bass

Giuseppe Torelli (1658-1709)

Arr. Michel Rondeau

Allegro (♩. = circa 105)

