

Ouverture und Suiten aus Thésée ¹

Ouverture

J.-B. Lully

Viola 1



[1. Suite]

1. Prélude

15

21

37

Trio tacet

3. Combattans

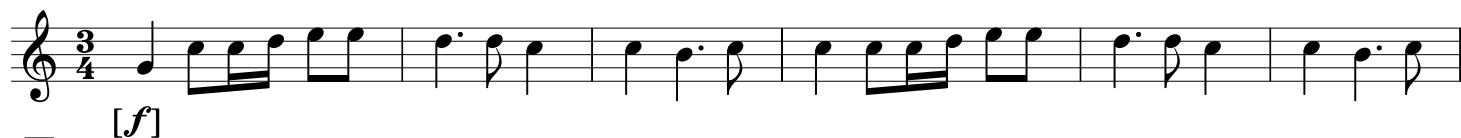
6

11

15

19

4. [Air]



7



13



27



32



38



46



5. Air



11



20



29



Trio tacet

2. Suite

7. Prélude



7



13



18



23



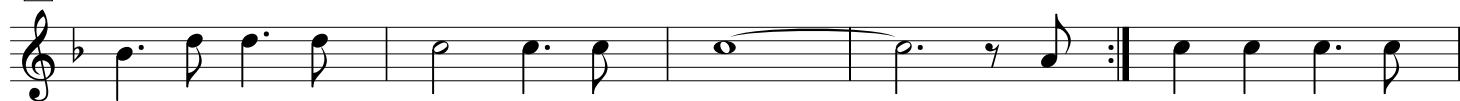
27



8. Air



6



11



16



21



9. Air

Musical score for "9. Air" in 3/4 time, key of B-flat major. The score consists of four staves of music. The first staff shows the beginning of the piece. The second staff starts at measure 8 and includes first and second endings. The third staff starts at measure 16. The fourth staff starts at measure 22 and includes a trill (tr) above the final measure.

3. Suite 10. Prélude

Musical score for "3. Suite 10. Prélude" in common time, key of B-flat major. The score consists of three staves of music. The first staff shows the beginning of the piece. The second staff starts at measure 7. The third staff starts at measure 13 and ends with a whole note.

11. Air

Musical score for "11. Air" in common time, key of B-flat major. The score consists of four staves of music. The first staff shows the beginning of the piece and includes first and second endings. The second staff starts at measure 9. The third staff starts at measure 16. The fourth staff starts at measure 23 and includes trills (tr) above the first and second measures, a piano (p) dynamic marking below the first measure, and first and second endings.

Trio tacet

13. Air

Musical score for '13. Air' in 6/8 time. The score consists of three staves. The first staff begins with a repeat sign and a trill (tr) over the first measure. The second staff starts at measure 7 and includes another trill. The third staff starts at measure 12 and features a first and second ending bracket.

4. Suite

14. Air

Musical score for '14. Air' in 3/4 time. The score consists of three staves. The first staff begins with a key signature change to one flat. The second staff starts at measure 11. The third staff starts at measure 19 and ends with a double bar line and repeat sign.

15. Gique

Musical score for '15. Gique' in 6/4 time. The score consists of three staves. The first staff begins with a repeat sign and a fermata (fin) over the final note. The second staff starts at measure 7. The third staff starts at measure 14 and ends with a double bar line and repeat sign.

da capo §