

Missa S. Petri

Kyrie

J.A. Reichenauer

Violino 2 *Grave*

[8] *Allegro*

[13]

[17]

[20]

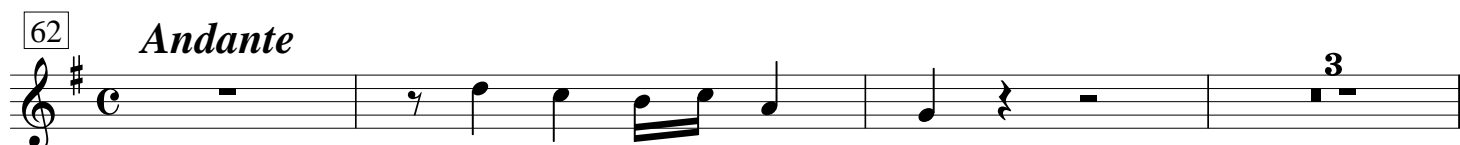
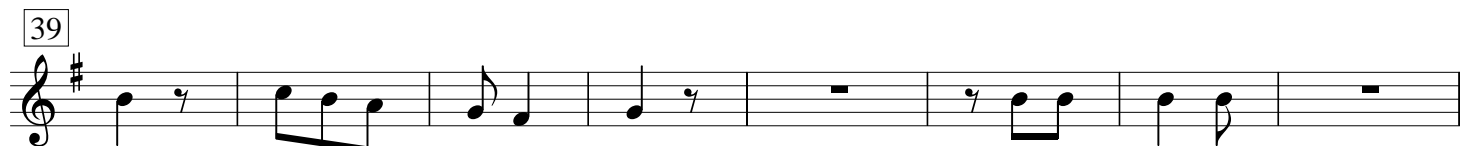
[23]

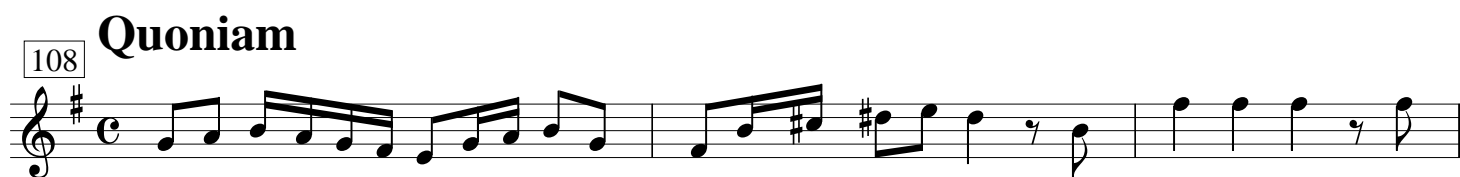
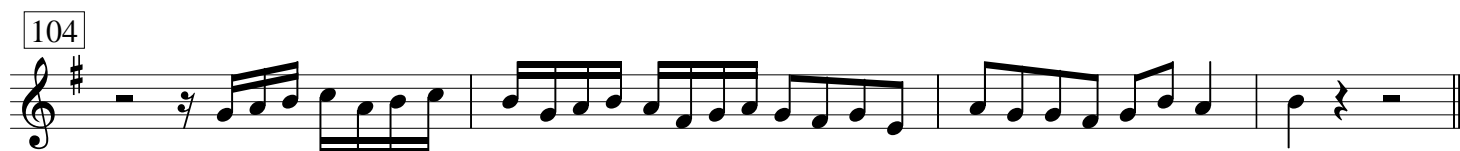
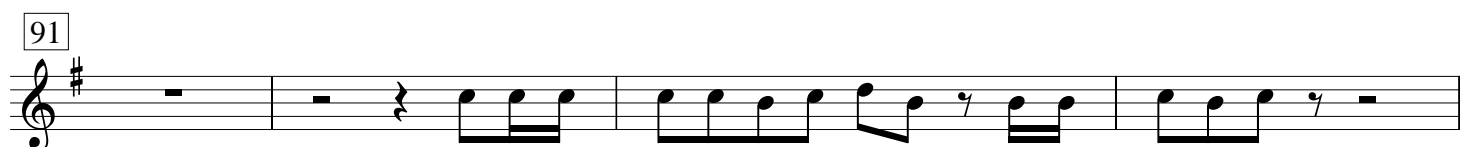
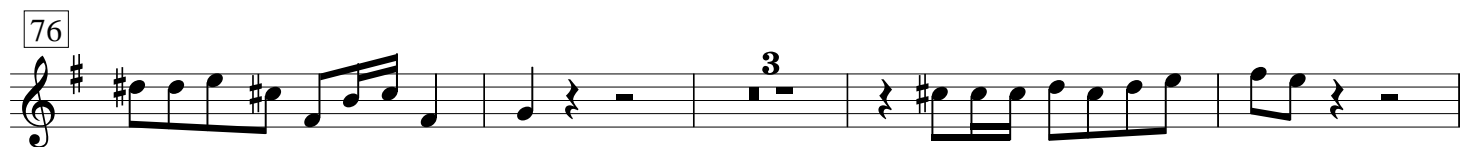
[26]

[30]

Gloria

Allegro





115




Musical notation for measure 115, starting with a treble clef and a key signature of one sharp (F#). The notation includes a whole rest, a quarter rest, and a series of eighth and sixteenth notes.

119



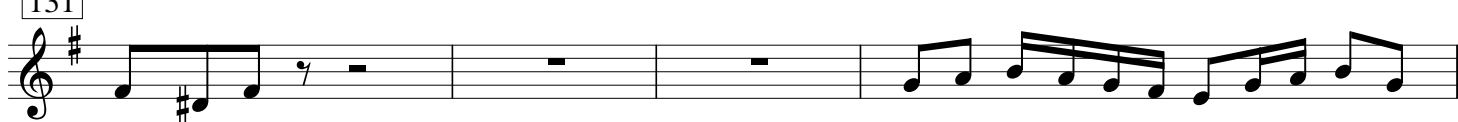
Musical notation for measure 119, starting with a treble clef and a key signature of one sharp (F#). The notation includes a series of eighth and sixteenth notes, a quarter rest, and a final quarter note with a '4' above it.

127



Musical notation for measure 127, starting with a treble clef and a key signature of one sharp (F#). The notation includes a series of eighth and sixteenth notes, a quarter rest, and a final quarter note.

131



Musical notation for measure 131, starting with a treble clef and a key signature of one sharp (F#). The notation includes a series of eighth and sixteenth notes, a quarter rest, and a final quarter note.

135



Musical notation for measure 135, starting with a treble clef and a key signature of one sharp (F#). The notation includes a series of eighth and sixteenth notes, a quarter rest, and a final quarter note.

139



Musical notation for measure 139, starting with a treble clef and a key signature of one sharp (F#). The notation includes a series of eighth and sixteenth notes, a quarter rest, and a final quarter note.

142



Musical notation for measure 142, starting with a treble clef and a key signature of one sharp (F#). The notation includes a series of eighth and sixteenth notes, a quarter rest, and a final quarter note.

146



Musical notation for measure 146, starting with a treble clef and a key signature of one sharp (F#). The notation includes a series of eighth and sixteenth notes, a quarter rest, and a final quarter note.

149



Musical notation for measure 149, starting with a treble clef and a key signature of one sharp (F#). The notation includes a series of eighth and sixteenth notes, a quarter rest, and a final quarter note.

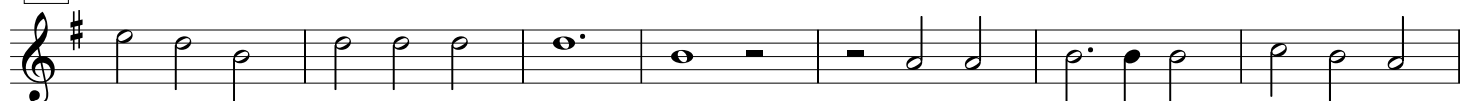
Credo



7



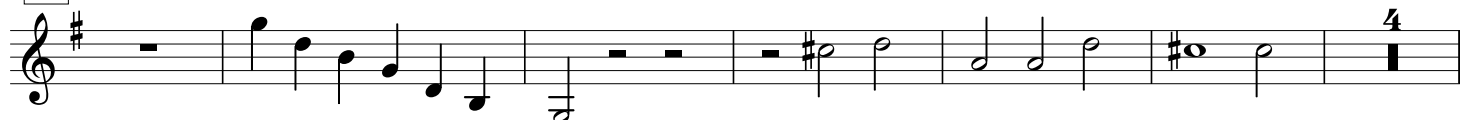
13



20



29



39



45



57



66



72



79



86 *Largo*

90



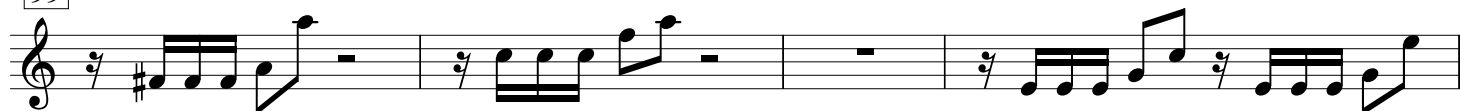
93



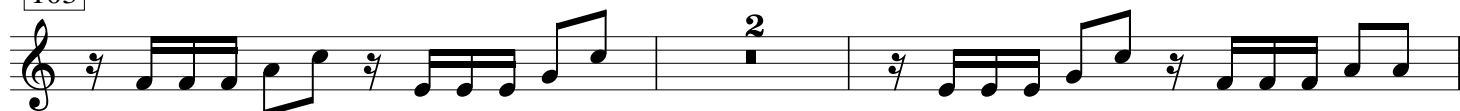
96



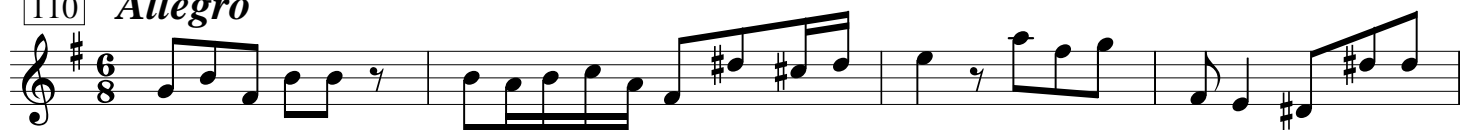
99



103



107

110 *Allegro*

114



120




124



129



133



139



143

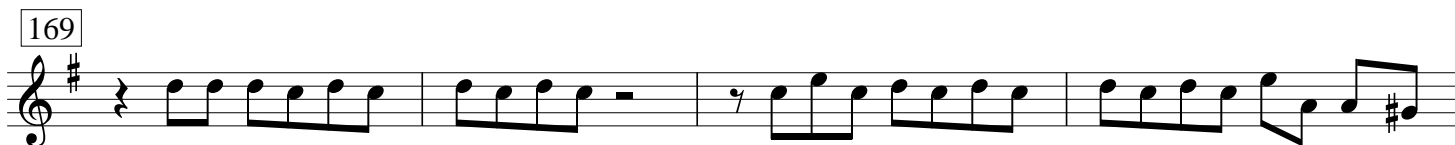
Andante
18



165



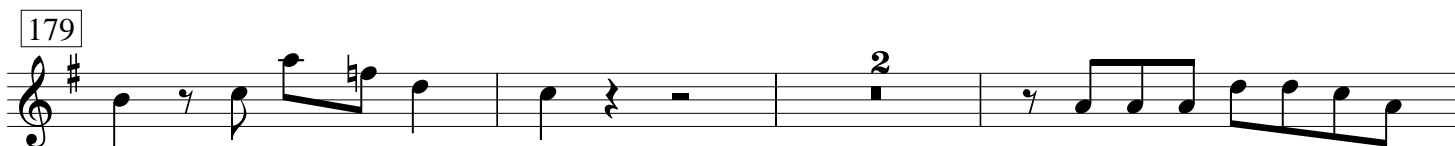
169



173



179



184



188



191



Sanctus



Agnus Dei

