

Volks-Lieder

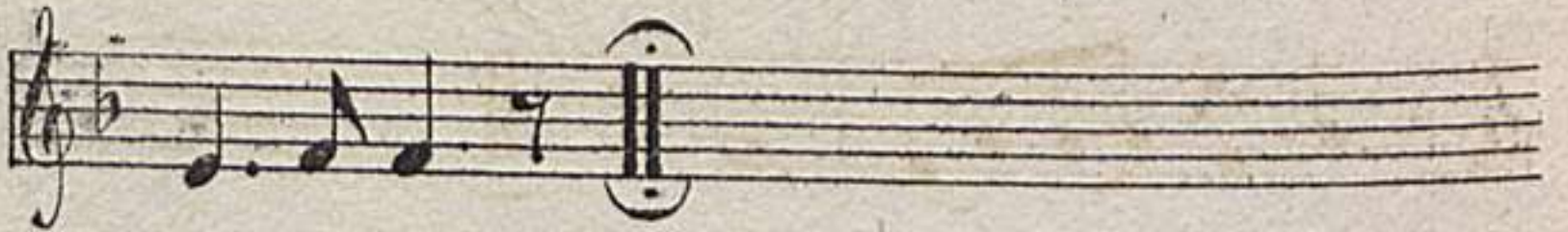
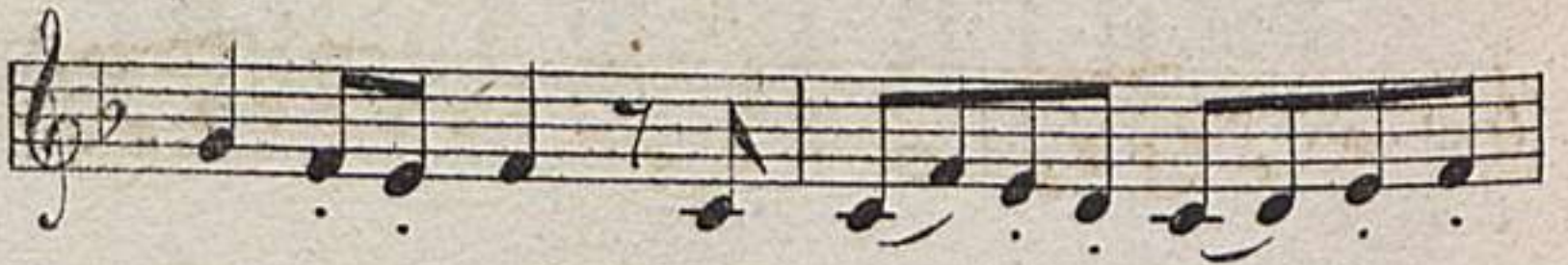
für das

Posthorn.

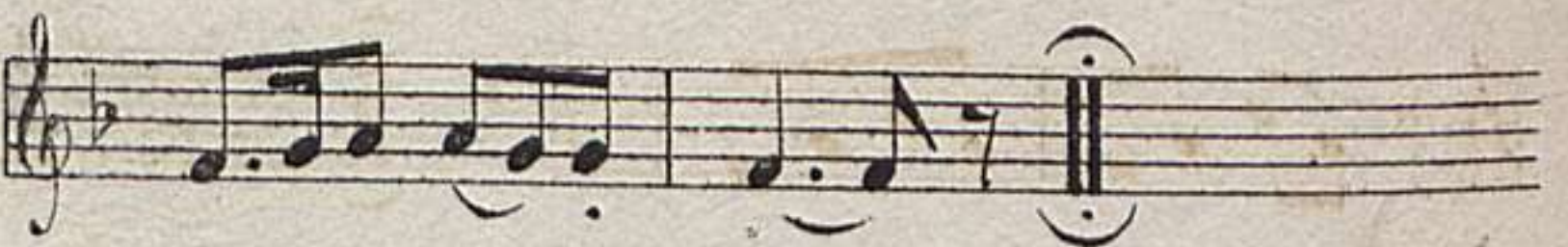
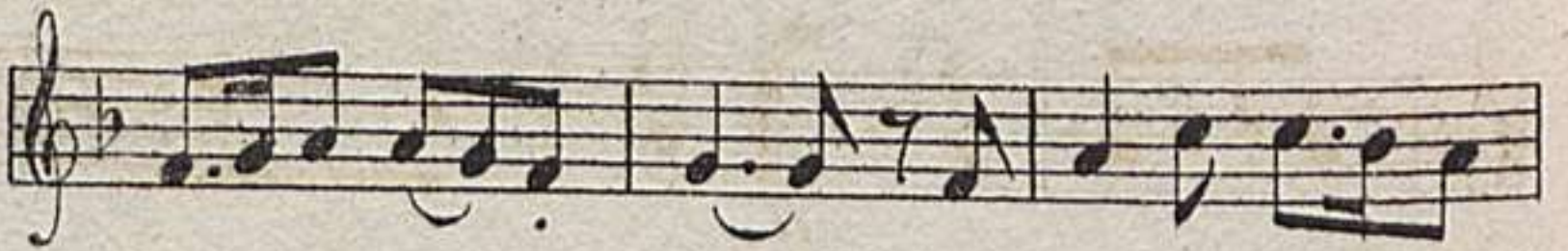


v. J. 1886

Nº 1. 



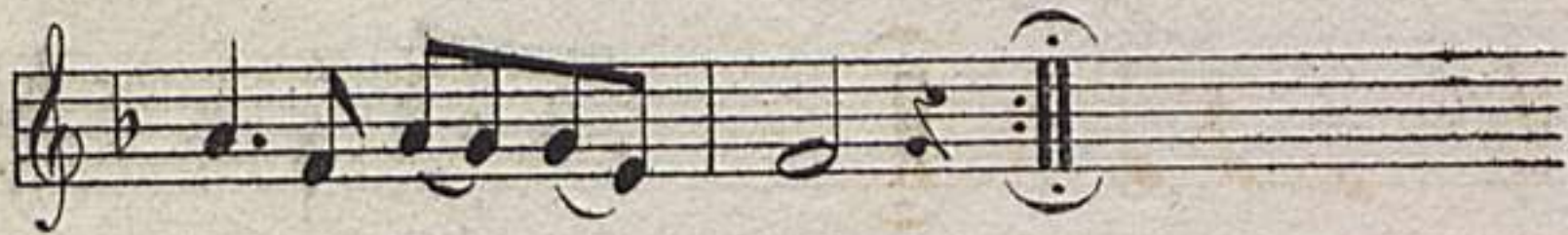
Nº 2. 



No. 3.  Musical notation for No. 3, first staff. Treble clef, common time signature (C). The melody begins with a quarter rest, followed by a series of eighth and quarter notes.

 Musical notation for No. 3, second staff. Continuation of the melody with various note values and rests.

 Musical notation for No. 3, third staff. Continuation of the melody with various note values and rests.

 Musical notation for No. 3, fourth staff. Continuation of the melody, ending with a double bar line and repeat dots.

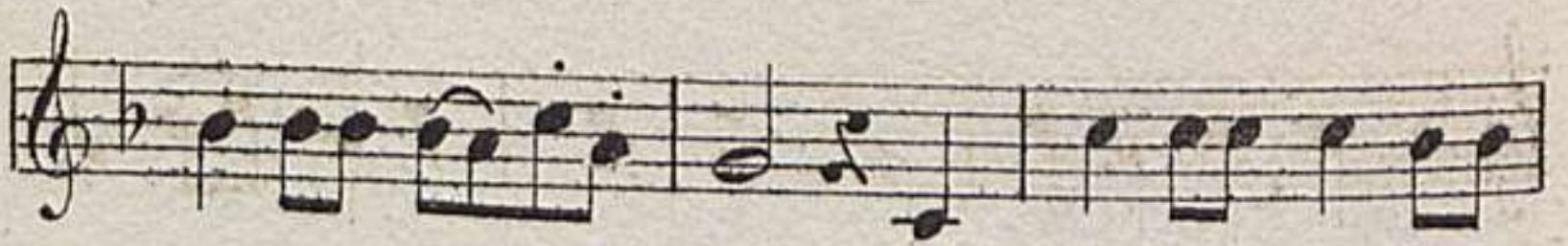
No. 4.  Musical notation for No. 4, first staff. Treble clef, 2/4 time signature. The melody begins with a quarter note, followed by eighth and quarter notes.

 Musical notation for No. 4, second staff. Continuation of the melody with various note values and rests.

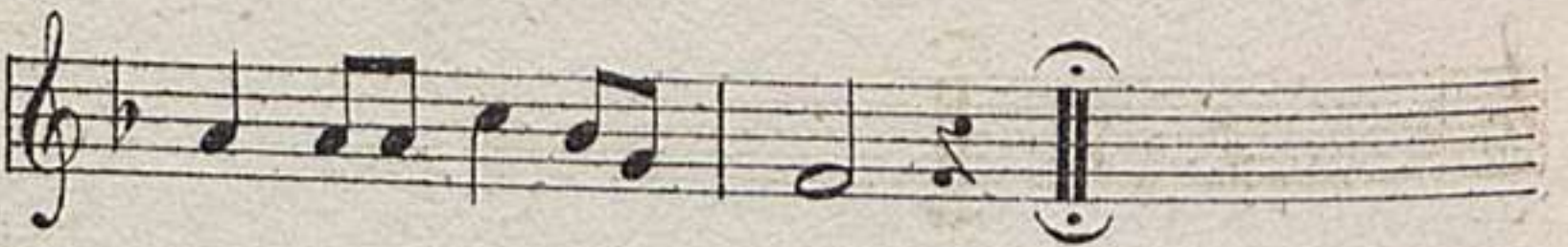
 Musical notation for No. 4, third staff. Continuation of the melody with various note values and rests.

 Musical notation for No. 4, fourth staff. Continuation of the melody, ending with a double bar line and repeat dots.

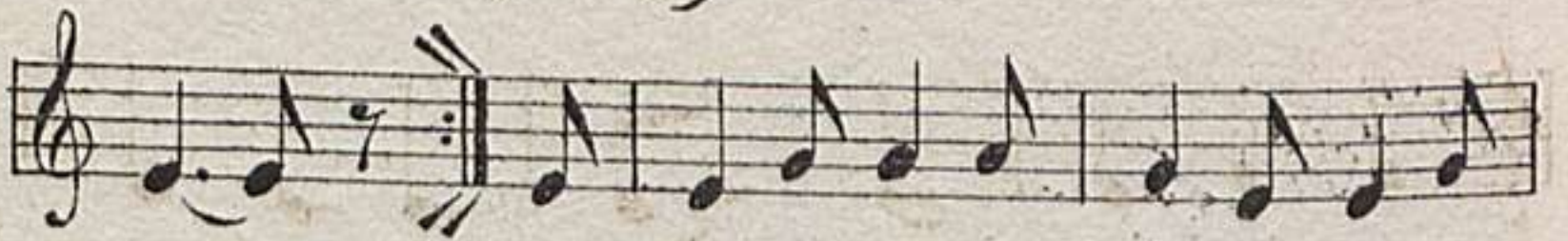
No 5. 



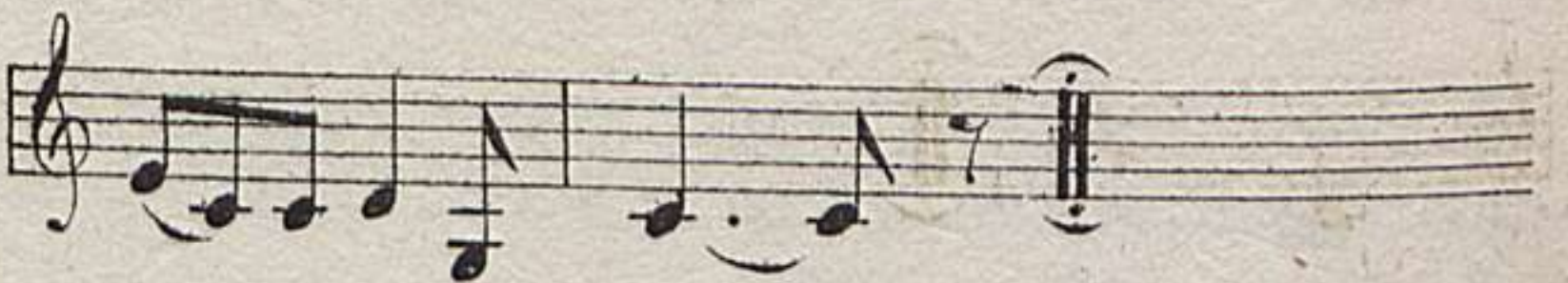




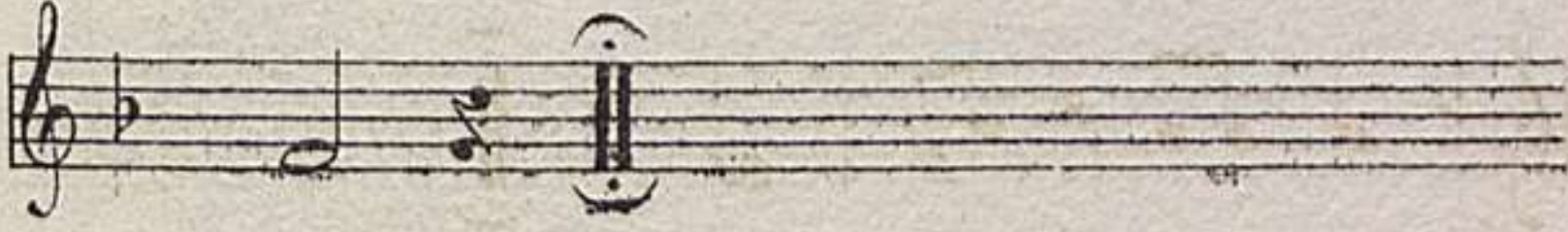
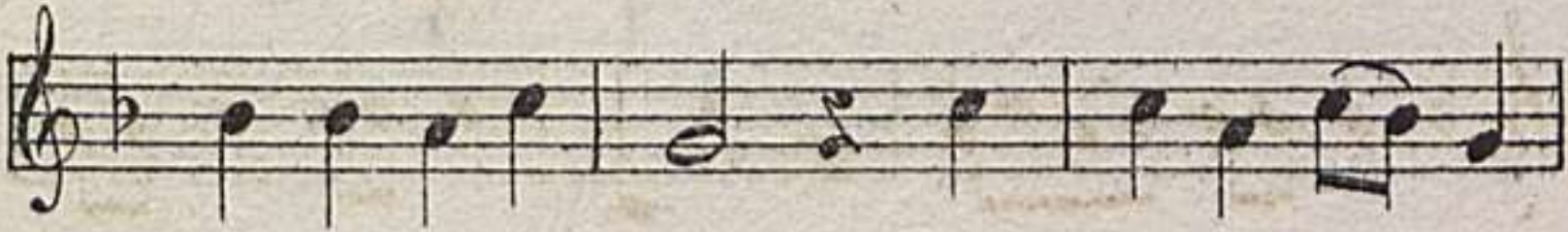
No 6. 



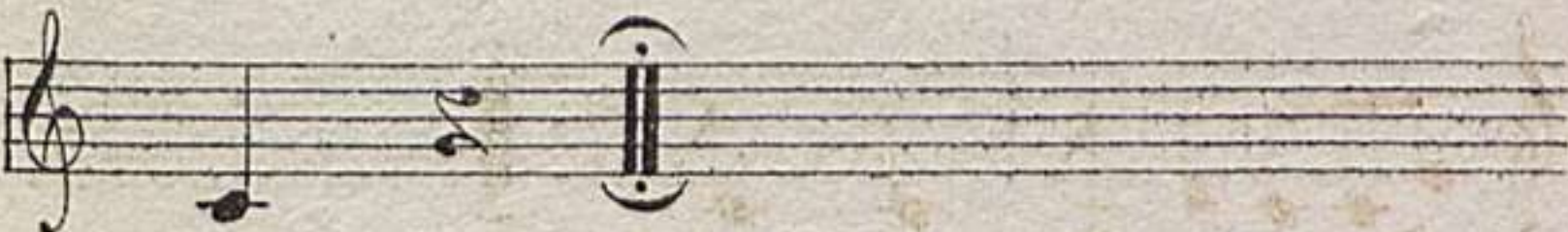




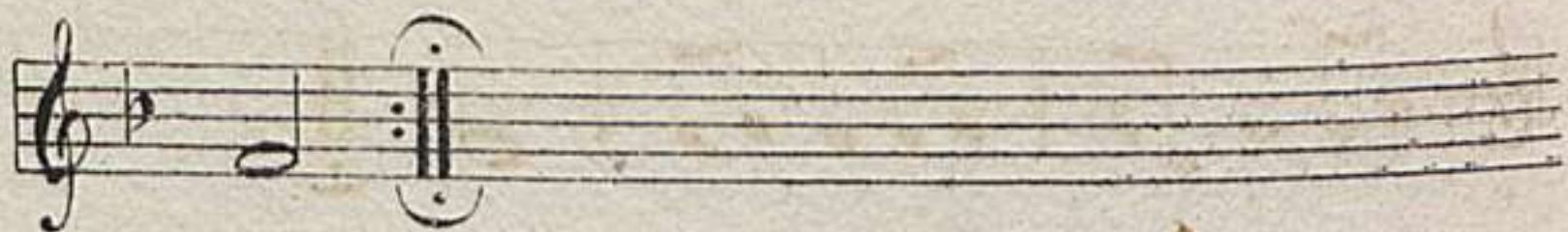
No 7.



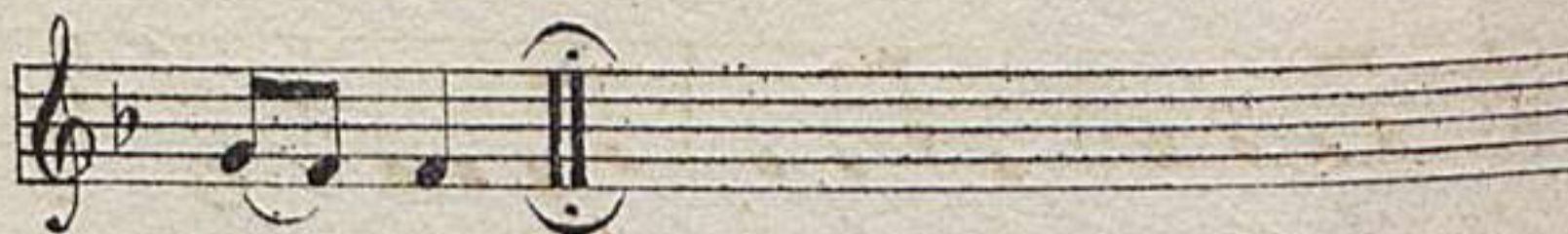
No 8.



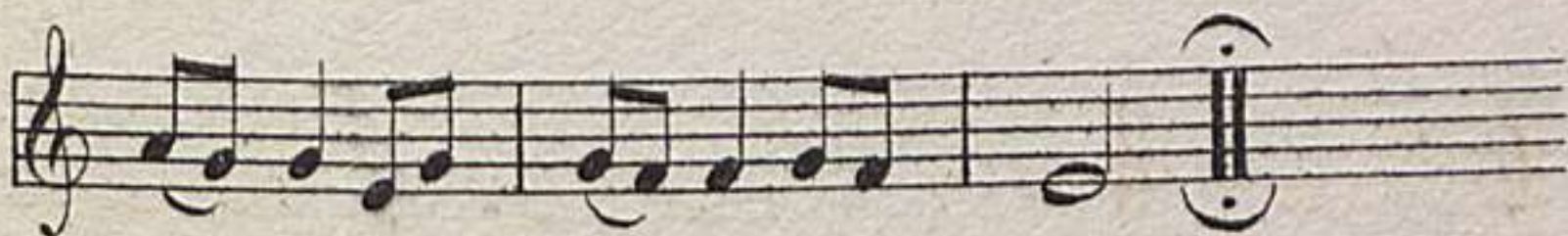
Nº 9 



Nº 10 



Nº 11.



Nº 12




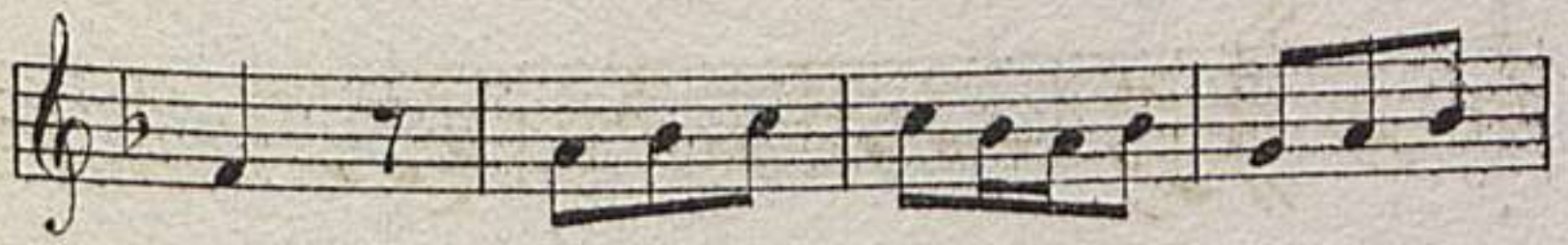
N^o 13.

Musical score for No. 13, consisting of four staves of music in 3/4 time. The first staff begins with a treble clef and a 3/4 time signature. The melody consists of eighth and sixteenth notes. The second staff features a repeat sign at the beginning. The third and fourth staves continue the melodic line, with the fourth staff ending in a double bar line.

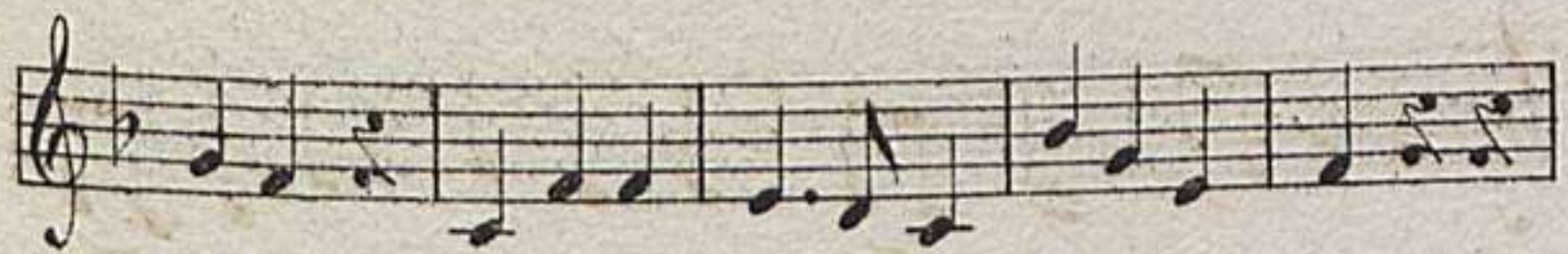
N^o 14.

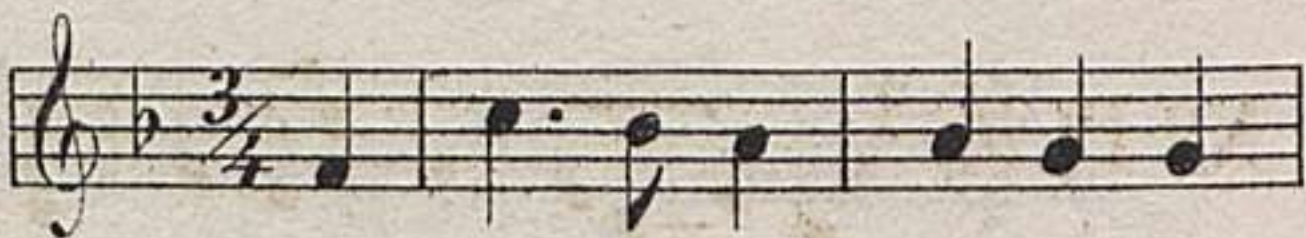
Musical score for No. 14, consisting of four staves of music in 3/4 time. The first staff begins with a treble clef and a 3/4 time signature. The melody consists of eighth and sixteenth notes. The second and third staves continue the melodic line. The fourth staff ends with a double bar line.

N^o 15. 



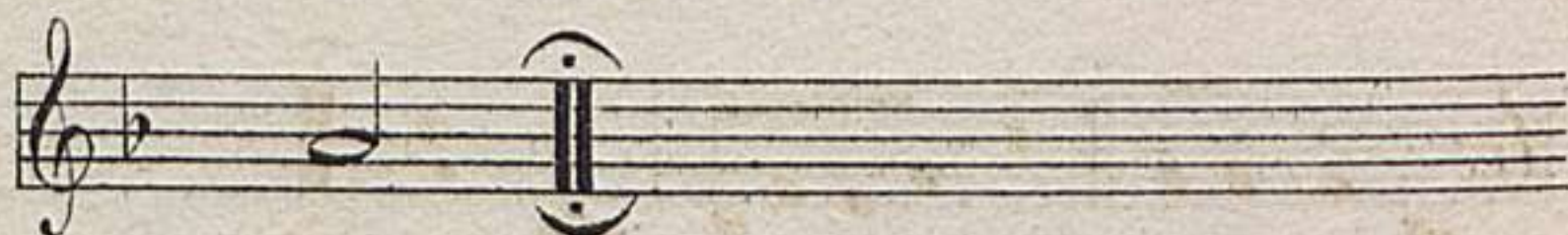
N^o 16. 



Nº 17. 



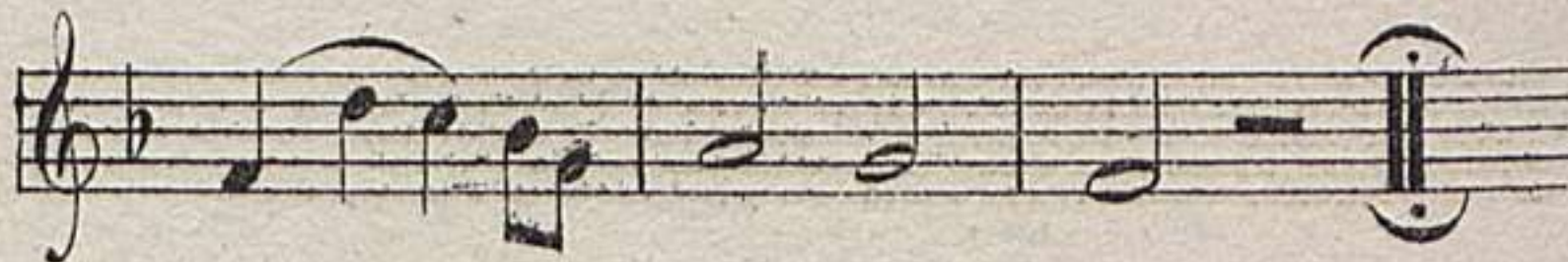




Nº 18. 



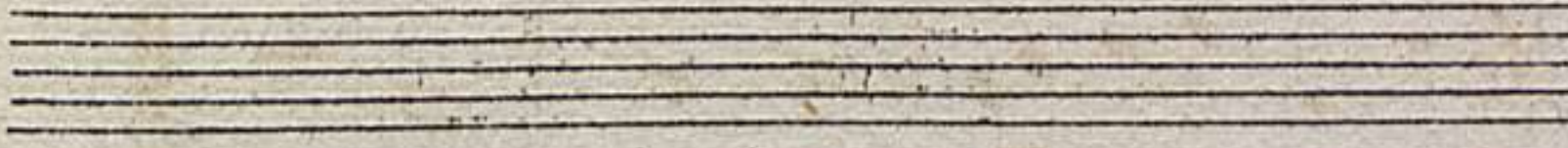
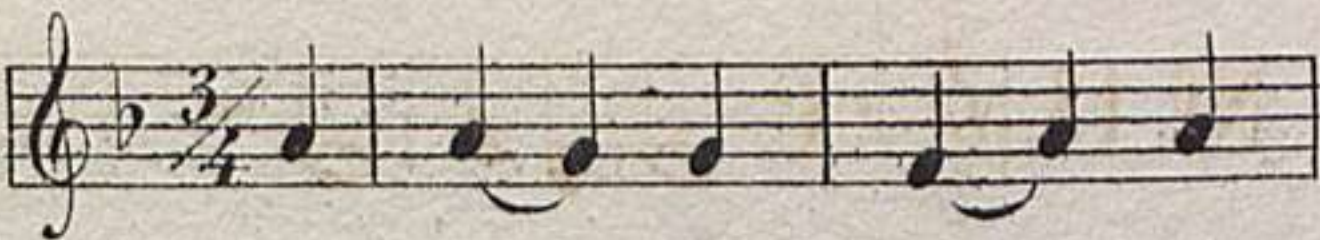




Nº 19.



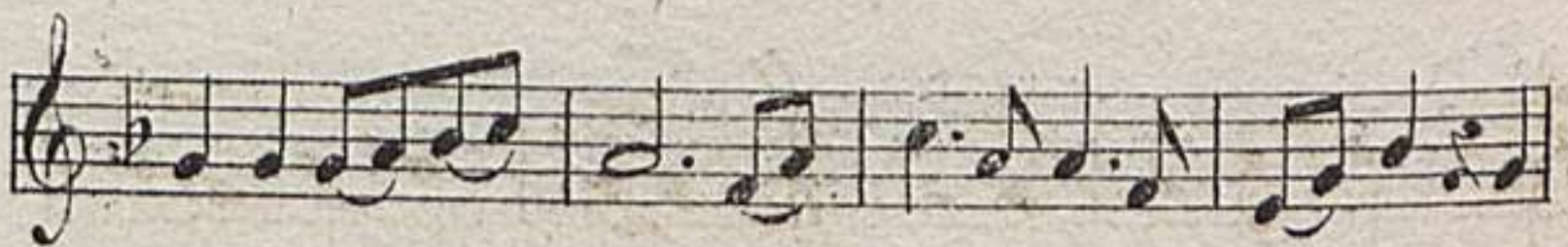
Nº 20



N^o 21. 




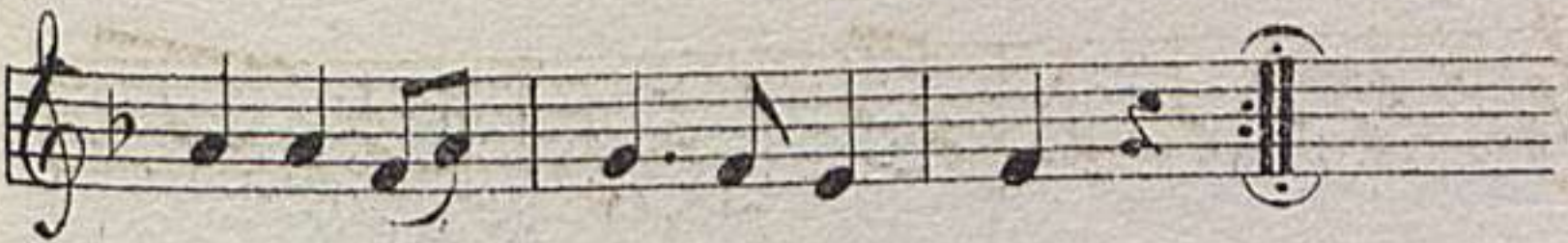
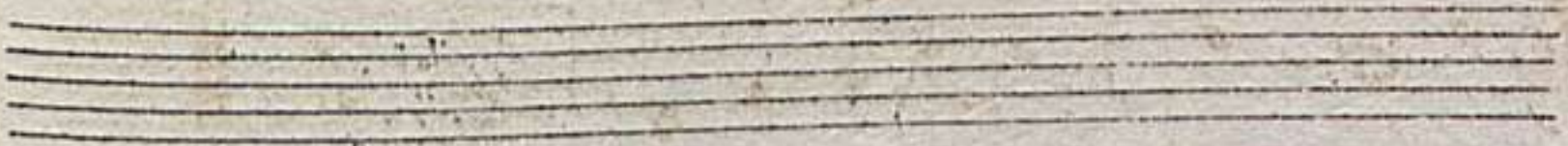
N^o 22. 



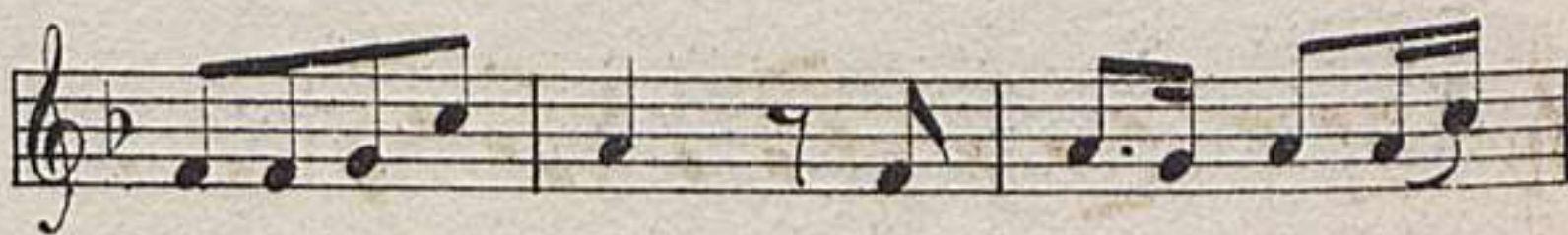
N^o 23.  Musical notation for No. 23, first staff. Treble clef, 2/4 time signature. The staff contains a sequence of eighth and sixteenth notes, some beamed together, with a fermata over the final note.

 Musical notation for No. 23, second staff. Treble clef. The staff contains a sequence of eighth and sixteenth notes, with a repeat sign and a fermata over the final note. Musical notation for No. 23, third staff. Treble clef. The staff contains a sequence of eighth and sixteenth notes, with a fermata over the final note. Musical notation for No. 23, fourth staff. Treble clef. The staff contains a sequence of eighth and sixteenth notes, with a repeat sign and a fermata over the final note.

N^o 24.  Musical notation for No. 24, first staff. Treble clef, 3/4 time signature. The staff contains a sequence of quarter and eighth notes, with a fermata over the final note.

 Musical notation for No. 24, second staff. Treble clef. The staff contains a sequence of quarter and eighth notes, with a repeat sign and a fermata over the final note. Musical notation for No. 24, third staff. Treble clef. The staff contains a sequence of quarter and eighth notes, with a repeat sign and a fermata over the final note. Three empty musical staves at the bottom of the page.

Nº 25. 







Nº 26. 



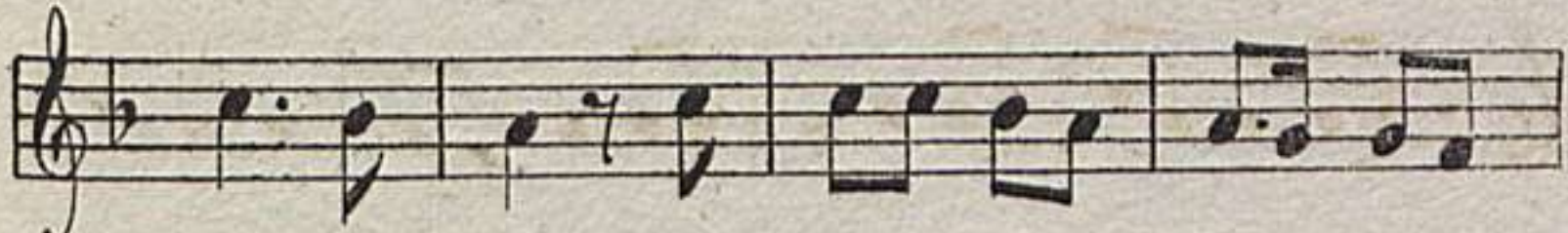
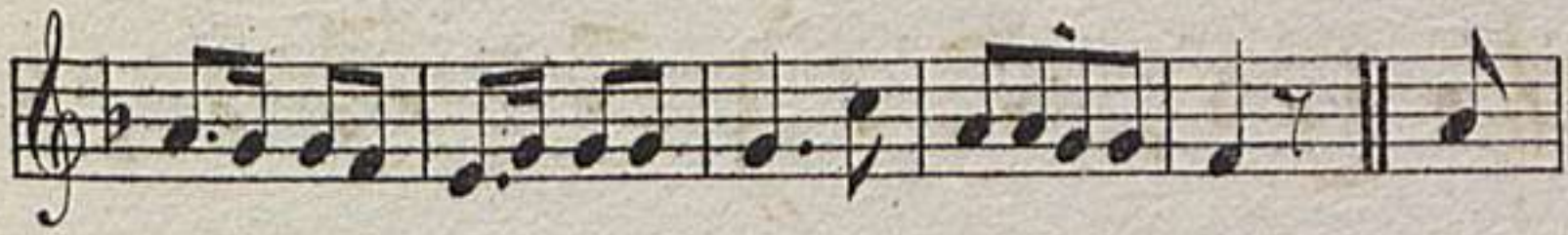




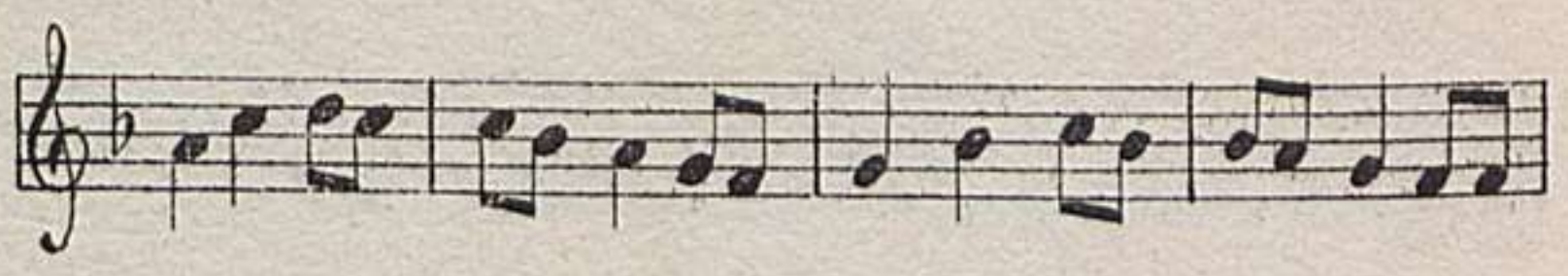
Nº 27. 



Nº 28. 



No 29.  Musical notation for No 29, first staff. Treble clef, 3/4 time signature, key signature of one flat. The melody consists of eighth and quarter notes.

 Musical notation for No 29, second staff. Treble clef, 3/4 time signature, key signature of one flat. The melody continues with eighth and quarter notes, ending with a repeat sign. Musical notation for No 29, third staff. Treble clef, 3/4 time signature, key signature of one flat. The melody continues with eighth and quarter notes. Musical notation for No 29, fourth staff. Treble clef, 3/4 time signature, key signature of one flat. The melody continues with eighth and quarter notes, ending with a repeat sign.

No 30.  Musical notation for No 30, first staff. Treble clef, 6/8 time signature, key signature of one flat. The melody consists of eighth and quarter notes.

 Musical notation for No 30, second staff. Treble clef, 6/8 time signature, key signature of one flat. The melody continues with eighth and quarter notes. Musical notation for No 30, third staff. Treble clef, 6/8 time signature, key signature of one flat. The melody continues with eighth and quarter notes, ending with a repeat sign. Musical notation for No 30, fourth staff. Treble clef, 6/8 time signature, key signature of one flat. The melody continues with eighth and quarter notes, ending with a repeat sign.