

Cello Concerto in G Major

RV 413

Violoncello

Antonio Vivaldi

(1678 - 1741)

I

Allegro

Musical score for Cello Concerto in G Major, Part I, measures 18-65. The score is written for Cello (Violoncello) and includes various musical notations such as notes, rests, dynamics, and performance instructions.

Measures 18-25: **18**, **20**, **25**. Includes dynamics *v* and *f*.

Measures 30-35: **30**, **35**. Includes dynamics *p* (*stacc. volant*) and *f*.

Measures 40-45: **40**, **41**. Includes dynamics *p* and *spiccato*.

Measures 55-60: **55**, **60**. Includes dynamics *p* and *giocoso*.

Measures 65-70: **65**. Includes dynamics *p*.

Performance instructions include *tr* (trill), *v* (accents), *spiccato*, and *giocoso*. Fingerings (1-4) and bowings (I, II) are indicated throughout the score.

Violoncello

This page contains the cello part of Vivaldi's Concerto in G Major, measures 65 through 120. The score is written in G major and 3/4 time. It features a variety of musical techniques including triplets, slurs, accents, and trills. Measure numbers 70, 75, 85, 90, 95, 100, 105, 110, 115, and 120 are clearly marked. The piece concludes with a dynamic marking of *f* (forte) and a fermata over the final notes.

Violoncello

II

Largo

7

135

140

145

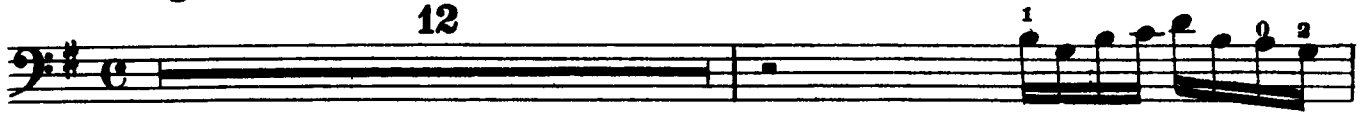
150

Violoncello

III

Allegro

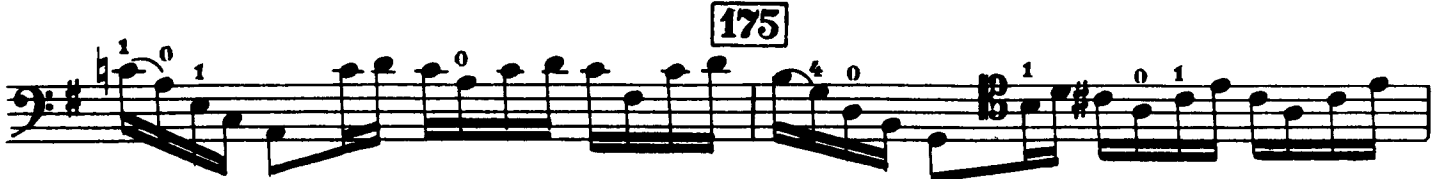
12



170



175



180



Violoncello

185

spiccato *spiccato*

II

190

III II I

195

I I

I

200

V₃ V

V₁

205

I

Violoncello

This page of the Violoncello score for Vivaldi's Concerto in G Major contains measures 205 through 230. The music is written in G major and 3/4 time. It features a variety of technical challenges, including sixteenth-note runs, triplets, and slurs. Measure numbers 210, 215, 220, and 225 are clearly marked in boxes. The score includes fingerings (1-4), bowings (V), and dynamic markings such as *f*. The piece concludes with a fermata on the final note of measure 230.