

*Violino II*

**Matinas do Natal**  
**Invitatório**

Edição: Paulo Castagna  
Partes: Fernando Binder  
Museu da Música de Mariana (MG - Brasil)

Anônimo



D.C.

**Responsório I**

*Allegro*



6

26



30



34



38



43

Allegro



51



58



66



73



81



88



96 Verso



101



106



111



116



122



128



134



Da Capo 2.o Allegro ao Fim

# Responsório II

Allegro

5

9

12

16

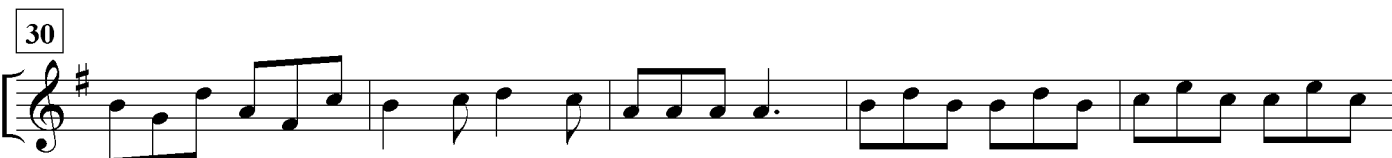
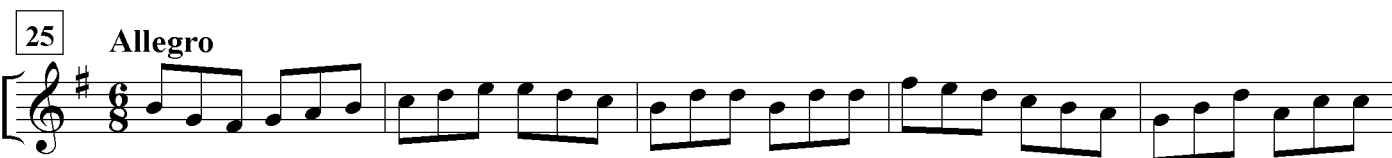
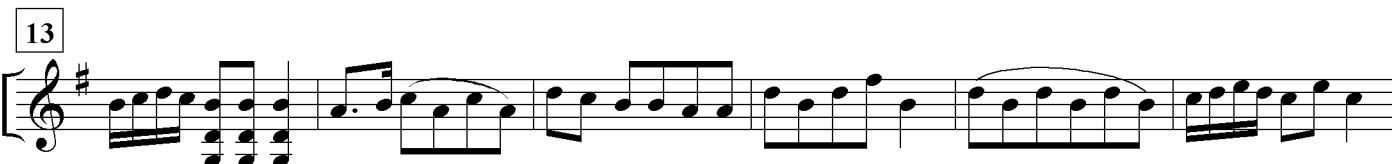
20

25



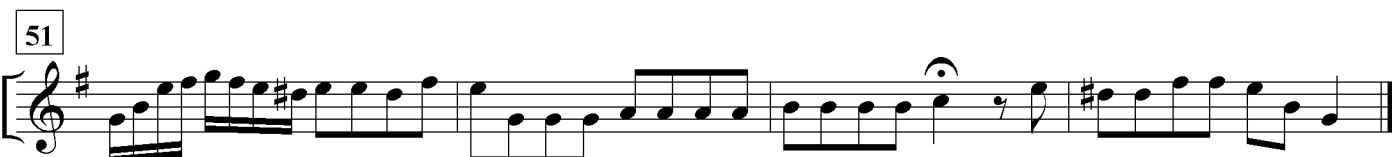
### Responsório III

Allegro



Fim

2.a vez Da Capo 2.o Allegro ao Fim



Da Capo 2.o Allegro ao Fim

# Responsório IV

Allegro



5



10



14



18 Allegro



25



33



40

Verso



Fim

47



51



55



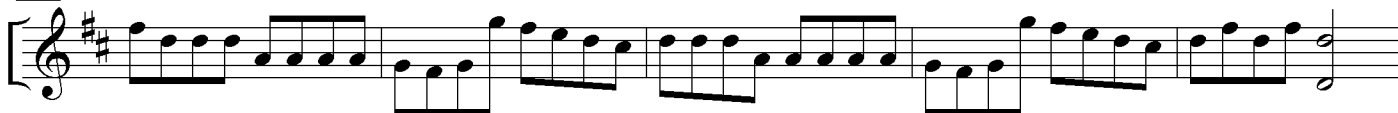
Da Capo 2.o Allegro ao Fim

# Responsório V

**Allegro**



4



9



13



17



20



24

**Allegro**



32



40

**Verso**



**Fim**

49



Da Capo 2.o Allegro ao Fim



# Responsório VI

Allegro

4

8

11

15

19

23

28

33

39

45

Fim

2.a vez Da Capo 2o. Allegro ao Fim

Da Capo 2.o Allegro ao Fim

# Responsório VII

Allegro

Musical notation for the first system of the Responsório VII, measures 1-32. The piece is in 3/4 time, key of B-flat major, and marked Allegro. The notation consists of a single melodic line on a treble clef staff. Measure numbers 8, 13, 19, 24, and 29 are indicated in boxes on the left side of the staff.

Allegro

Musical notation for the second system of the Responsório VII, measures 33-67. The piece is in 3/4 time, key of B-flat major, and marked Allegro. The notation consists of a single melodic line on a treble clef staff. Measure numbers 40, 47, 54, and 61 are indicated in boxes on the left side of the staff. The system concludes with a double bar line and a 3/4 time signature.

Fim

Verso

Musical notation for the third system of the Responsório VII, measures 68-73. The piece is in 3/4 time, key of B-flat major, and marked Verso. The notation consists of a single melodic line on a treble clef staff. Measure numbers 74 and 74 are indicated in boxes on the left side of the staff. The system concludes with a double bar line and a fermata over the final note.

Da Capo 2.o Allegro ao Fim