

Ave Maria Stella del Celi: Barbieri.

Basso Soprano:

Largo. Ave Maria

Stella Dei mater alma

Celi portas felix

Esatto voce
 Celi felix Celi

por = = ta sumens

illud ave Sabot = =

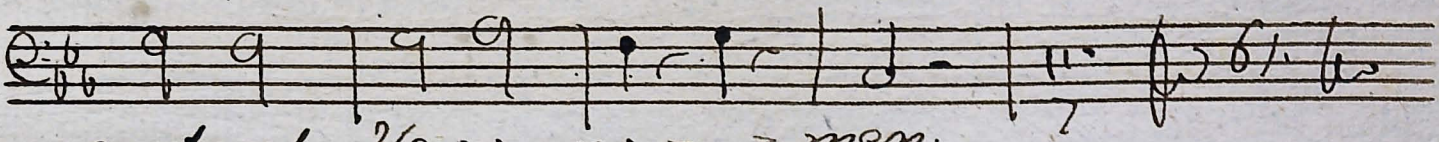
elij Sabot = elij ore

funda nos in

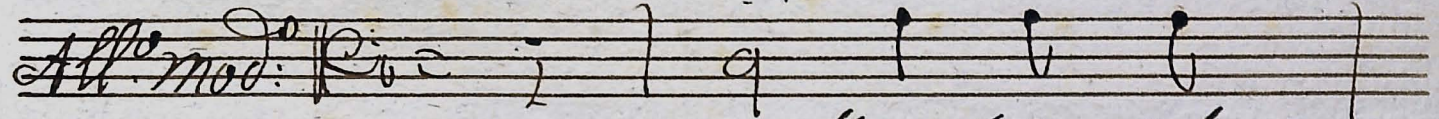
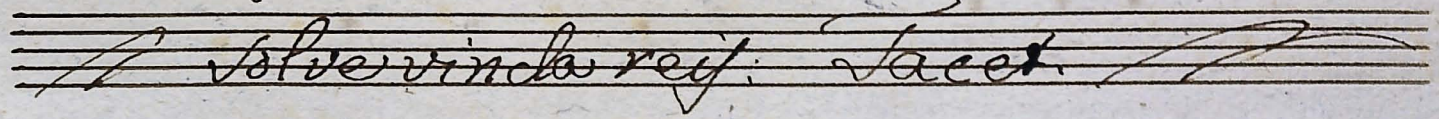
pa = ce mutans Here

no = = = men

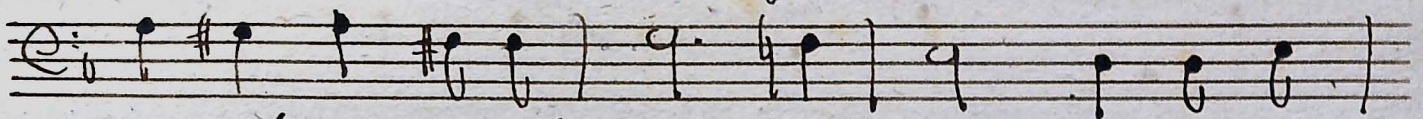
9/7



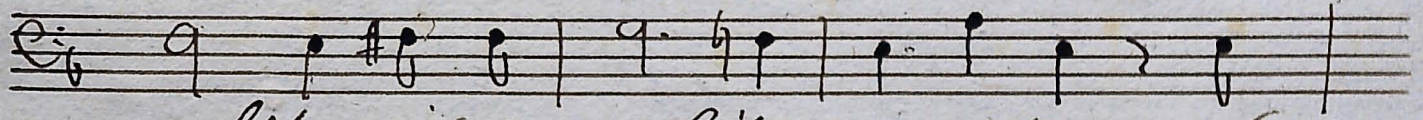
mutans Heros no = = men.



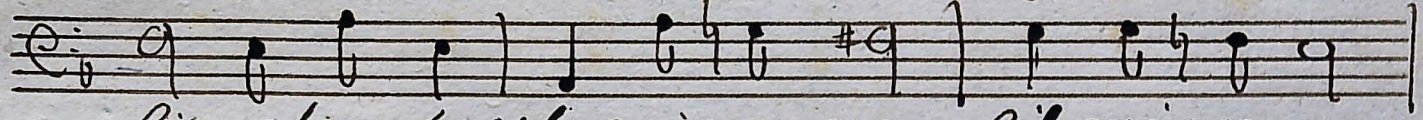
monstra se ef = =



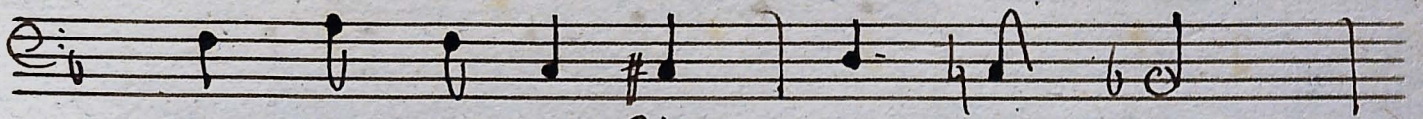
ve matrem sumat per se preces qui pro



nobis qui pro nobis na = tus fu = =



lit esse tuus qui pro no = bis qui pro no =



bis qui pro nobis na = = = =



tus tulit esse tuus qui pro



nobis na = tus tulit esse esse



tu = us.

Virgo singularis: Tacet.

Andante *5* *Vitae* *Sancti* *Deo* *patris*

Summo *Christo* *deus* *Spiritus*

Sancto *tribus* *honor* *a = nus*

amen *amen* *amen*

amen *a = men* *amen* *a =*

= = = men *a = men* *a = =*

men. *5.* *the* *29.* *the*

Sancti Deo.