

Ave Maria Stella. D. Sig. Barbieri

4/6
6/8

Organo

Handwritten musical notation on a five-line staff. It begins with the tempo marking "Largo." and the key signature of two flats (B-flat and E-flat). The first measure contains a whole note chord. Dynamic markings include "pno" and "f".

Handwritten musical notation on a five-line staff. It continues the piece with a melodic line. A dynamic marking of "pno" is present. The tempo marking "Largo." is written above the staff.

Handwritten musical notation on a five-line staff. It features a melodic line with a dynamic marking of "pno".

Handwritten musical notation on a five-line staff. It includes a melodic line with various rhythmic values and dynamic markings.

Handwritten musical notation on a five-line staff. It continues the melodic development with dynamic markings.

Handwritten musical notation on a five-line staff. It features a melodic line with dynamic markings.

Handwritten musical notation on a five-line staff. It includes a melodic line with dynamic markings.

Handwritten musical notation on a five-line staff. It features a melodic line with dynamic markings.

Handwritten musical notation on a five-line staff. It includes a melodic line with dynamic markings.

Handwritten musical notation on a five-line staff. It features a melodic line with dynamic markings.

pno

Volte

Handwritten musical notation on a five-line staff. The key signature has two flats (B-flat and E-flat). The time signature is 3/4. The notation includes quarter notes, eighth notes, and rests. Above the staff, there are handwritten annotations: $\frac{5}{3}$, 66 , $\frac{5}{3}$, $\frac{5}{3}$, $\frac{6}{5}$, $\frac{5}{3}$, and $\frac{5}{3}$.

Handwritten musical notation on a five-line staff. The key signature has two flats. The notation includes quarter notes and rests. Above the staff, there are handwritten annotations: 9 and $\frac{6}{3}$. A dynamic marking no is written below the staff.

Handwritten musical notation on a five-line staff. The key signature has two flats. The notation includes quarter notes and rests. Above the staff, there are handwritten annotations: $\frac{6}{4}$, 7 , and 5 .

Handwritten musical notation on a five-line staff. The key signature has two flats. The notation includes quarter notes, eighth notes, and rests. Above the staff, there are handwritten annotations: $\frac{5}{3}$, 7_5 , $\frac{6}{3}$, $\frac{5}{3}$, and 2_5 .

Handwritten musical notation on a five-line staff. The key signature has two flats. The notation includes quarter notes and rests. Above the staff, there are handwritten annotations: $\frac{5}{3}$, 6 , 5 , $\frac{5}{3}$, $\frac{5}{3}$, $\frac{6}{4}$, and $\frac{6}{3}$.

Handwritten musical notation on a five-line staff. The key signature has two flats. The notation includes quarter notes and rests. Above the staff, there are handwritten annotations: $\frac{5}{3}$, 6 , $\frac{5}{3}$, $\frac{5}{3}$, $\frac{6}{5}$, and $\frac{5}{3}$.

Handwritten musical notation on a five-line staff. The key signature has two flats. The notation includes quarter notes and rests. Above the staff, there are handwritten annotations: $\frac{5}{3}$, 7_5 , $\frac{5}{3}$, 6_5 , and $\frac{5}{3}$. A dynamic marking no is written below the staff.

Handwritten musical notation on a five-line staff. The key signature has two flats. The notation includes quarter notes and rests. Above the staff, there are handwritten annotations: $\frac{5}{3}$, $\frac{6}{5}$, $\frac{6}{5}$, and $\frac{6}{5}$.

Handwritten musical notation on a five-line staff. The key signature has two flats. The notation includes quarter notes and rests. Above the staff, there are handwritten annotations: $\frac{6}{3}$ and no . A dynamic marking no is written below the staff. The text *Sfu. f. fasto solo no* is written across the staff.

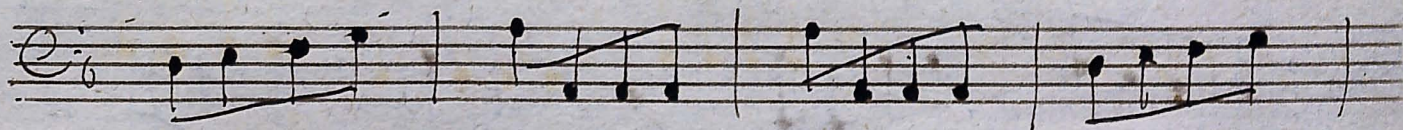
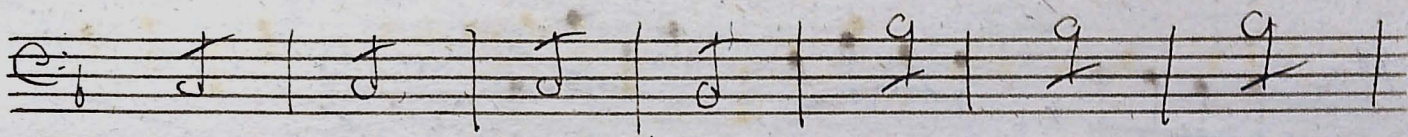
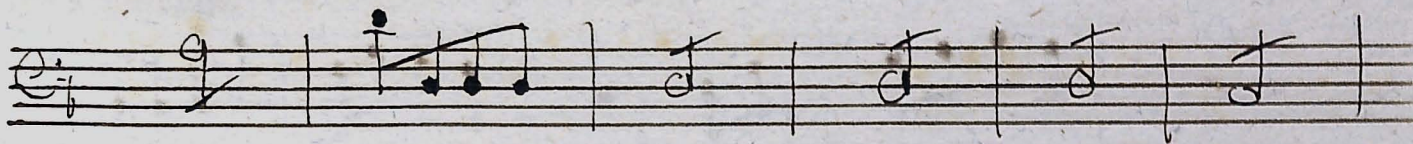
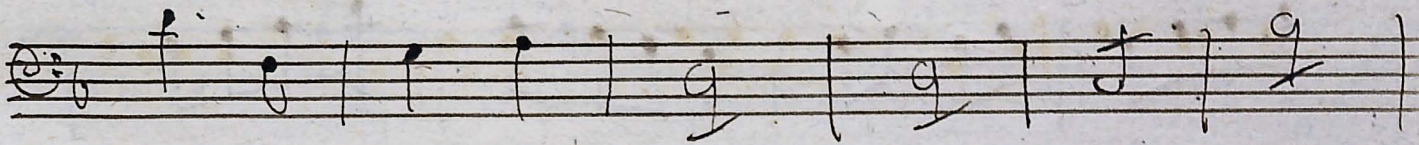
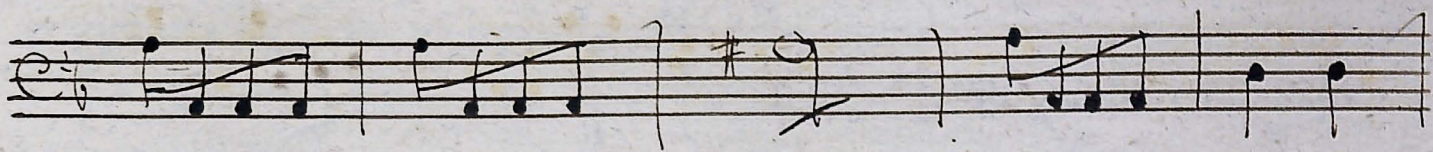
Handwritten musical notation on a five-line staff. The key signature has two flats. The notation includes quarter notes and rests. A dynamic marking no is written below the staff.

Solve vincha.

tafto-solo

Tempo giusto

Volti



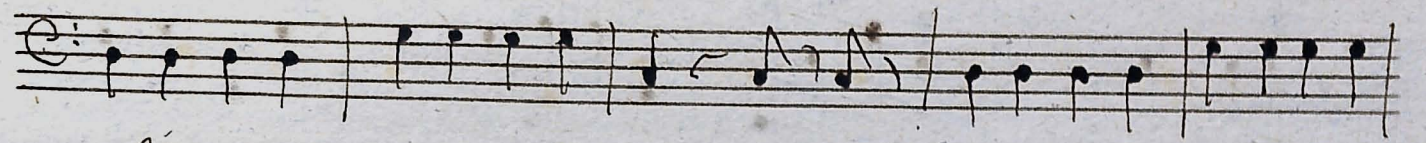
Monstruosa e sp.

Handwritten musical score for the piece "Monstruosa e sp.". The score is written on ten staves in G major (one sharp) and 2/4 time. The tempo is marked "All. Mod.". The notation includes various rhythmic values, accidentals, and dynamic markings. Above the staves, there are handwritten annotations such as "5/4 #3", "4b3", "2", "63", "6 5 #4/3", "2 #6", "6 #4/2", "7 #", "6 3", "#", "2 6", "#", "5/4 #2", "6 3", "6", "2 #6", "6 5", "6 3", "#", "5/4 #3", "5/4 #3", and "2 2".

Virgo singularis

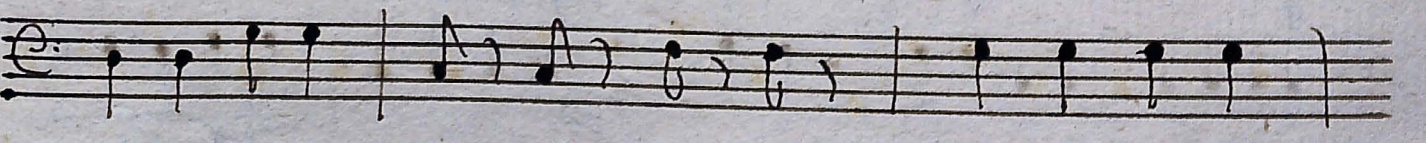
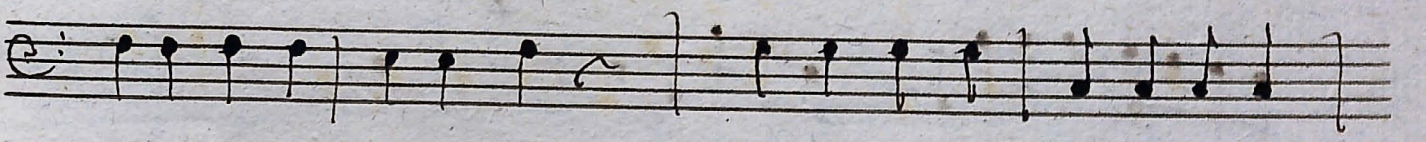
Handwritten musical score for the piece "Virgo singularis". The score is written on two staves in G major (one sharp) and 6/4 time. The tempo is marked "Largo Cantabile". The notation includes various rhythmic values and dynamic markings. Above the staves, there are handwritten annotations such as "7/8", "6/4", "3/8", "3/8", "5/8", "6/4", "4/2", "6/4", and "tasto solo".

no Wolff



$\frac{6}{4}$ > #

ritto solo



Sit laus Deo.

Andante