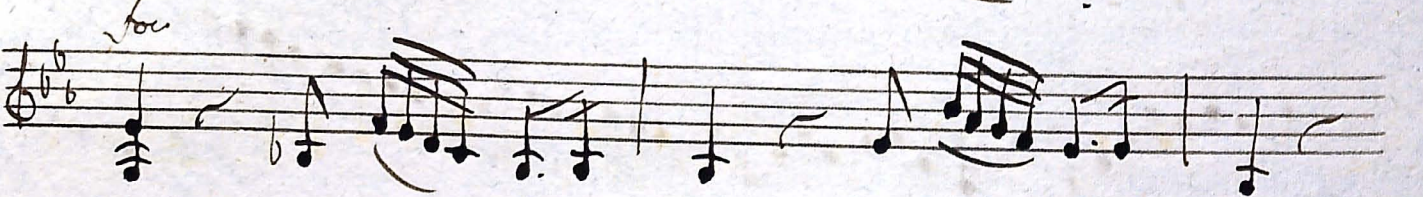


Lauda Jerusalem. w 3. del Sig. Barbieri.

Violino Secondo Obblto.

*And. sosten.*

*Volta*



*for*

Handwritten musical score for the first section, consisting of five staves of music in G major and 3/4 time. The notation includes various rhythmic values such as eighth and sixteenth notes, and rests.

*Qui annunciat.*

*Andante*

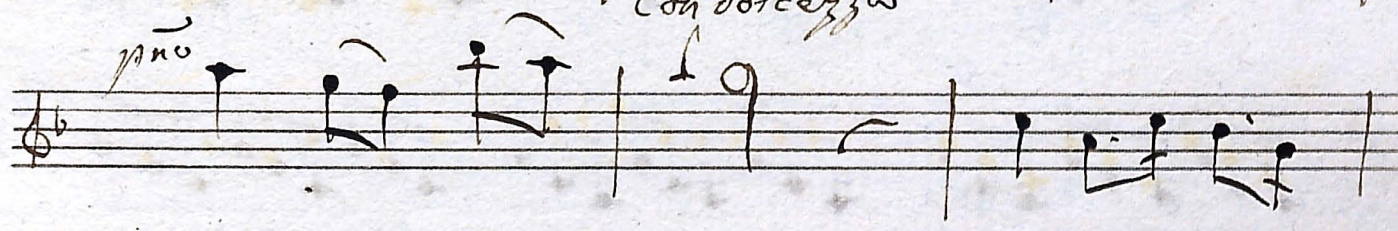
Handwritten musical score for the second section, consisting of five staves of music in G major and 3/4 time. The tempo is marked "Andante". The notation features a mix of quarter and eighth notes.

*Volta*

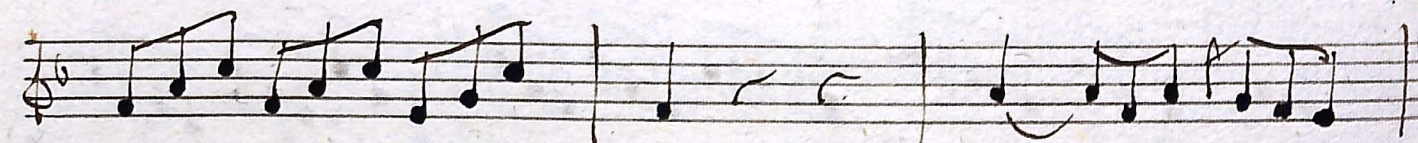
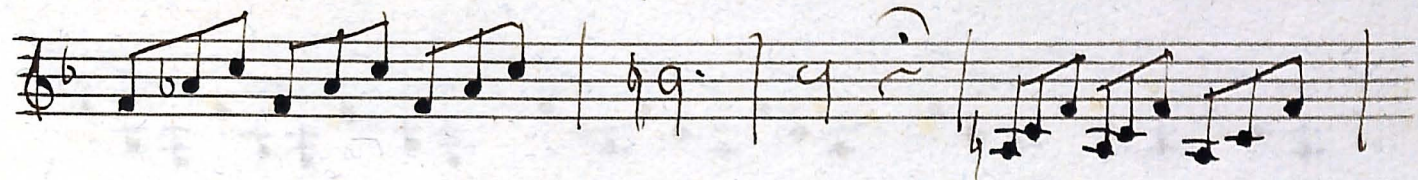
Handwritten musical notation on four staves. The first staff begins with a treble clef and a key signature of one flat (Bb). The music consists of a sequence of notes, including quarter, eighth, and sixteenth notes, with some rests. The second and third staves continue the melodic line with similar rhythmic patterns. The fourth staff concludes with a double bar line and a fermata over the final note.

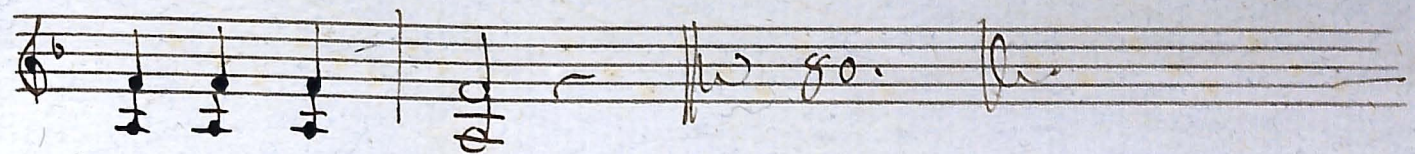
*Gloria.*

Handwritten musical notation for a section titled "Cantabile". The notation is written on seven staves in treble clef with a key signature of one flat (Bb) and a 3/4 time signature. The music features a continuous melodic line with frequent eighth and sixteenth notes, often beamed together. There are several triplets indicated by a '3' over a group of notes. The section concludes with a double bar line and a fermata over the final note. Performance markings include *pmo* (piano molto) above the fourth staff and *for* (forte) above the seventh staff.

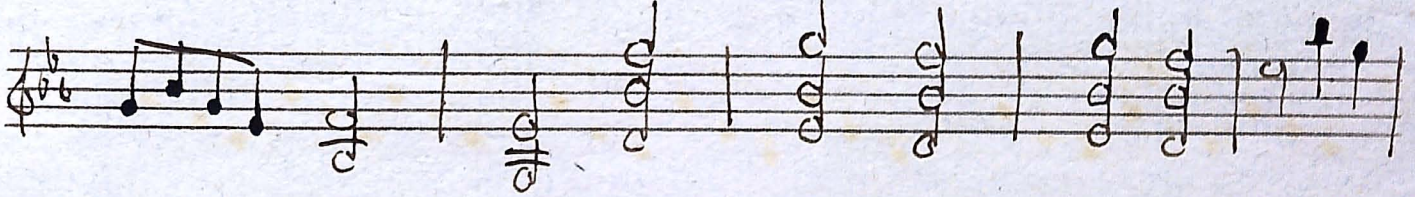
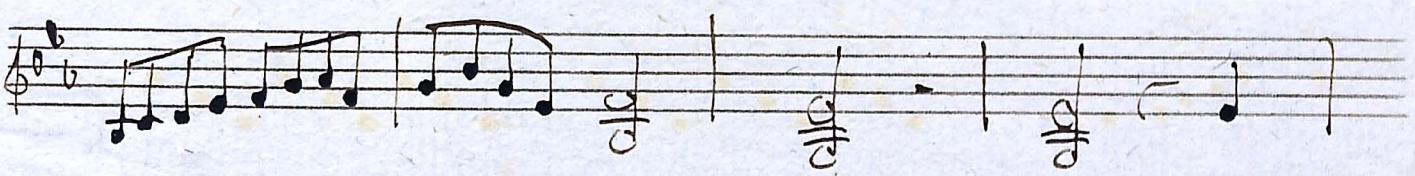
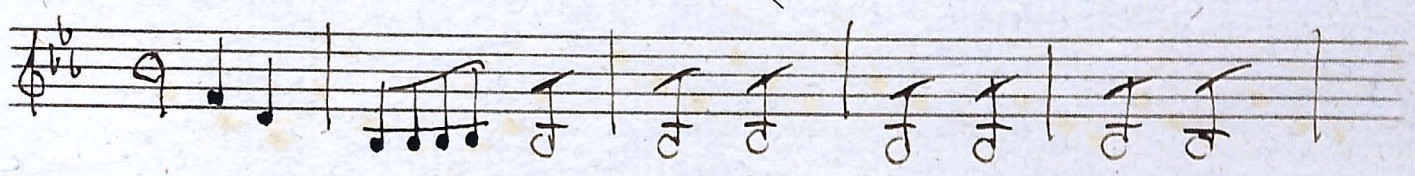
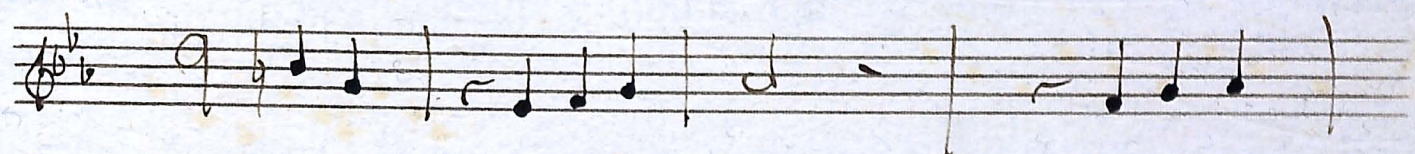
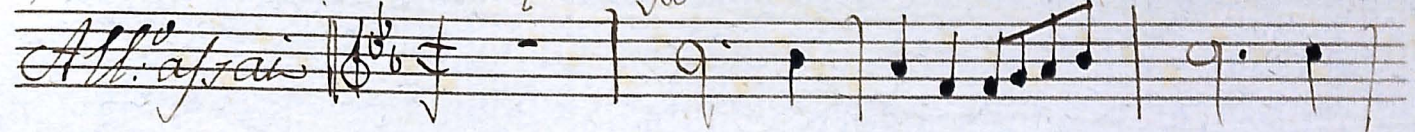


Volkis





*Sicut erat.*



*Sanctus*