

Bass

Tabasco



Overture from Burlesque Opera

BASS

"TABASCO"

No 53.

G. W. CHADWICK.

All<sup>o</sup> molto

*f*

1 Andante Cello *p* pizz. *p* Andante *p* arco

*f*

*p* *cresc.* *f* *ff* All<sup>o</sup> molto *ff*

*fp* *sf* *sf* *f* *sf* *fp* *f* *fp* *f*

*f* *fp* *cresc.* *ff* *sf*

*sf* *rall.* *ff* *Cad.* *p* Allegro Cello

*f* *p*

*ff* *sf* *sf* *sf* *sf* *sf*

Animato *f*

*ff* *ff*



BASS

ff

pizz. p Andante pizz. p

arco f p

cresc. f ff rall. dim. Tempo di Valse pp

cresc.

ff 1 ff

Schnell. ff accel

Moderato pp P sempre accel. e cresc.

f ff

sf

Molto vivace 1 fp cresc. ff

f

ff 1 2 1 ff

ff

ff

ff

ff

BASS.

"TOBACCO."

ACT I.

No. 1. — CHORUS

*Allegro Animato.* 2/4  $\sharp \sharp \sharp$   $\text{p}$   $\text{cresc-endo molto}$

*f.* *mf.*

*f.*

*PIANO:* *ARCO:* *PIANO:*

*ARCO:* *PIANO:* *sf.* *mf.* *ARCO:*

*f.* *mf.* *f.*

*f.*

*f.*

*f.*

*PIANO:* *f.*

*f.*



all

*Pizz.*

*ARCO:* *f.*

*p.*

*f.*

*Pizz.*

*f.*

(if no cello:)

*f.* *ff.*

*ARCO:*

*f.*

*Poco meno mosso:*

*Pizz.*

*f.* *Pizz.*

*ARCO:*

*p.*

*Pizz.*

*cresc.* *ff.* *racc.*

*ARCO:*

*ARCO:*

*p.*

*Pizz:* *ARCO:* *rit.*

*p. cresc:* *molto:* *ARCO:* *Pizz:* *f:*

*cello:* *ARCO:* *Pizz:* *ARCO:*

*p.* *Tempo ma piu lento:*

*colla voce:* *p.* *sempre cresc:*

*p.* *cresc-endo* *molto:*

*ff.* *ff.*

*ff.*

*ff.* *Pizz:*

*Solo:*

*p.* *pp.* *FINE*



No. 2.

"LOLA'S SONG;" (ON SHEET.)

No. 2A.

"MARCH A LA TURQUE."

Handwritten musical score for "MARCH A LA TURQUE." The score is written on three staves. The first staff begins with a treble clef, a key signature of one flat (B-flat), and a 2/4 time signature. The first two measures are marked *mf.* and contain rhythmic notation. A repeat sign follows, with the second measure also marked *mf.*. The second staff continues the melody with various notes and rests, including a trill in the second measure. A second trill is marked "(2nd time: f.)" and *f.*. The third staff starts with a trumpet part, indicated by "(TRUMPET.)" and a 3/4 time signature. It concludes with the word "ATTACCA." written in a stylized, bold font.

# No. 3.

1101

## ENTRANCE AND SONG;

## "PASHA."

*Allegro:* 3/4 #D

*Smare.* (cello:) *crese:* *voc:* *f.* *p.* *f.* *sf.* *p.* *f.* *p.* *sf.* *sf.* *sf.* *f.* *p.* *f.* *sf.* *I.* *Last.* *FINE.* *p.*

Detailed description: The score consists of ten staves of music. The first staff begins with the tempo and key signature. The second staff has a dynamic marking of *f.* and a *p.* marking above it. The third staff includes the handwritten note *Smare.* and dynamic markings *f.*, *sf.*, and *p.*. The fourth staff has a *f.* marking. The fifth staff has a *p.* marking. The sixth staff has three *sf.* markings. The seventh staff has a *f.* marking. The eighth staff has a *sf.* marking. The ninth staff has *f.*, *sf.*, and *I.* markings. The tenth staff concludes with *Last.*, *FINE.*, and a *p.* marking.



# No. 4.

## CHORUS; "READING OF THE MAIL"

*Allegro:*  $\text{2/4}$  *f.*

*f.*

$\text{8}$  *p.*

*rit.* *f.* *f.*

*RECIT.* *atempo:* *PR:* *ARCO:*

*All. ma* *molto:* *f.* *p.* *sf.*

*f.* *Wind:* *PR:* *ARCO:*

*all.  $\frac{3}{4}$  Grazioso:* *PR:* *ARCO:* *p.*

*cresc:* *rit.* *atempo:*

*a tempo:*

Handwritten musical notation on two staves. The first staff begins with a piano (*p.*) dynamic and includes accents (*>*) and a forte (*f.*) dynamic. The second staff includes a *rit.* (ritardando) marking and ends with *a tempo:*. The key signature is one sharp (F#).

*Tempo di Valse*

*RECIT- ad lib.*

*molto Vivace:*

Handwritten musical notation on two staves. The first staff starts with a fortissimo (*sf.*) dynamic and includes a *Tempo di Valse* marking. The second staff includes a *molto Vivace:* marking and a forte (*f.*) dynamic.

Handwritten musical notation on two staves. The first staff begins with a forte (*f.*) dynamic. The second staff continues the melodic line.

Handwritten musical notation on a single staff, featuring a long melodic line with a forte (*ff.*) dynamic marking.

Handwritten musical notation on a single staff. It includes a *Pizz:* (pizzicato) marking, a piano (*p.*) dynamic, and an *ARCO:* (arco) marking. The dynamic changes to forte (*ff.*) and then back to piano (*p.*).

Handwritten musical notation on a single staff, featuring a forte (*ff.*) dynamic and a *Pizz:* marking.

Handwritten musical notation on a single staff, continuing the melodic line.

Handwritten musical notation on a single staff, including a *ARCO:* marking and a forte (*ff.*) dynamic.

Handwritten musical notation on a single staff, ending with a *FINE.* marking. The final notes are highlighted in blue ink.

*FINE.*



811

# No. 4 A.

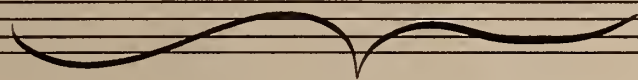
## EXIT.

*Allegro:* *Signal* *f.* *sf.* *sf.*

# No. 5. Song, "GRAND VIZIER."

*Moderato:* *f.* *p.* *Pizz:* *cello:* *arco:* *f.* *f.* *arco:* *p.* *Pizz:* *f.* *arco:* *Encore.* *f.* *arco:* *DANCE.* *mf.* *FINE.*

No. 6.



"MELODRAM AND SONG;"

{ ON SHEET }





# No. 7.

## RECIT. AND SONG.

Recit.: *f. p.*

Allegro: *p.*

Andante: *cresc e accel*

*mod to.* *Encore.* *Song.* *f.*

*I.* *Cello:*

*2da* *f.* *dim:* *p.* *pp.*

*fz.* *p.* *p.* **FINE.**

# No. 7.

## "PASHA'S" ENTRANCE.

marcia:

*mf.*

**FINE.**

# No. 8.

## "MELOS."

*ff.* *dim.*

*p.*

**FINE.**

# No. 9.

## "CHORUS."

*All mod to* *f.*

*ff.*

*p.*

*cresc:* *ff.* *f.* *p.*

**FINE.**

"V. S."



Handwritten musical notation on two staves. The top staff contains a melody with eighth and sixteenth notes. The bottom staff contains a bass line with quarter and eighth notes. The piece ends with a double bar line and the word "FINE" written in all caps.

No. 10.

"SONG" - (ON SHEET)

# No. 107.

marcia:

Handwritten musical notation on a single staff. It begins with a treble clef, a key signature of one flat (B-flat), and a 2/4 time signature. The music consists of several measures of rhythmic patterns, ending with a double bar line and the word "FINE". The dynamic marking *mf.* is present.

# "FINALE" No. 11. Act I.

Handwritten musical notation on a single staff. It begins with a bass clef, a key signature of one flat (B-flat), and a 12/8 time signature. The music starts with a *p.* dynamic marking and includes a *Fizz.* marking above the staff.

Handwritten musical notation on a single staff, continuing the piece with rhythmic patterns.

Handwritten musical notation on a single staff, featuring a *f.* dynamic marking and a crescendo hairpin.

Handwritten musical notation on a single staff, starting with a key signature change to two sharps (D major) and a *p.* dynamic marking.

Handwritten musical notation on a single staff, continuing the rhythmic development.

Handwritten musical notation on a single staff. It includes a *Fizz.* marking, a *f.* dynamic marking, and the instruction *arco: Molto Vivace.*

Handwritten musical notation on a single staff, featuring a *f.* dynamic marking and a crescendo hairpin.

Handwritten musical notation on a single staff, including a *f.* dynamic marking and a crescendo hairpin.

Handwritten musical notation on a single staff, featuring a *f.* dynamic marking and a crescendo hairpin.

Handwritten musical notation on a single staff, including a *sf.* dynamic marking, a *p.* dynamic marking, and a *f.* dynamic marking.

*v. S. Quick.*



Handwritten musical score for the first system, consisting of four staves. The notation includes various notes, rests, and dynamic markings such as *ff.* and *sf.* There are also some slanted lines and accents above notes.

"Encore". *Andante con moto*

(Cadz. cl.)

Handwritten musical score for the second system, consisting of eight staves. The notation includes various notes, rests, and dynamic markings such as *p*, *mf.*, *f.*, and *cresc.* There are also some slanted lines and accents above notes.

*cresc molto:*

*last*

End of act I.

# Act II.

## No. 1. — — "CHORUS"

*Moderato.* *all.<sup>o</sup> = *mod.to.** *f.* *mf.* *sf.* *mf.* *f.* *sf.* *p.* *ff.* *sf.* *ff.*

A handwritten musical score for a chorus piece. It consists of six staves of music. The first staff is marked 'Moderato.' and features a treble clef, a key signature of two flats, and a 4/4 time signature. The music includes various dynamics such as *mf.*, *f.*, *sf.*, *p.*, and *ff.*, along with performance directions like *all.<sup>o</sup> = mod.to.* and *arco:*. There are also markings for *arco:* and *arco:* on the second and fourth staves. The piece concludes with a double bar line and the word 'FINE' written in large, bold letters.

## No. 14.

## "EXIT"

*f.* *ff.* *f.* *ff.*

A handwritten musical score for an exit piece. It consists of two staves of music. The first staff is marked with a treble clef, a key signature of two flats, and a 4/4 time signature. The music includes dynamics such as *f.* and *ff.*. The piece concludes with a double bar line and the word 'FINE' written in large, bold letters.



# No. 2.

## "DUET"

*Andante con moto.* 3/4

*mf.* *f.* I. Last: FINE.

# No. 3.

## "QUARTET"

*Tempo Bolero.* 3/4

*f.* *p.* *FRCO:* *a tempo:* *sf.* *p.* *piu lento:* *f.* *cresc:*

ARCO:  
7

Musical score for the first section, consisting of five staves. The notation includes various rhythmic values and dynamics. A **f.** dynamic marking is present. The section concludes with a double bar line and the word **FINE.** Below the staves, there are handwritten annotations: "DANCE." and "Tempo I<sup>mo</sup>:".

~~NO. 3A.~~ 18 NO. 3A.

"ATTACCA" -  
NO. 3A.

Musical score for the second section, consisting of three staves. The tempo is marked **Allegretto:** in 4/4 time. The notation includes dynamics such as **pp.** and **rit.** The section ends with the marking **atempo:**.

Cello:

Musical score for the third section, consisting of one staff. The tempo is marked **Vivace:**. The notation includes dynamics **pp.** and **sf.** and concludes with a double bar line and the word **FINE.**

**f.** DANCE. **sf.** "ATTACCA" - 3B.



18.

~~No 3<sup>B</sup>~~ 19

*Moderato*: 9/8 *p.*

Musical staff with notes and rests.

Musical staff with notes and rests.

*p.*

Musical staff with notes and rests.

*Ad libit. mosso*

*p.*

Musical staff with notes and rests.

*Vivace.*

*DANCE*

Musical staff with notes and rests.

Musical staff with notes and rests, including first and second endings.

~~No 3<sup>C</sup>~~ 20

*Andante*: 3/4 *pp.*

Musical staff with notes and rests.

*pp.*

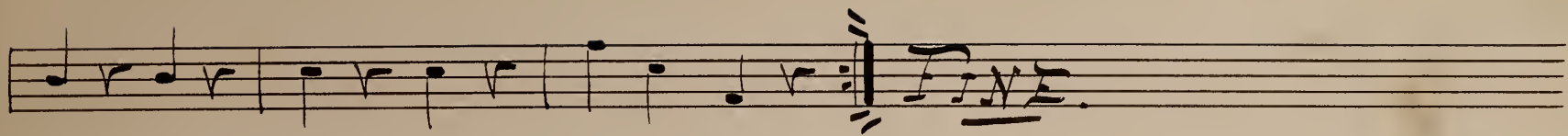
Musical staff with notes and rests.

*Allegro*

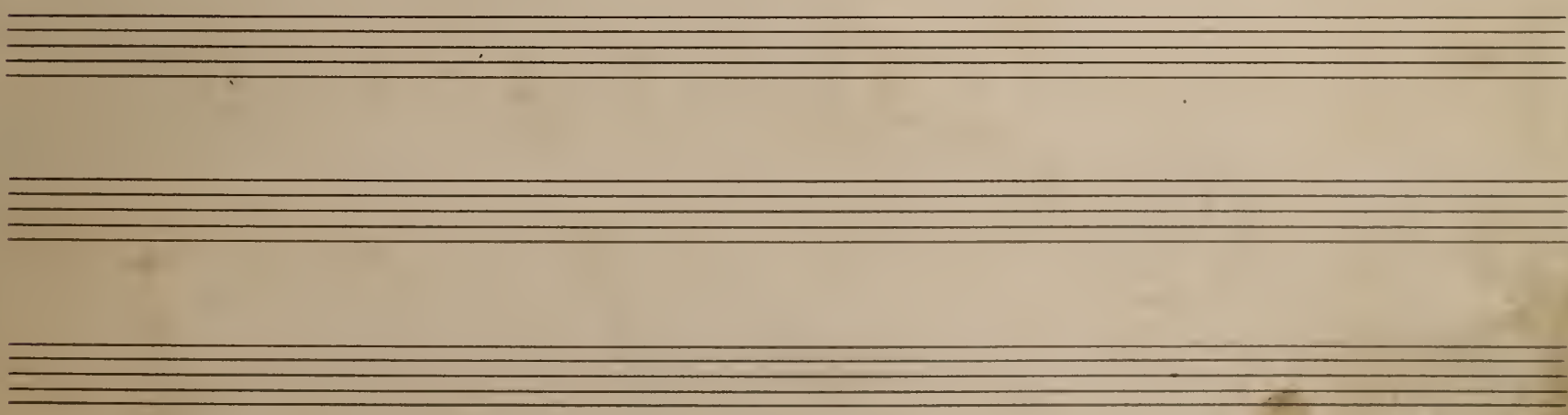
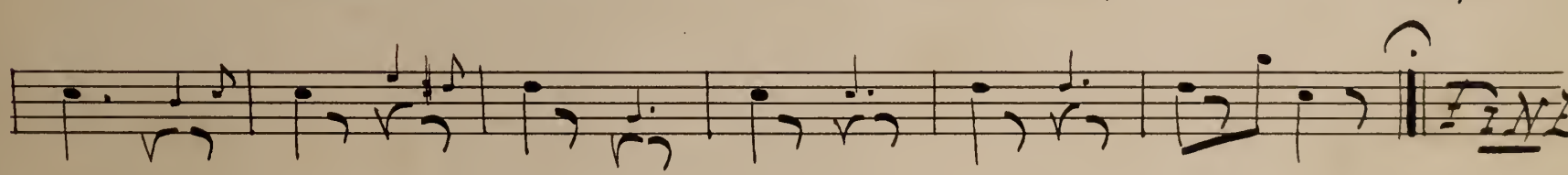
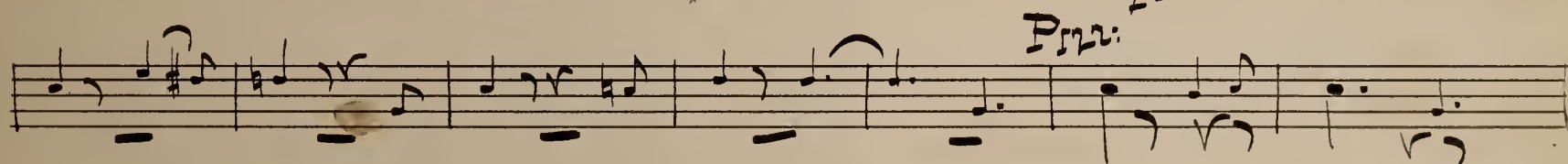
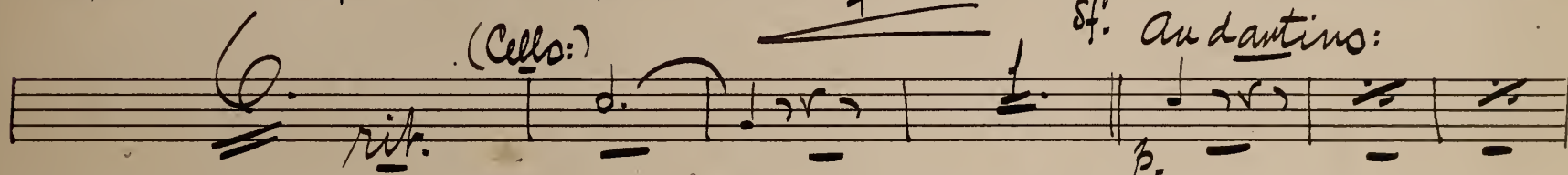
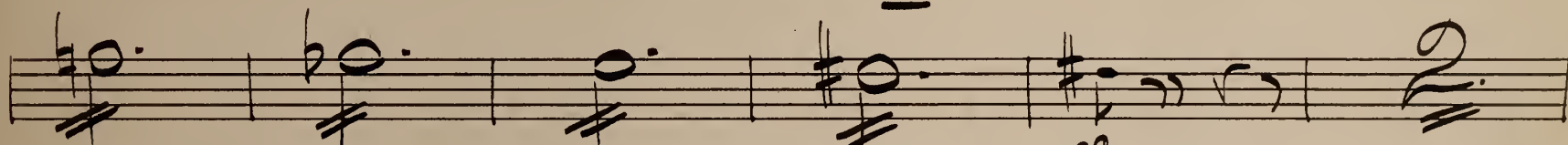
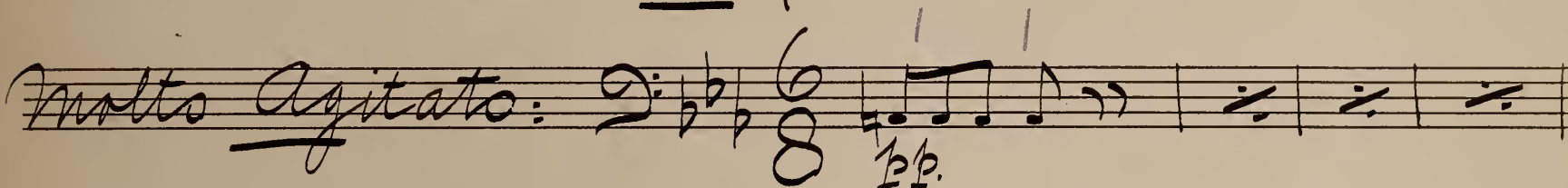
Musical staff with notes and rests.

*rit.*

*p. DANCE*

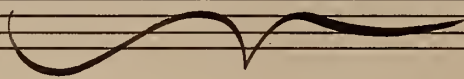


No. 4.  
"MELODRAM."





No. 5.

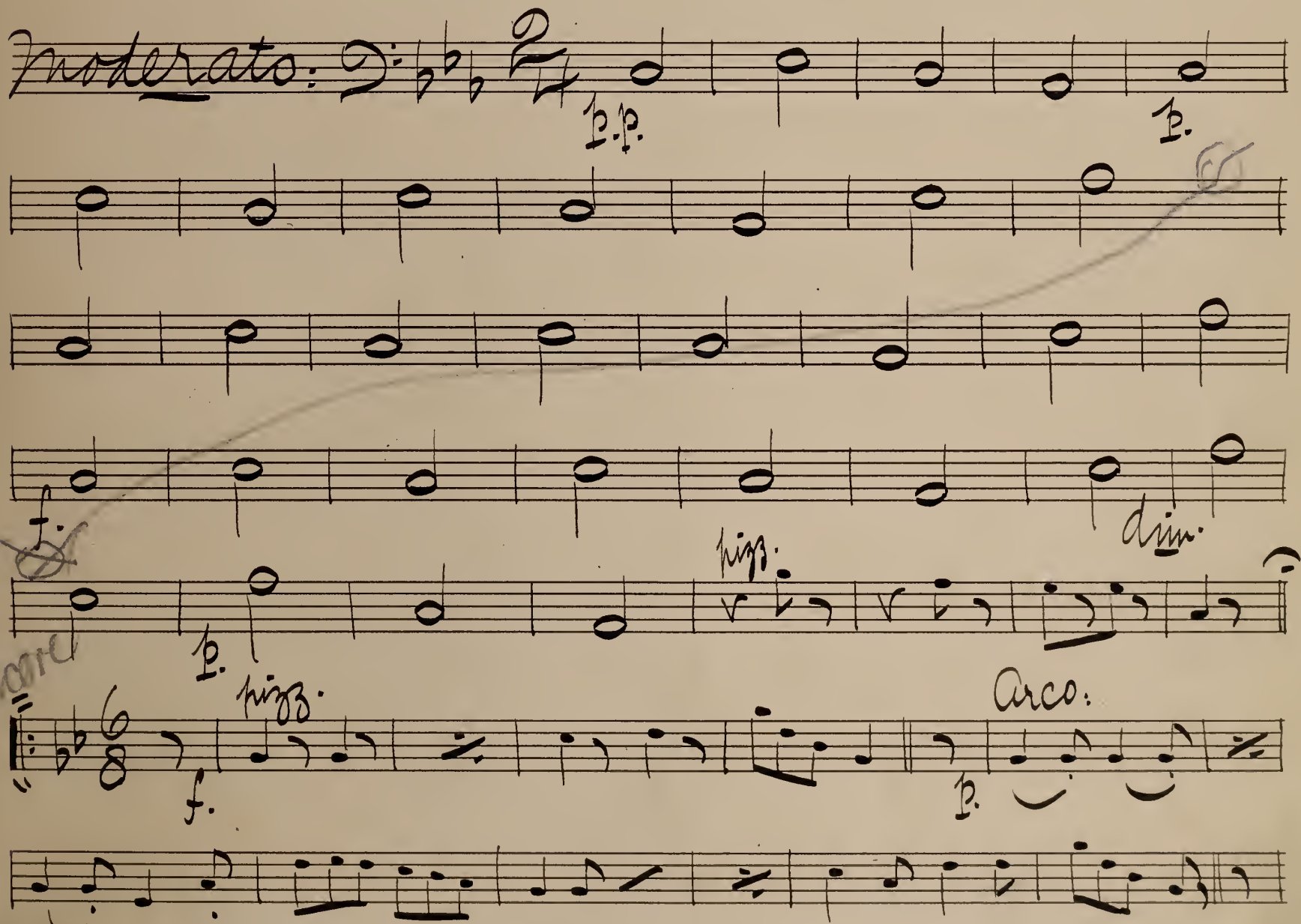


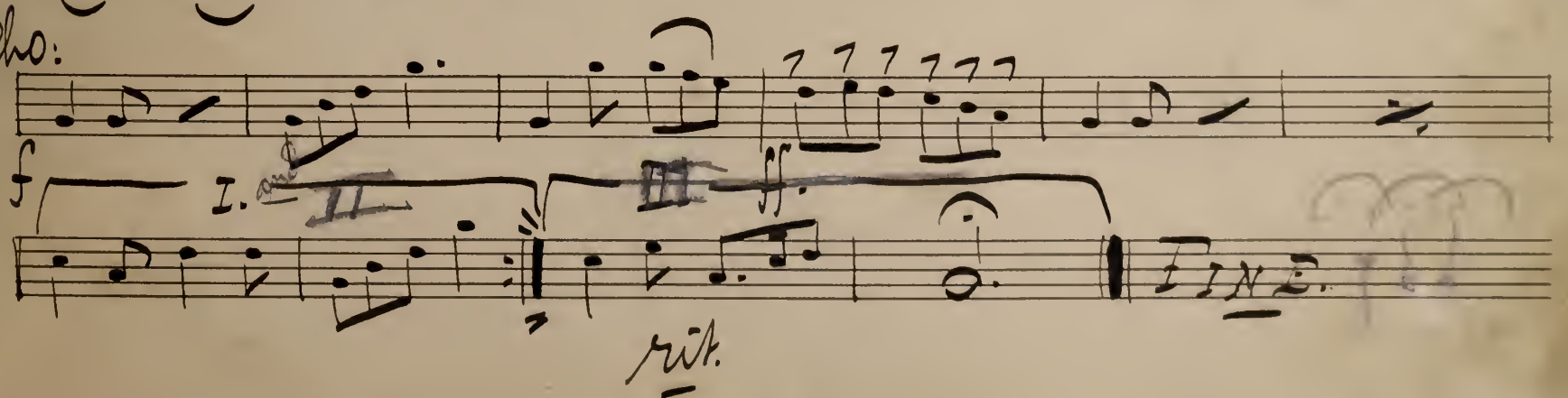
"Chorus" - on Sheet.

# No. 6.

## Long & Chorus.

### "Greet the Old Man" etc.

*Moderato:* 

*Cho:* 



# No 7 = "Ballet"

(On extra sheets.)

# No 8. Song "Grand Viz:

Violin 1  $\text{C}:\sharp\sharp$   $\text{3g}$  *f.* *Vice* *p.*

*pizz* *p.* *Arco* *p.* *Colla Voce* *rit* *Allegro* *p.*

*pizz* *p.* *Arco* *p.* *Colla Voce* *rit* *Allegro* *p.*

*pizz* *p.* *Arco* *p.* *Colla Voce* *rit* *Allegro* *p.*

*pizz* *p.* *Arco* *p.* *Colla Voce* *rit* *Allegro* *p.*

*pizz* *p.* *Arco* *p.* *Colla Voce* *rit* *Allegro* *p.*

*pizz* *p.* *Arco* *p.* *Colla Voce* *rit* *Allegro* *p.*

*pizz* *p.* *Arco* *p.* *Colla Voce* *rit* *Allegro* *p.*

*pizz* *p.* *Arco* *p.* *Colla Voce* *rit* *Allegro* *p.*

Basso

Act II No. 1. Chorus

19: #3 Pizz

arco

Arco

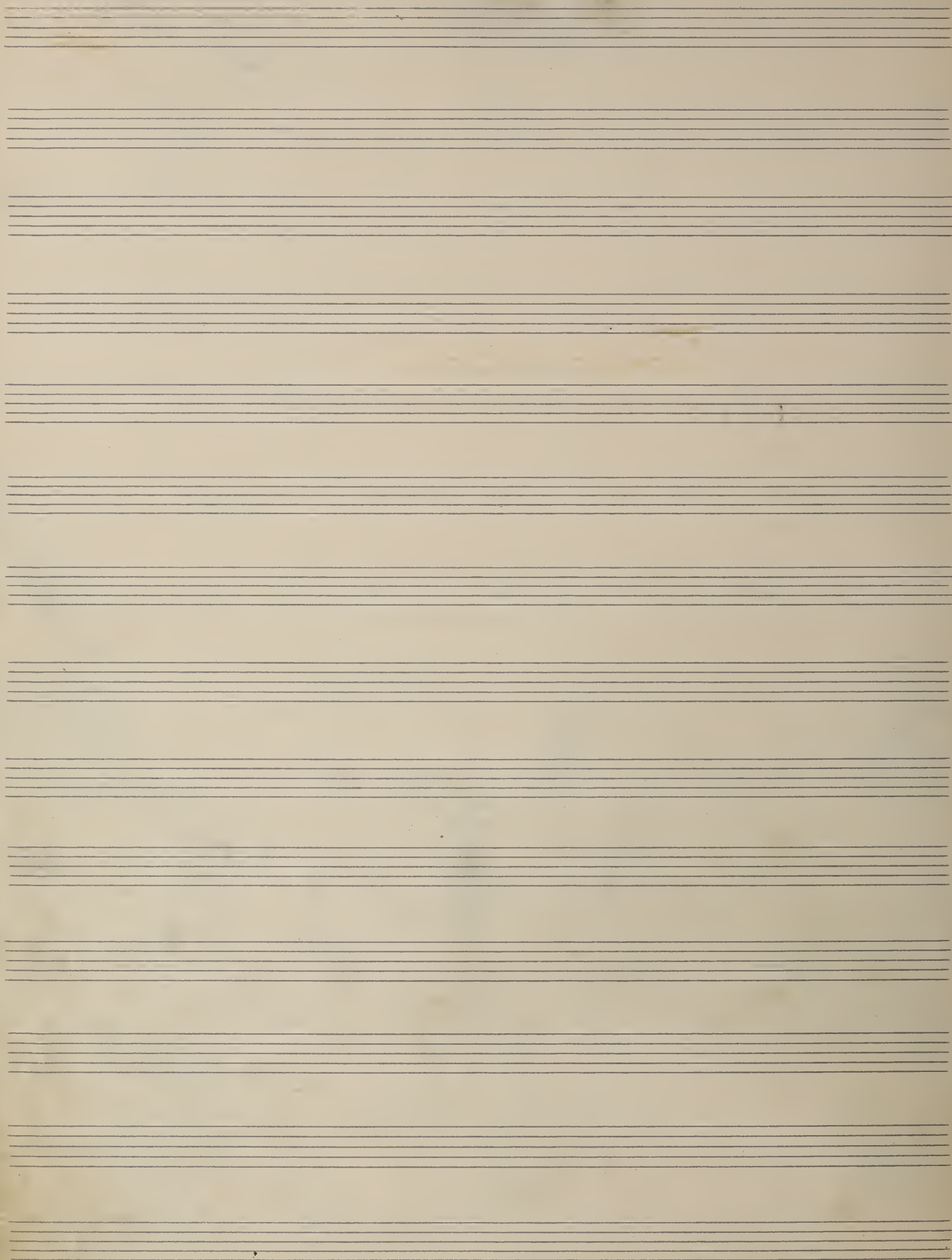
Pizz

Arco

pp

Pizz



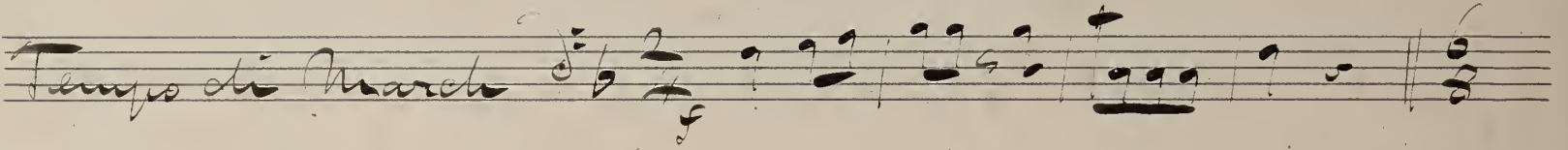


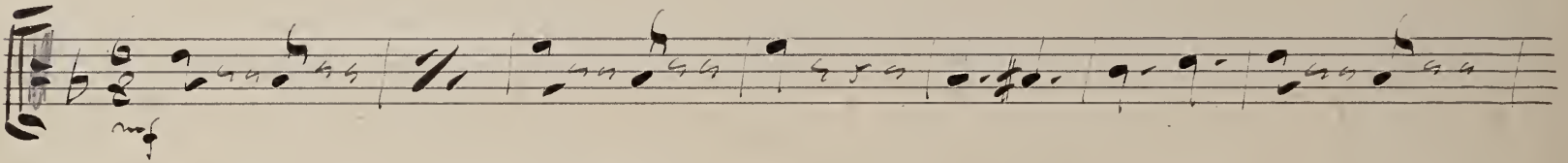
Bass

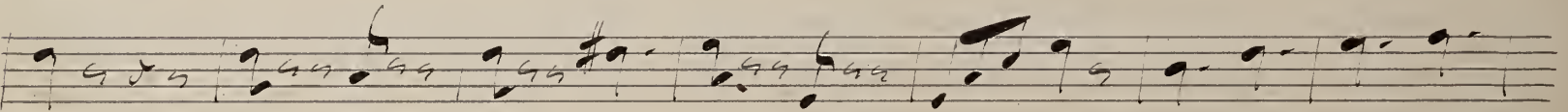
Finale Act 2nd

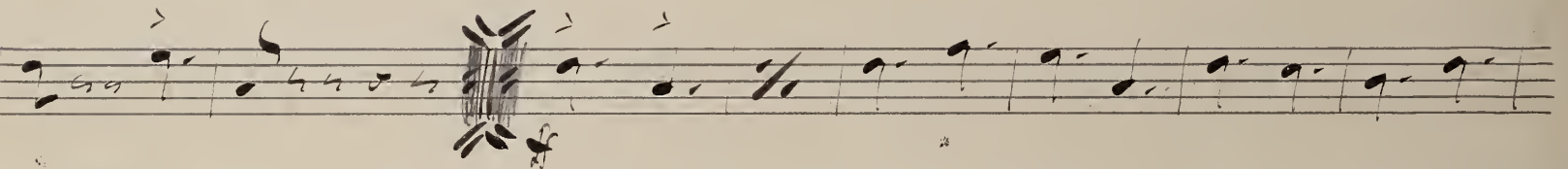


Finale ich Zueh

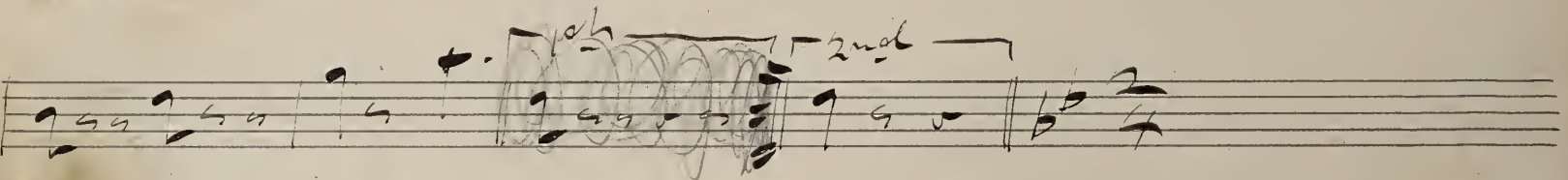
Tempo di March 

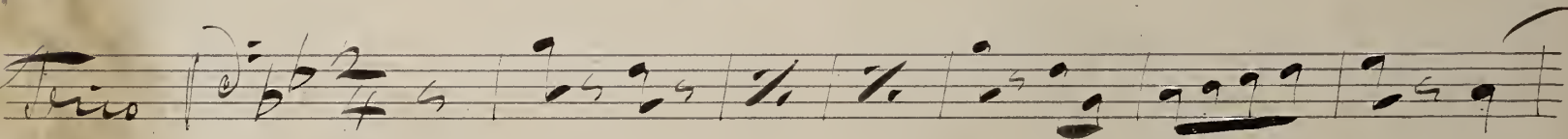








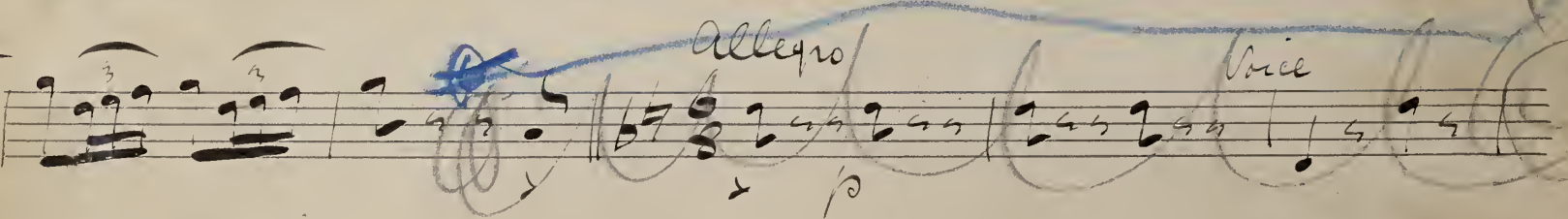


Trio 









Allegro

Voice

*Moderato*

*Allegro (alla breve)*

Handwritten musical notation on a single staff, featuring a treble clef, a key signature of one sharp (F#), and a 6/8 time signature. The music consists of a series of eighth and sixteenth notes, with dynamic markings of *f* (forte) and *ff* (fortissimo).

Handwritten musical notation on a single staff, continuing the melody from the previous staff. It includes dynamic markings of *f* and *ff*.

Handwritten musical notation on a single staff, ending with a 3/8 time signature. The music continues with eighth and sixteenth notes.

Handwritten musical notation on a single staff, starting with a 3/8 time signature. It features a series of eighth notes with dynamic markings of *f*, *ff*, and *pp* (pianissimo). The word *Allegro* is written above the staff.

Handwritten musical notation on a single staff, continuing the eighth-note pattern. The word *Quick* is written to the left of the staff.

Handwritten musical notation on a single staff, featuring a series of eighth notes. The word *arco* is written above the staff.

Handwritten musical notation on a single staff, continuing the eighth-note pattern. The word *arco* is written above the staff.

Handwritten musical notation on a single staff, featuring a series of eighth notes. The word *arco* is written above the staff.

Handwritten musical notation on a single staff, continuing the eighth-note pattern. The word *arco* is written above the staff.

Handwritten musical notation on a single staff, continuing the eighth-note pattern. The word *arco* is written above the staff.

Handwritten musical notation on a single staff, continuing the eighth-note pattern. The word *rall.* (rallentando) is written below the staff.

Handwritten signature or initials at the bottom right of the page.



*con moto*

*(p. 1st. fortissimi)*

*Tutti di Valor*

*cresc*

*rit* ~~~~~ *a tempo*

*The End.*

# Bass.

# Entre Act.

*Andante con moto*  $\text{C}:\#$   $\frac{12}{8}$  *Pizz* *p.*

*Arco.* *pp.*

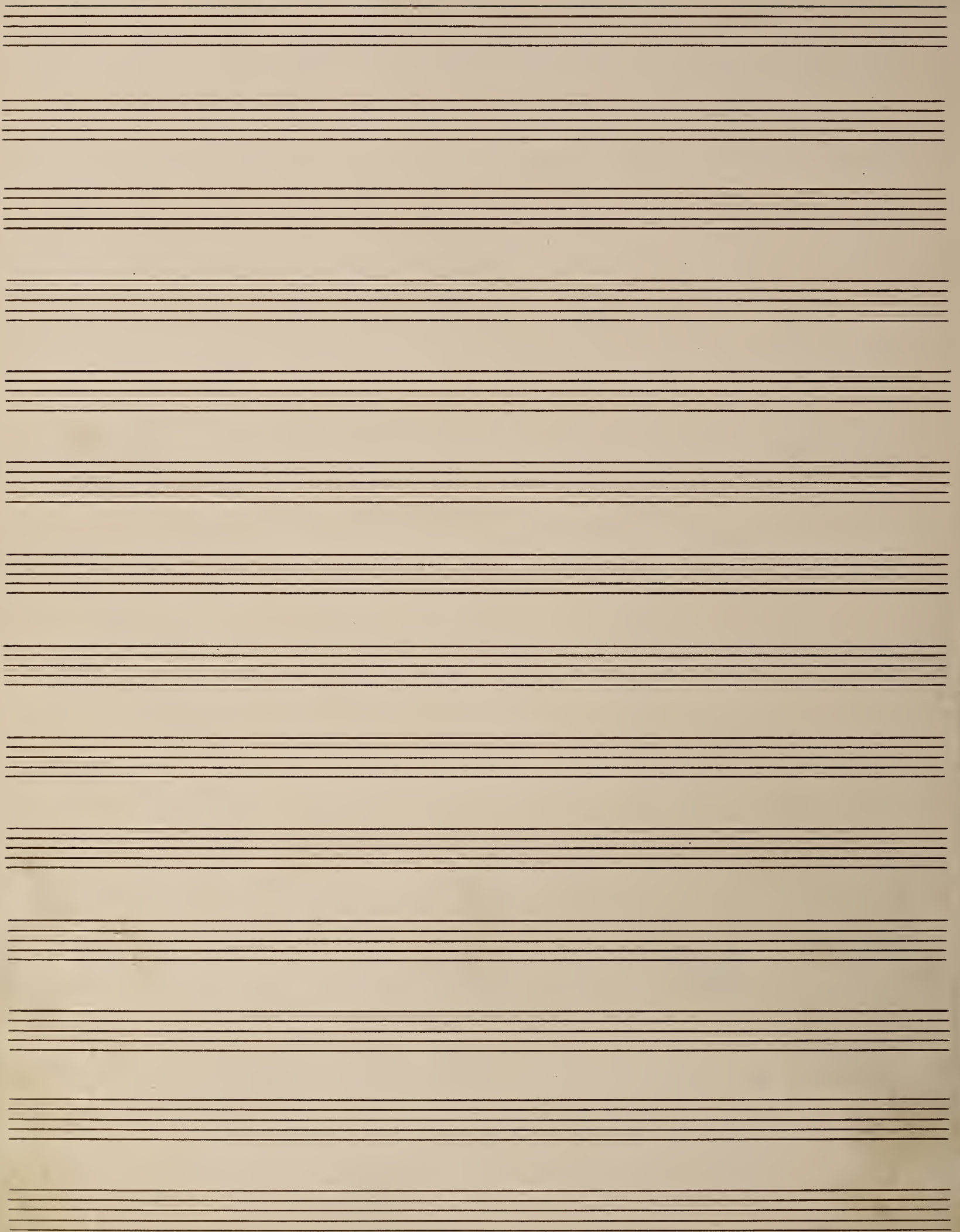
*Mazurka.*  $\text{C}:\#$   $\frac{3}{4}$  *p.*

*Allegro.*

*f* *Presto.*

*pizz.* *Arco.* *pp.*





~~Adagio~~ 17 ~~on B-flat~~

2<sup>o</sup> time  
Bis

*Bolero*  
Musical staff with treble clef, 3/4 time signature, and notes.

*Noise*

Musical staff with notes and rests.

Musical staff with notes, rests, and markings: *piu lento*, *pizz*.

*tempo*  
*arco cresc.*  
Musical staff with notes and rests.

*A*  
*pizz*  
*3 chords*  
Musical staff with notes and rests.

Musical staff with notes and rests.

*arco*  
Musical staff with notes and rests.

Musical staff with notes, rests, and a circled *Entra* marking.

Musical staff with notes and rests.

Musical staff with notes and rests.

Musical staff with notes and rests.

*V. S. Quel*



Allegretto 4.B.

Encore

4/4 *Alle breve* - **11** **1** **4** **6/8** *pizz*

*vivace*  
*arco*

1<sup>st.</sup> 2<sup>nd.</sup>

Moderato 4.C.

9/8 *p*

*Piu mosso.* **6/8**

Encore

*vivace.*

1<sup>st.</sup> 2<sup>nd.</sup>

Andante 4.D.

4/4 *pp*

Melodram

The page contains 12 horizontal musical staves, each consisting of five lines. The staves are arranged vertically and are currently empty, providing space for musical notation. The paper is aged and shows some staining, particularly in the lower right quadrant.









*Melodram*

