

Flauto

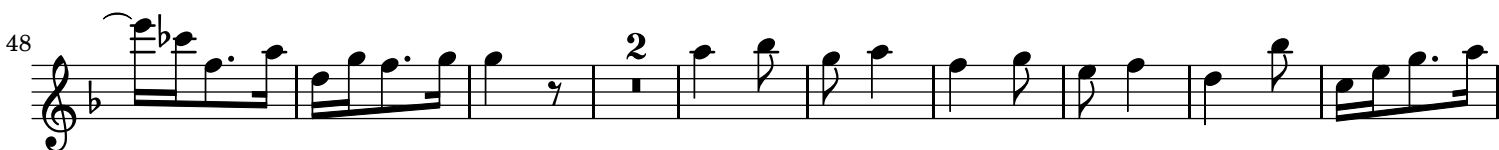
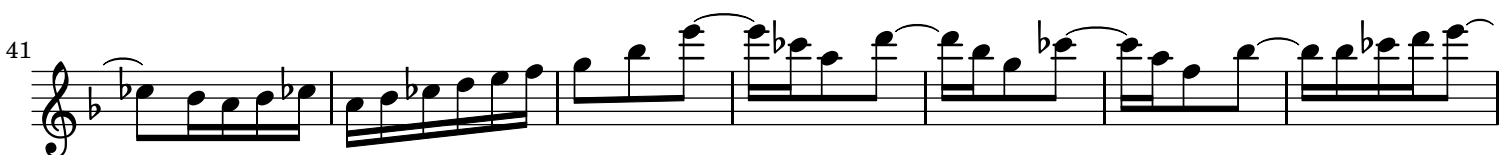
J.S. Bach

Tritt auf die Glaubensbahn

Cantata 152

Dominica post nativ: Christi

Flauto

I. (Sinfonia) -- Kammerton (in e)**Allegro ma non presto**

67



74



81



89



100



110



120



128



136



Detailed description of the musical score: This page contains the flute part for measures 67 through 142 of J.S. Bach's 'Tritt auf die Glaubensbahn'. The music is written in a single system with a treble clef and a key signature of one flat (B-flat). The tempo and meter are not explicitly stated but are implied by the notation. The score features a variety of rhythmic patterns, including eighth and sixteenth notes, and rests. Trills are indicated with 'tr.' above notes in measures 88, 100, and 110. A fermata is placed over the final note of measure 142. The page number '3' is located in the top right corner.

I. (Sinfonia) -- Kammerton (in g)**Allegro ma non presto**

69

76

83

90

101

110

120

128

136

I. (Sinfonia) -- Bach-Ausgabe (in e)



Allegro ma non presto



