

All^o ma nontropo

Sestetto

The musical score for Viola 1^a is written in 3/4 time with a key signature of one flat. It begins with a dynamic of *p* and includes a variety of dynamic markings: *cres*, *f*, *dim*, *pp*, *P*, *f*, *ff*, *p dol*, *dim*, *pp*, *f*, *p*, *cres*, *f*, *cres poco a poco*, and *ff*. The score features numerous slurs, accents, and articulation marks. Fingerings (1-3) and bowings (1-4) are indicated throughout. The piece concludes with a final *ff* dynamic.

Viola II

15 *p* *cres* *poco a poco* 1 2 3 4 5 6 7

8 9 10 11 12 1 2 3

4 5 6 7 8 9 10 11

12 1 13 11 *ff* *p*

sf *ff* *sf* *sf*

sf *p* 3 *p* 8 *p*

dim *pp*

cres *ff*

sf *p* 3 3 2 3 3

2 3 3 3 3 3 4

f *dol* *f*

f *dolce* *cres* *f*

3

Viola II

dim sempre

pp

2

f

pp

f

p

dolce

f

sf

f f f f f f f f f

dim

2

2

pp

f

pp

f

f

10

dim

pp

f

sf

sf

p

ANDANTE

molto moto

12

8

p

cres

fp

cres

fp

cres

cres

p

p

p

pp

p

arco

cres

pizz

p

pizz

V. S.

Viola 1^a

arco
cres

dim p PP cres f

p pizz arco cres p pp

dim cres

p cres

p f

cres

p cres f

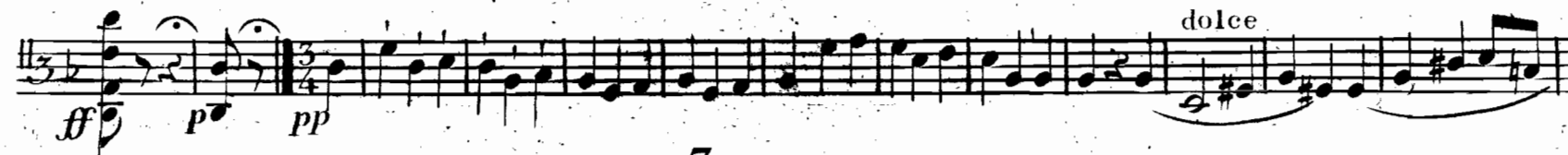
cres

cres

fp

p pizz arco cres

The musical score for Viola I consists of ten staves. The first staff begins with a dynamic of *f* and includes markings for *dim*, *p*, and *dim*. The second staff starts with *pp* and features *cres*, *sf*, *p*, and *pizz*. The third staff includes *coll' arco* and *p*. The fourth staff has *I* and *pp*. The fifth staff contains the instruction *Kukuk* and *pp*. The sixth staff begins with *ALLEGRO*, *pp*, and *dolce*. The seventh staff includes *7*, *dol*, and *dolce*. The eighth staff has *5*, *pp*, and *dolce*. The ninth staff features *cres*, *ff*, *sf*, *sf*, *sf*, and *sf*. The tenth staff includes *sf*, *sf*, *sf*, *sf*, and *sf*. The eleventh staff has *sf*, *dim*, and *pp*. The twelfth staff includes *pp*. The thirteenth staff has *pp*. The fourteenth staff includes *4*.



Viola I^a

V. S.

Viola I^a

The musical score for Viola I consists of 12 staves. The first staff begins with a dynamic marking of *ff*. The second staff has *sf* markings. The third staff includes *sf*, *pp*, *fp*, *pp*, and *fp*. The fourth staff starts with *cres* and *f*, followed by *piu f*. The fifth staff has *pp* markings. The sixth staff contains the lyrics "ere - - - scen - - - do" and features *ff* and *sf* markings. The seventh, eighth, ninth, and tenth staves are primarily marked with *sf*. The eleventh staff has *f*, *p*, *cres*, *fp*, *cres*, and *f* markings. The twelfth staff ends with a *ff* marking.

Viola II

sf sf sf sempre dim

P f dim PP dolce

Allegretto Solo pp

cres ff

1

cres f

P cres f f > dim 1

Viola 1^a

The musical score for Viola 1^a on page 10 consists of 12 staves of music. The key signature is one flat (B-flat) and the time signature is 3/4. The score includes various dynamic markings and performance instructions:

- Staff 1: *cres*
- Staff 2: *ff*, *3* (triplet)
- Staff 3: *p*, *p*, *f*, *p*
- Staff 4: *ff*, *ff*, *pp*
- Staff 5: *ff*, *f*, *dim*, *p*, *dim*, *pp*, *cres*, *p*
- Staff 6: *pizz*, *arco*
- Staff 7: *ff*, *3* (triplet)
- Staff 8: *piu f*
- Staff 9: *f*, *cres*, *f*, *ff*, *ff*, *p*, *dim*, *pp*

Viola I

Musical score for Viola I, page 11. The score consists of ten staves of music in 3/4 time with a key signature of one flat. It features various dynamics including crescendos (*cres*), fortissimos (*ff*), fortis (*f*), piano (*p*), pianissimo (*pp*), and decrescendos (*dim*). Performance markings include accents, slurs, and a "sotto voce" instruction. The piece concludes with a "Fine" marking.

