

TWO MARCHES

(ULB Mus Ms 1223-21- Darmstadt)

for Wind Ensemble

Clarinet in B \flat 1

Anonymous, Manuscript.n.d. (ca.1790)

Ed. Michel Rondeau

1. Moderato $\text{♩} = 75$ (par Princess Amàlia)

Musical notation for the first march, measures 1-11. The piece is in 2/4 time, key of B-flat major. It begins with a treble clef and a key signature of one flat. The melody consists of eighth and sixteenth notes, with a trill (tr) in measure 10. Measure numbers 6 and 11 are indicated at the start of their respective staves.

2. Moderato (par Prince Christian)

Musical notation for the second march, measures 1-31. The piece is in 2/4 time, key of B-flat major. It begins with a treble clef and a key signature of one flat. The melody features a mix of eighth and sixteenth notes, with a trill (tr) in measure 24. Measure numbers 22, 27, and 31 are indicated at the start of their respective staves.

TWO MARCHES

(ULB Mus Ms 1223-21- Darmstadt)

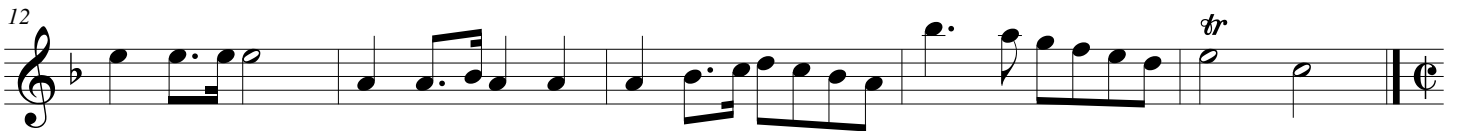
for Wind Ensemble

Clarinet in B \flat 2

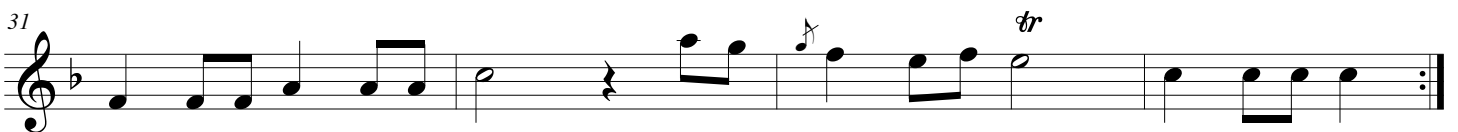
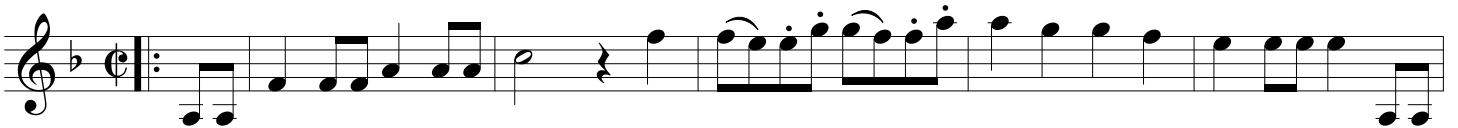
Anonymous, Manuscript.n.d. (ca.1790)

Ed. Michel Rondeau

1. Moderato $\text{♩} = 75$ (par Princess Amàlia)



2. Moderato (par Prince Christian)



TWO MARCHES

(ULB Mus Ms 1223-21- Darmstadt)

Clarinet in E \flat 2

for Wind Ensemble

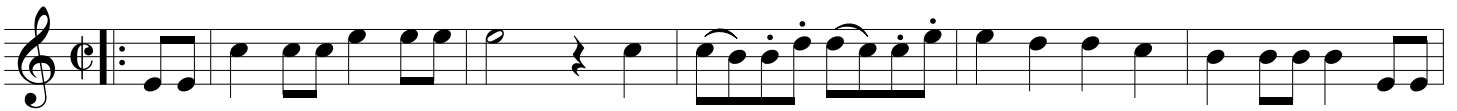
Anonymous, Manuscript.n.d. (ca.1790)

Ed. Michel Rondeau

1. Moderato $\text{♩} = 75$ (par Princess Amàlia)



2. Moderato (par Prince Christian)



TWO MARCHES

(ULB Mus Ms 1223-21- Darmstadt)

for Wind Ensemble

Horn in F 1

Anonymous, Manuscript.n.d. (ca.1790)

Ed. Michel Rondeau

1. Moderato $\text{♩} = 75$ (par Princess Amàlia)

Musical notation for the first march, measures 1-11. The key signature is one flat (B-flat), and the time signature is common time (C). The notation includes a treble clef, a key signature change to one flat, and various rhythmic values including quarter, eighth, and sixteenth notes, as well as rests and trills.

2. Moderato (par Prince Christian)

Musical notation for the second march, measures 12-31. The key signature is one flat (B-flat), and the time signature is common time (C). The notation includes a treble clef, a key signature change to one flat, and various rhythmic values including quarter, eighth, and sixteenth notes, as well as rests, trills, and dynamic markings like *p*.

TWO MARCHES

(ULB Mus Ms 1223-21- Darmstadt)

for Wind Ensemble

Horn in F 2

Anonymous, Manuscript.n.d. (ca.1790)

Ed. Michel Rondeau

1. Moderato $\text{♩} = 75$ (par Princess Amàlia)



2. Moderato (par Prince Christian)



TWO MARCHES

(ULB Mus Ms 1223-21- Darmstadt)

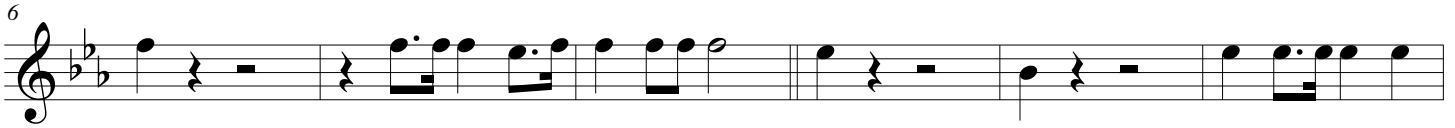
for Wind Ensemble

Trumpet in C 1

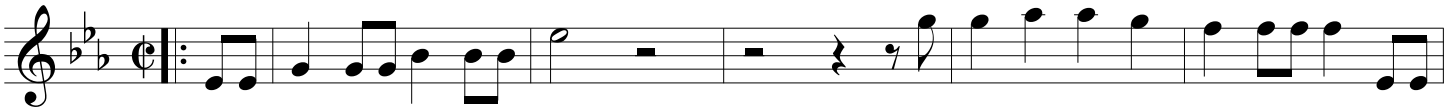
Anonymous, Manuscript.n.d. (ca.1790)

Ed. Michel Rondeau

1. Moderato $\text{♩} = 75$ (par Princess Amàlia)



2. Moderato (par Prince Christian)



TWO MARCHES

(ULB Mus Ms 1223-21- Darmstadt)

for Wind Ensemble

Trumpet in C 2

Anonymous, Manuscript.n.d. (ca.1790)

Ed. Michel Rondeau

1. Moderato $\text{♩} = 75$ (par Princess Amàlia)



2. Moderato (par Prince Christian)

