

LA FORZA DEL DESTINO

DETROIT SYMPHONY ORCHESTRA

Cello

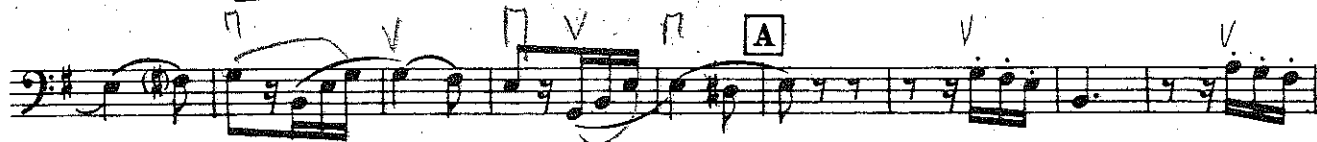
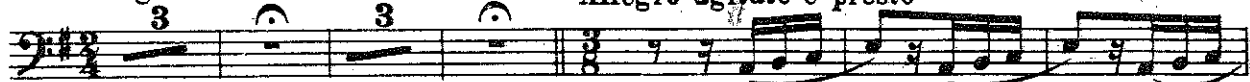
FORD AUDITORIUM

DETROIT 26, MICHIGAN

G. VERDI

Allegro

Allegro agitato e presto



B Andantino

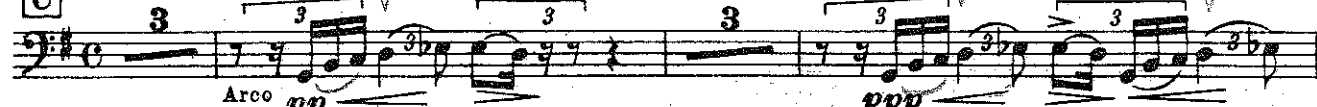
1 Pizz.



C Andante mosso

Arco pp

ppp



D Presto come prima



Cello

ff

ff

E⁷

F Andante come prima *Pizz.*

G Allegro brillante *Pizz. p*

Arco

Pizz.

H *mf stacc.*

mf cresc.

18. Tutti fo exa
mf cresc.

vee

Cello

First musical staff with notes and accidentals.

Second musical staff with notes, slurs, and dynamic marking *ff*.

Third musical staff with notes, slurs, and dynamic marking *ff*.

(V)

Fourth musical staff with notes, slurs, and dynamic marking *f*.

Fifth musical staff with notes, slurs, and dynamic marking *f*.

Sixth musical staff with notes, slurs, and dynamic marking *pp*.

Seventh musical staff with notes, slurs, and dynamic marking *pp*.

Eighth musical staff with notes, slurs, and dynamic marking *pp*.

Ninth musical staff with notes, slurs, and dynamic marking *f*.

Ritenuato grandioso

Tenth musical staff with notes, slurs, and dynamic marking *ff*.

Tempo I (Allegro brill)

Eleventh musical staff with notes, slurs, and dynamic marking *pp*.

Twelfth musical staff with notes, slurs, and dynamic marking *p*.

Cello

First staff of music in bass clef with a key signature of two sharps (F# and C#). It features a melodic line with slurs and accents, and a rhythmic accompaniment of eighth notes.

Second staff of music, continuing the melodic and rhythmic patterns from the first staff.

Third staff of music, marked with a square box containing the letter 'O' and a dynamic marking of *ff* (fortissimo). It includes slurs and accents.

Fourth staff of music, continuing the melodic and rhythmic patterns.

Fifth staff of music, marked with a square box containing the letter 'P' and a dynamic marking of *pp* (pianissimo). It features a steady eighth-note accompaniment.

Sixth staff of music, marked with a dynamic marking of *f* (forte) and the instruction *cresc.* (crescendo). It consists of a dense, rapid sixteenth-note passage.

Seventh staff of music, marked with a dynamic marking of *f* and the instruction *Più grandioso*. It features a melodic line with slurs and accents.

Eighth staff of music, marked with dynamic markings of *mf* (mezzo-forte) and *ff* (fortissimo). It includes slurs and accents.

Ninth staff of music, featuring a melodic line with slurs and accents.

Tenth staff of music, marked with dynamic markings of *p* (piano) and *ff* (fortissimo). It includes slurs and accents.

Eleventh staff of music, featuring a melodic line with slurs and accents.