

SONATE DA CAMERA A TRE

Violino II

Sonata VII

Antonio Vivaldi, Op.1

PRELUDIO
Largo

Musical notation for the Preludio section, marked Largo. It consists of four staves of music in G minor, 3/4 time. The first staff begins with a treble clef and a key signature of two flats. The music features a steady eighth-note accompaniment with a melodic line of eighth notes. The second staff includes a repeat sign. The third and fourth staves continue the melodic and accompanimental patterns.

ALLEMANDA
Allegro

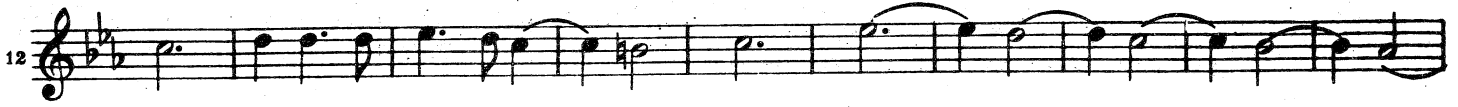
piano

Musical notation for the Allemanda section, marked Allegro. It consists of nine staves of music in G minor, 3/4 time. The first staff begins with a treble clef and a key signature of two flats. The music is characterized by a rhythmic pattern of eighth and sixteenth notes. The second staff includes a repeat sign. The third and fourth staves continue the melodic and accompanimental patterns. The fifth staff includes a repeat sign. The sixth and seventh staves continue the melodic and accompanimental patterns. The eighth and ninth staves conclude the section. The word *piano* is written below the final staff.

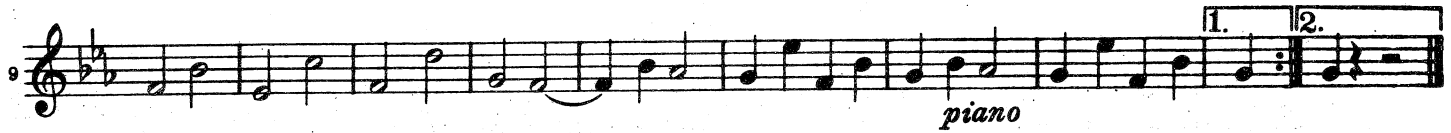
Edwin F. Kalmus
Publisher of music
New York, N.Y.

Violino II

SARABANDA
Andante

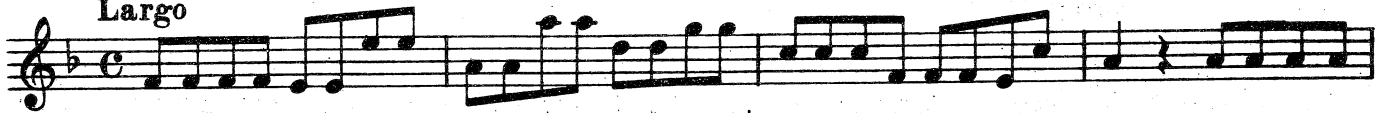


GIGA
Presto



Sonata VIII

PRELUDIO
Largo



Violino II

CORRENTE
Allegro

7

14 *piano*

20

28

33

41

48 *piano*

55

Grave

5

11 *piano*

Violino II

GIGA Allegro

5

10

15

20

25

30

piano

PRELUDIO Allegro

Sonata IX

1 Viol. I

6

13

19

Adagio

ALLEMANDA
Allegro

Violino II

Viol. I

Musical score for Allemanda, Violino II, measures 1-32. The score is written in treble clef with a key signature of two sharps (F# and C#). The tempo is marked 'Allegro'. The music consists of a single melodic line. Measure numbers 6, 11, 17, 28, and 32 are indicated at the beginning of their respective staves. The piece concludes with a double bar line and repeat dots at the end of measure 32.

piano

CORRENTE

Presto

Vcllo

Musical score for Corrente, Violino II, measures 1-51. The score is written in treble clef with a key signature of two sharps (F# and C#). The tempo is marked 'Presto'. The music consists of a single melodic line. Measure numbers 9, 17, 24, 38, 43, and 51 are indicated at the beginning of their respective staves. The piece concludes with a double bar line and repeat dots at the end of measure 51.

piano

forte

Sonata X

PRELUDIO

Adagio

Musical notation for the Preludio section, measures 1-34. The music is in G minor, 3/2 time, and marked Adagio. It features a slow, melodic line with long intervals and a final measure marked piano.

ALLEMANDA

Allegro

Musical notation for the Allemanda section, measures 35-25. The music is in G minor, 3/2 time, and marked Allegro. It features a lively, rhythmic line with many sixteenth notes and a final measure marked piano.

29

38

37

GAVOTTA

Presto

Vello.

piano

forte

6

10

15

20

25

30

piano

35

forte

39

piano

Sonata XI

PRELUDIO

Andante

Viol. I

Musical score for the first part of the prelude, measures 1-23. The music is in G major and 3/4 time. It features a melodic line with various ornaments and a rhythmic accompaniment. Measure numbers 5, 9, 14, and 19 are indicated on the left. The word *piano* appears at the end of measure 19.

CORRENTE

Allegro

forte

Musical score for the second part of the prelude, measures 24-69. The music is in G major and 3/8 time. It features a rhythmic accompaniment with eighth notes and a melodic line with eighth notes. Measure numbers 28, 34, 46, 58, and 69 are indicated on the left. The word *piano* appears at the end of measure 69.

GIGA
Allegro

Violino II

Viol. I

2

8

piano forte

14

23

Detailed description: This block contains the first system of the Giga movement. It consists of four staves of music. The first staff starts with a treble clef, a key signature of one sharp (F#), and a 12/8 time signature. It begins with a double bar line and a first ending bracket labeled '2'. The music is written for Violino II, with 'Viol. I' written above the staff. The second staff includes the dynamic markings 'piano' and 'forte'. The third and fourth staves continue the melodic line with various rhythmic patterns and articulations.

GAVOTTA
Presto

7

13

piano

19

forte

26

piano

Detailed description: This block contains the musical notation for the Gavotta movement. It consists of four staves of music. The first staff starts with a treble clef, a key signature of one sharp (F#), and a common time signature (C). The music is written for Violino II. The second staff includes the dynamic marking 'piano'. The third staff includes the dynamic marking 'forte'. The fourth staff includes the dynamic marking 'piano'. The piece concludes with a double bar line and a repeat sign.

Sonata XII
Folia

1. Adagio

9

piano

Detailed description: This block contains the first movement of Sonata XII, 'Folia'. It consists of two staves of music. The first staff starts with a treble clef, a key signature of two flats (Bb, Eb), and a 3/4 time signature. The music is written for Violino II. The second staff includes the dynamic marking 'piano'. The piece concludes with a double bar line and a repeat sign.

2. Andante

17

25

Detailed description: This block contains the second movement of Sonata XII, 'Folia'. It consists of two staves of music. The first staff starts with a treble clef, a key signature of two flats (Bb, Eb), and a 3/4 time signature. The music is written for Violino II. The second staff continues the melodic line. The piece concludes with a double bar line and a repeat sign.

3. Allegro

Viol. I

38

41

4. 49

57

5. 65

70

75

6. 81

89

7. 97

102

107

8. 113

121

Detailed description: This page contains the musical score for the second violin part of a piece. It features 12 staves of music, each beginning with a measure number. The music is written in treble clef with a key signature of one flat (B-flat) and a 3/4 time signature. The tempo is marked 'Allegro'. The score includes various musical notations such as eighth and sixteenth notes, rests, and dynamic markings. A 'Viol. I' marking is present on the first staff. The page number '10' is in the top left, and the instrument name 'Violino II' is centered at the top. The section title '3. Allegro' is positioned above the first staff.

Violino II

9. Adagio
129 Viol. I

140 10. Vivace

151

11. Allegro
161 Viol. I

166

171

12. Larghetto
177

13. Allegro
193

197

201

205 14.

213

15. Adagio
225

229

Violino II

16. Allegro

233 Musical staff 233-240: Treble clef, 3/4 time signature, key signature of one flat. Measures 233-240.

241 Musical staff 241-248: Treble clef, 3/4 time signature, key signature of one flat. Measures 241-248.

17. 249 Musical staff 249-254: Treble clef, 3/4 time signature, key signature of one flat. Measures 249-254.

255 Musical staff 255-260: Treble clef, 3/4 time signature, key signature of one flat. Measures 255-260.

261 Musical staff 261-268: Treble clef, 3/4 time signature, key signature of one flat. Measures 261-268.

18. 269 Musical staff 269-276: Treble clef, 3/4 time signature, key signature of one flat. Measures 269-276.

19. 281 Musical staff 281-288: Treble clef, 3/4 time signature, key signature of one flat. Measures 281-288.

285 Musical staff 285-292: Treble clef, 3/4 time signature, key signature of one flat. Measures 285-292.

289 Musical staff 289-296: Treble clef, 3/4 time signature, key signature of one flat. Measures 289-296.

293 Musical staff 293-300: Treble clef, 3/4 time signature, key signature of one flat. Measures 293-300.

20. 297 Musical staff 297-304: Treble clef, 3/4 time signature, key signature of one flat. Measures 297-304.

302 Musical staff 302-309: Treble clef, 3/4 time signature, key signature of one flat. Measures 302-309.

307 Musical staff 307-314: Treble clef, 3/4 time signature, key signature of one flat. Measures 307-314.

312 Musical staff 312-319: Treble clef, 3/4 time signature, key signature of one flat. Measures 312-319.

piano