



Messa

a 2. voci con Stru: ad libitū

Del Mto: Revdo Padre
Pazzaglia Cappuccino

Violino Pmo

1
Messa

2. 11. voci con Strad ad Libitum.

Del M^{ro} Leo^o Pre

Pazzaglia Cappuccino

Violino Primo

All. Moderato

Volo

A handwritten musical score consisting of ten staves. The notation is dense and includes various rhythmic values, accidentals, and dynamic markings. The first nine staves contain complex melodic and harmonic lines. The tenth staff features a section marked 'Solo voce' with a single note. The paper shows signs of age and wear.

Solo voce

Andante

Chritte

Handwritten musical notation on eight staves. The notation includes various note values, rests, and slurs. The first staff begins with a treble clef and a key signature of two sharps (F# and C#). The music is written in a fluid, cursive style. The eighth staff ends with a wavy line, indicating the end of the piece.

Segue

Allegro
Lirica

Allegro

A page of handwritten musical notation consisting of ten staves. The notation is written in black ink on aged, slightly yellowed paper. The first staff begins with a treble clef and a common time signature (C). The music is written in a single system across all ten staves. The notation includes various note values (quarter, eighth, and sixteenth notes), rests, and beams connecting notes. There are several instances of double and triple slurs over groups of notes, indicating complex rhythmic patterns or ornaments. The handwriting is fluid and characteristic of 18th or 19th-century manuscript notation. The page shows signs of age, including some staining and wear along the right edge.

Handwritten musical notation on three staves. The first staff begins with a treble clef and a key signature of one sharp (F#). The music consists of several measures with complex rhythmic patterns, including slurs and ties. The second and third staves continue the piece with similar rhythmic complexity and slurs.

Gloria

Handwritten musical notation for the 'Gloria' section. It begins with the tempo marking 'Allegro' and a 6/4 time signature. The notation is spread across five staves. The first staff includes a 3/4 time signature change. The music features various rhythmic patterns, slurs, and a dynamic marking of *fmo* (for *forzando*) on the third staff. The piece concludes with a double bar line and a flourish.

A handwritten musical score consisting of ten staves. The notation is dense and includes various musical symbols such as notes, rests, beams, and slurs. The first staff begins with a treble clef and a common time signature. The notation is somewhat messy, with some ink bleed-through and overlapping notes. The score appears to be a single melodic line or a simple accompaniment. The paper is aged and shows some staining, particularly along the right edge.

Handwritten musical notation on five staves. The notation includes various rhythmic values, stems, and beams, with some notes marked with slurs and accents. The staves are arranged vertically, showing a progression of musical ideas.

Larghetto | 6/4 ³/₄

Handwritten musical notation on a single staff. It begins with the tempo marking *Larghetto* and a time signature of 3/4. The notation includes a wavy line and several notes.

Handwritten musical notation on two staves. The notation continues with various rhythmic patterns and melodic lines, including slurs and accents.

Handwritten musical notation on a single staff. It ends with the tempo marking *Volo presto*. The notation includes a wavy line and several notes.

This image shows a page of handwritten musical notation on ten staves. The notation includes various note values, rests, and dynamic markings such as *p*, *pp*, and *ppp*. There are several instances of double and triple slurs over notes. A significant portion of the fifth staff is obscured by a dense cross-hatched pattern, indicating a section that has been crossed out or is a correction. The manuscript is written in dark ink on aged, slightly yellowed paper.

Handwritten musical notation on five staves. The notation includes various rhythmic values, slurs, and dynamic markings such as 'p' (piano) and 'f' (forte). The first staff begins with a treble clef and a 4/4 time signature. The subsequent staves use different clefs, including a bass clef and a C-clef.

Allegro

Domine Deus *p^{mo}* *ritovore*

Handwritten musical notation for the 'Allegro' section, consisting of five staves. The first staff features the tempo marking 'Allegro' and the lyrics 'Domine Deus' with dynamic markings 'p^{mo}' and 'ritovore'. The notation includes various rhythmic values and slurs.

Handwritten musical notation on a single staff, concluding with the instruction 'Vobis presto' written in a large, decorative script.

A handwritten musical score consisting of ten staves. The notation is in a single system, likely for a single melodic line. The first staff begins with a treble clef and a key signature of one sharp (F#). The music is written in a fluid, cursive style. The second staff contains a dynamic marking of *pp* (pianissimo) near the beginning. The notation includes various note values, including quarter, eighth, and sixteenth notes, as well as rests and slurs. The piece concludes with a double bar line and repeat dots at the end of the tenth staff.

Grave
Qui tollis

Volte presto

A handwritten musical score consisting of ten staves. The notation includes various note values, rests, and dynamic markings. The first staff begins with a treble clef and a common time signature. The second staff features a bass clef. The third staff includes the tempo marking *All^o* and a 3/4 time signature. The seventh staff contains the tempo marking *Grave*. The manuscript shows signs of age, including some ink bleed-through and a yellowish stain at the bottom.

Handwritten musical notation on four staves. The first staff is in treble clef with a common time signature. The second and third staves are in bass clef. The fourth staff is in treble clef and contains a wavy scribble.

Andante 6/4

Handwritten musical notation on five staves, all in bass clef. The first staff begins with the tempo marking "Andante" and the time signature "6/4". The notation includes various note values, rests, and dynamic markings such as "p".

A handwritten musical score consisting of ten staves. The notation is in a single system, likely for a piano. The first staff begins with a treble clef and a key signature of one flat. The music is written in a fluid, cursive style. The second staff starts with a double bar line and a sharp sign, indicating a change in dynamics or articulation. The fifth staff begins with a piano (*p*) dynamic marking. The score includes various rhythmic values, including eighth and sixteenth notes, and rests. There are several instances of slurs and phrasing marks throughout the piece. The paper shows signs of age, with some staining and discoloration.

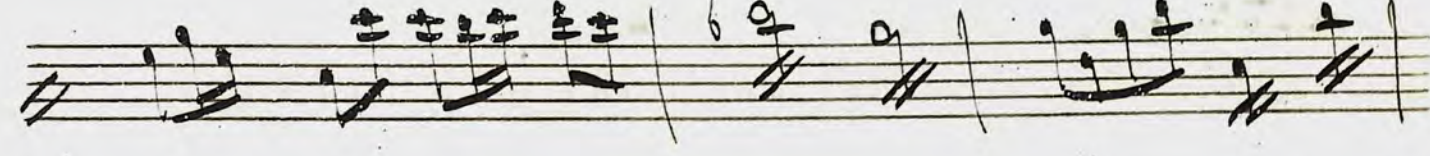
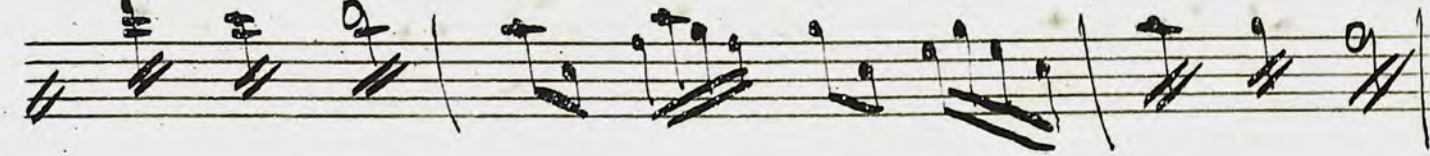
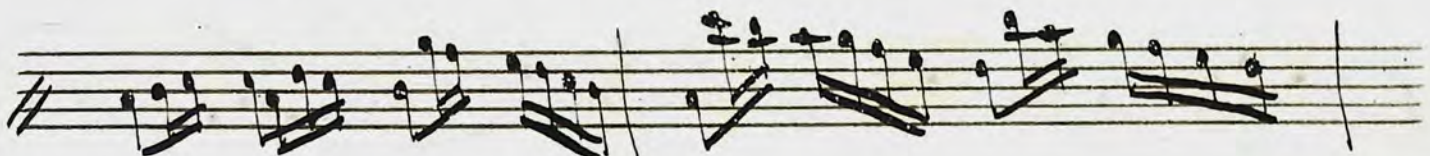
Allegro ♩ 4/4

Handwritten musical notation on seven staves. The notation includes various notes, rests, and complex rhythmic patterns. The first six staves contain dense musical notation with many notes and rests. The seventh staff contains a single note followed by a wavy line, possibly representing a tremolo or a specific musical effect.

Segue il Credo

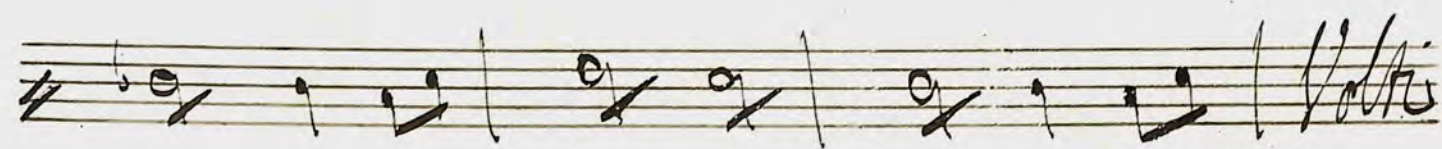
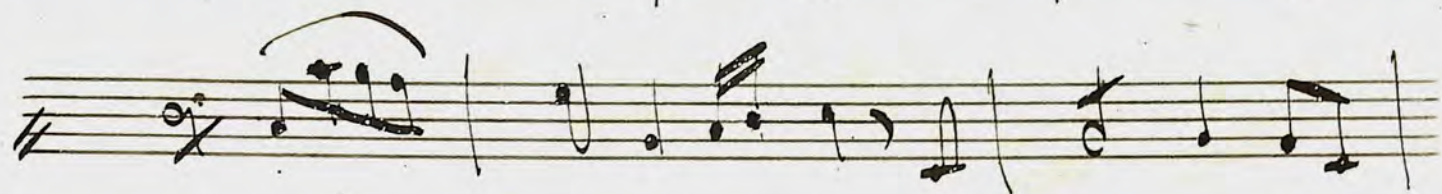
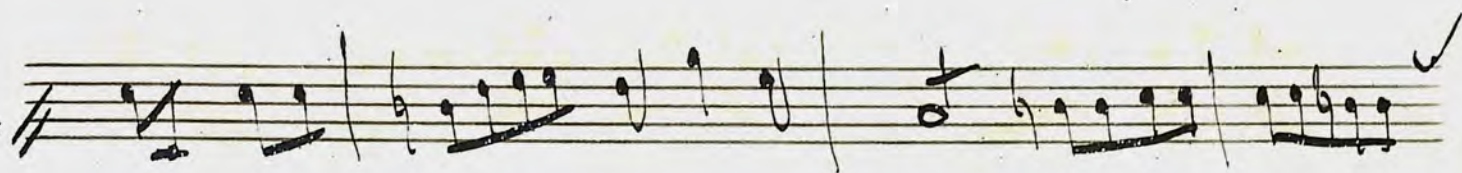
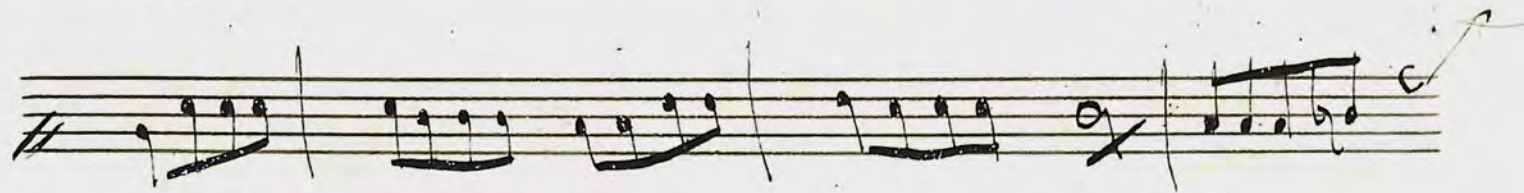
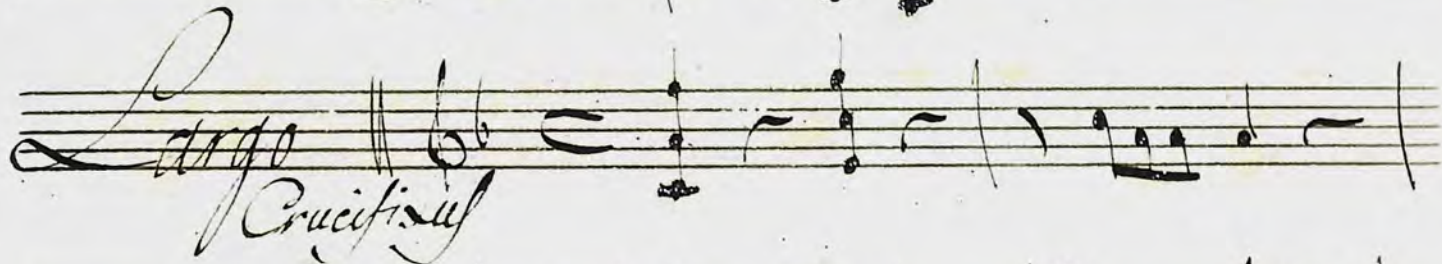
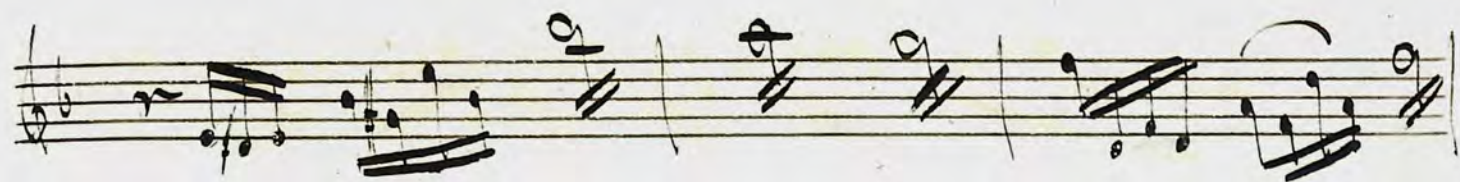
Credo

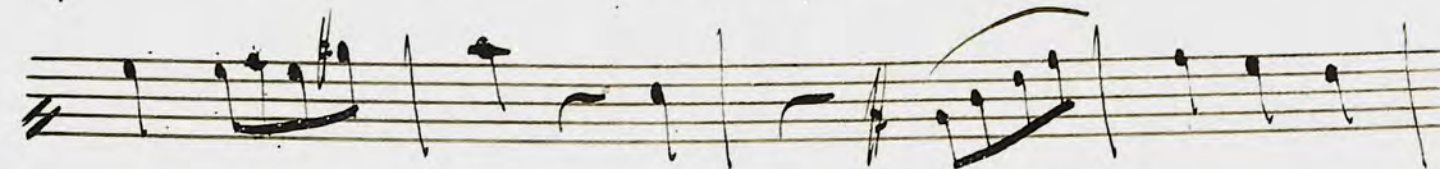
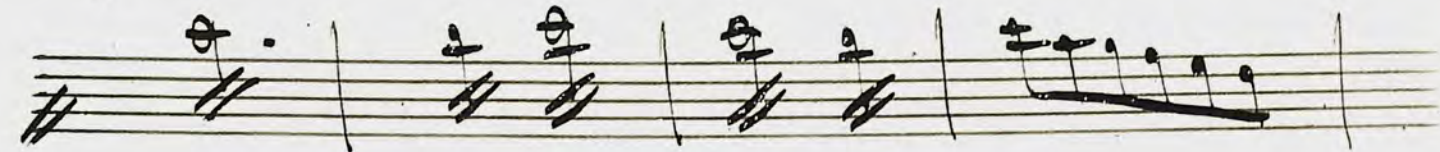
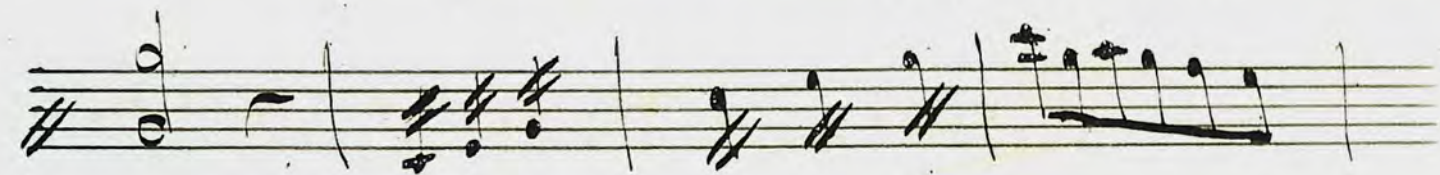
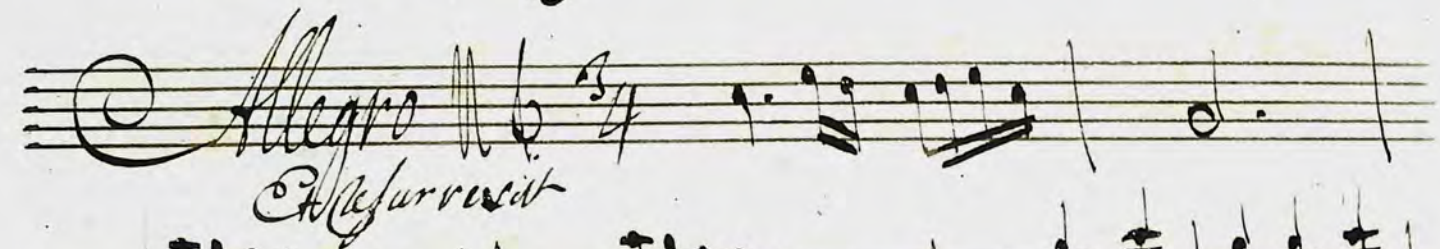
All. Moderato



Fine

A handwritten musical score consisting of ten staves. The notation is dense and includes various musical symbols such as notes, rests, and dynamic markings. The first staff begins with a treble clef and a common time signature. A handwritten 'f' (forte) is written below the first staff. The notation is written in black ink on aged paper. The score concludes with a double bar line and a fermata on the final note of the tenth staff. The word 'Allegro' is written in a cursive hand above the final few notes of the tenth staff.





A handwritten musical score consisting of ten staves. The notation includes various rhythmic values such as eighth, sixteenth, and thirty-second notes, as well as rests and slurs. The key signature is one sharp (F#), and the time signature is 4/4. The music is written in a cursive, handwritten style. The first staff begins with a treble clef and a key signature of one sharp. The notation is dense and expressive, with many slurs and dynamic markings. The final staff concludes with a double bar line and the word 'Adri' written in cursive.

Adri

A handwritten musical score consisting of ten staves. The notation is dense and includes various rhythmic values, accidentals, and dynamic markings. The first staff begins with a treble clef and a key signature of one sharp (F#). The notation is highly detailed, with many notes and accidentals. The second staff has a dynamic marking of *pp*. The third staff has a dynamic marking of *pp*. The fourth staff has a dynamic marking of *pp*. The fifth staff has a dynamic marking of *pp*. The sixth staff has a dynamic marking of *pp*. The seventh staff has a dynamic marking of *pp*. The eighth staff has a dynamic marking of *pp*. The ninth staff has a dynamic marking of *pp*. The tenth staff has a dynamic marking of *pp*. The notation is highly detailed, with many notes and accidentals.

A handwritten musical score consisting of ten staves. The notation includes various rhythmic values such as eighth notes, sixteenth notes, and dotted notes. There are several accidentals, including sharps and naturals. The music appears to be a single melodic line, possibly for a violin or flute. The handwriting is fluid and characteristic of 18th or 19th-century manuscript notation.

Finis