

1
Contrabasso

Beatuf Vir

a tre voci

Con Strumenti



Alllegro 0:11 5

Handwritten musical notation on a five-line staff, featuring a treble clef, a key signature of one sharp (F#), and a common time signature (C). The notation includes a series of eighth notes and quarter notes.

Handwritten musical notation on a five-line staff, continuing the piece with eighth and quarter notes.

Handwritten musical notation on a five-line staff, featuring a treble clef, a key signature of one sharp (F#), and a common time signature (C). The notation includes a series of eighth notes and quarter notes.

Handwritten musical notation on a five-line staff, featuring a treble clef, a key signature of one sharp (F#), and a common time signature (C). The notation includes a series of eighth notes and quarter notes.

Handwritten musical notation on a five-line staff, featuring a treble clef, a key signature of one sharp (F#), and a common time signature (C). The notation includes a series of eighth notes and quarter notes.

Handwritten musical notation on a five-line staff, featuring a treble clef, a key signature of one sharp (F#), and a common time signature (C). The notation includes a series of eighth notes and quarter notes.

Handwritten musical notation on a five-line staff, featuring a treble clef, a key signature of one sharp (F#), and a common time signature (C). The notation includes a series of eighth notes and quarter notes.

Handwritten musical notation on a five-line staff, featuring a treble clef, a key signature of one sharp (F#), and a common time signature (C). The notation includes a series of eighth notes and quarter notes.

Handwritten musical notation on a five-line staff, featuring a treble clef, a key signature of one sharp (F#), and a common time signature (C). The notation includes a series of eighth notes and quarter notes.

2. *legato* *pmo.*

pmo. legato

64

Tolles

Exortum *Primo.*

Largo

fmo.

ft. p.

f

fu p.

f p.

f

p.

f

f

f

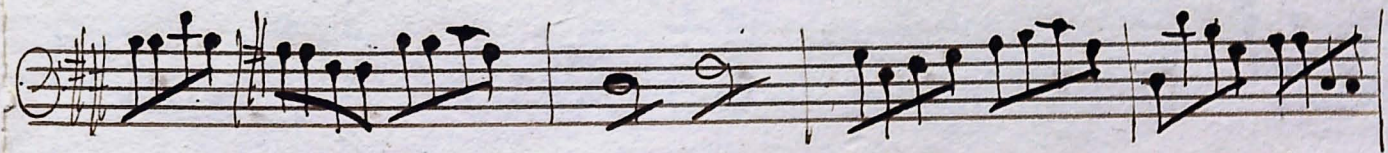
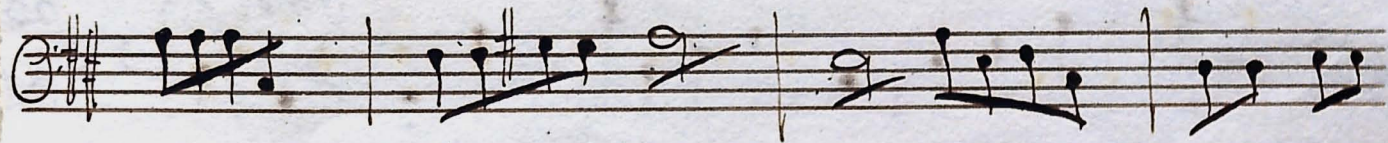
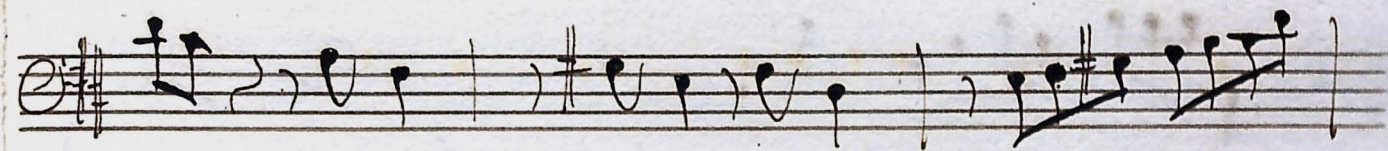
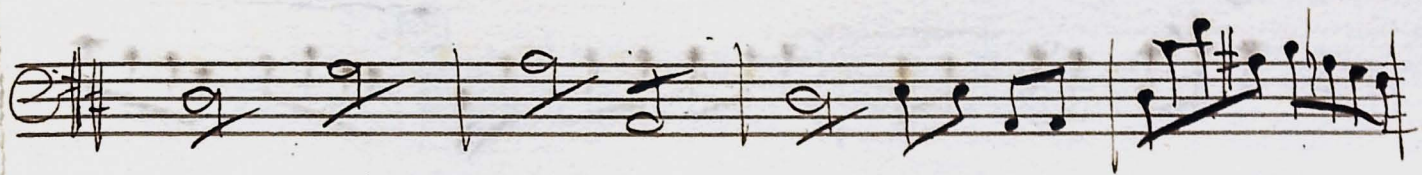
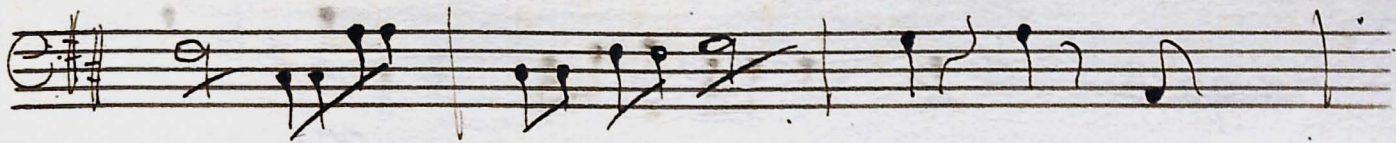
f

Allo.

f

f

f



68-

Volkin

6

Peccator

Largo $\text{E}^{\#}$ $\frac{3}{4}$

Allo.

Pmo. 23

Gloria

Largo $\text{E}^{\#}$ $\frac{3}{4}$

Handwritten musical notation on a five-line staff, featuring a treble clef and a key signature of one sharp (F#). The notation includes various note values and rests.

Handwritten musical notation on a five-line staff, featuring a treble clef and a key signature of one sharp (F#). The notation includes various note values and rests.

Handwritten musical notation on a five-line staff, featuring a treble clef and a key signature of one sharp (F#). The notation includes various note values and rests.

Handwritten musical notation on a five-line staff, featuring a treble clef and a key signature of one sharp (F#). The notation includes various note values and rests.

Handwritten musical notation on a five-line staff, featuring a treble clef and a key signature of one sharp (F#). The notation includes various note values and rests.

Handwritten musical notation on a five-line staff, featuring a treble clef and a key signature of one sharp (F#). The notation includes various note values and rests.

Handwritten musical notation on a five-line staff, featuring a treble clef and a key signature of one sharp (F#). The notation includes various note values and rests.

Handwritten musical notation on a five-line staff, featuring a treble clef and a key signature of one sharp (F#). The notation includes various note values and rests.

Handwritten musical notation on a five-line staff, featuring a treble clef and a key signature of one sharp (F#). The notation includes various note values and rests.

Handwritten musical notation on a five-line staff, featuring a treble clef and a key signature of one sharp (F#). The notation includes various note values and rests. The word "Voll" is written in the final measure.

Sicut erat

Handwritten musical notation on a single staff, starting with a treble clef, a key signature of two sharps (F# and C#), and a 3/4 time signature. The music consists of a sequence of eighth and quarter notes.

Handwritten musical notation on a single staff, starting with a treble clef, a key signature of two sharps, and a 3/4 time signature. The music features a series of beamed eighth notes. The word "for" is written below the first measure.

Handwritten musical notation on a single staff, starting with a treble clef, a key signature of two sharps, and a 3/4 time signature. The music consists of quarter notes. The word "for" is written below the final measure.

Handwritten musical notation on a single staff, starting with a treble clef, a key signature of two sharps, and a 3/4 time signature. The music features a series of beamed eighth notes.

Handwritten musical notation on a single staff, starting with a treble clef, a key signature of two sharps, and a 3/4 time signature. The music consists of quarter notes.

Handwritten musical notation on a single staff, starting with a treble clef, a key signature of two sharps, and a 3/4 time signature. The music features quarter notes with slurs. The word "p." is written below the first measure, "for" below the second measure, and "p." below the fifth measure.

Handwritten musical notation on a single staff, starting with a treble clef, a key signature of two sharps, and a 3/4 time signature. The music features quarter notes and rests. The word "for" is written below the second measure, "p." below the fourth measure, and "for" below the sixth measure.

Handwritten musical notation on a single staff, starting with a treble clef, a key signature of two sharps, and a 3/4 time signature. The music features quarter notes and rests. The word "p." is written below the second measure, and "for" below the fifth measure.

Handwritten musical notation on a single staff, starting with a treble clef, a key signature of two sharps, and a 3/4 time signature. The music features quarter notes and rests. A triplet of eighth notes is indicated by a "3" above the notes.

Handwritten musical notation on a single staff, starting with a treble clef, a key signature of two sharps, and a 3/4 time signature. The music features quarter notes and rests. A slur is placed over the first two notes of the second measure.

