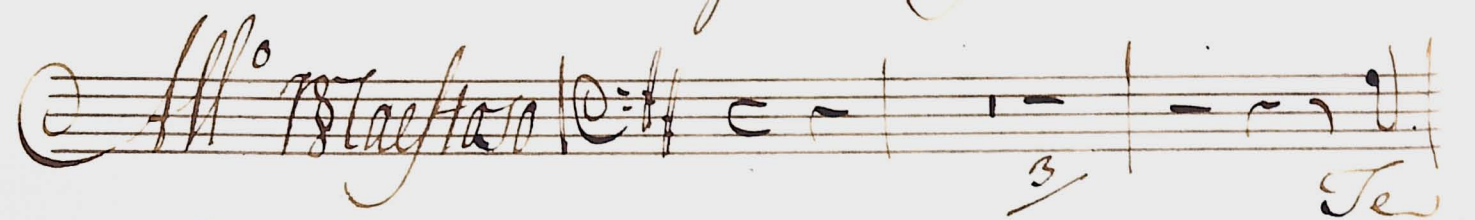
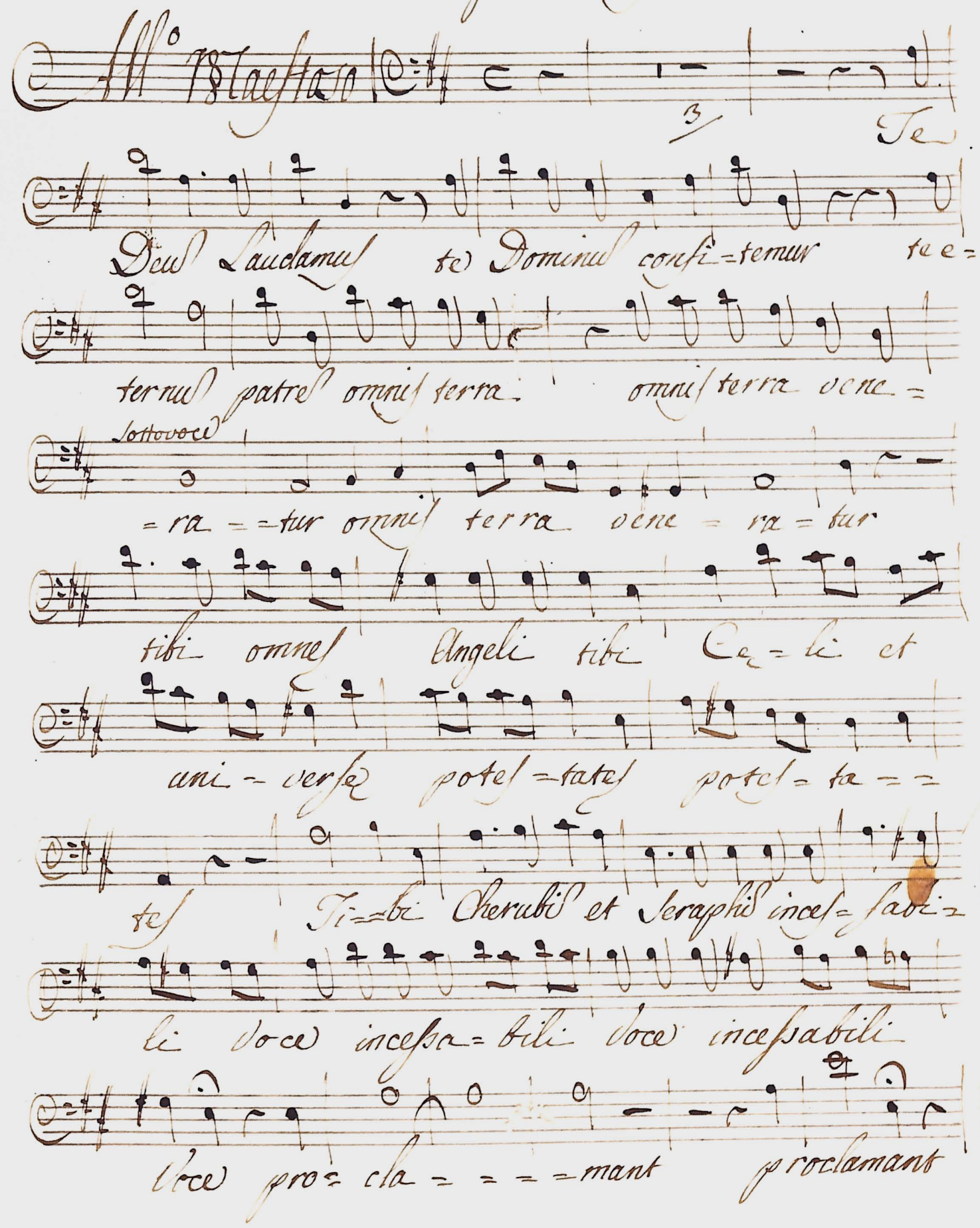


Basso rinfro

Del Sig: Pellesori

All^o *Blaetaro* 

Deus Laudamus te Dominus confitemur tui =
 ternus patre omnis terra: omnis terra vene =
 = ra = = tur omnis terra vene = ra = tur
 tibi omnes Angeli tibi Cae = li et
 uni = verse potes = tates potes = ta = =
 tes Ti = bi Cherubi et Seraphi inces = savi =
 li voce inces = bili voce incessabili
 voce pro = cla = = = = mant proclamant



pmo Sanc = tus Sanctus Sanctus Dominus Deus
 Sabaoth pleni sunt Caeli. Caeli et terra
 Majes = tatis glo = rie gloriae gloriae
 tu = = = e Majesta = = tis glo = = = rie
 tu = = = e ^{ottavo} te per orbem ter =
 rarum San = = cta confi = = tetur ecclesia confi =
 tetur ecclesia 3 pmo Patres in =
 mense im = mense Majes = tatis im =
 = mense im = mense Majes = tatis 12/12
 tu ad libe = randum susce = pturus hominem non

horruisti non horruisti virginis uterum = gineij uterum = res = iudex
 crederis crederis ebo ven-turum iudex
 crede = ris e = bo ven = = tu = = rus
 rus crederis ebo den = tu = = rus 4

Tergo quiescimus Tacet

Allegro
 Eterna fac cum Sanctis
 tu = is in gloria nume = ra = ris
 Tutti

per singu-los dies be- = ne- =
 di- = cimus te et lau- = damus nomen
 tuum in seculum et in se- = = culum
 seculi di- = gna- = re Domine dies
 isto vi- = = ne pec- ca- = to nos custo- = =
 di- = = re *Largo* in te
 Do- = = mi- = ne spe- = = ravi in te
 Do- = = mi- = ne spe- = = ravi Domi- = =
 = ne spe- = = ravi in te Domine
 Domine spe- = ravi

And con Moto

non con-fundar in e-
 ternus no no no con-fundar in e- ternus no no
 no no confundar no no no con-
 fundar no no no confundar in eternus no
 no no confundar non in eternus no no no confundar
 in e-ternus no no no con-fundar in e-
 ternus no no confundar no con-fundar in e-
 ternus no confundar in e-ternus noncon-fundar no
 no in e-ternus no con-fundar no no no no no con-
 fundar in e-ternus no no con-fundar in e-



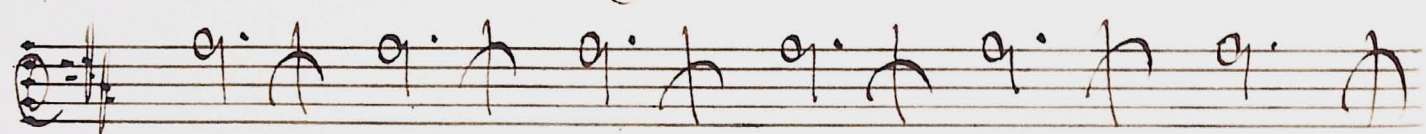
ternus no con-fundar in e-ternus non con-



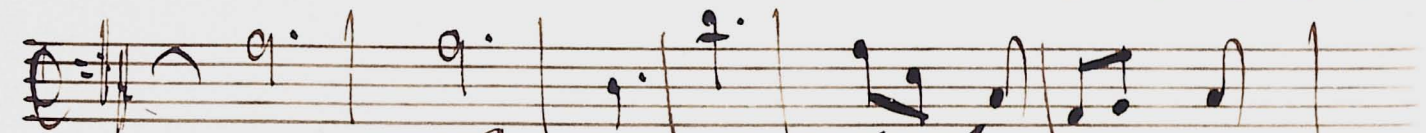
fundar in e-ternus no con-fundar in e-



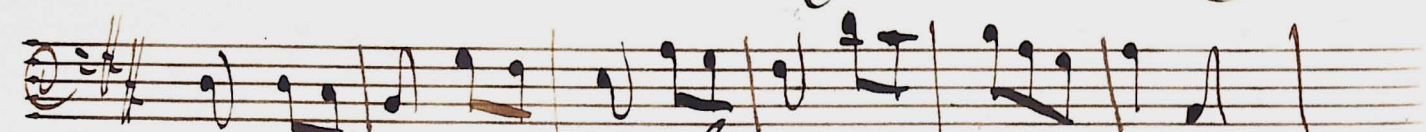
ternus non con-fundar in e-ternus in e-



ter = = = = =



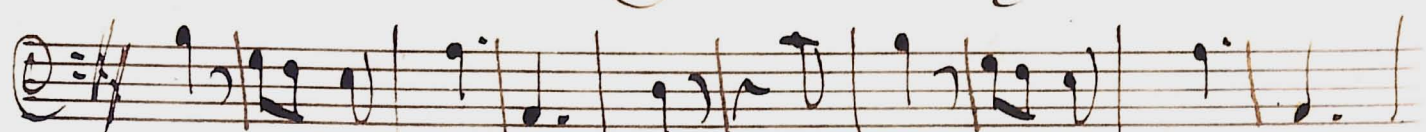
= = nus no con-fundar in e- = =



ternus no con-fundar in e-ter = = = = =



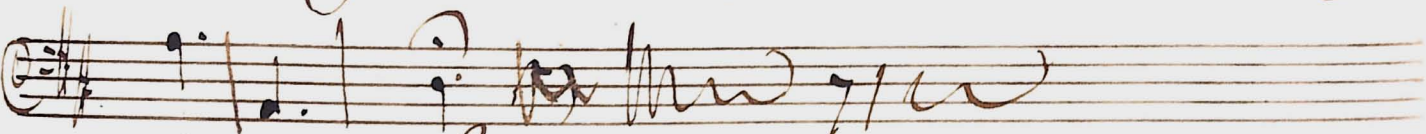
nus in eternus no confundar in eter = = nus no



no in e-ter = = nus no no in e-ter = = = =



nus no confundar in e- = = = ter = = nus in e-



ter = = nus

Finit