

BOURRÉE in D MAJOR

(from: *Ouverture - Suite in D Major, TWV 55:D11*)

Score (01':01'')

for Strings & Bass Continuo

Georg Philipp Telemann (1685 - 1757)

Ed. Michel Rondeau

(Urtext) Bourrée ♩ = 100

Musical score for Violin I, Violin II, Viola, and Double Bass, measures 1-4. The score is in D major (two sharps) and common time (C). The tempo is marked as Bourrée with a quarter note equal to 100 (♩ = 100). The Violin I part starts with a quarter note D4, followed by quarter notes E4, F#4, G4, A4, B4, C5, D5, E5, F#5, G5, A5, B5, C6, D6. The Violin II part starts with a quarter rest, followed by quarter notes D4, E4, F#4, G4, A4, B4, C5, D5, E5, F#5, G5, A5, B5, C6, D6. The Viola part starts with a quarter rest, followed by quarter notes D4, E4, F#4, G4, A4, B4, C5, D5, E5, F#5, G5, A5, B5, C6, D6. The Double Bass part starts with a quarter rest, followed by quarter notes D3, E3, F#3, G3, A3, B3, C4, D4, E4, F#4, G4, A4, B4, C5, D5.

Musical score for Violin I, Violin II, Viola, and Double Bass, measures 5-8. The score is in D major (two sharps) and common time (C). The Violin I part starts with a quarter note D5, followed by quarter notes E5, F#5, G5, A5, B5, C6, D6, E6, F#6, G6, A6, B6, C7, D7. The Violin II part starts with a quarter rest, followed by quarter notes D5, E5, F#5, G5, A5, B5, C6, D6, E6, F#6, G6, A6, B6, C7, D7. The Viola part starts with a quarter rest, followed by quarter notes D5, E5, F#5, G5, A5, B5, C6, D6, E6, F#6, G6, A6, B6, C7, D7. The Double Bass part starts with a quarter rest, followed by quarter notes D5, E5, F#5, G5, A5, B5, C6, D6, E6, F#6, G6, A6, B6, C7, D7.

BOURRÉE in D MAJOR - TWV 55:D11 - Telemann - Score

Vln. I

Vln. II

Vla.

D.B.

13

Vln. I

Vln. II

Vla.

D.B.

19

Vln. I

Vln. II

Vla.

D.B.

2x

BOURRÉE in D MAJOR

(from: *Ouverture - Suite in D Major, TWV 55:D11*)

for Strings & Bass Continuo

Violin I

Georg Philipp Telemann (1685 - 1757)

Ed. Michel Rondeau

Bourrée ♩ = 100

6

11

17

21

BOURRÉE in D MAJOR

(from: *Ouverture - Suite in D Major, TWV 55:D11*)

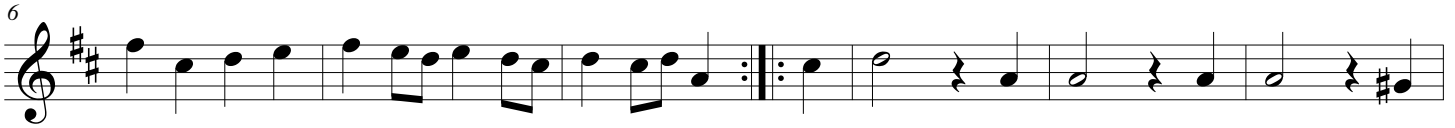
for Strings & Bass Continuo

Violin II

Georg Philipp Telemann (1685 - 1757)

Ed. Michel Rondeau

Bourrée ♩ = 100



BOURRÉE in D MAJOR

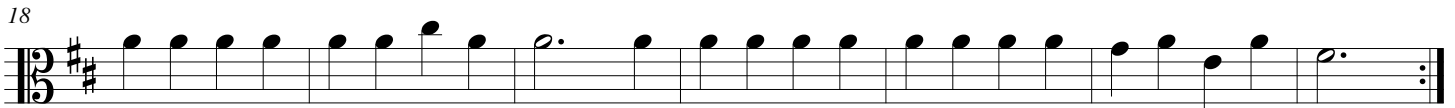
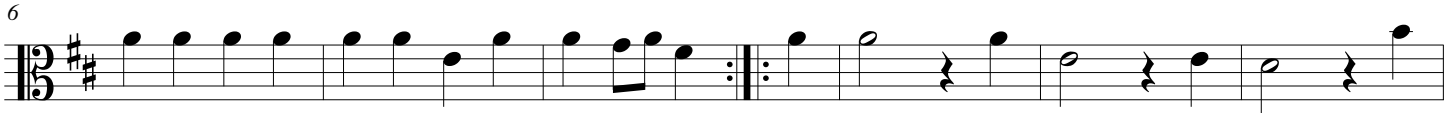
(from: *Ouverture - Suite in D Major, TWV 55:D11*)
for Strings & Bass Continuo

Viola

Georg Philipp Telemann (1685 - 1757)

Ed. Michel Rondeau

Bourrée ♩ = 100



BOURRÉE in D MAJOR

(from: *Ouverture - Suite in D Major, TWV 55:D11*)

for Strings & Bass Continuo

Double Bass

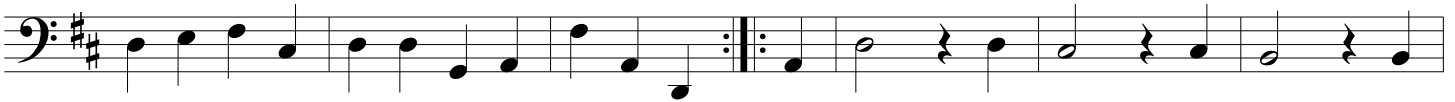
Georg Philipp Telemann (1685 - 1757)

Ed. Michel Rondeau

Bourrée ♩ = 100



6



12



18

