

Sinfonia da "Il Re Pastore"

Viola

Friedrich der Große (1712-1786)

[1.] Allegro

The image displays a musical score for the Viola part of the first movement of the Sinfonia from "Il Re Pastore" by Friedrich the Great. The score is written in bass clef with a key signature of one sharp (F#) and a common time signature (C). The tempo is marked as "Allegro". The score consists of 51 measures, organized into systems of five staves each. Measure numbers 5, 9, 13, 17, 21, 24, 27, 31, 36, 40, 44, 47, and 51 are indicated at the beginning of their respective staves. The music features a variety of rhythmic patterns, including eighth and sixteenth notes, and rests. Dynamic markings include *f* (forte) at measures 21 and 44, and *p* (piano) at measure 36. The score concludes with a final cadence in measure 51.

55

59

63

67

71

75

79

83

87

92

97

101

105

108

112

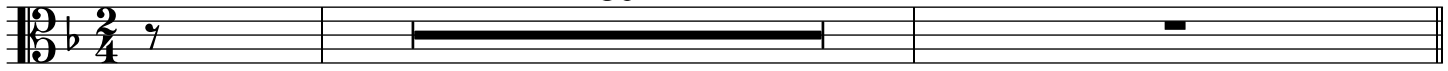
p

f

p

[2.] Andante

30



Adagio

28



[3.] Scherzando Allegro



10



19



29



38



49



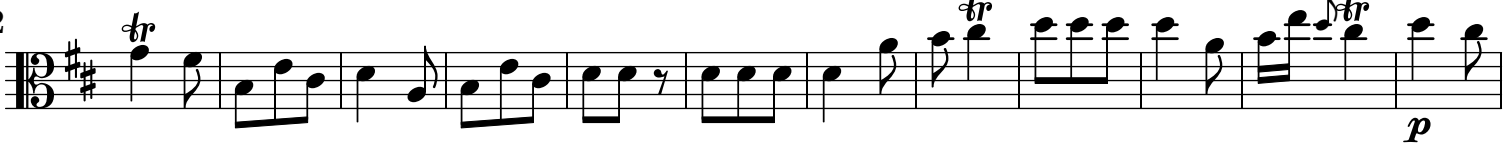
60



71



82



94

