

Double Bass

# String Sextet No. 1 in D

For two violins, two violas, one cello,  
and one double bass.

by Robert Bridson

# 1. Molto Vivace

Molto Vivace ♩ = 140

1 **6**  
mf

12  
p

17 **A**  
pizz.  
mp mf

23  
p **2**

30 arco  
mp p

36 **B**  
pizz.  
f p

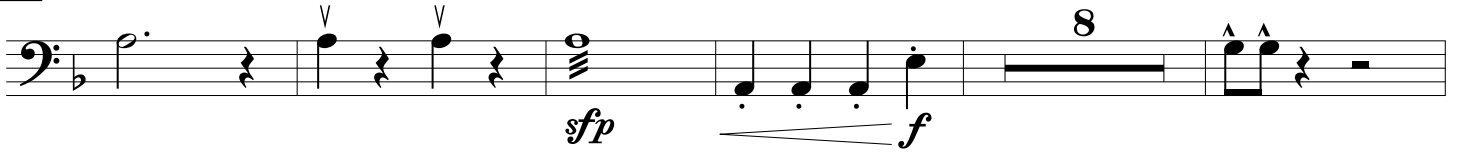
42

48 **C**  
8 9 arco  
mp p

70



**D**

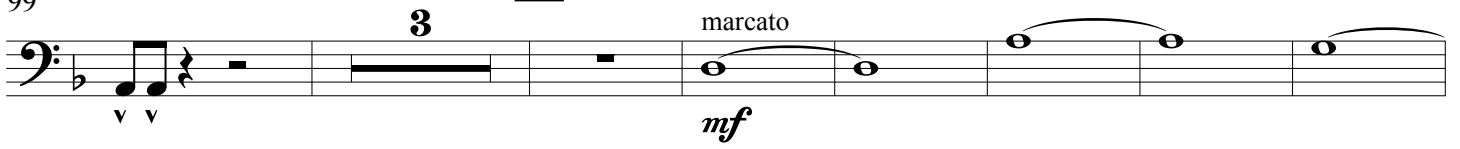


93



99

**E**



109



117

**F**



123

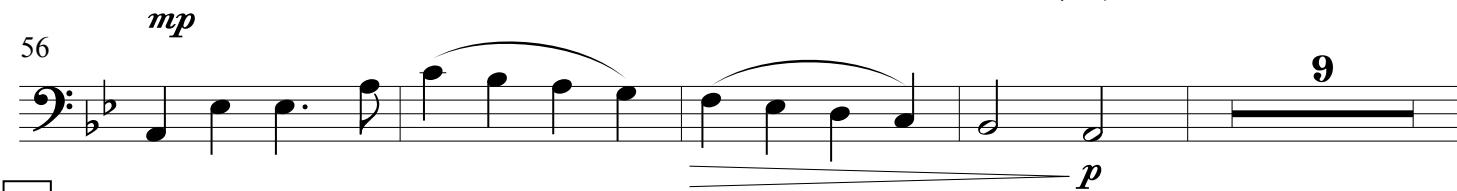
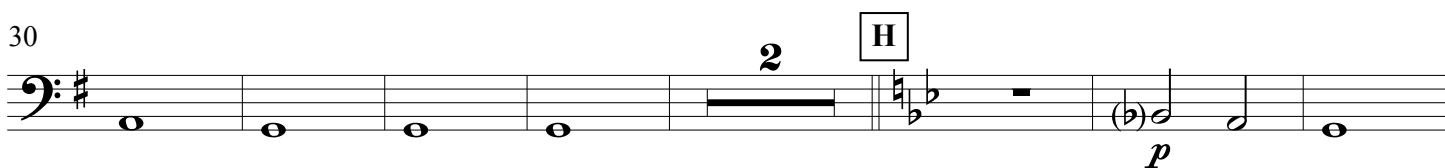
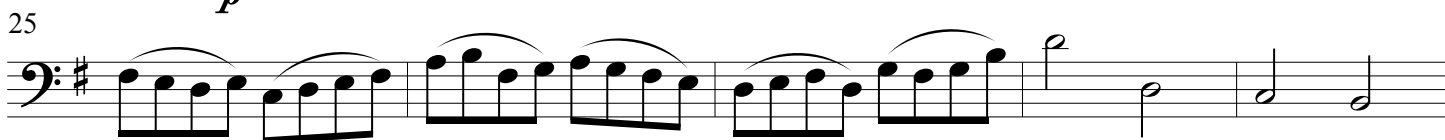
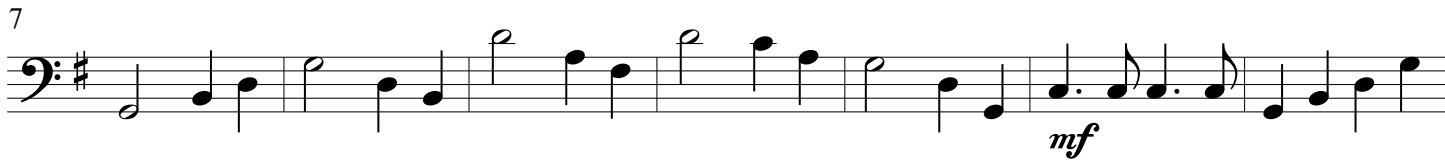


128



## 2. Andante

1 Andante  $\text{♩} = 80$   
pizz.



### 3. Allegro

214 Allegro ♩ = 110

214 **2** pizz. *pp*

223 **6** **K**

237 **6** arco *espress.* *mf* *mf*

251 **L** *p*

261 *cresc. poco a poco*

267 *f*

274 **7** pizz. *p* *mp*

289 **M** arco *mf* *mp*

298 *mf* **2**

310

*f*

319

**6**

*p*

333

**N**

*subito f*

339

345

351

357

363

369

375

*subito f*

# 4. Adagietto

Adagietto ♩ = 70

1

4  
n *pp* *p* *mp*

11

0  
*mf* *p* *p*

18

*mp* *mf*

23

*f* *mf*

28

P  
*p* *p* pizz.

34

40

Q  
*mp*

47

10  
*p* *mp*

62

R  
*f* 8

S

pizz.  
*f*

Musical staff in bass clef with a key signature of one flat. The staff contains six measures of music. The first measure has a pizzicato marking and a dynamic of *f*. The notes are: G2 (quarter), A2 (quarter), B2 (quarter), C3 (quarter), D3 (quarter), E3 (quarter). The second measure has a dynamic of *f* and notes: F3 (quarter), G3 (quarter), A3 (quarter), B3 (quarter), C4 (quarter), D4 (quarter). The third measure has a dynamic of *f* and notes: E4 (quarter), F4 (quarter), G4 (quarter), A4 (quarter), B4 (quarter), C5 (quarter). The fourth measure has a dynamic of *f* and notes: D5 (quarter), E5 (quarter), F5 (quarter), G5 (quarter), A5 (quarter), B5 (quarter). The fifth measure has a dynamic of *f* and notes: C6 (quarter), B5 (quarter), A5 (quarter), G5 (quarter), F5 (quarter), E5 (quarter). The sixth measure has a dynamic of *f* and notes: D5 (quarter), C5 (quarter), B4 (quarter), A4 (quarter), G4 (quarter), F4 (quarter).

81

Musical staff in bass clef with a key signature of one flat. The staff contains seven measures of music. The first measure has notes: G2 (quarter), A2 (quarter), B2 (quarter), C3 (quarter), D3 (quarter), E3 (quarter). The second measure has notes: F3 (quarter), G3 (quarter), A3 (quarter), B3 (quarter), C4 (quarter), D4 (quarter). The third measure has notes: E4 (quarter), F4 (quarter), G4 (quarter), A4 (quarter), B4 (quarter), C5 (quarter). The fourth measure has notes: D5 (quarter), E5 (quarter), F5 (quarter), G5 (quarter), A5 (quarter), B5 (quarter). The fifth measure has notes: C6 (quarter), B5 (quarter), A5 (quarter), G5 (quarter), F5 (quarter), E5 (quarter). The sixth measure has notes: D5 (quarter), C5 (quarter), B4 (quarter), A4 (quarter), G4 (quarter), F4 (quarter). The seventh measure has notes: E4 (quarter), D4 (quarter), C4 (quarter), B3 (quarter), A3 (quarter), G3 (quarter).

88

T

*pp*

Musical staff in bass clef with a key signature of one flat. The staff contains six measures of music. The first measure has notes: G2 (quarter), A2 (quarter), B2 (quarter), C3 (quarter), D3 (quarter), E3 (quarter). The second measure has notes: F3 (quarter), G3 (quarter), A3 (quarter), B3 (quarter), C4 (quarter), D4 (quarter). The third measure has notes: E4 (quarter), F4 (quarter), G4 (quarter), A4 (quarter), B4 (quarter), C5 (quarter). The fourth measure has notes: D5 (quarter), E5 (quarter), F5 (quarter), G5 (quarter), A5 (quarter), B5 (quarter). The fifth measure has notes: C6 (quarter), B5 (quarter), A5 (quarter), G5 (quarter), F5 (quarter), E5 (quarter). The sixth measure has notes: D5 (quarter), C5 (quarter), B4 (quarter), A4 (quarter), G4 (quarter), F4 (quarter).

94

arco

*n* *pp* *p* *mf*

Musical staff in bass clef with a key signature of one flat. The staff contains seven measures of music. The first measure has notes: G2 (quarter), A2 (quarter), B2 (quarter), C3 (quarter), D3 (quarter), E3 (quarter). The second measure has notes: F3 (quarter), G3 (quarter), A3 (quarter), B3 (quarter), C4 (quarter), D4 (quarter). The third measure has notes: E4 (quarter), F4 (quarter), G4 (quarter), A4 (quarter), B4 (quarter), C5 (quarter). The fourth measure has notes: D5 (quarter), E5 (quarter), F5 (quarter), G5 (quarter), A5 (quarter), B5 (quarter). The fifth measure has notes: C6 (quarter), B5 (quarter), A5 (quarter), G5 (quarter), F5 (quarter), E5 (quarter). The sixth measure has notes: D5 (quarter), C5 (quarter), B4 (quarter), A4 (quarter), G4 (quarter), F4 (quarter). The seventh measure has notes: E4 (quarter), D4 (quarter), C4 (quarter), B3 (quarter), A3 (quarter), G3 (quarter).

101

*f* *p*

Musical staff in bass clef with a key signature of one flat. The staff contains five measures of music. The first measure has notes: G2 (quarter), A2 (quarter), B2 (quarter), C3 (quarter), D3 (quarter), E3 (quarter). The second measure has notes: F3 (quarter), G3 (quarter), A3 (quarter), B3 (quarter), C4 (quarter), D4 (quarter). The third measure has notes: E4 (quarter), F4 (quarter), G4 (quarter), A4 (quarter), B4 (quarter), C5 (quarter). The fourth measure has notes: D5 (quarter), E5 (quarter), F5 (quarter), G5 (quarter), A5 (quarter), B5 (quarter). The fifth measure has notes: C6 (quarter), B5 (quarter), A5 (quarter), G5 (quarter), F5 (quarter), E5 (quarter).