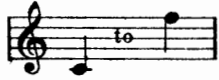


STAINER & BELL'S  
MODERN SONGS.

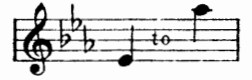
N<sup>o</sup> 54.

DEDICATED TO  
GERVASE ELWES.

N<sup>o</sup> 1 in C.



N<sup>o</sup> 2 in E<sup>b</sup>.



SONNET

XVIII

Words by

SHAKESPEARE

Music by

W. A. AIKIN.

COPYRIGHT.

PRICE 2/- NET CASH.

LONDON  
STAINER & BELL, LTD.  
58. Berners Street, W.

MADE IN ENGLAND

Sole Agents

GALAXY MUSIC CORPORATION, 17 West 46th St., New York 18, N. Y.

## Sonnet XVIII.

Shall I compare thee to a summer's day?  
Thou art more lovely and more temperate;  
Rough winds do shake the darling buds of May,  
And summer's lease hath all too short a date:

Sometime too hot the eye of heaven shines  
And often is his gold complexion dimmed;  
And ev'ry fair from fair sometime declines,  
By chance or nature's changing course untrimmed:

But thy eternal summer shall not fade,  
Nor lose possession of that fair thou ow'st;  
Nor shall death brag thou wander'st in his shade,  
When in eternal lines to time thou grow'st.

So long as men shall breathe, or eyes can see,  
So long lives this, and this gives life to thee.

SHAKESPEARE.

## SONNET XVIII.

Words by  
SHAKESPEARE

Music by  
W. A. AIKIN.

Andante moderato.

*mf* sempre legato

VOICE.

Shall I com - pare thee to a sum - mer's day?

PIANO.

*mf*

*dim.*

Thou art more love - ly and more tem-per-ate:

*dim.*

*p*

Rough winds do shake — the — dar - ling buds of May,

*p*

And summer's lease — has all too short a date:

*mf*  
Some - time too hot — the eye of hea - ven shines, And

*dim.*  
of - ten is his gold complex - ion dimm'd;

*mf* *dim.*  
And ev' - ry fair — from fair sometime de - clines, By

chance — or na-ture's chang - ing course un -

-trimm'd

*cresc.*

But thy e - ter-nal sum - mer shall not fade, Nor

lose pos - sess - ion of that fair thou ow'st, —

*f* Nor shall death brag thou wan - derst in his shade *dim.*

When in e - ter - nal lines to times thou grow'st. *rall.* *a tempo p*

So long as *allug.* *f-*

men shall breathe, or eyes can see,

*f* So long lives this

*ff* and this gives life to thee. *a piacere*

*ff* *colla voce* *tempo*

*Led.* *Led.* *Led.*

*Led.* *Led.* *Led.* *Led.*

*nul.* *ff*

*Led.* *Led.*



# SONG THEMATIC

## BIST DU BEI MIR. IF THOU ART NEAR.

Price 2/-

English Version by  
MARGERY SUTRO.

ARIA  
J. S. BACH.

Edited by  
LUDWIG LEBELL.

Andante.

VOICE: *mp*  
Bist du bei mir geh ich mit Freu - den  
If thou art near, I will with glad - ness

PIANO: *mp molto legato cantabile*

zum Ster - ben und zu mei - ner Ruh' zum Ster - ben und zu mei - ner  
Pro - ceed to Death and to my rest, un - to Death and to my -

Ruh' Bist du bei - mir geh ich mit Freu - den  
rest: If thou art' near, I will with glad - ness

Copyright, 1925, by Stainer & Bell Ltd.

S. & B. 8277.

## THE SILVER SWAN

Price 1/-

by  
ORLANDO GIBBONS

Adapted by  
EDMUND H. FELLOWES  
As a song for Solo Voice  
from the original five-part setting

Smoothly, and rather slow

VOICE: *p*  
The sil - ver Swan, who, liv - ing, had no

PIANO: *p*

note, When death ap - proached un - locked her si - lent

*poco cresc.*

throat; Lean - ing her breast a -

*p*

Copyright, 1931, by Stainer & Bell Ltd.

S. & B. 4249

## THREE SONGS

Price 2/-

### I WHERE DID GABRIEL GET A LILY?

G. JAMES

J. MAYNARD GROVER

Andante moderato

VOICE: *mf*  
Where did Ga - briel get a li - ly,

PIANO: *mf*

In the month of March, When the green is hard - ly seen

On the ear - ly larch? Though I know just where they grow, I have pulled no daf - fo - dil - ly.

Copyright, 1925, by Stainer & Bell Ltd.

S. & B. 8220.

## DUSK O' DREAMS

Price 2/-

(A ROMANY LULLABY)

Words by  
LOUISE McDERMAID

Music by  
RAYMOND LOUGHBOROUGH

Lento

VOICE: *p* (In a crooning manner)  
In the deep moss - y

PIANO: *pp* (Like a cradle rocking)

grass - Lay - down your head, Fair - ies will

*cresc.*

whis - per a - round your green bed; While the

Copyright, 1926, by Stainer & Bell Ltd.

S. & B. 8238.