

Concerto in G Major, Op. 10, No. 6 alt., (RV 101)

for Flute, Oboe, Violin, and Bassoon

Basso continuo

[Allegro]

1

7

14

21

39

46

65

72



85

91

109

116

122

II.

[Largo]

6

12



III.

Allegro



7



14



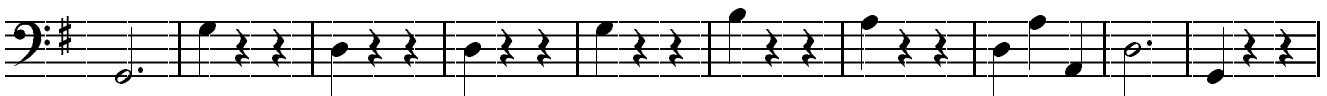
21



30



40



50



60



69



81



92



99



106

