

FLAUT Gr.

SERBANACHIFOR

LONTANO RAG-TIME

"LONTANO RAG-TIME"

FLAUT GR.

SERBA NICHIFOR

ALLEGRO, MODERATO (♩ = 84) $\frac{2}{2}$ *ff con brio*

sub. f signal.

11 *f signal*

p sostenuto

poco *sub. f signal.* *sfz*

21 *f dolce*

31 *subp sotto voce* *molto*

mf *p dolce* *Poco più mosso (♩ = 90)*

ppp lontano

41

Fl.

-2-

sub.f con brio

51

Solo
sub. a tempo (d=90)
mp molto cantabile

poco

61
sub.f con brio

ff a tempo

atempo

71
ff

Miracoloso (d=40)
81
Pianoforte

91
18va

-3- Fl.
subito molto Allegro ($\text{♩} = 144$)

sub #buffo

101

111

sub. virace ($\text{♩} = 152$)

sfz

G.P.

sempre buffo

121

sfz

animando poco a poco

ff sfz in rilievo sempre sfz animando

131

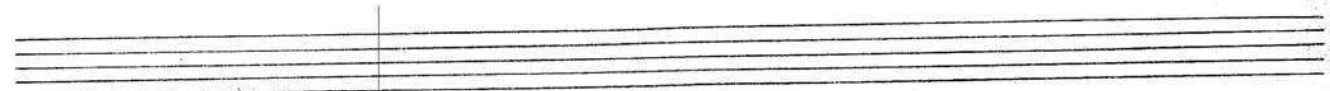
sempre animando

ff sostenuto

Molto precipitato

Fl.

Handwritten musical score for Flute, measures 141-144. The score includes dynamic markings like "molto", "fff disperato", "molto", and "secco", and tempo markings "sub. quasi senza Tempo (♩=40)" and "sub. PRESTO (♩=192) con brio". It features various musical notations such as slurs, accents, and articulation marks.



BLOCK FLÖTE

SERBAIN NICHIFOR

(ossia Flauto gr. ; ossia Oboe)

LOMTANO RAG-TIME

"LONTANO RAG-TIME"

BLOCK FLÖTE

SERBAN NICHIFOR

(ossia Flauto gr. II ; ossia Oboe)

ALLEGRO MODERATO ($\text{♩} = 84$)

ff con brio

Handwritten musical notation for Block Flute, measures 1-2. Includes dynamic marking *ff con brio* and performance instruction *sub.f signal.*

Handwritten musical notation for Block Flute, measures 3-4. Includes circled measure numbers 11 and 12, dynamic marking *sub.f signal.*, and circled performance instruction **CLS**.

Handwritten musical notation for Block Flute, measures 5-6. Includes dynamic marking *fl. gr. b^p.*

Handwritten musical notation for Block Flute, measures 7-8. Includes circled performance instruction **B.fl.**, dynamic marking *poco*, and performance instruction *sub.f signal.*

Handwritten musical notation for Block Flute, measures 9-10. Includes circled measure number 21, dynamic marking *fl. gr.*, and performance instruction *mf poco pesante*.

Handwritten musical notation for Block Flute, measures 11-12. Includes circled measure number 31, performance instruction *Poco più mosso* ($\text{♩} = 90$), and dynamic marking *ppp 'lontano'*.

Handwritten musical notation for Block Flute, measures 13-14.

Handwritten musical notation for Block Flute, measures 15-16. Includes circled measure number 41.

Handwritten musical notation for Block Flute, measures 17-18.

Handwritten musical notation for Block Flute, measures 19-20. Includes performance instruction *poco a poco*, dynamic marking *(mp)*, and performance instruction *sub.f con brio*.

B-Fl.

51 *sub. a tempo* ($\text{♩} = 90$)
FL. Gr. - - - -

61 FL. Gr. FL. BLOK
sub. f con brio

ff

71 *atempo* P.F. *atempo* FL. Gr. *ff*

sub. quasi senza Tempo *Miraculoso* ($\text{♩} = 60$) 81
Pianoforte - - - -

91 *subito ff buffo*

104

111 *s-fz* G.P.

B-Fl.

sub. vivace (d=152)

Handwritten musical notation for B-Flute, measures 118-121. The music features eighth and sixteenth notes with various articulations like accents and slurs. Measure 121 is circled.

Handwritten musical notation for B-Flute, measures 122-125. Includes the instruction "Animando poco a poco" and dynamic markings "sfz" and "ff in rilievo".

Handwritten musical notation for B-Flute, measures 126-130. Measure 131 is circled. Includes dynamic markings "sfz".

Handwritten musical notation for B-Flute, measures 131-135. Includes the instruction "Giocoso, in rilievo" and dynamic marking "ff". Measure 141 is circled.

Handwritten musical notation for B-Flute, measures 136-140. Includes the instruction "molto precipitando".

Handwritten musical notation for B-Flute, measures 141-145. Includes the instruction "sub. Quasi Tempo (d=40)" and dynamic markings "molto" and "fff disperato".

Handwritten musical notation for B-Flute, measures 146-150. Includes the instruction "sub. PRESTO (d=192)" and dynamic markings "sfz" and "fff marcato". A circled "CLS" is present.

Handwritten musical notation for B-Flute, measures 151-155. Includes the instruction "Frullato" and dynamic marking "ff signal". A circled "CLS" is present. Includes a note: "[A, Δ = sunetul cel mai acut] (CLS) = glason ad lib."

possibile

VIOLINA 1

SERBAN MICHIFOR

" LONTANO RAG-TIME "

"LONTANO RAG-TIME"

VIOLINA 1

SERBAN NICHIFOR

ALLEGRO MODERATO ($\text{♩} = 88$)

f con brio

Solo

sub. p misterioso *sempre sul sol*

(*sempre p* misterioso)

31

sempre p misterioso

mf appassionato ironico

21 *molto vibrato* (*sempre sul sol*)
poco gl. sempre

f *v dolce*

31 *molto*

Vn. 1

↓ Poco più mosso (♩ = 90)

3/2 ⁿ pizz

41

ARCO ⁿ
poco a poco (mp) subf con brio

51 sub. a tempo (♩ = 90)
Fl. gr

61 2 ^{pizz}
sub. f con brio

71

sub. Quasi Tempo 2

MIRACOLOSO (♩ = 40) 81 10 91 6

Vn. I

PERDEMBONJI

subito molto allegro (♩ = 144)

sub ff buffo

DED.

Vm. 1

(sempre animando)

Molto precipitando

Sub. Quasi Senza Tempo

Sub. Presto

VIOLINA 2

SERBAN NICHIFOR

LONMTANO RAG-TIME

„LONTANO RAG-TIME“

VIOLINA 2

SERBAN NICHIFOR

ALLEGRO MODERATO (♩=88) *f con brio*

Pizz
pp misterioso

sempre pp misterioso

11 *ARCO* *sub. f signal*

Pizz
sempre pp misterioso

ARCO *gliss* *sub. f signal.*

21 *Fl. Gr.* *mf poco pesante*

31 *Poco più mosso (♩=90)*
Pizz
pp lontano

41 *poco a poco (mp)*

ARCO Vn. 2

sub. f con brio

Fl. gr. 8

sub. a tempo $\text{♩} = 90$

sub. f con brio

a tempo

ff

a tempo

ff

sub. quasi senza Tempo Miracaloso ($\text{♩} = 40$)

81

91

Pianoforte

subito molto allegro ($\text{♩} = 144$)

sub. *ff* tutto

101

111

G. P.

sfz

Vn. 2

animando poco a poco

ff scorrevola

sempre animando

ff giocoso, in rilievo

molto precipitando

sub. quasi senza Tempo (d=40)

molto

fff disperato

sub. PRESTO (d=192)

sfz

fff marcato

(non tremolo)

secco

fff signal

possibile

sfz

(Δ = suet f. aut emis dincolo de calus, spre cordar.)