

CONCERTI DI CAMERA

A 4. 5. 6. 7. 8. 9 INSTRUMENTI.

Dedicati

ALLA SER^{ma} ALTEZZA ELETTORALE

DI

GIORGIO LUDOVICO,

DUCA DI BRONSVICH e LVNEBURGO

ELETTORE & ARCITESORIERO

DEL . S . R . I . &c . &c . &c .



DA

Francesco Venturini, Maestro dei Concerti di Camera di S.A.E.
in Hannovera .

Divisi in due Parti .

OPERA PRIMA .

Parte Prima .

a Amsterdam Chez Etienne Roger, Marchand Libraire .

N^o 164

ASSEMBLY OF THE STATE OF NEW YORK

SENATE

REPORT

OF THE

COMMISSIONERS OF THE LAND OFFICE

IN ANSWER TO A RESOLUTION PASSED

AT THE SESSION OF THE SENATE

ON THE 15TH MARCH 1866

ALBANY

WHELAN AND SON, PRINTERS

1866

NEW YORK

WHELAN AND SON, PRINTERS

1866

NEW YORK

SONATA I

OUVERTURE a 8 Instruments 2 Violons 2 Hautbois
1 Haute Contre 1 Taille 1 Basson & Basse Continue.

Grave e Stacato

Adagio

ALLEMANDA

a 8 Instruments

Tenore Viola

ARIA
à 8 Instruments
Andante

GAVOTTA
à 8 Instruments
Alternativement avec le Trio suivant.

MENUET
à 8 Instruments
Alternativement avec le Menuet suivant

SONATA II
CONCERTO à 10 Instruments 2 Violons, 2 Hautbois 2 Flûtes
1 Haute Contre, 1 Taille 1 Basson, Basse & Basse Continue.
Alle gro Assai *Piano* *Piano*

Tenore Viola

Piano *Forte* *Forte* *Piano* *Forte* *Piano* *Forte* *Forte* *Fine*

2 3 7 6

Adagio *Pianissimo*

Da Capo del Concerto

CANON
à 8 Instruments

Andante

1 1

PASSEPIED
à 8 Instruments

Alternativement avec le Trio suivant

Piano *Forte* *Fine* *Trio Tacet*

24

Da Capo del Passepiéd

SONATA III

OVERTURE a 8 Instruments 2 Violons 2 Hautbois 1 Haute
Contre 1 Taille 1 Basson & Basse Continue.

Allegro e Staccato

ALLEMANDA

a 8 Instruments.

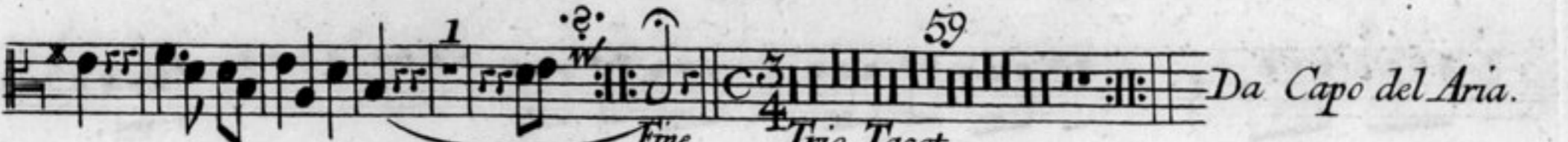
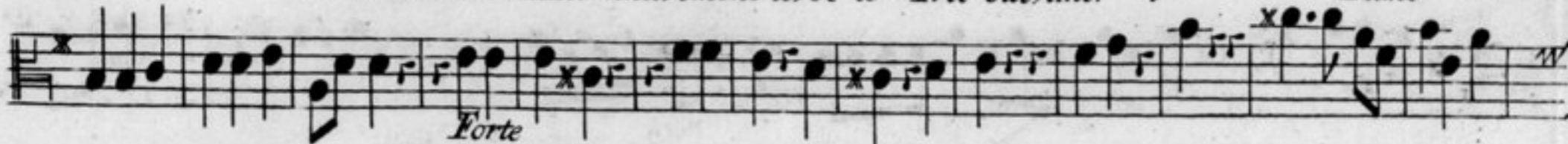
Pas trop vite



ARIA
a 8 Instruments.



Andante & Alternativement avec le Trio suivant.

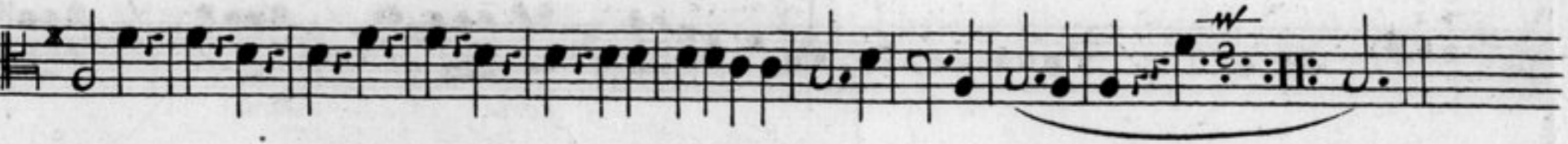
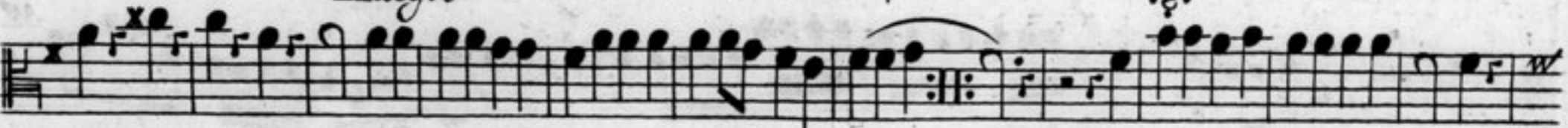


Da Capo del Aria.

BOURÉE
a 8 Instruments.



Allegro



PASSEPIED
a 8 Instruments



Allegro assai & Alternativement avec le Trio suivant.



Da Capo del Passepied

SONATA IV

CONCERTO a 8 Instruments 2 Violons 2 Hautbois
1 Flute Contre 1 Tulle 1 Basson & Basse Continue.

Allegro assai. Alternativamente avec la Sarabande

Piano

Forte *Piano*

Forte *Forte*

Piano *Forte*

Forte *Piano*

Forte *Piano*

Forte *Piano*

Forte *Piano Forte*

Fine Sarabanda

Da Capo del Concerto.

GIGA
a 8 Instruments

Allegro Piano

Forte Piano

Forte

Piano

Forte

Piano Forte

GAVOTTA
a 8 Instruments

Alternativement avec le Trio suivant

16
Fine Trio Tacet Da Capo del Gavotta

MENUET
a 8 Instruments

Alternativement avec le Menuet suivant

Fine Second Menuet

Da Capo del Primo Menuet

SONATA V

OVERTURE, a 8 Instruments 2 Violons 2 Hautbois
1 Haute Contre 1 Taille 1 Basson & Basse Continue.

The first movement of Sonata V is an Overture in common time. It begins with a *Grave* tempo and features a series of sixteenth-note patterns. The score includes dynamic markings such as *ff* and *ff*. A tempo change to *Allegro* occurs at measure 4, marked with a 4/4 time signature. The piece continues with complex rhythmic figures, including triplets and sixteenth-note runs. Measure numbers 5, 15, and 10 are indicated. The movement concludes with a *Grave* section and a repeat sign.

ALLEMANDA

a 8 Instruments.

The second movement, Allemanda, is in common time and features a steady eighth-note rhythm. It includes various musical ornaments and dynamic markings. The score concludes with a repeat sign and a final cadence.

Tenore Viola

ARIA

a 9 Instruments 2 Violons 2 Hautbois 1 Haute Contre 1 Taille 2 Bassons & Basse Continue.

GAVOTTA

a 8 Instruments

BOURÉE

a 8 Instruments.

Presto & Alternativement avec la Bourée suivante.

MENUET

a 8 Instruments.

Alternativement avec le Menuet suivant.

Fine 2. Menuet

Da Capo del Primo Menuet.

SONATA VI

CONCERTO a 9 Instruments 2 Violons, Violons Ripienes 2 Hautbois 1 Hautc Centre 1 Taille 1 Basson & Basse Continue.

Allegro

Piano Forte

Piano Forte Piano Forte

Piano Forte Piano Forte Piano Forte

Piano Forte

Piano Forte Piano Forte

Pianissimo Pia. Forte Adagio e Piano

Pianissimo Forte

Da Capo del Concerto.

PASSEPIED

a 8 Instruments.

Presto & Alternativement avec le Passepied suivant.

Fine 2. Passepied

Da Capo del Primo Passepied.